

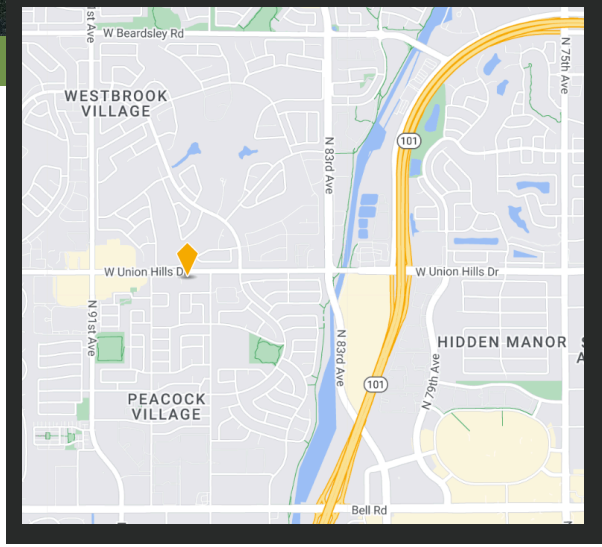
8801 W Union Hills Dr



Call For More Information

Property Snapshot

- Prime Street View
- Monument Signage*
- **3,000 SF Move In Ready**
- Easy access near the Loop 101 Freeway
- \$24.00 NNN
- \$9.00 approx. CAMS

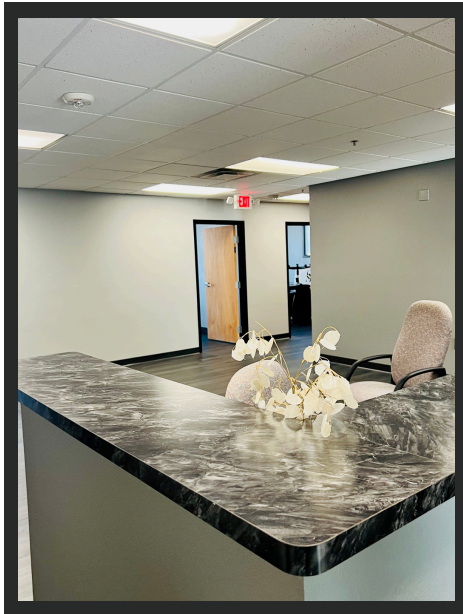
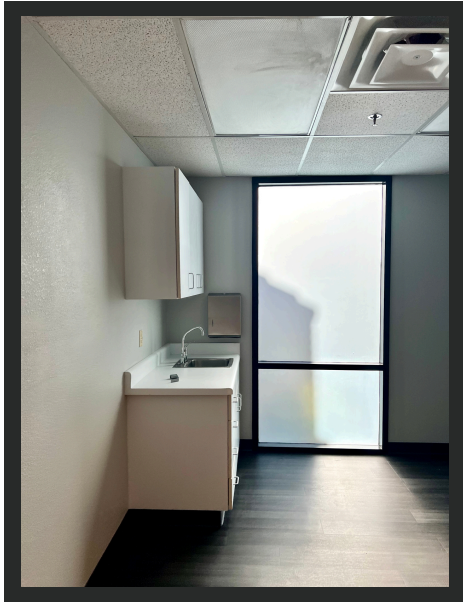


ALYSSA PITNER
602.799.8182 | apitner@REsourcecmcl.com

TRACY ALTEMUS
602.206.6474 | taltemus@REsourcecmcl.com

*Upon Approval

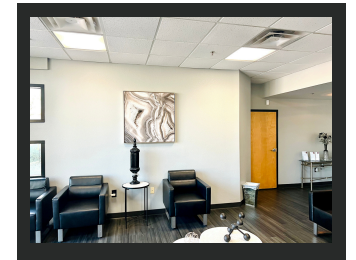
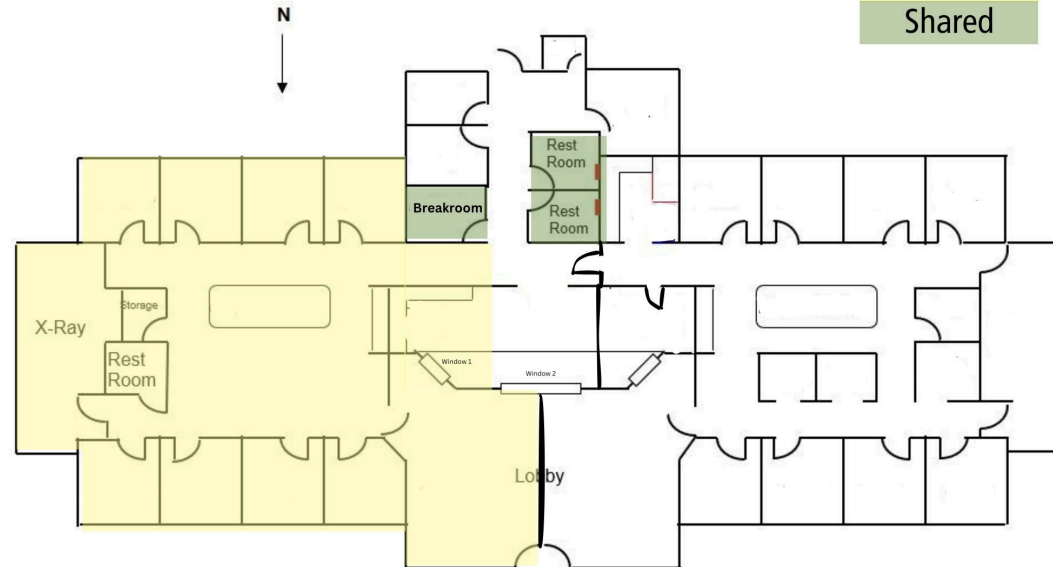
REsourcecmcl.com



Suite A

3,000 SF

Available
Shared



ALYSSA PITNER

602.799.8182 | apitner@REsourcecmcl.com

TRACY ALTEMUS

602.206.6474 | taltemus@REsourcecmcl.com