

FOR SUBLEASE

880 E LONE CACTUS DR

±10,437 SF Food-grade Cooler Production/Distribution Available

PHOENIX, AZ





*Free standing food-grade facility
with secured yard located in the
heart of Deer Valley.*

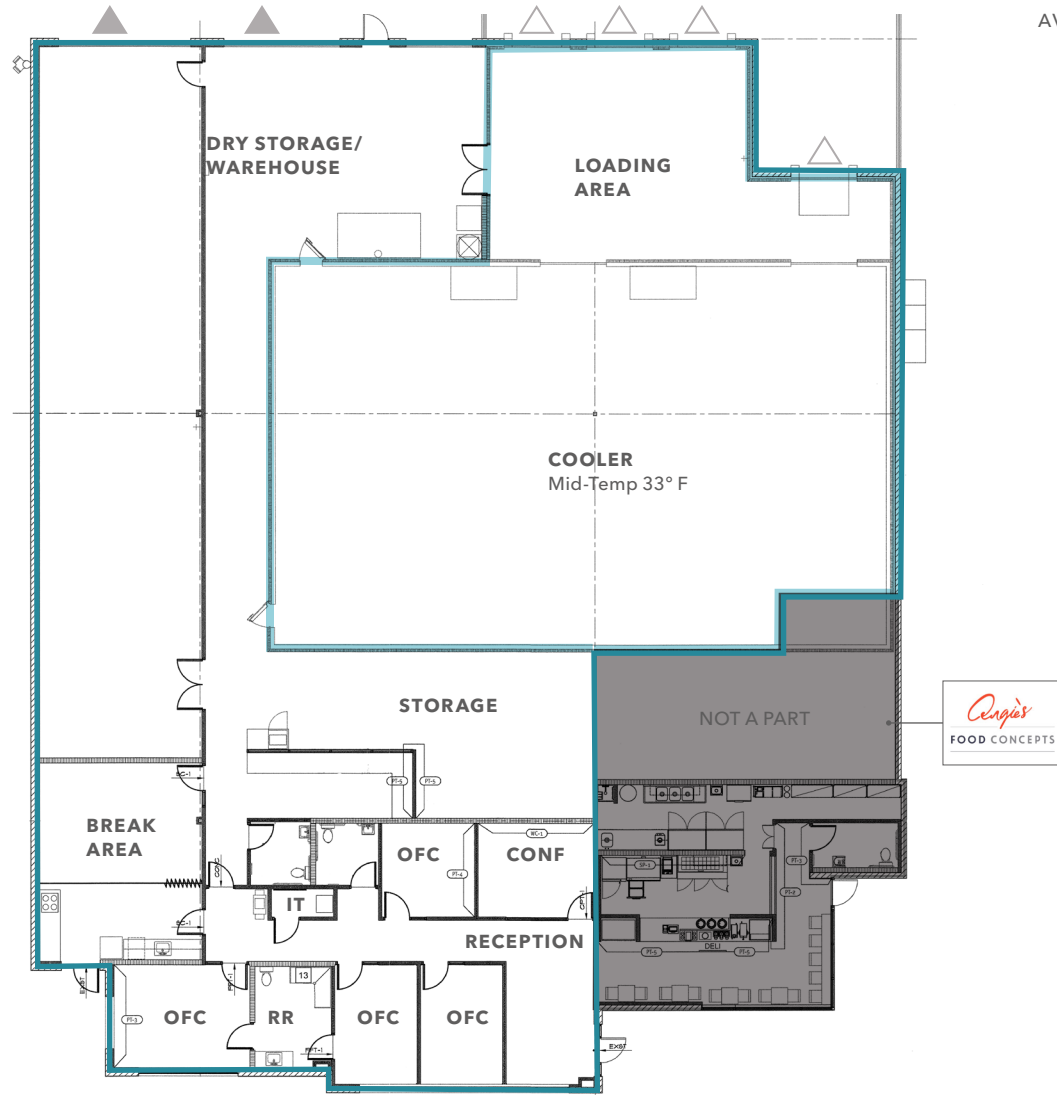
TOTAL BUILDING SIZE	±12,437 SF
AVAILABLE SF	±10,437 SF
LOT SIZE	±42,920 SF
LOADING	4 Dock-Hi Positions 2 Grade Level Doors
CLEAR HEIGHT	20'
YEAR BUILT	2015
POWER	1000 amps, 277/480v 3ph
ZONING	A-1, City of Phoenix
SECURED FENCED YARD	Motorized Gate
FOOD-GRADE IMPROVEMENTS	Floor drains 20 gallon grease trap Coolers to maintain temperature down to 33°F
CUSTOM UPGRADES THROUGHOUT	All concrete yard and parking area, motorized blinds, modern office design

+10,437
SF AVAILABLE

RATE
CONTACT BROKER

FLOOR PLAN

±10,437 SF
AVAILABLE



DEER VALLEY SUBMARKET





For more information, contact

MIKE CIOSEK, SIOR
Executive Vice President
602.513.5135
mike.ciosek@kidder.com

ERIC BELL, SIOR
Executive Vice President
602.513.5151
eric.bell@kidder.com

KIDDER.COM

This information supplied herein is from sources we deem reliable. It is provided without any representation, warranty, or guarantee, expressed or implied as to its accuracy. Prospective Buyer or Tenant should conduct an independent investigation and verification of all matters deemed to be material, including, but not limited to, statements of income and expenses. Consult your attorney, accountant, or other professional advisor. All Kidder Mathews designs are the sole property of Kidder Mathews. Branded materials and layouts are not authorized for use by any other firm or person.

