

Historic South Tampa Office Building For Lease



HISTORIC SOUTH TAMPA OFFICE

210 W PLATT STREET
TAMPA, FL 33606



**CHELSEA
DRINKARD**

Broker Associate

813-289-3700

cd@officespacebrokers.com

SUITE DETAILS:

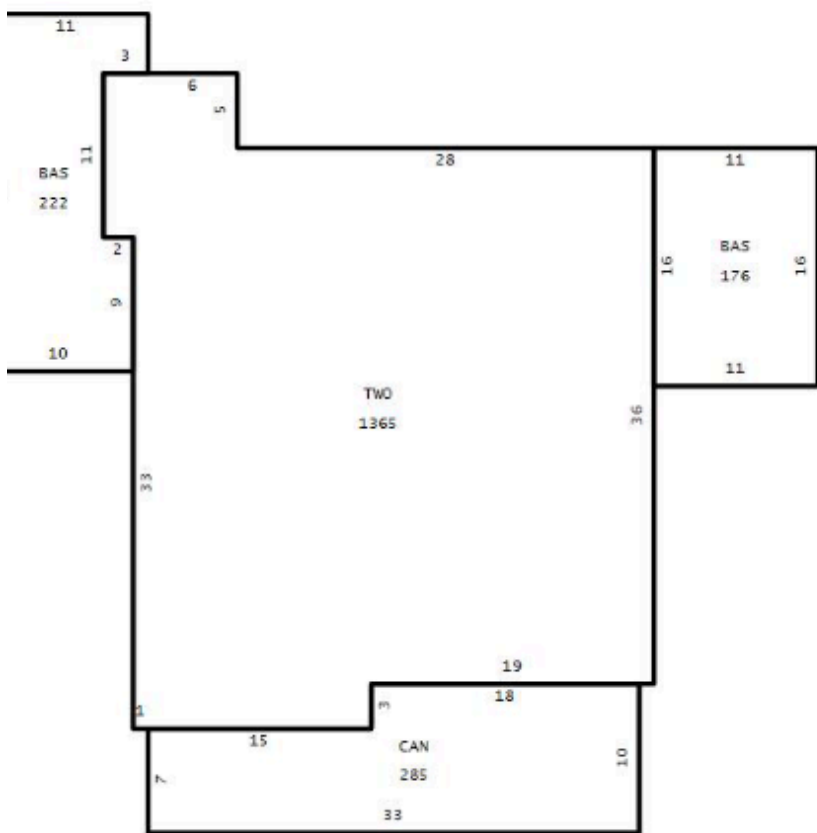
- 3,128 USF
- Available now
- Flexible Lease Terms
- Parking lot and on street parking available
- Monument signage facing W Platt Street

Historic South Tampa Office Building For Lease



FLOOR PLAN:

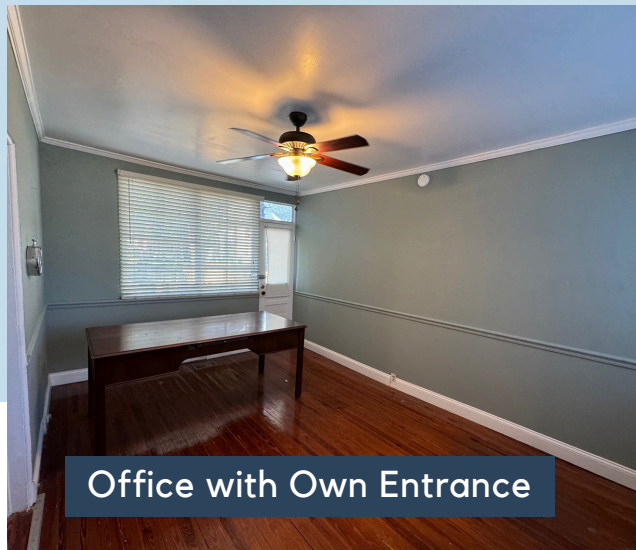
- Up to 3 offices on the first floor available
- Can be leased individually or all together
- 2 offices have own entrance
- Shared reception, conference room, bathroom and kitchenette



Shared Reception/Waiting



Shared Conference Room



Office with Own Entrance



**CHELSEA
DRINKARD**

Broker Associate

813-289-3700

cd@officespacebrokers.com