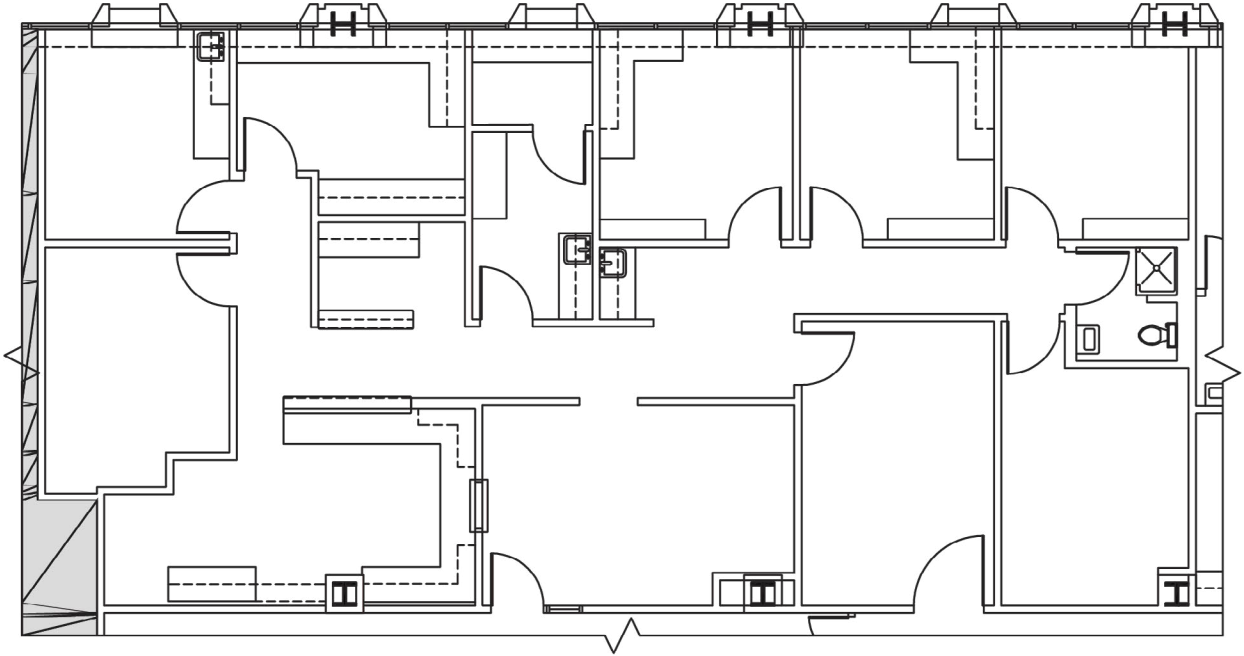


SUITE PLAN

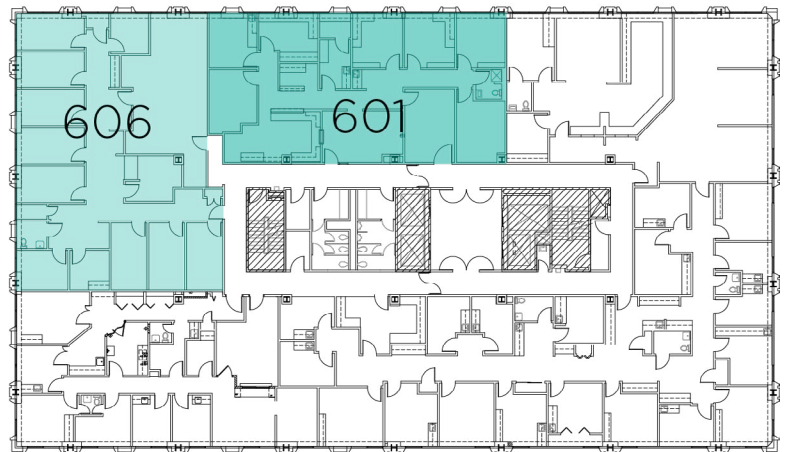
St. Mary's Medical Office Building North

5855 Bremo Road, Richmond, VA

SUITE 601*
2,484 SF



* Contiguous suites
on 6th floor can
be combined



For Leasing Information

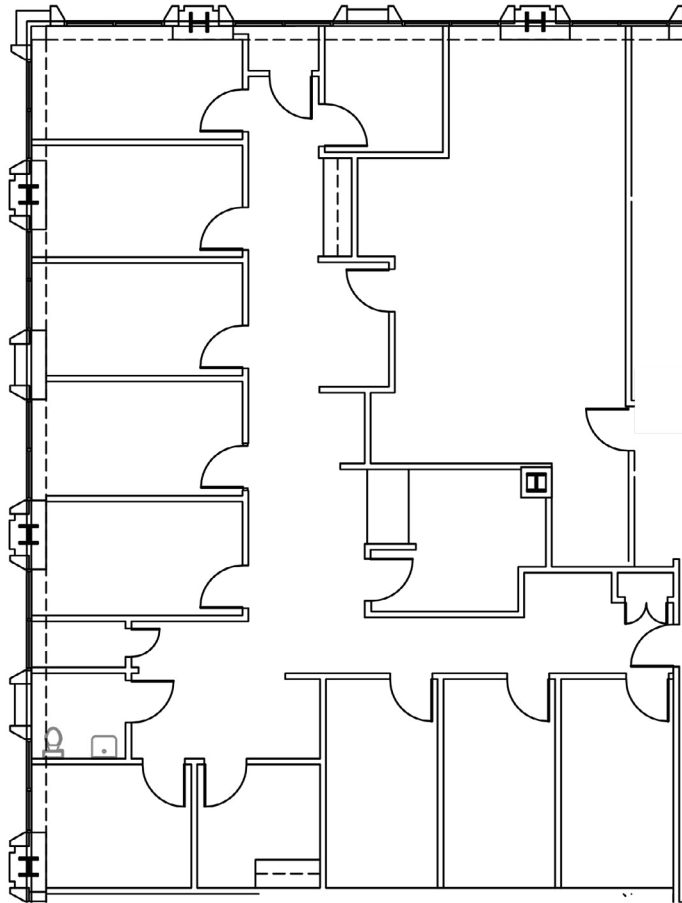
Contact Regional Leasing Director
Tyler Miller at (804) 836-4473
tyler.miller@lillibridge.com

SUITE PLAN

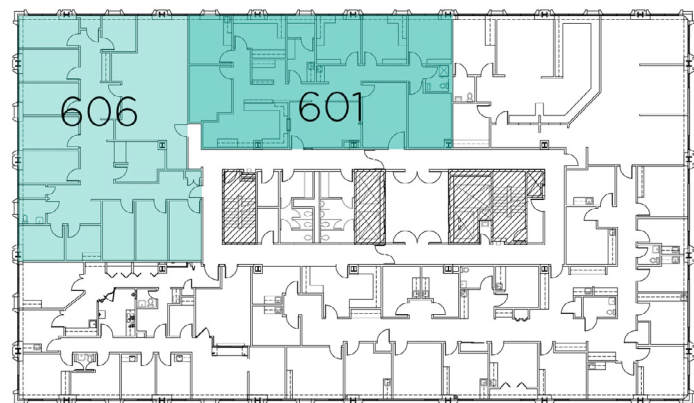
St. Mary's Medical Office Building North

5855 Bremono Road, Richmond, VA

SUITE 606*
3,136 SF



* Contiguous suites
on 6th floor can
be combined



For Leasing Information

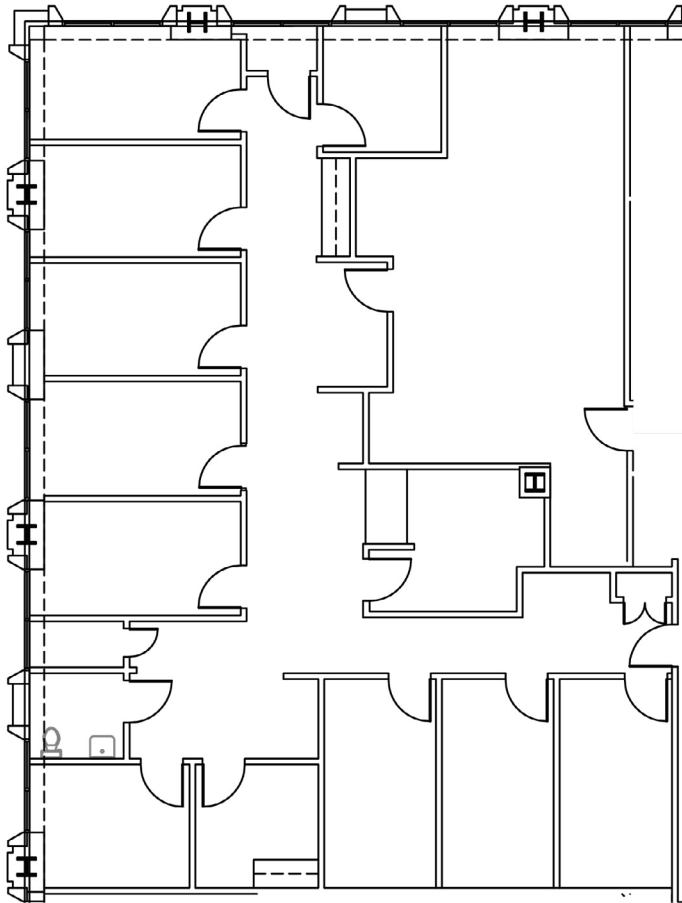
Contact Regional Leasing Director
Tyler Miller at (804) 836-4473
tyler.miller@lillibridge.com

SUITE PLAN

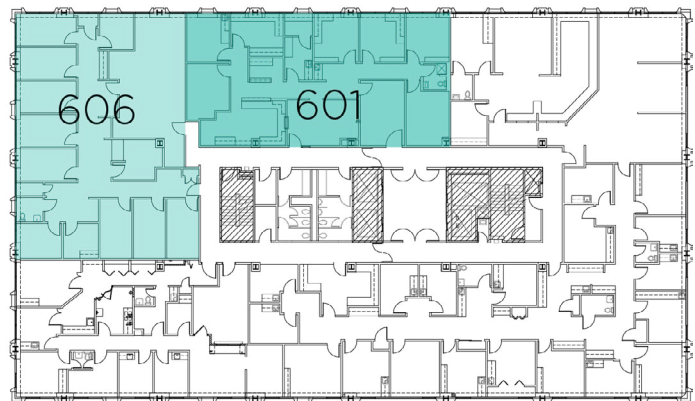
St. Mary's Medical Office Building North

5855 Bremono Road, Richmond, VA

SUITE 606*
3,136 SF



* Contiguous suites
on 6th floor can
be combined



For Leasing Information

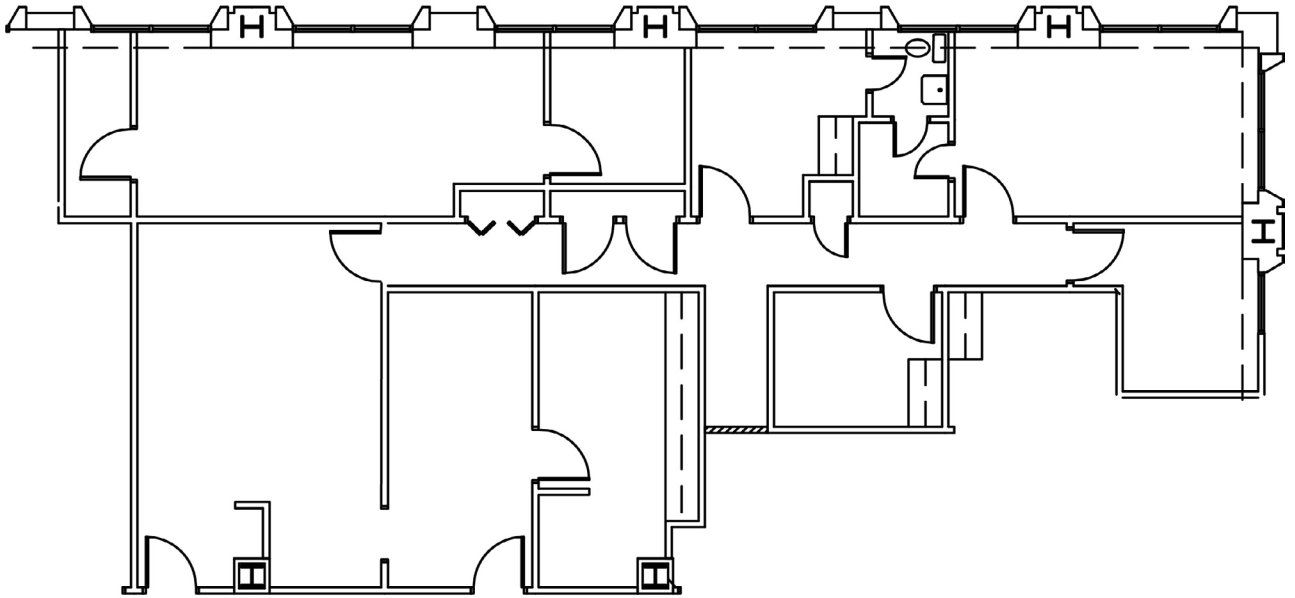
Contact Regional Leasing Director
Tyler Miller at (804) 836-4473
tyler.miller@lillibridge.com

SUITE PLAN

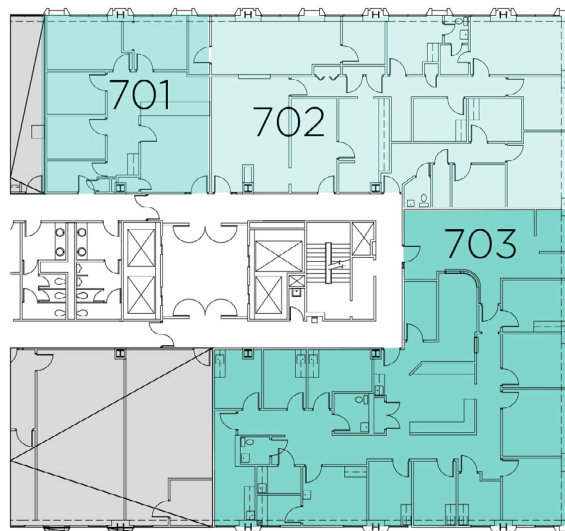
St. Mary's Medical Office Building North

5855 Bremono Road, Richmond, VA

Suite 702*
2,186 SF



* Contiguous suites
on 7th floor can
be combined



For Leasing Information

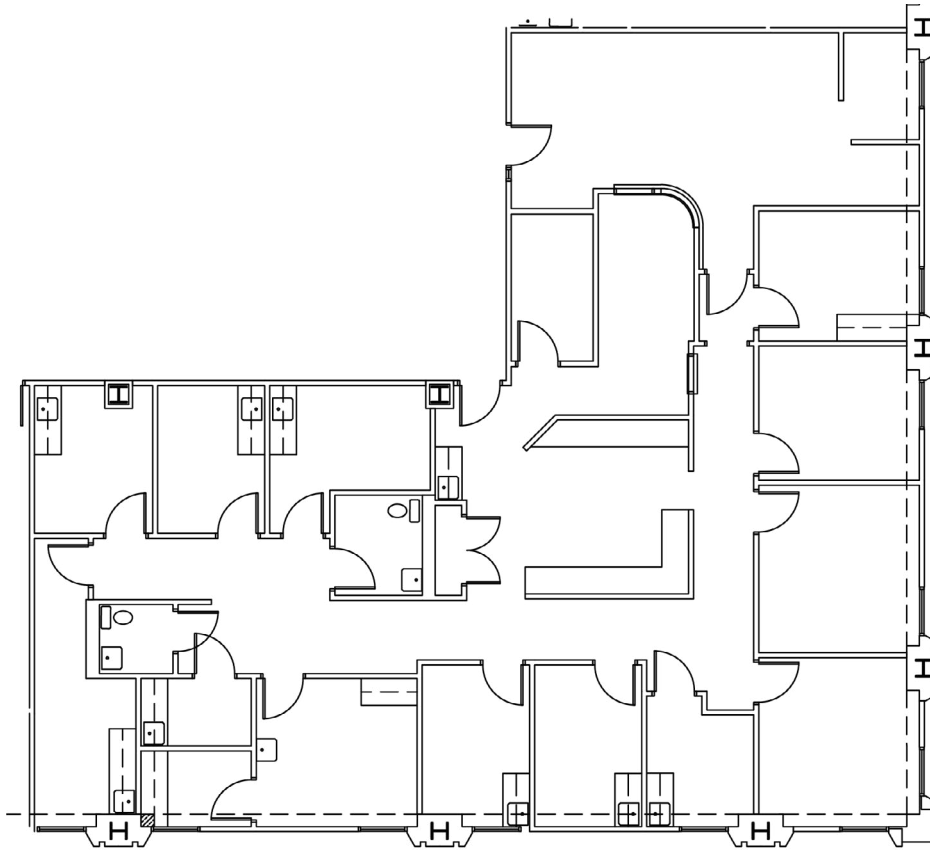
Contact Regional Leasing Director
Tyler Miller at (804) 836-4473
tyler.miller@lillibridge.com

SUITE PLAN

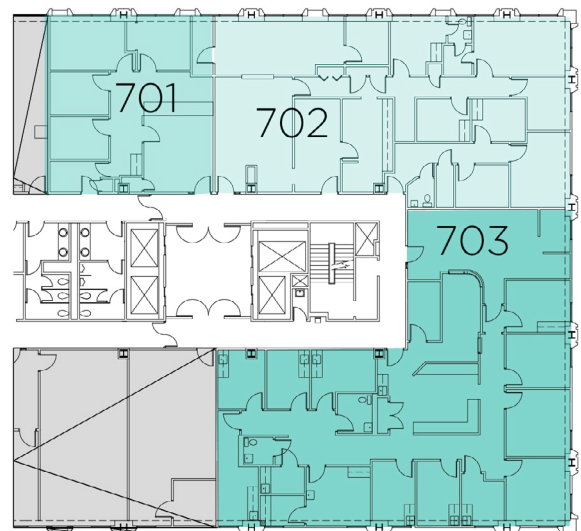
St. Mary's Medical Office Building North

5855 Bremon Road, Richmond, VA

Suite 703*
3,600 SF



* Contiguous suites
on 7th floor can
be combined



For Leasing Information

Contact Regional Leasing Director
Tyler Miller at (804) 836-4473
tyler.miller@lillibridge.com