

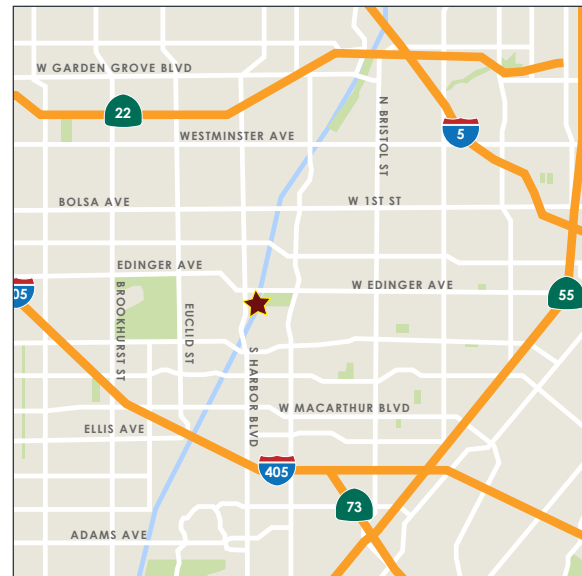
OFFICE FOR LEASE

16480 HARBOR BLVD | FOUNTAIN VALLEY, CA 92708



PROPERTY FEATURES:

- Quality Class B Multi-Tenant Office Building
- Efficient Floor Plans
- Professionally Managed
- Close Proximity to 405 and 22 Freeways
- Retail Amenities Adjacent to Office Building
- Ample Parking
- Competitive Lease Rates
- **CAM: \$0.05 / PSF (Fixed)**



FOR MORE INFORMATION, PLEASE CONTACT:

JOSH REILLY, MBA
Principal

DRE#: 01474368
T: 949.525.2720
E: jreilly@leelalb.com

Copyright © Lee & Associates. All rights reserved. No part of this work may be reproduced or distributed without written permission of the copyright owner. The information contained in this report was gathered by Lee & Associates from sources believed to be reliable. Lee & Associates, however, makes no representation concerning the accuracy or completeness of such information and expressly disclaims any responsibility for any inaccuracy contained herein. 5.1.23

OFFICE FOR LEASE

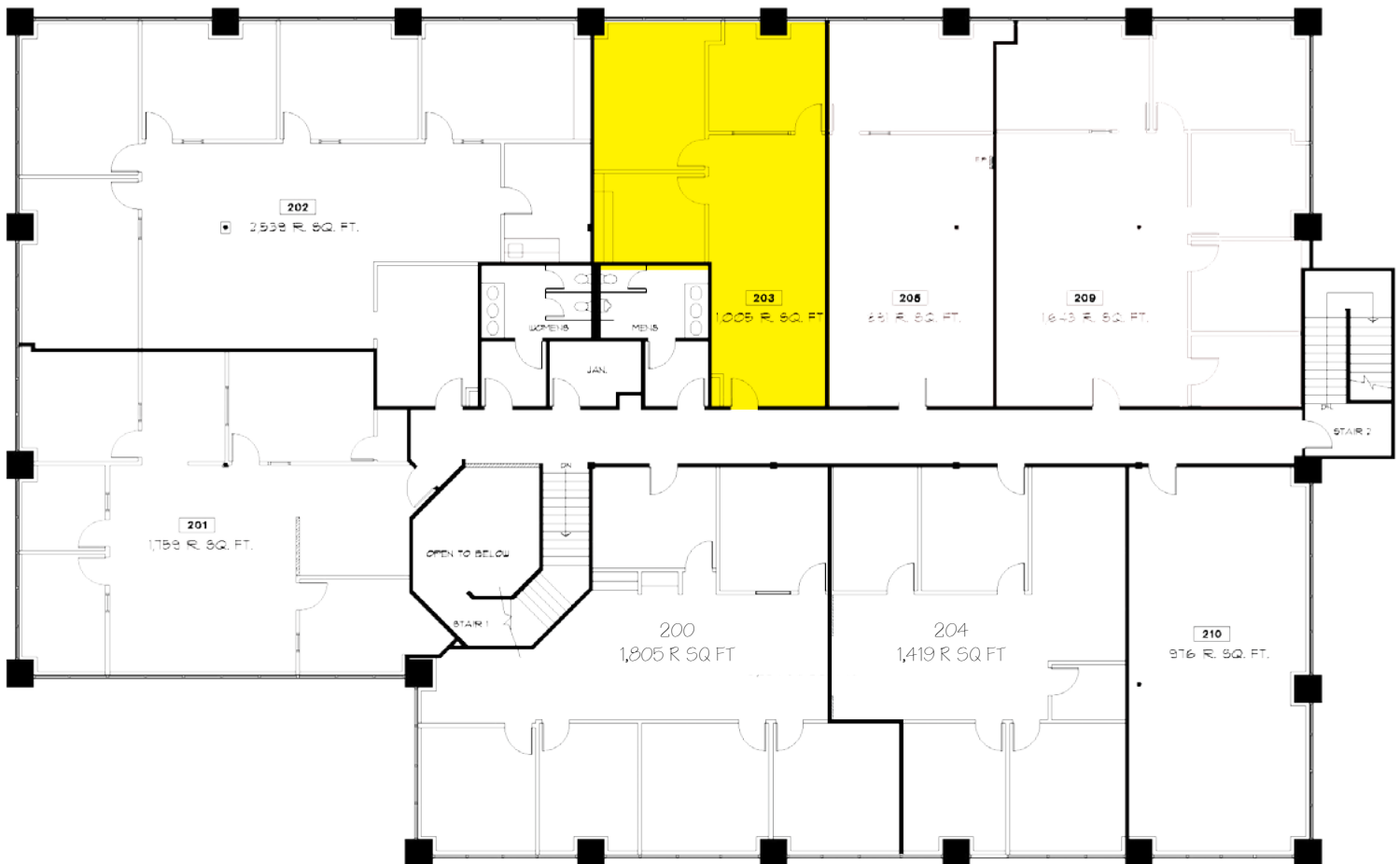
16480 HARBOR BLVD | FOUNTAIN VALLEY, CA 92708

AVAILABLE SUITES

| SUITE | SQ. FT. | ASKING RATE |
|-----------|-----------|-----------------|
| Suite 203 | 1,005 RSF | \$1.60 / SF FSG |



FLOOR PLAN (NOT DRAWN TO SCALE)



FOR MORE INFORMATION, PLEASE CONTACT:

JOSH REILLY, MBA
Principal

DRE#: 01474368
T: 949.525.2720
E: jreilly@leelalb.com

Copyright © Lee & Associates. All rights reserved. No part of this work may be reproduced or distributed without written permission of the copyright owner. The information contained in this report was gathered by Lee & Associates from sources believed to be reliable. Lee & Associates, however, makes no representation concerning the accuracy or completeness of such information and expressly disclaims any responsibility for any inaccuracy contained herein. 5.1.23