

# 165 10TH STREET

FOR LEASE | CREATIVE PLUG & PLAY OFFICE SUITE

**TCP**  
**TOUCHSTONE**  
COMMERCIAL PARTNERS



[WWW.TCPRE.COM](http://WWW.TCPRE.COM)

**ETHAN MANN**

C 415.990.9127

[ethan@tcpre.com](mailto:ethan@tcpre.com) DRE # 02223262

**GEORGE FARLEY**

C 415.994.5767

[george@tcpre.com](mailto:george@tcpre.com) DRE # 02233755



# 165 10TH STREET

## PROPERTY SUMMARY

### ADDRESS

165 10th Street, San Francisco, CA 94103

### AVAILABLE SPACE

Suite 300: +/- 600 Square Feet

### RENTAL RATE

\$2,750 / Month, Net Of Utilities

### AVAILABLE

Immediately

## SUITE ATTRIBUTES

- + Retrofitted Brick & Timber San Francisco Landmark Building
- + Move-In Ready & Furniture Available
- + Open Work Space
- + Building Reception Area
- + Shared Kitchenette
- + Secured Entry
- + Abundance of Natural Light & Skylights





# 165 10TH STREET

## LOCATION OVERVIEW

Desirable South of Market location, walkable to many amenities and to surrounding neighborhoods.



**10 MIN** to Market St.  
**10 MIN** to Civic Center Bart



**05 MIN** to Hayes Valley  
**10 MIN** to Union Square  
**15 MIN** to Financial District



**03 MIN** to 101 On-Ramp  
**05 MIN** to 80 On-Ramp





# 165 10TH STREET

## NEARBY AMENITIES

- 1..... Kama Sushi Soma
- 2..... Azúcar Lounge
- 3..... Driftwood
- 4..... Don Ramon's
- 5..... Basil Thai Restaurant & Bar
- 6..... Trademark & Copyright
- 7..... Sightglass Coffe
- 8..... Peet's Coffee
- 9..... Cadillac Outdoor Bar & Grill
- 10..... Cumaica: Artesanos del Cafe
- 11..... Blue Bottle Coffee
- 12..... Kagawa-Ya Udon
- 13..... Basil Canteen
- 14..... Eat Sushi Restaurant
- 15..... Sushi Ondo
- 16..... Joint Venture Kitchen
- 17..... Costco Wholesale
- 18..... Trader Joe's
- 19..... SoMa StrEat Food Park
- 20..... The Willows

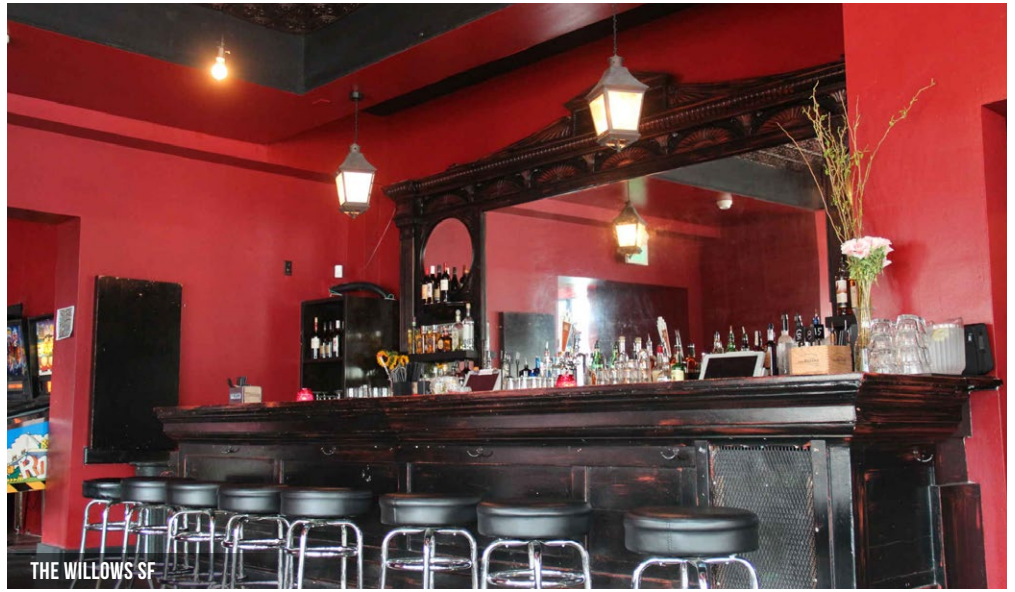




# 165 10TH STREET



TRADEMARK SPORTS BAR



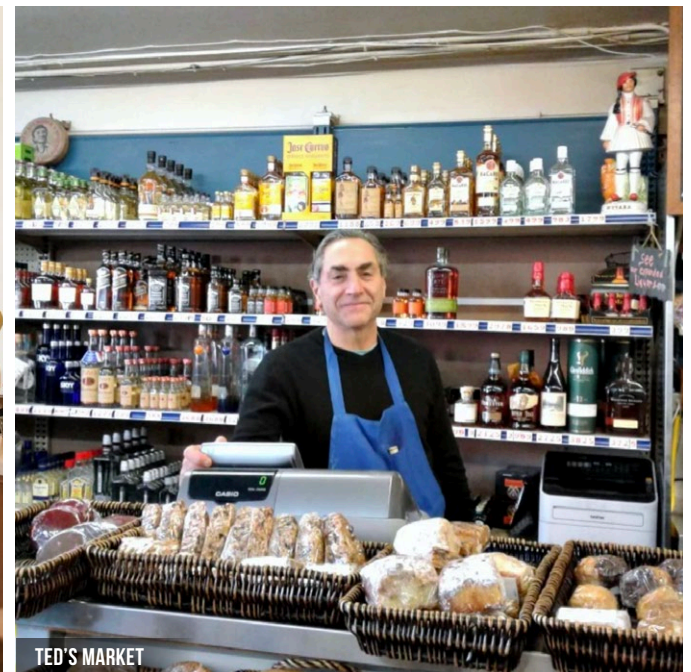
THE WILLOWS SF



BASIL THAI RESTAURANT



SIGHTGLASS COFFEE



TED'S MARKET



165 10TH  
STREET



Corp. Lic. 01112906  
[www.tcpre.com](http://www.tcpre.com)

**ETHAN MANN**

C 415.990.9127

[ethan@tcpre.com](mailto:ethan@tcpre.com) DRE # 02223262

**GEORGE FARLEY**

C 415.994.5767

[george@tcpre.com](mailto:george@tcpre.com) DRE # 02233755

This document has been prepared by Touchstone Commercial Partners for advertising and general information only. Touchstone Commercial Partners makes no guarantees, representations or warranties of any kind, expressed or implied, regarding the information including, but not limited to, warranties of content, accuracy and reliability. Any interested party should undertake their own inquiries as to the accuracy of the information. Touchstone Commercial Partners excludes unequivocally all inferred or implied terms, conditions and warranties arising out of this document and excludes all liability for loss and damages arising there from. This publication is the copyrighted property of Touchstone Commercial Partners and/or its licensor(s). ©2026. All rights reserved.