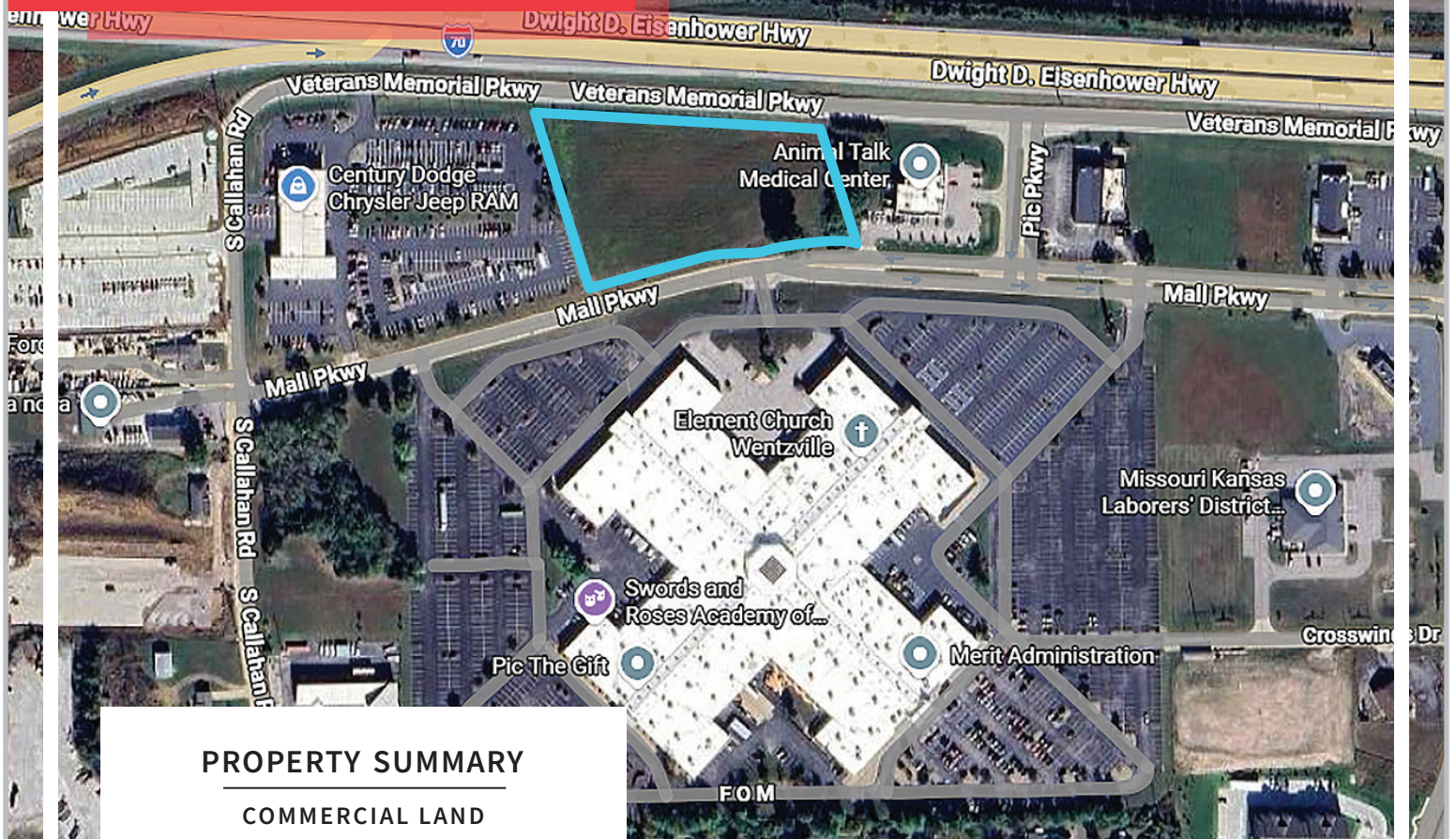


# FOR SALE

2.88 ac Veterans Memorial Pkwy, Wentzville, MO 63385

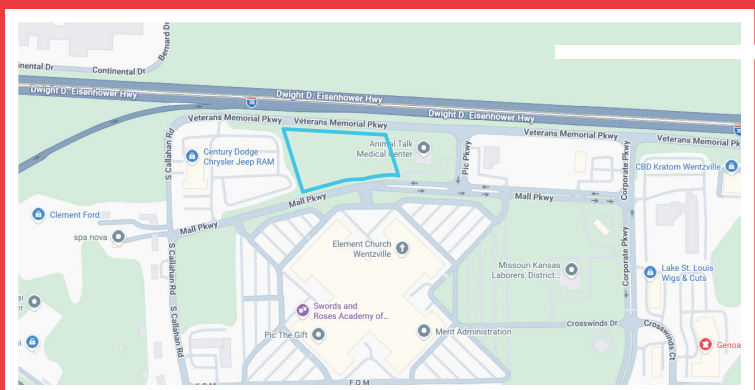


## PROPERTY SUMMARY


### COMMERCIAL LAND

- 2.88 ac on Veterans Memorial Pkwy in Wentzville.
- Parcel 4-0019-S029-00-0002.1000000
- Located between I64 and Hwy A on the South side.
- Zoned in Wentzville as PDXD potential C2 and C3 uses.
- Level ground.
- Approximately 525 ft visible from both east and west bound.
- Utilities available; Sewer, electric, Water, Gas and Phone.

**SALE PRICE: 1,490,000.00**



 Listing Agent **Danny Kluesner**

 Cell **314-712-0055**

 **kluesner@shockleycommercial.com**



501 First Capital Dr. Suite 5,  
St. Charles MO 63301



Office **636-946-9753**



[www.shockleycommercial.com](http://www.shockleycommercial.com)