

LOTZ ROAD CANTON, MICHIGAN

LAND FOR SALE
7.72 Acres Available



I-275 FRONTAGE



PROPERTY FEATURES

- 7.72 acres available
- Lt. Zoning
- Frontage along I-275 Expressway
- Sale Price: \$245,000 (\$31,735.75/acre)



For more information, please contact:

STEVE GORDON
(248) 948 0101
sgordon@signatureassociates.com

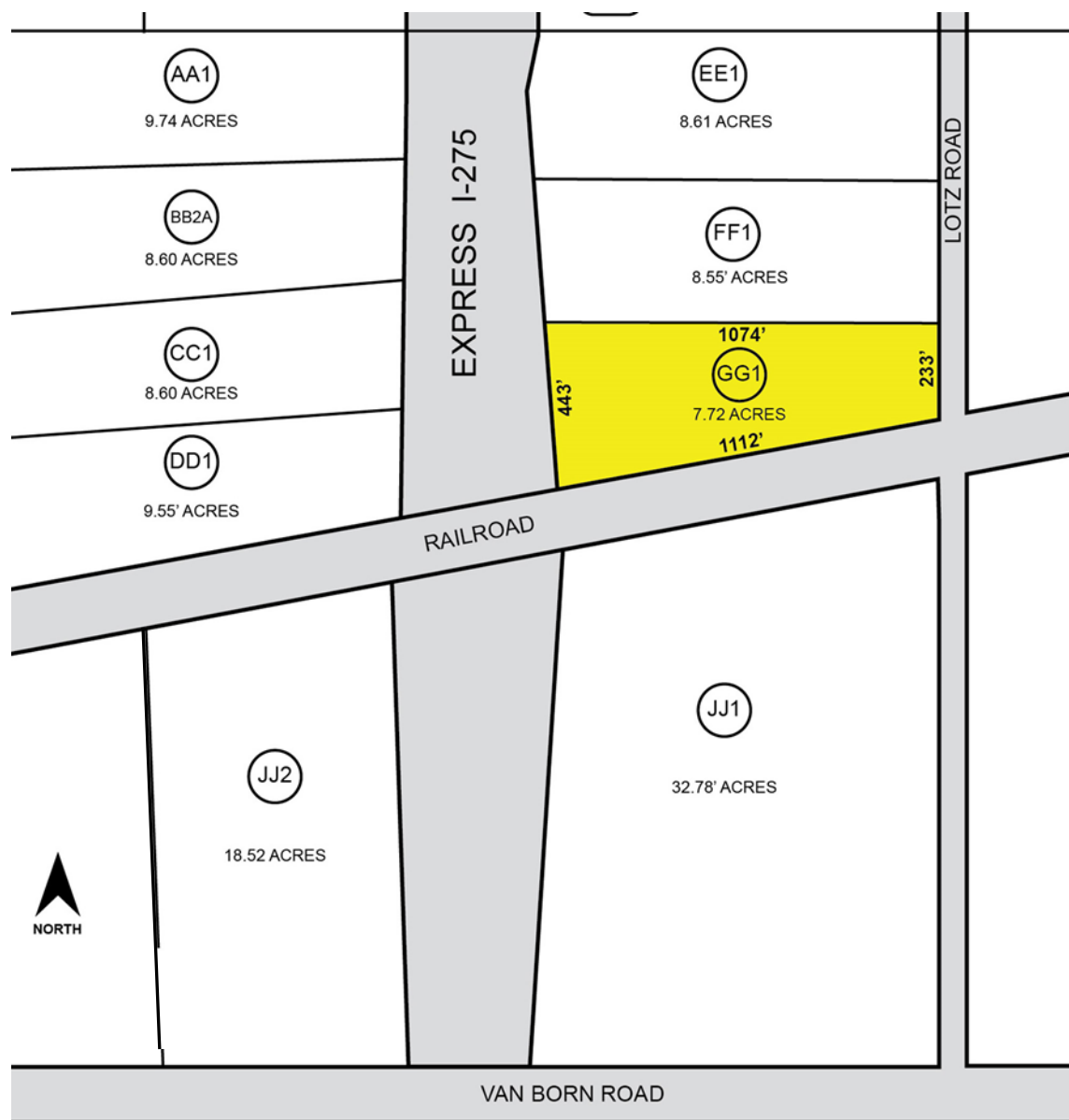
SIGNATURE ASSOCIATES
One Towne Square, Suite 1200
Southfield, MI 48076
www.signatureassociates.com

Lotz Road – Canton, Michigan

Land For Sale

7.72
Acres
AVAILABLE

Site Plan



For more information, please contact:

STEVE GORDON

(248) 948 0101

sgordon@signatureassociates.com

SIGNATURE ASSOCIATES
One Towne Square, Suite 1200
Southfield, MI 48076
www.signatureassociates.com

Information is subject to verification and no liability for errors or omissions is assumed. Price is subject to change and listing withdrawal.