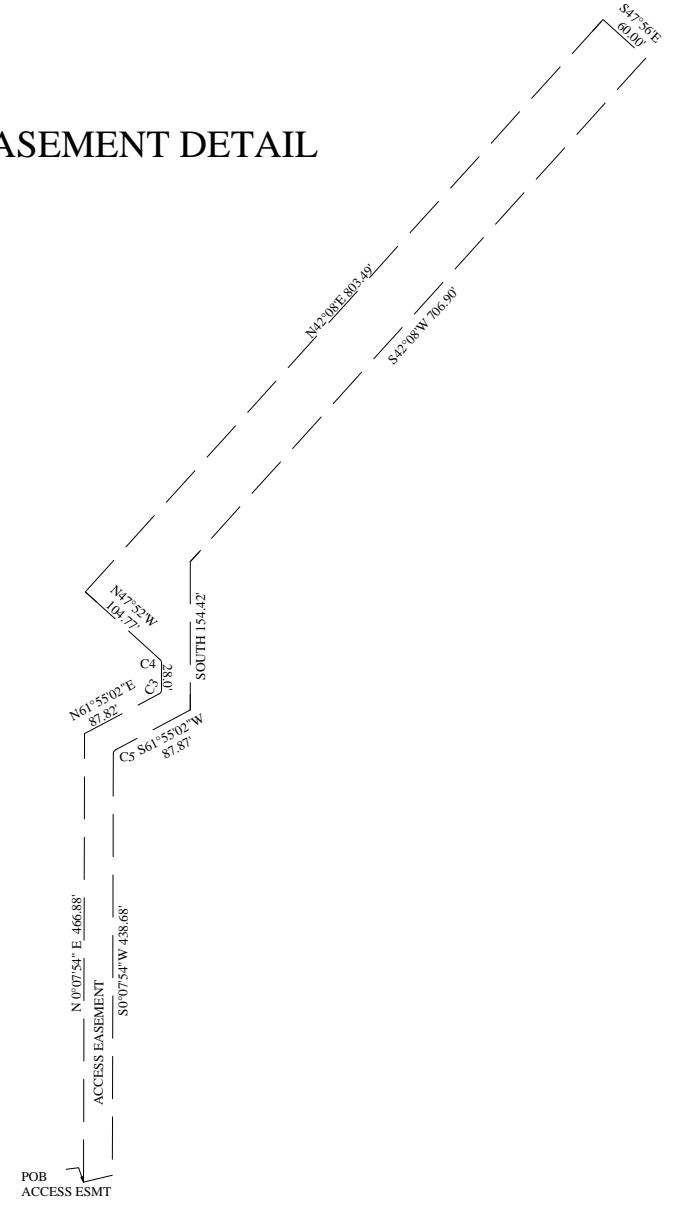
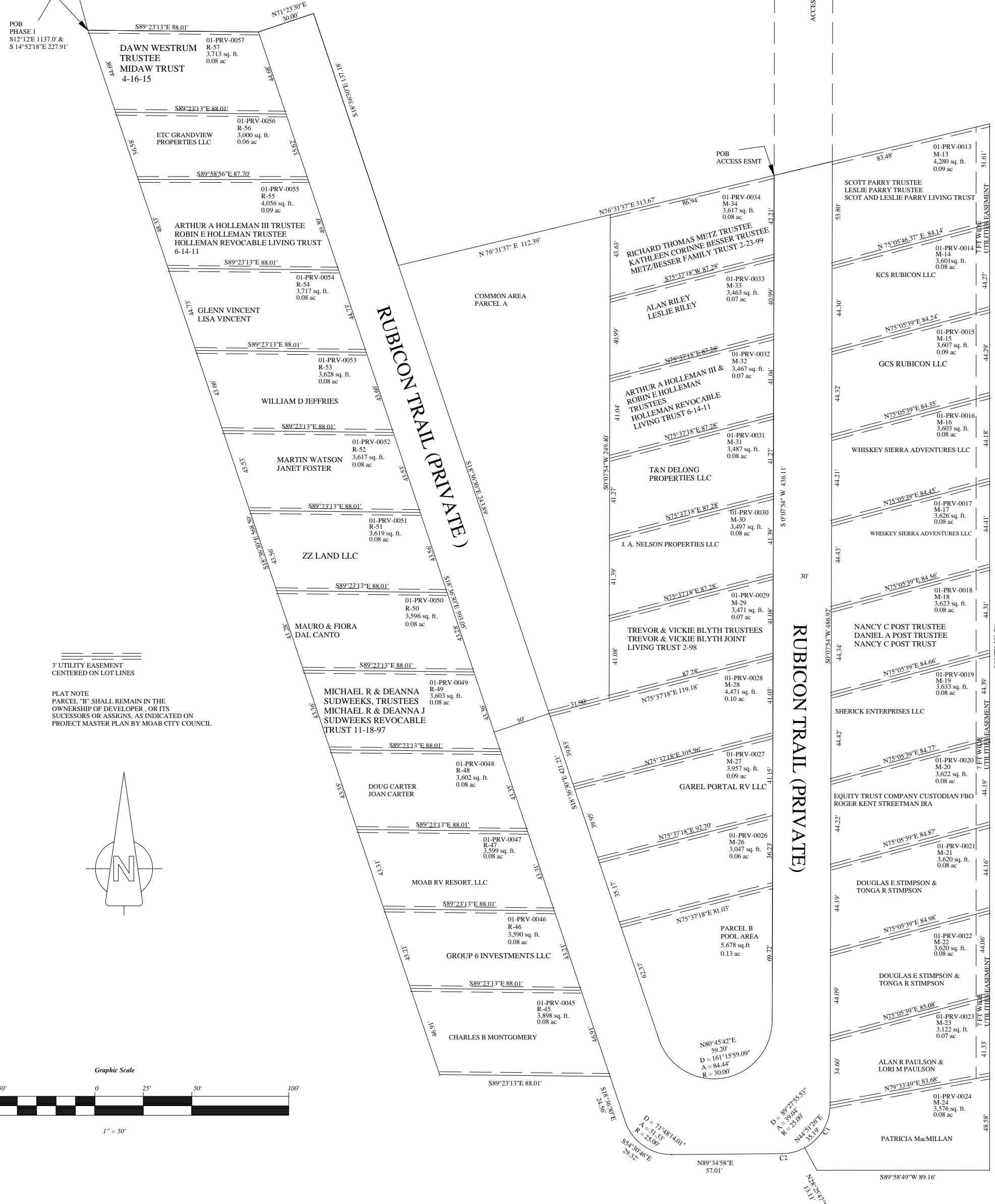


PORTAL RV RESORT PHASE 1

A SUBDIVISION LOCATED IN THE NE¼ OF SECTION 35
T25S R21E SLB&M, GRAND COUNTY, UTAH

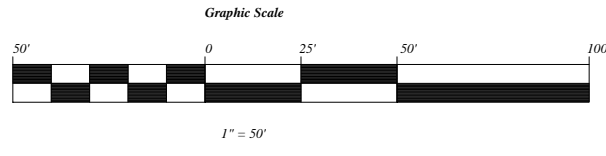
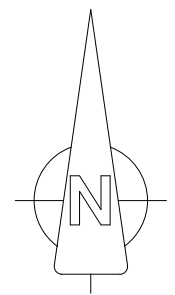
EASEMENT DETAIL

POB
PHASE 1
S12°12'E 1137.0' &
S14°52'18"E 227.91'



3' UTILITY EASEMENT
CENTERED ON LOT LINES

PLAT NOTE
PARCEL "B" SHALL REMAIN IN THE
OWNERSHIP OF DEVELOPER OR ITS
SUCCESSORS OR ASSIGNS, AS INDICATED ON
PROJECT MASTER PLAN BY MOAB CITY COUNCIL



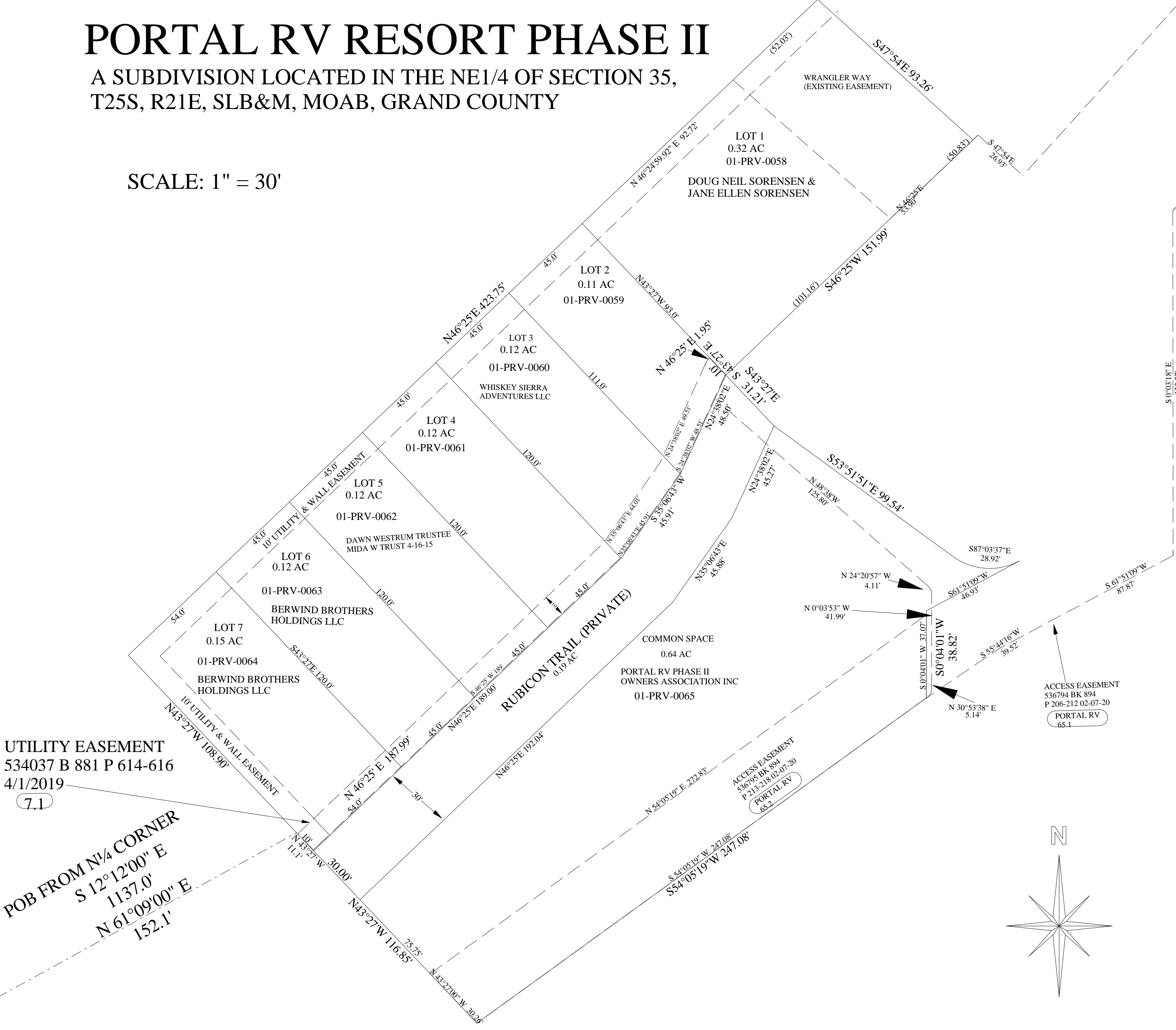
CURVE TABLE	LENGTH	RADIUS	DELTA	CHD	BEARING	CHORD DISTANCE
C1	26.81	25.0	61°26'19"	N30°51'03"E	25.54	
C2	12.22	25.0	28°00'46"	N75°34'36"E	12.10	
C3	5.40	5.0	51°55'02"	N30°57'31"E	5.14	
C4	4.18	5.0	47°52'00"	N23°56'00"W	4.06	
C5	5.39	5.0	61°47'08"	S31°01'28"W	5.13	

THIS PLAT IS FOR NAME CHANGE RECORDS ONLY
SEE OFFICIAL PLAT FOR ALL OTHER PURPOSES

PORTAL RV RESORT PHASE II

A SUBDIVISION LOCATED IN THE NE1/4 OF SECTION 35,
T25S, R21E, SLB&M, MOAB, GRAND COUNTY

SCALE: 1" = 30'



UTILITY EASEMENT
534037 B 881 P 614-616
4/1/2019
7.1

POB FROM N¼ CORNER
S 12°12'00" E
1137.0'
N 61°09'00" E
152.1'

