



GROCERY ANCHORED NEW MARK S.C.

102nd Street & N. Oak Trafficway, Kansas City, Missouri



RETAIL PAD BUILDING



LEASE RATE: \$18/SF NNN | IN-LINE SPACES AVAILABLE

DEMOGRAPHICS

	1 mile	3 miles	5 miles
Estimated Population	10,483	41,421	97,672
Avg. Household Income	\$89,448	\$97,348	\$92,717

- 1,000 SF; 1,142 SF; and 1,982 SF in-line spaces - FOR LEASE
- Located two miles north of 152 Highway & 1/2 mile east of 169 Highway
- Anchored by 52,000 sq ft high volume Sun Fresh Grocery
- Great neighborhood center surrounded by residential

 [CLICK HERE TO VIEW MORE LISTING INFORMATION](#)

For More Information Contact:

Exclusive Agents

JODY MINDER | 816.916.4039 | jminder@blockandco.com

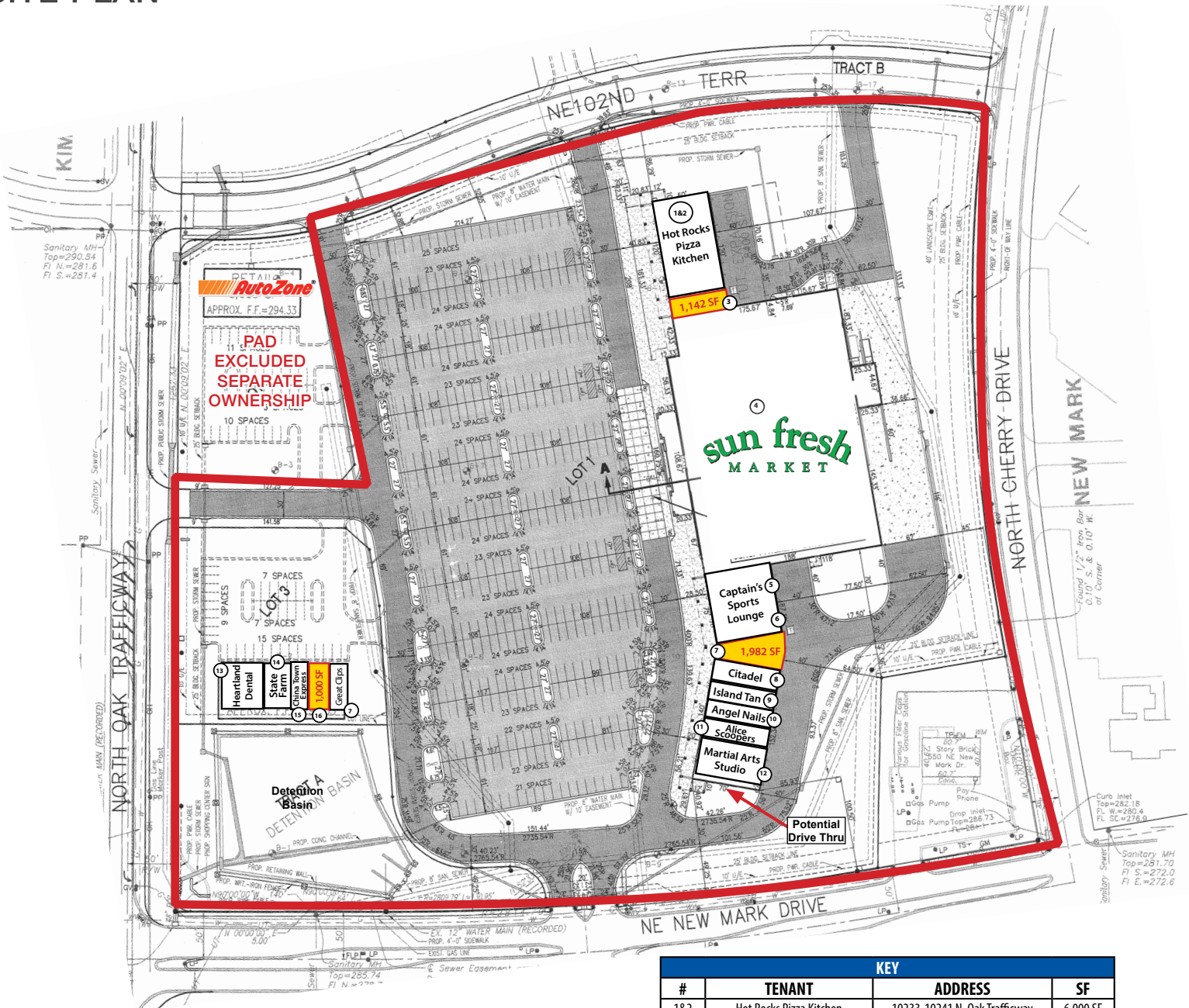
DAVID BLOCK | 816.412.7400 | dblock@blockandco.com



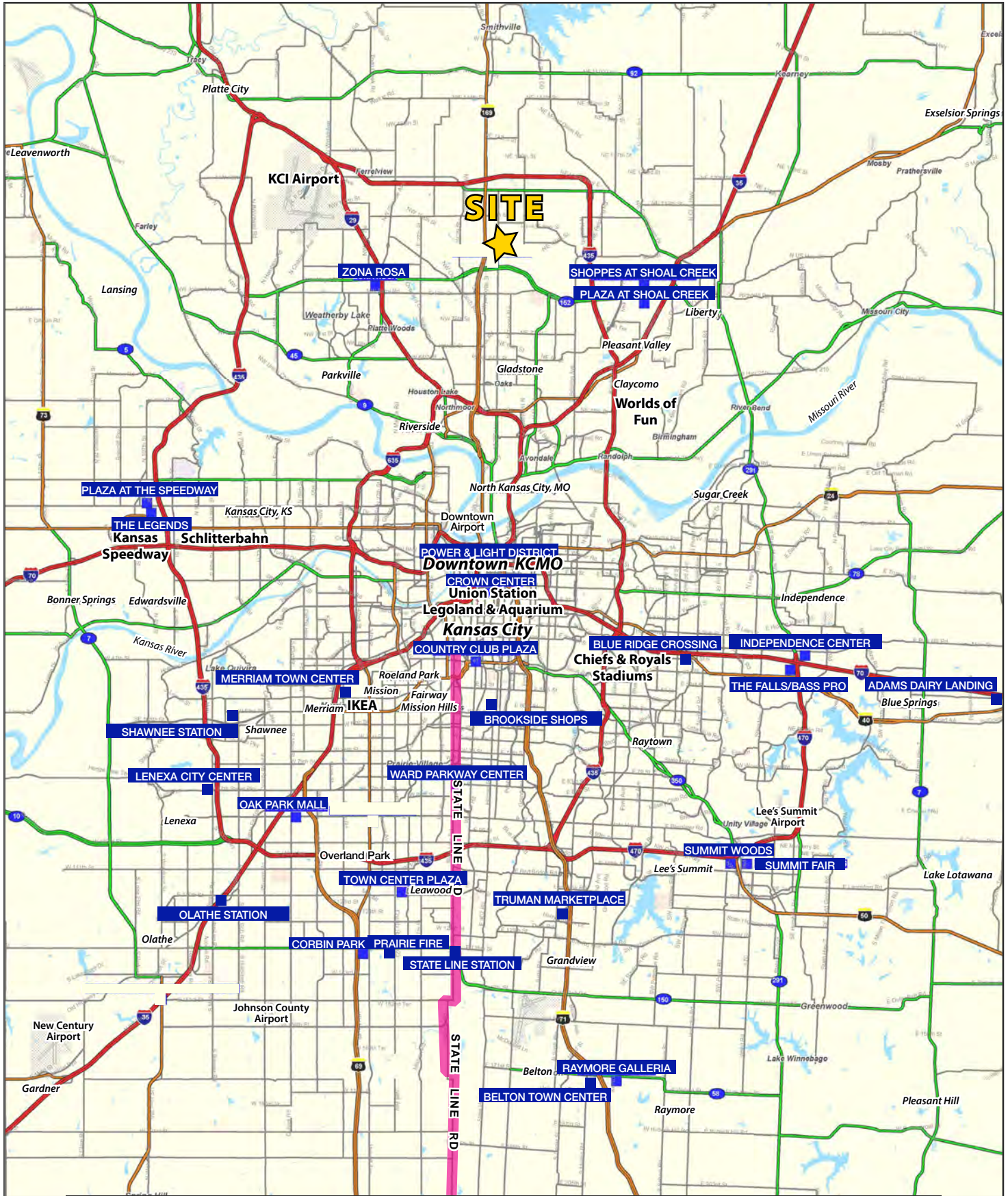
AERIAL DRONE PHOTOS



SITE PLAN



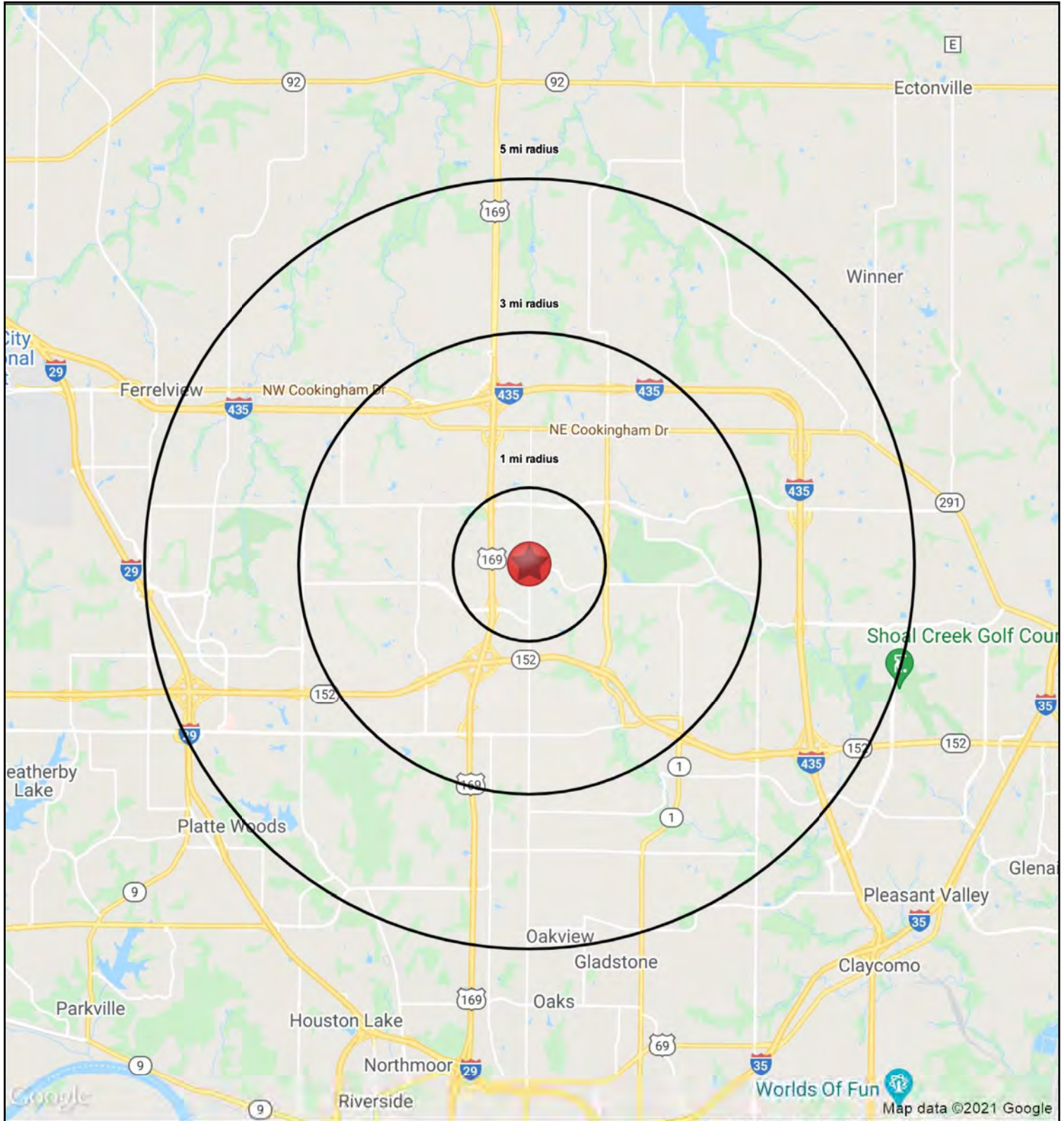
KEY			
#	TENANT	ADDRESS	SF
1&2	Hot Rocks Pizza Kitchen	10233-10241 N. Oak Trafficway	6,000 SF
3	AVAILABLE	10231 N. Oak Trafficway	1,142 SF
4	Sun Fresh	10225 N. Oak Trafficway	52,000 SF
5	Captain's Sports Lounge	10221 N. Oak Trafficway	3,500 SF
6	Captain's Sports Lounge	10219 N. Oak Trafficway	1,750 SF
7	AVAILABLE	10217 N. Oak Trafficway	1,982 SF
8	Citadel Smoke Shop	10215 N. Oak Trafficway	1,400 SF
9	Island Tan	10211 N. Oak Trafficway	1,400 SF
10	Angel Nails	10209 N. Oak Trafficway	1,400 SF
11	Alice Scoopers Ice Cream	10207 N. Oak Trafficway	1,400 SF
12	Martial Arts Studio	10203-10205 N. Oak Trafficway	2,800 SF
14	Heartland Dental	10201 N. Oak Trafficway #100 - 300	2,564 SF
15	Nowatzki Insurance Agency	10201 N. Oak Trafficway #400 - 500	1,571 SF
16	China Town Express	10201 N. Oak Trafficway #600	975 SF
17	AVAILABLE	10201 N. Oak Trafficway #700	1,000 SF
18	Great Clips	10201 N. Oak Trafficway #800	1,000 SF





GROCERY ANCHORED NEW MARK S.C.

102nd Street & N. Oak Trafficway, Kansas City, Missouri





GROCERY ANCHORED NEW MARK S.C.

102nd Street & N. Oak Trafficway, Kansas City, Missouri

HS1

102nd Street & N. Oak Trafficway		1 mi radius	3 mi radius	5 mi radius
Kansas City, MO 64155				
POPULATION	2021 Estimated Population	10,476	41,425	97,682
	2026 Projected Population	11,021	45,440	106,049
	2010 Census Population	9,066	34,418	82,734
	2000 Census Population	8,031	23,845	62,411
	Projected Annual Growth 2021 to 2026	1.0%	1.9%	1.7%
	Historical Annual Growth 2000 to 2021	1.4%	3.5%	2.7%
	2021 Median Age	36.1	35.5	37.2
HOUSEHOLDS	2021 Estimated Households	3,885	15,675	38,625
	2026 Projected Households	4,021	16,824	40,930
	2010 Census Households	3,412	13,374	33,763
	2000 Census Households	2,890	8,942	25,378
	Projected Annual Growth 2021 to 2026	0.7%	1.5%	1.2%
	Historical Annual Growth 2000 to 2021	1.6%	3.6%	2.5%
RACE AND ETHNICITY	2021 Estimated White	84.6%	83.2%	81.1%
	2021 Estimated Black or African American	7.1%	8.5%	9.4%
	2021 Estimated Asian or Pacific Islander	2.5%	2.5%	3.1%
	2021 Estimated American Indian or Native Alaskan	0.5%	0.4%	0.5%
	2021 Estimated Other Races	5.2%	5.3%	5.9%
	2021 Estimated Hispanic	7.4%	7.5%	7.8%
INCOME	2021 Estimated Average Household Income	\$89,460	\$97,364	\$92,728
	2021 Estimated Median Household Income	\$82,776	\$89,530	\$81,962
	2021 Estimated Per Capita Income	\$33,190	\$36,889	\$36,692
EDUCATION (AGE 25+)	2021 Estimated Elementary (Grade Level 0 to 8)	0.8%	1.2%	1.2%
	2021 Estimated Some High School (Grade Level 9 to 11)	4.5%	4.4%	3.8%
	2021 Estimated High School Graduate	23.8%	21.5%	23.3%
	2021 Estimated Some College	22.0%	21.8%	21.5%
	2021 Estimated Associates Degree Only	8.0%	9.3%	9.3%
	2021 Estimated Bachelors Degree Only	32.0%	28.0%	26.5%
	2021 Estimated Graduate Degree	8.8%	13.8%	14.3%
BUSINESS	2021 Estimated Total Businesses	152	718	1,958
	2021 Estimated Total Employees	1,124	6,952	21,521
	2021 Estimated Employee Population per Business	7.4	9.7	11.0
	2021 Estimated Residential Population per Business	69.0	57.7	49.9

