

# 1514 Old Dean Forest Road - B

182,732 SF Up To Full Building Warehouse/Distribution

*Available Now - Sublease Term Through 9/30/2027*

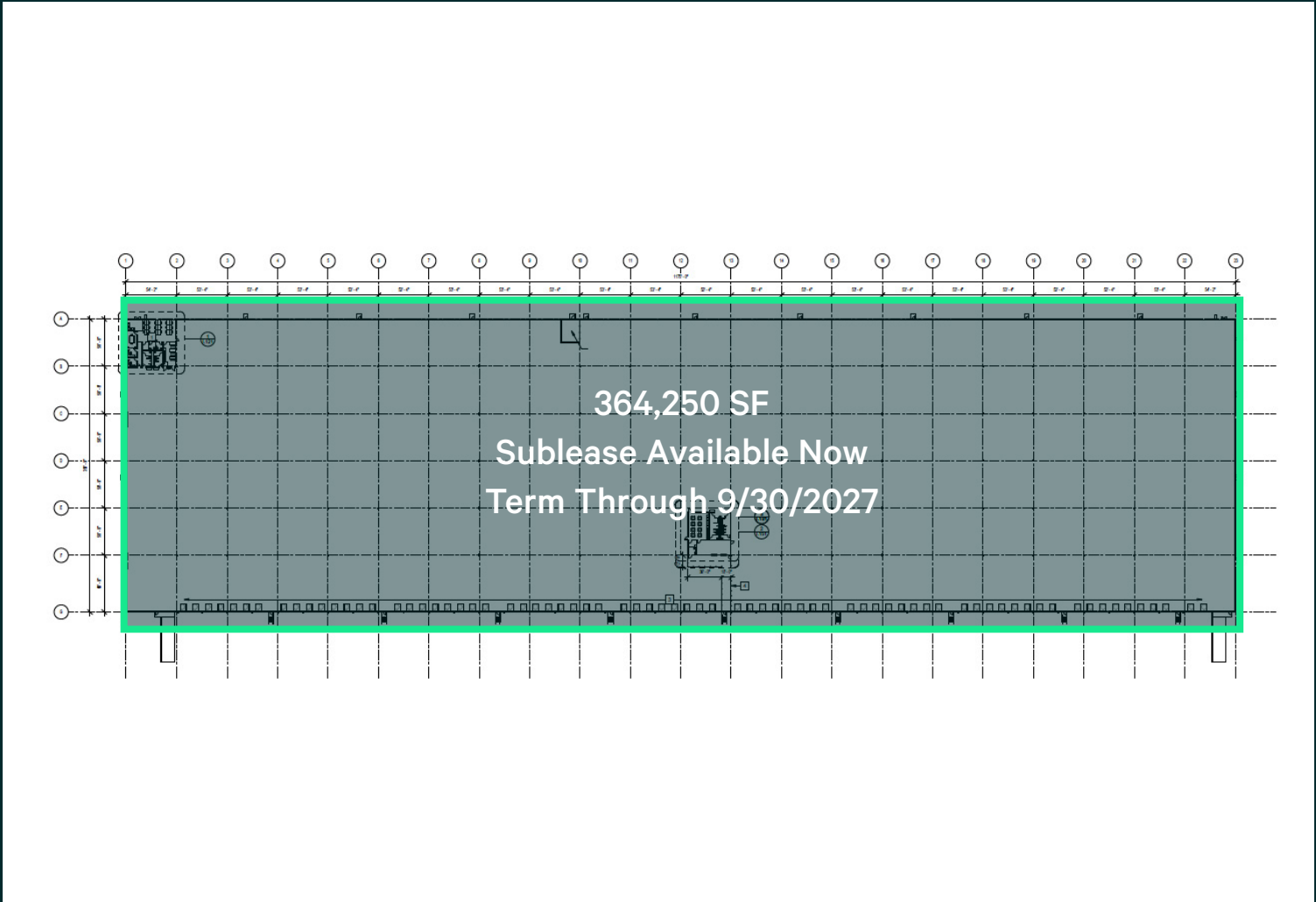
Located 6.1 Miles From The Port of Savannah



182,732 SF Up To  
364,250 SF Available Now

182,732 SF Up To 364,250 SF Warehouse/Distribution  
1514 Old Dean Forest Rd - B | Garden City, GA 31408

# Site Plan - Full Building

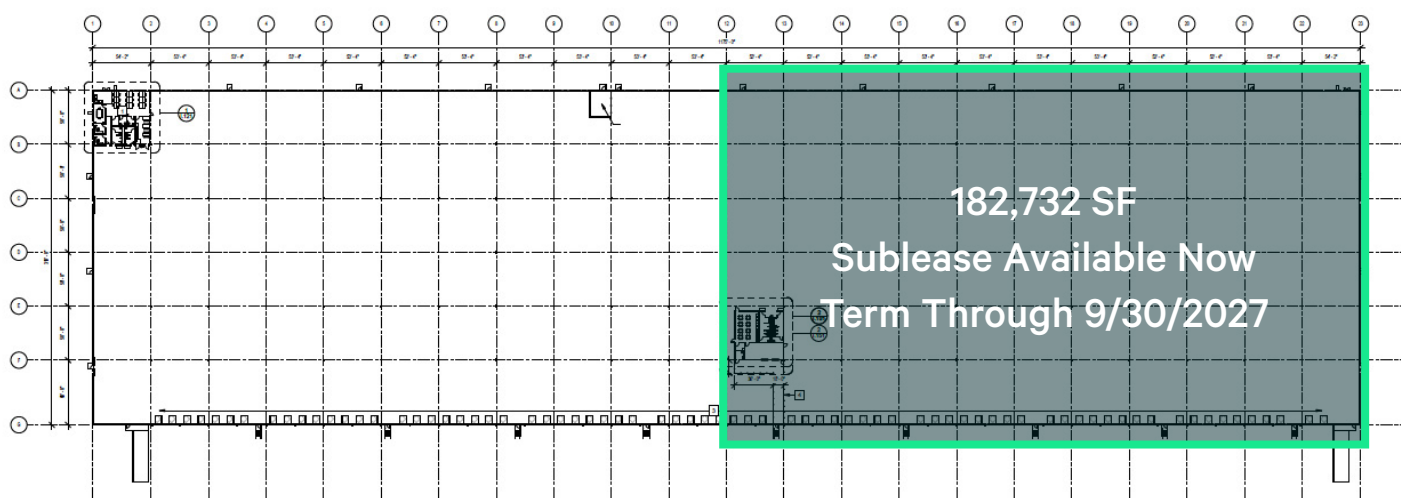


Full Building Specs		
Sublease Space: 364,250 SF	Auto Parking: 240	Column Spacing: 53' w x 50'd
Class: A	Trailer Parking:	Sprinkler: ESFR
Warehouse Office: 2,042 SF	Dock Doors: 83 (40,000 lb mechanical pit levelers, Z-bars, and dock seals)	Floor Slab: 6"
Clear Height: 32'	Drive Ins: 2 (12x14)	

182,732 SF Up To 364,250 SF Warehouse/Distribution

1514 Old Dean Forest Rd - B | Garden City, GA 31408

# Site Plan - Partial



## Partial Building Specs

Sublease Space: 182,732 SF

Auto Parking: 125

Column Spacing: 53' w x 50'd

Class: A

Trailer Parking: 43

Sprinkler: ESFR

Warehouse Office: 2,042 SF

Dock Doors: 36 (40,000 lb  
mechanical pit levelers, Z-bars, and  
dock seals)

Floor Slab: 6"

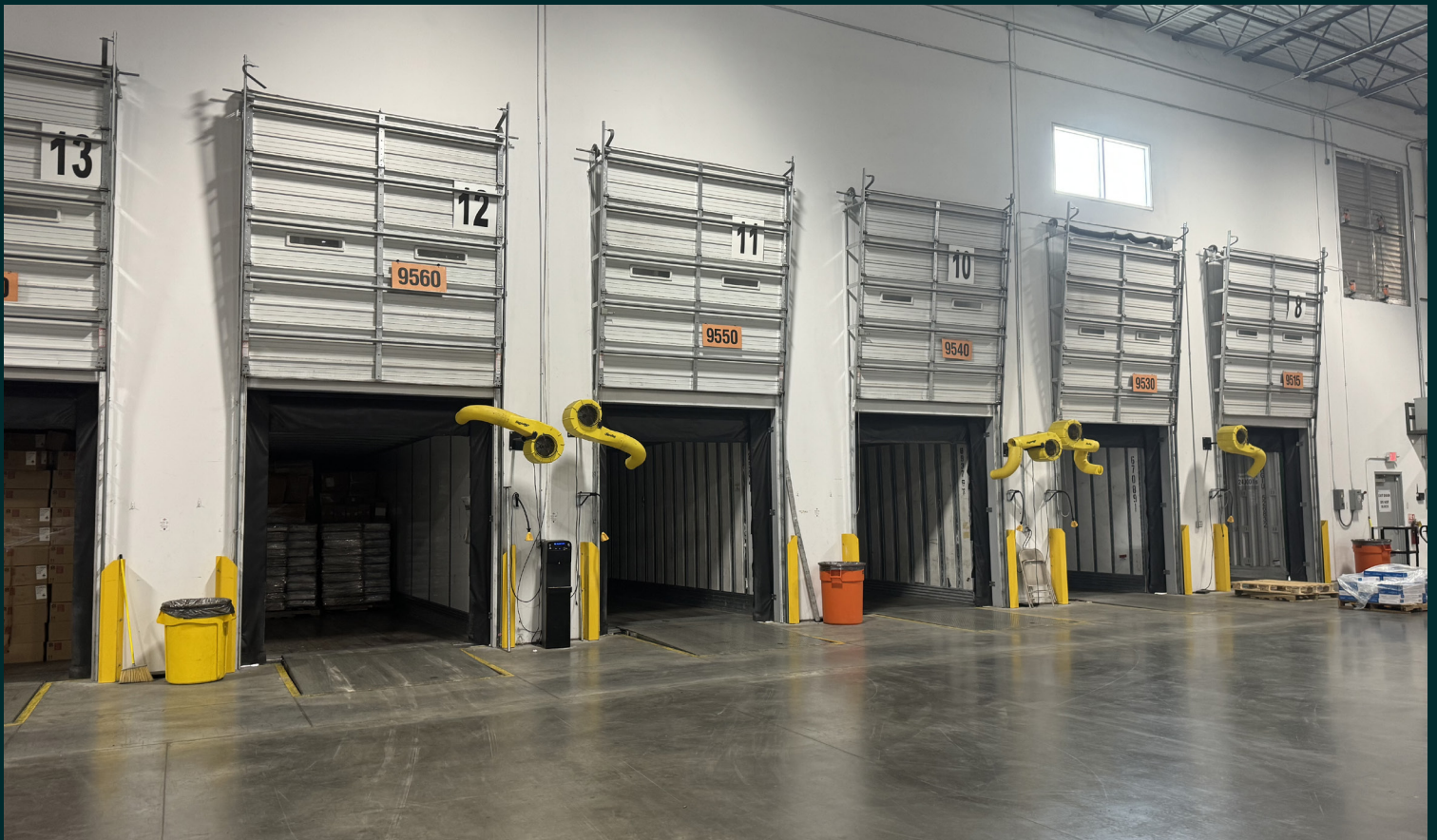
Clear Height: 32'



182,732 SF Up To 364,250 SF Warehouse/Distribution  
1514 Old Dean Forest Rd - B | Garden City, GA 31408

For Sublease

# Interior Photos

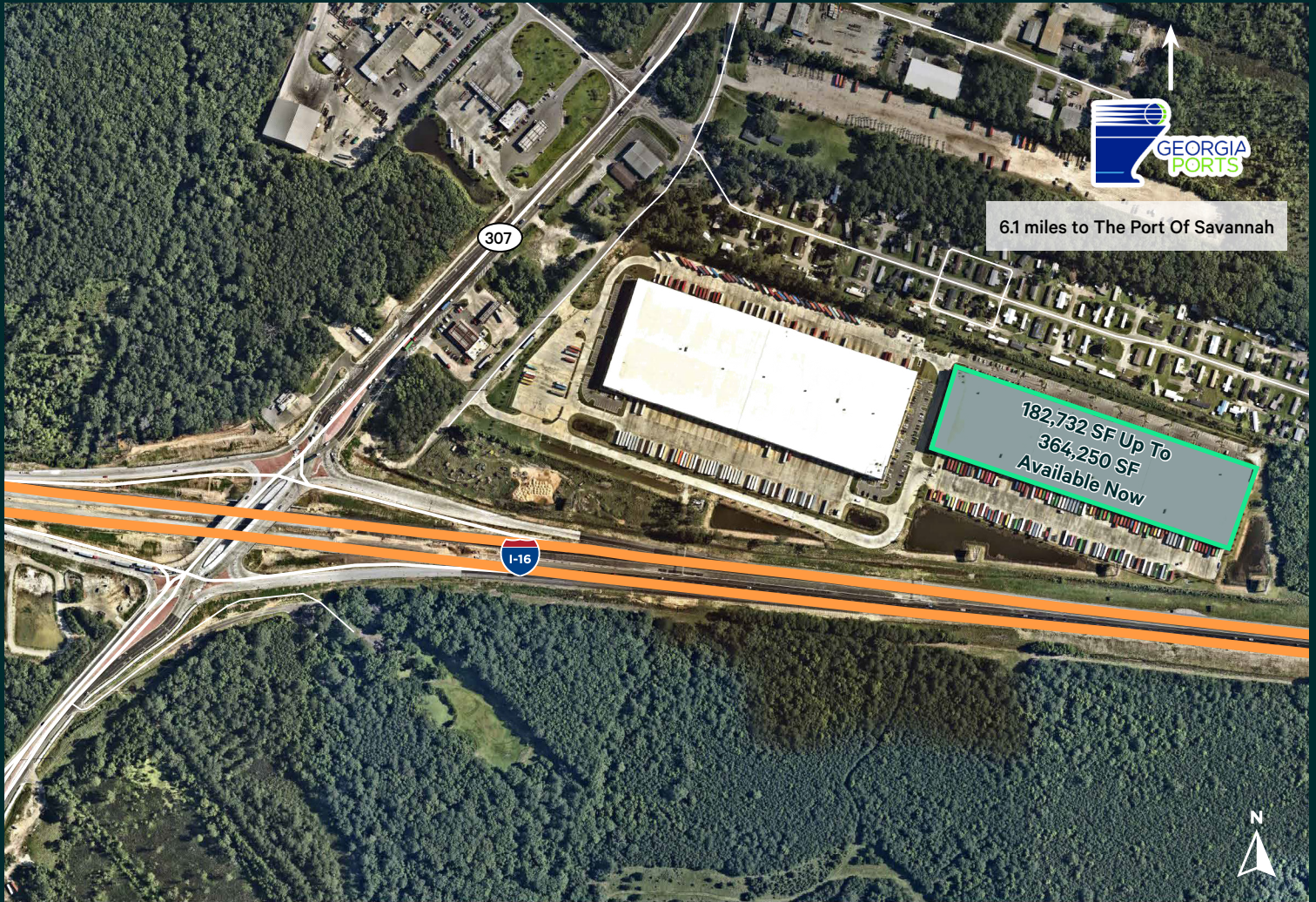




For Sublease

# Prime Location

6.1 Miles To The Port Of Savannah



## Contact Us

**Bill Sparks, SIOR**  
Executive Vice President  
+1 912 659 1147  
bill.sparks@cbre.com

**CBRE, Inc.**  
144 Habersham Street  
Savannah, GA 31401  
+1 912 228 3528

© 2025 CBRE, Inc. All rights reserved. This information has been obtained from sources believed reliable, but has not been verified for accuracy or completeness. You should conduct a careful, independent investigation of the property and verify all information. Any reliance on this information is solely at your own risk. CBRE and the CBRE logo are service marks of CBRE, Inc. All other marks displayed on this document are the property of their respective owners, and the use of such logos does not imply any affiliation with or endorsement of CBRE. Photos herein are the property of their respective owners. Use of these images without the express written consent of the owner is prohibited.

[www.cbre.com/savannah](http://www.cbre.com/savannah)

**CBRE**