

5225 AUTO CLUB DRIVE  
DEARBORN, MICHIGAN

HI-TECH/OFFICE FOR SALE  
65,737 Square Feet Available



**SIGNATURE  
ASSOCIATES**  
KNOW SIGNATURE | KNOW RESULTS

**OFFICE PARK WEST**



## PROPERTY FEATURES

- 65,737 square feet available
- Office space to suit
- 13' typical clear height
- (1) 10' x 13' grade level door
- (2) truckwells
- Dual feed power
- Office/tech building in perfect location
- Excellent parking, and former data center
- Office, medical, and R & D uses
- Priced well below replacement cost
- Sale Price: \$3,100,000 (\$47.16/sq. ft.)



For more information, please contact:

**BRAD VIERGEVER**  
(248) 799 3146

[bviergever@signatureassociates.com](mailto:bviergever@signatureassociates.com)

**CHRIS SECONTINE**  
(248) 799 3174

[csecontine@signatureassociates.com](mailto:csecontine@signatureassociates.com)

**SIGNATURE ASSOCIATES**  
One Towne Square, Suite 1200  
Southfield, MI 48076  
[www.signatureassociates.com](http://www.signatureassociates.com)

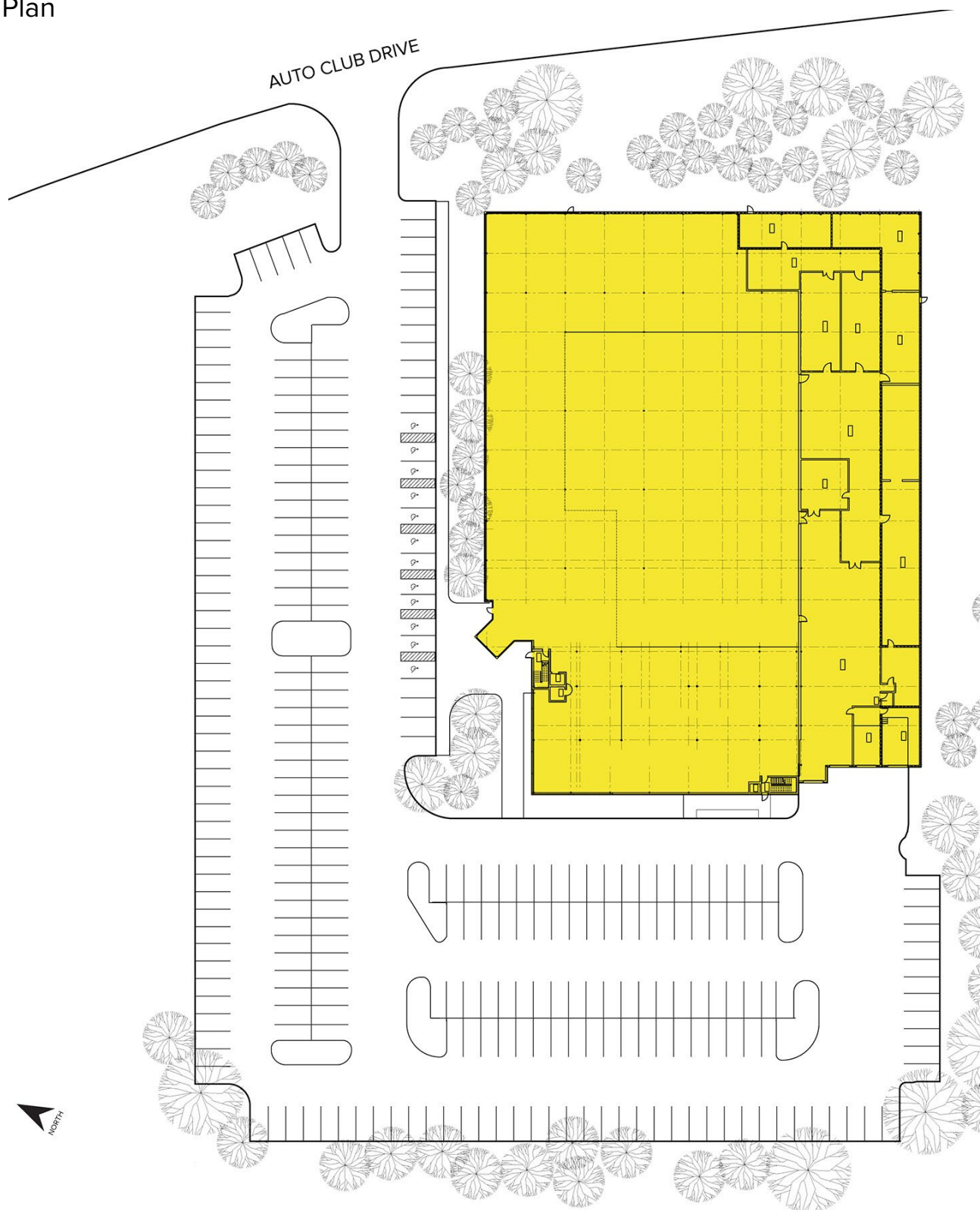
Information is subject to verification and no liability for errors or omissions is assumed. Price is subject to change and listing withdrawal.

# 5225 Auto Club Drive – Dearborn, Michigan

## Hi-Tech/Office For Sale

65,737  
Square Feet  
AVAILABLE

### Site Plan



For more information, please contact:

**BRAD VIERGEVER**  
(248) 799 3146

[bviergever@signatureassociates.com](mailto:bviergever@signatureassociates.com)

**CHRIS SECONTINE**  
(248) 799 3174

[csecontine@signatureassociates.com](mailto:csecontine@signatureassociates.com)

**SIGNATURE ASSOCIATES**  
One Towne Square, Suite 1200  
Southfield, MI 48076  
[www.signatureassociates.com](http://www.signatureassociates.com)

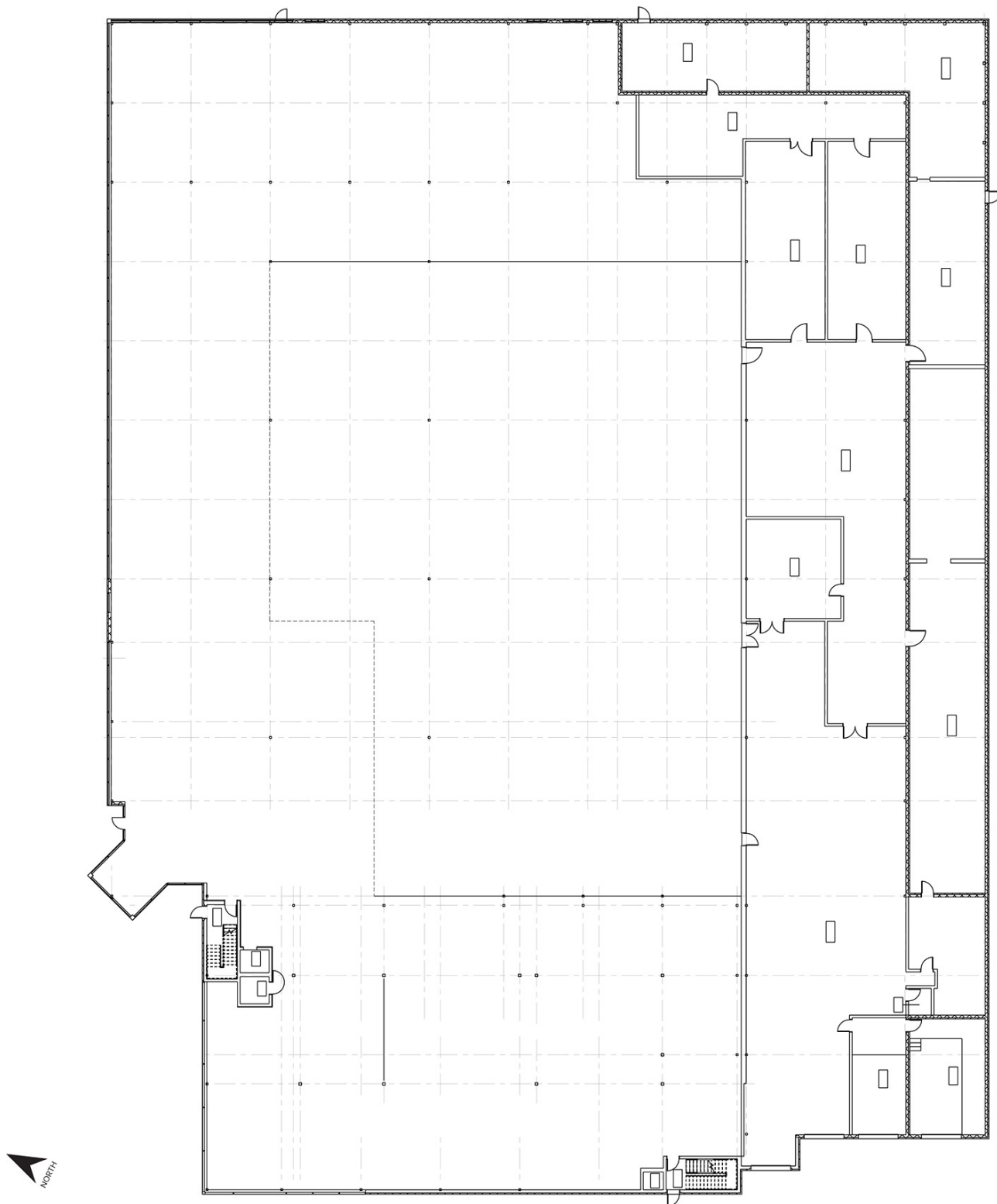
Information is subject to verification and no liability for errors or omissions is assumed. Price is subject to change and listing withdrawal.

# 5225 Auto Club Drive – Dearborn, Michigan

## Hi-Tech/Office For Sale

65,737  
Square Feet  
AVAILABLE

### Floor Plan



For more information, please contact:

**BRAD VIERGEVER**

(248) 799 3146

[bviergever@signatureassociates.com](mailto:bviergever@signatureassociates.com)

**CHRIS SECONTINE**

(248) 799 3174

[csecontine@signatureassociates.com](mailto:csecontine@signatureassociates.com)

**SIGNATURE ASSOCIATES**

One Towne Square, Suite 1200

Southfield, MI 48076

[www.signatureassociates.com](http://www.signatureassociates.com)

Information is subject to verification and no liability for errors or omissions is assumed. Price is subject to change and listing withdrawal.



# 5225 Auto Club Drive – Dearborn, Michigan

## Hi-Tech/Office For Sale

65,737  
Square Feet  
AVAILABLE

Aerial



For more information, please contact:

**BRAD VIERGEVER**  
(248) 799 3146

[bviergever@signatureassociates.com](mailto:bviergever@signatureassociates.com)

**CHRIS SECONTINE**  
(248) 799 3174

[csecontine@signatureassociates.com](mailto:csecontine@signatureassociates.com)

**SIGNATURE ASSOCIATES**  
One Towne Square, Suite 1200  
Southfield, MI 48076  
[www.signatureassociates.com](http://www.signatureassociates.com)

Information is subject to verification and no liability for errors or omissions is assumed. Price is subject to change and listing withdrawal.