

121

CORPORATE PARK



5,000 SF AVAILABLE

701 CANYON DRIVE | SUITE 110 | COPPELL, TX 75019

PROPERTY OVERVIEW

5,000 SF AVAILABLE, SUITE 110

CLASS A OFFICE BUILDING IN PARK ENVIRONMENT

SURFACE PARKING RATIO OF 5 SPACES PER 1,000 SF

TENANT MAINTAINS 24-HOUR CONTROL OF PREMISES

LOCATION OVERVIEW

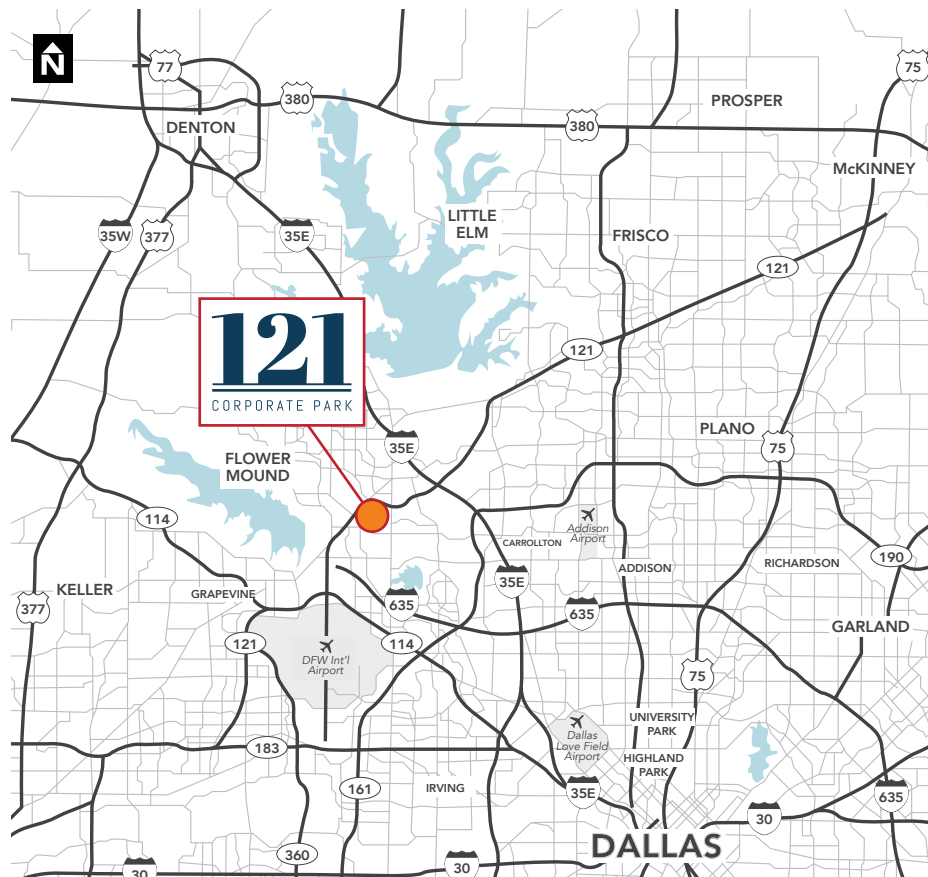
LOCATED OFF STATE HIGHWAY 121

IMMEDIATE ACCESS TO DFW AIRPORT (4 MILES)

CLOSE PROXIMITY TO: SH 121, SH 114 & I-635

DIRECT ACCESS TO DINING, HOSPITALITY, RETAIL/
ENTERTAINMENT AMENITIES

LOCATED IN A TIER 1 SCHOOL DISTRICT



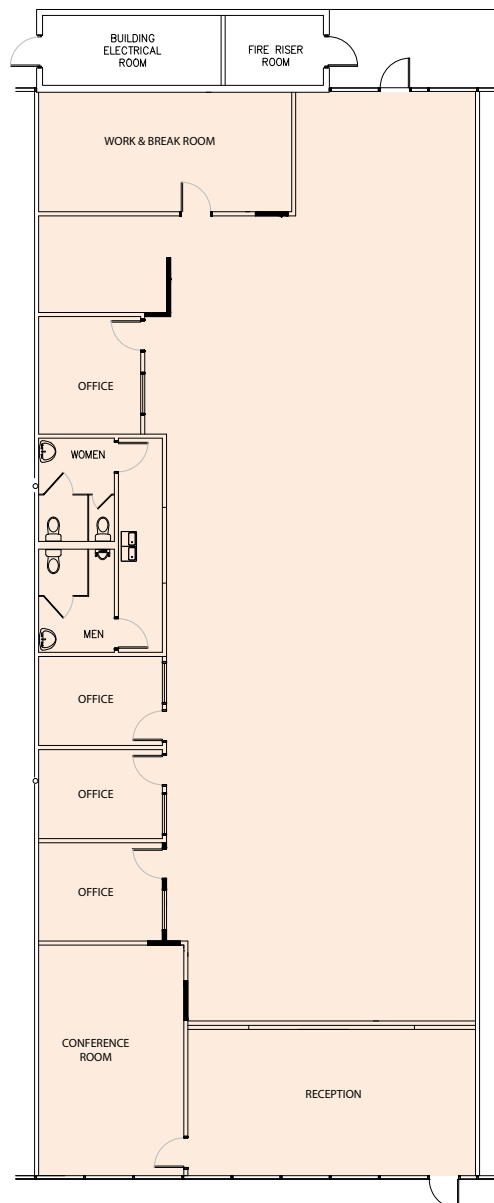
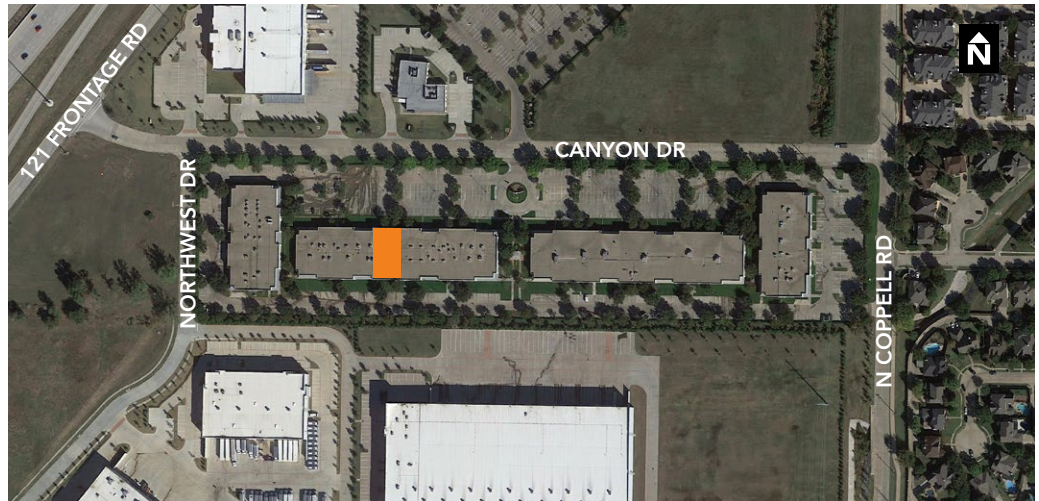
STREAM

JEREMY KELLY | 214-210-1360
JKELLY@STREAMREALTY.COM

BOB HAGEWOOD | 214-267-0471
BHAGEWOOD@STREAMREALTY.COM

5,000 SF AVAILABLE

701 CANYON DRIVE | SUITE 110 | COPPELL, TX 75019



SUITE 110
5,000 SF AVAILABLE



JEREMY KELLY | 214-210-1360
JKELLY@STREAMREALTY.COM

BOB HAGEWOOD | 214-267-0471
BHAGEWOOD@STREAMREALTY.COM