



WEST CREEK MEDICAL PARK

1300-1600 WILKES RIDGE DRIVE, HENRICO, VA 23233

NOW LEASING!



NEW MEDICAL OFFICE BUILDING NEAR SHORT PUMP INTERSECTION OF I-288 & W. BROAD ST

FEATURES

- ▶ TWO, two (2) story, 40,000 SF brick medical office buildings located in Short Pump at intersection of I-288 & W. Broad St
- ▶ Tenant improvement allowance, flexible lease terms
- ▶ Excellent access to I-288 (1.5 miles) and I-64 (2.0 miles)
- ▶ Monument signage available
- ▶ One of Richmond's hottest development areas
- ▶ Growing population of 50,000+ in the immediate area, expected to increase with more residential and commercial developments in the pipeline

DETAILS

Space Available	Building 1600	± 2,424 SF – 8,900 SF
	Building 1300	± 3,000 SF – 13,000 SF

Nearby:



MEDARVA Healthcare, Drive Shack, Residence Inn by Marriott, Wawa, Audi Richmond, Cabela's, Wegman's, ALDI, Bon Secours Emergency Center, CareNow Urgent Care, Truist Bank, Short Pump Town Center, REI, Whole Foods, American Family Fitness, Commonwealth Primary Care, VCU Health, West End Facial Plastic Surgery, VA Physicians for Women, Goddard School, Virginia Eye Institute

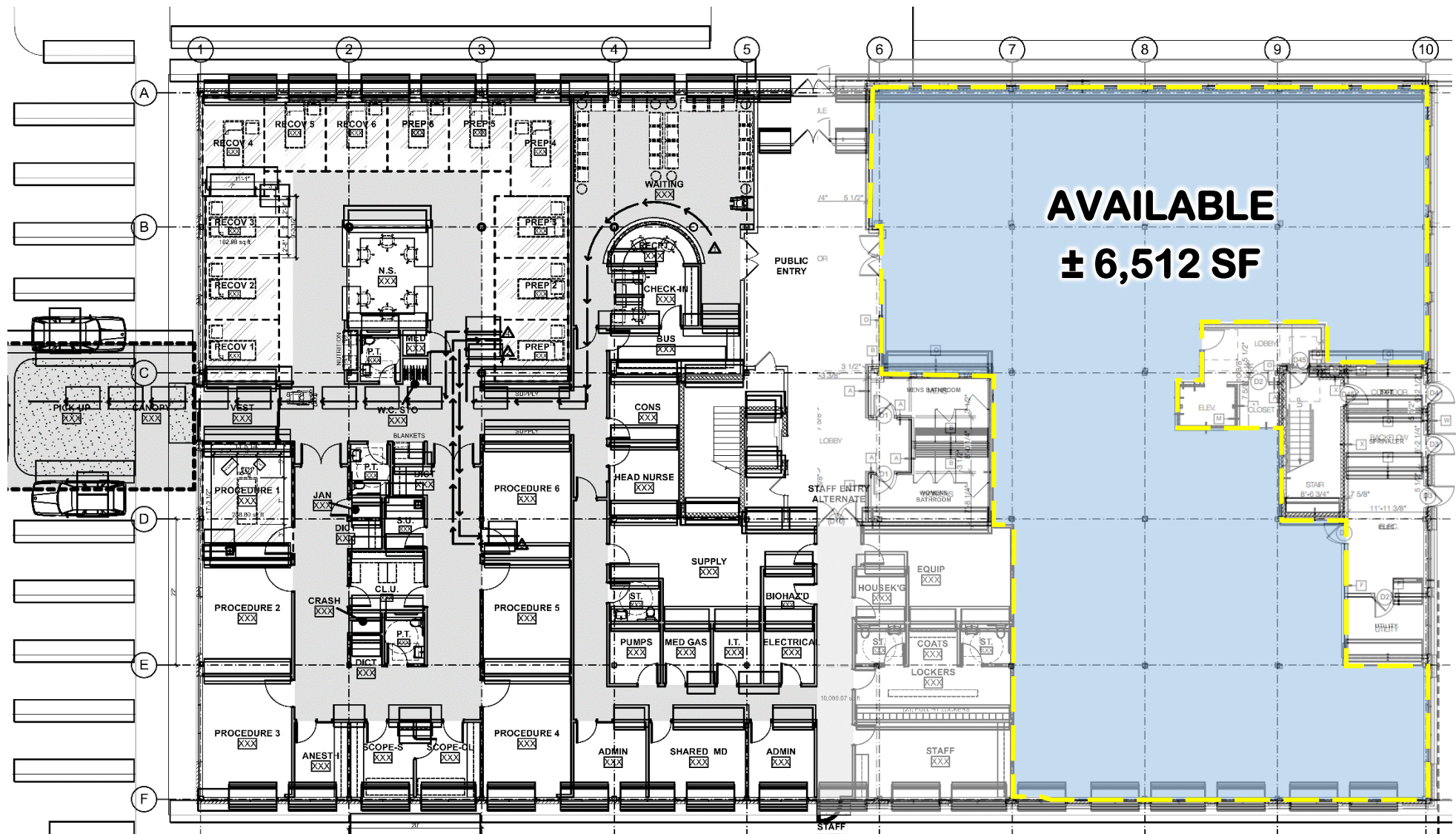


CONTACT

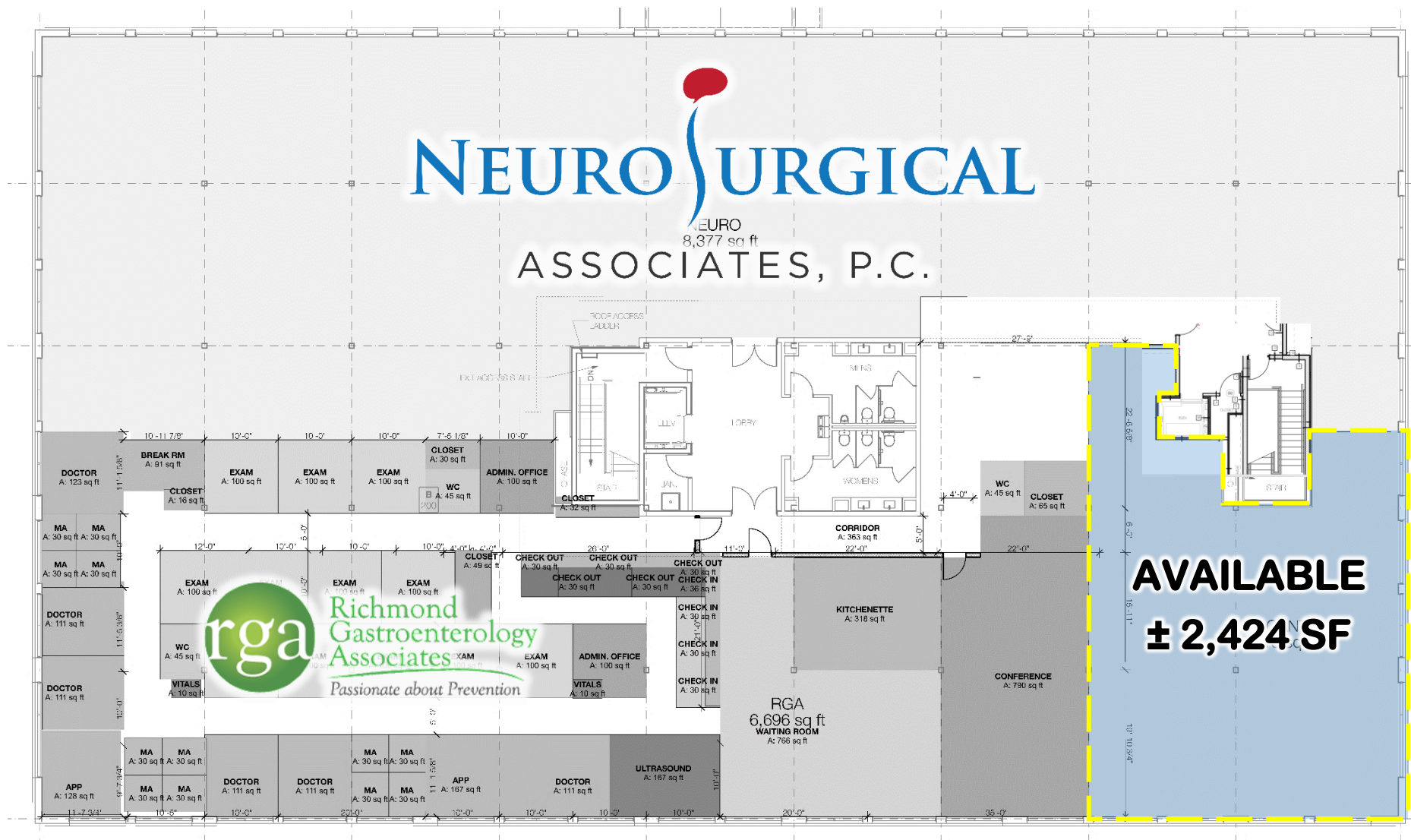
Sean Eichert, (804) 419-2295
seichert@realestateservicesco.com, realestateservicesco.com

Real Estate Services, Co.
13281 River's Bend Blvd, Suite 201, Chester, VA 23836

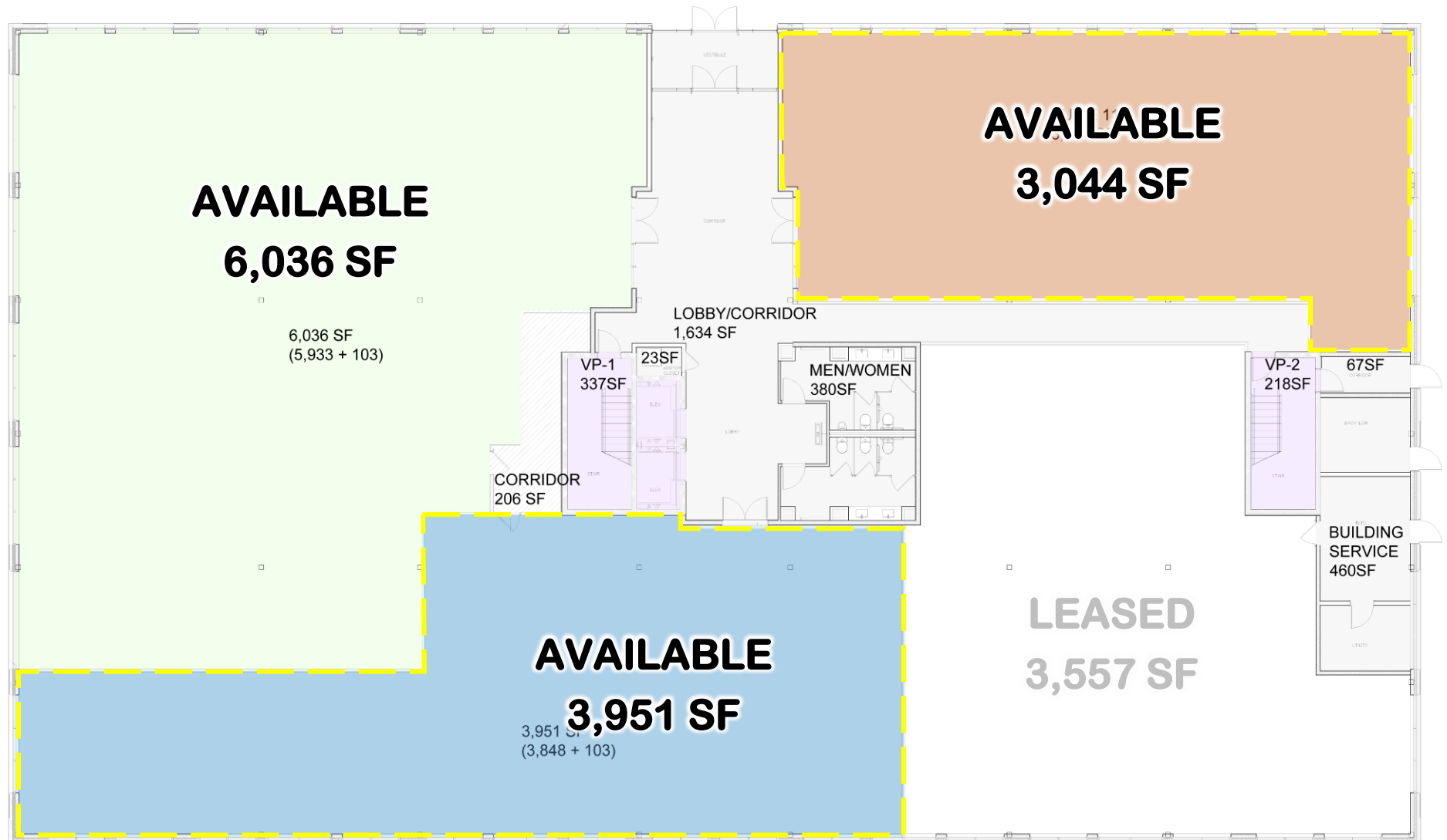
BUILDING 1600 – FIRST FLOOR



BUILDING 1600 – SECOND FLOOR



BUILDING 1300 – FIRST FLOOR



AERIAL

