

# 111 GREAT NECK ROAD

GREAT NECK, NEW YORK



## Office Space Available for Lease

Introducing "**The Towers**": Premier Class A Office Building.

Nestled in a prime location, "**The Towers**" presents an exemplary embodiment of sophisticated office environments. These distinguished offices, renowned for its architectural elegance, offers unparalleled amenities and strategic advantages for discerning professionals.

**Elegant Modernity:** Step into the realm of contemporary sophistication with "The Towers." A grandiose modern lobby greets visitors, setting the tone for an unparalleled professional experience. The meticulously designed interiors exude refinement and class, elevating the workplace ambiance to new heights of prestige.

**Convenient Accessibility:** Convenience is paramount at "The Towers." Situated in close proximity to the Long Island Rail Road (LIRR) station, a mere 20-minute commute to Manhattan, accessibility is unrivaled. With ample parking available on both ground and subterranean levels, commuting is streamlined for tenants and visitors alike. The building also offers a cafe on the first floor.



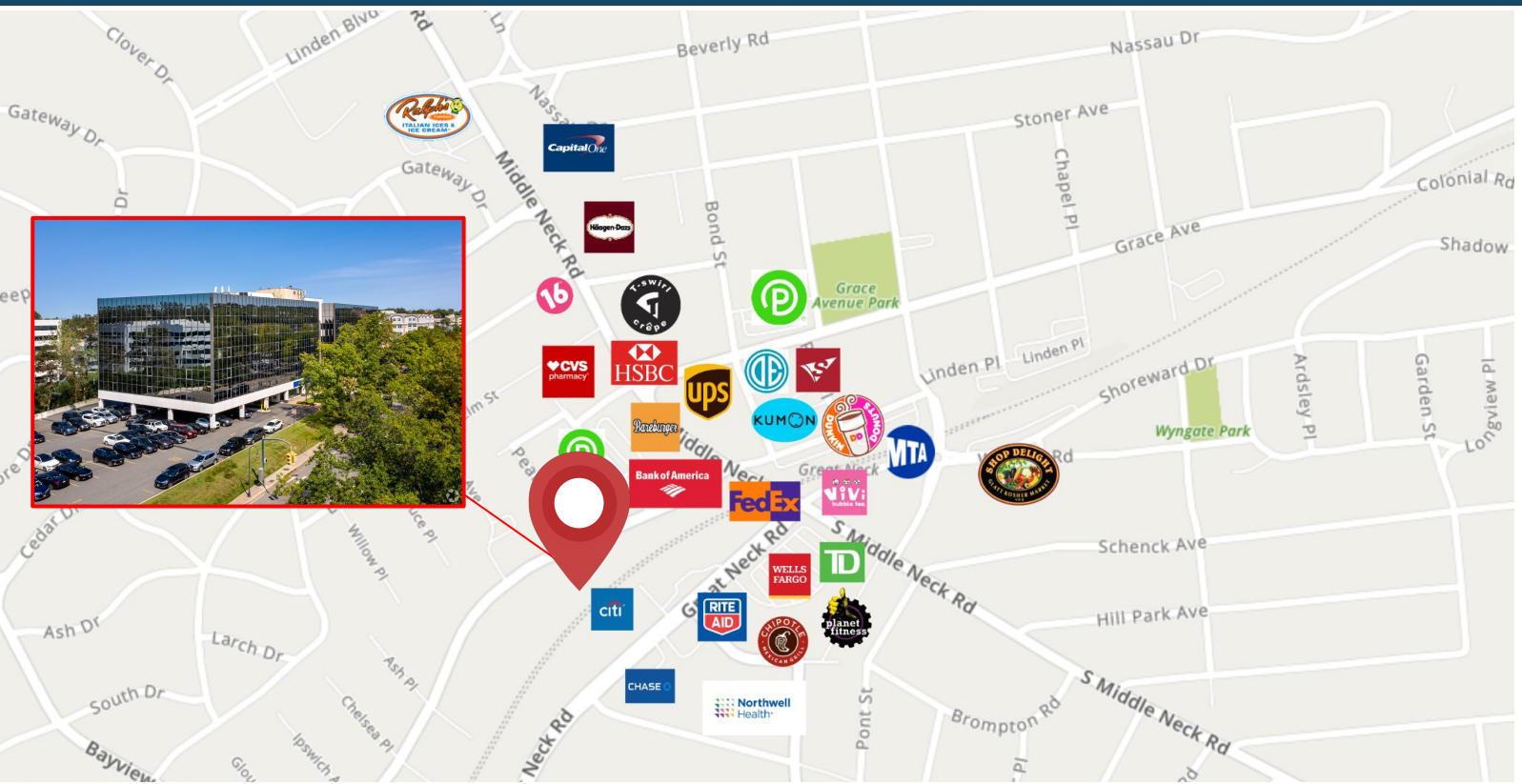
**ROZITA SOOMEKH**

Licensed Real Estate Broker

[Rozita.Soomekh@elliman.com](mailto:Rozita.Soomekh@elliman.com)

**516.344.7185**





OTHER NOTABLE BUSINESSES IN THE AREA



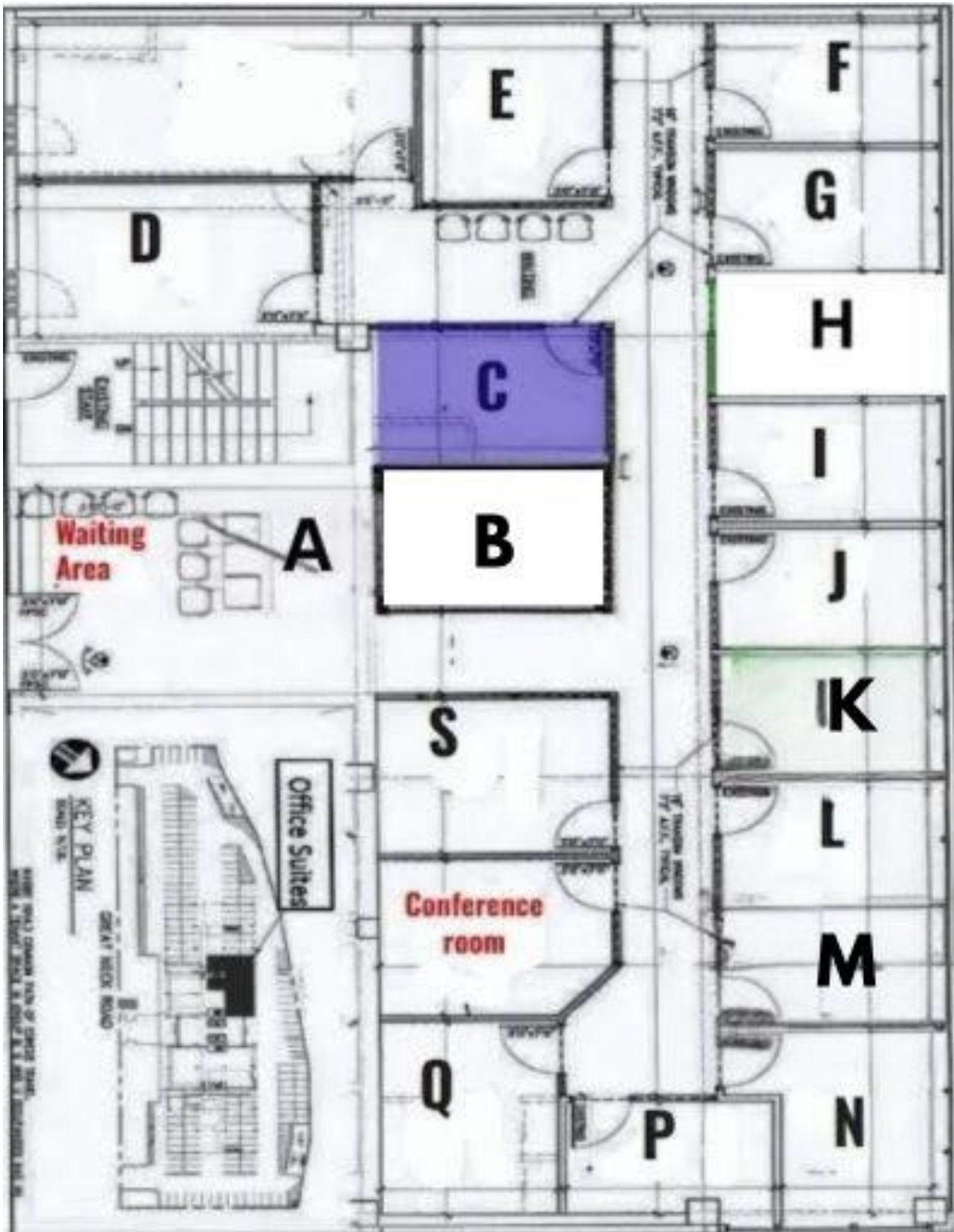
Available Units - All Utilities, Wifi & Parking  
Included (Per Month)  
**201-C \$ 850 (Sublease 8/31/27)**

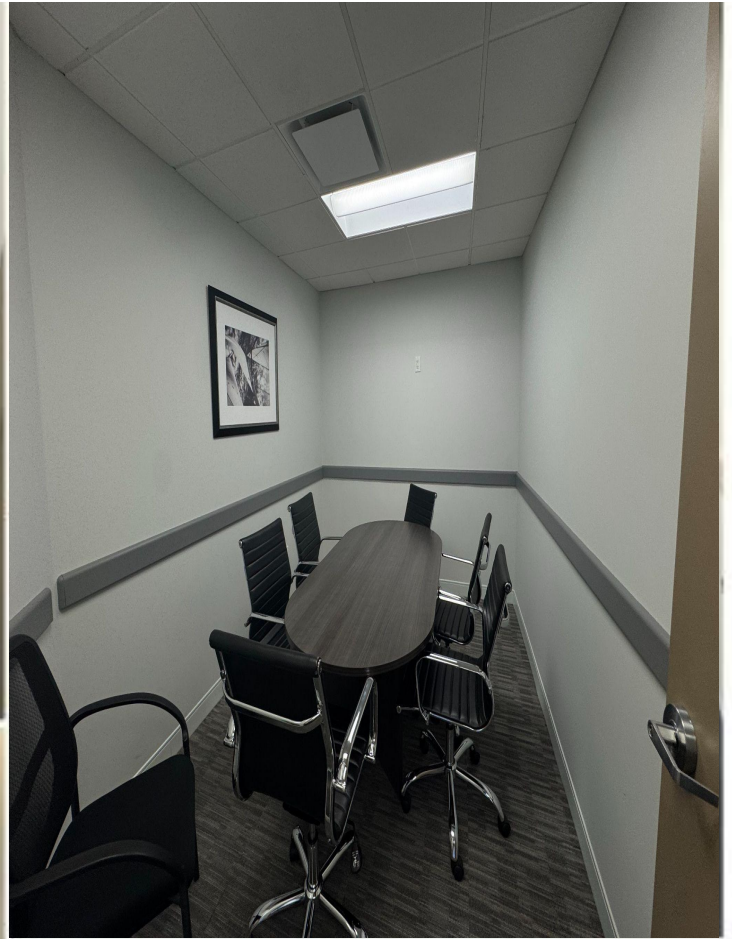
**THE ROZITA SOOMEKH TEAM**  
at Douglas Elliman  
Real Estate

**ROZITA SOOMEKH**  
Licensed Real Estate Broker  
[Rozita.Soomekh@elliman.com](mailto:Rozita.Soomekh@elliman.com)  
**516.344.7185**



# NEW Carpet, Lighting, Paint, and Furniture.





 **THE  
ROZITA  
SOOMEKH  
TEAM** at Douglas Elliman  
Real Estate

**ROZITA SOOMEKH**  
Licensed Real Estate Broker  
[Rozita.Soomekh@elliman.com](mailto:Rozita.Soomekh@elliman.com)  
**516.344.7185**



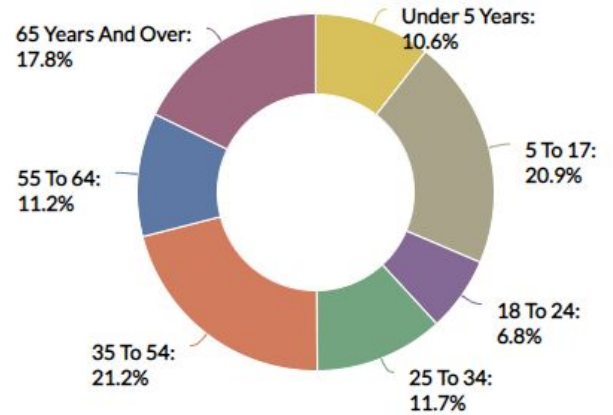
# GREAT NECK

NEW YORK



Great Neck is a region on Long Island, New York, that covers a peninsula on the North Shore and includes 9 villages, such as the villages of Great Neck, Great Neck Estates, Great Neck Plaza, Kings Point, and Russell Gardens, and a number of unincorporated areas, as well as an area south of the peninsula near Lake Success and the border territory of Queens.

## Age Demographic



TOTAL POPULATION

±11,000

## MEDIAN HOUSEHOLD INCOME



SCAN TO VIEW  
ALL OUR LISTINGS

