



FOR LEASE

TOTAL RETAIL PROJECT: 165,000 SF
 PHASE 1 - 17,000 SF

GROUND-UP MIXED-USE DEVELOPMENT

27651 Lincoln Place
 Santa Clarita, CA 91387

Developer:



VISTA CANYON

Primary Contacts:

Bert Abel
 Executive Vice President
 661.705.3554
 babel@naicapital.com
 Cal DRE Lic. #01206388

John Cserkuti
 Executive Vice President
 661.705.3551
 jcserkuti@naicapital.com
 Cal DRE Lic. #01267987



Population

1 Mile	3 Miles	5 Miles
15,953	71,098	113,026



Average Household Income

1 Mile	3 Miles	5 Miles
\$98,891	\$99,683	\$106,037



Daytime Population

1 Mile	3 Miles	5 Miles
2,302	12,772	24,201



No warranty, express or implied, is made as to the accuracy of the information contained herein. This information is submitted subject to errors, omissions, change of price, rental or other conditions, withdrawal without notice, and is subject to any special listing conditions imposed by our principals. Cooperating brokers, buyers, tenants and other parties who receive this document should not rely on it, but should use it as a starting point of analysis, and should independently confirm the accuracy of the information contained herein through a due diligence review of the books, records, files and documents that constitute reliable sources of the information described herein. Logos are for identification purposes only and may be trademarks of their respective companies. NAI Capital, Inc. Cal DRE Lic. #02130474.

25060 Avenue Stanford, Suite 165 | Valencia, California 91355
 661.705.3550 • naicapital.com

ABOUT JSB DEVELOPMENT



JSB Development is a real estate development group based in Valencia, California. For the last thirty years, the team has helped develop some of Santa Clarita's most successful commercial and residential projects.

The company's current focus is on Vista Canyon, a 185-acre transit-focused, mixed-use community encompassing 1,100 residential units, nearly 1 million square feet of commercial space, a new Metrolink station and more than 21 acres of recreational areas.

The Santa Clarita Valley is more than a real estate opportunity for the JSB team. It's home. That's why the team is committed to developing projects that bring new vitality to the region's people and businesses and help them enjoy the area's beautiful natural surroundings.

JSB Development is led by Jim Backer with 30+ years of commercial development experience, and Glenn Adamick, with 25+ years of experience in residential development.



VISTA CANYON

Bert Abel
Executive Vice President
661.705.3554
babel@naicapital.com
Cal DRE Lic. #01206388

John Cserkuti
Executive Vice President
661.705.3551
jcserkuti@naicapital.com
Cal DRE Lic. #01267987

Developer:



PROPERTY PHOTOS



VISTA CANYON

Bert Abel
Executive Vice President
661.705.3554
babel@naicapital.com
Cal DRE Lic. #01206388

John Cserkuti
Executive Vice President
661.705.3551
jcserkuti@naicapital.com
Cal DRE Lic. #01267987

Developer:

JSB
DEVELOPMENT

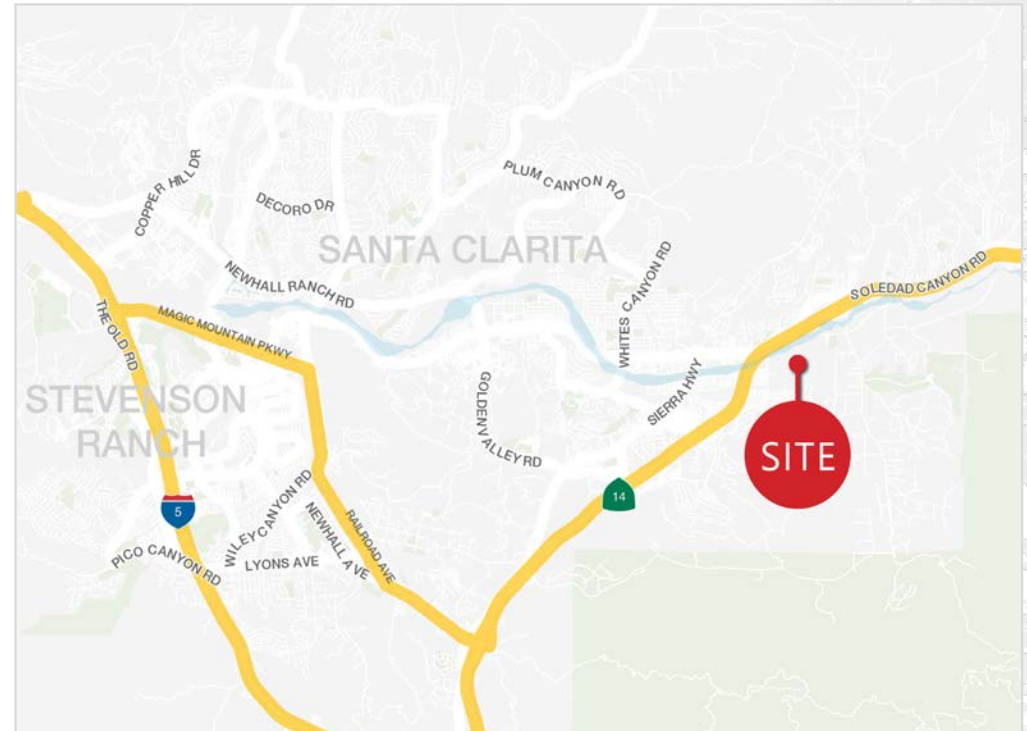
NAICapital
COMMERCIAL REAL ESTATE SERVICES. WORLDWIDE

PROPERTY HIGHLIGHTS & LOCATION



PROPERTY HIGHLIGHTS

- Vista Canyon is a 2,000,000 SF Master Planned Live/Work/ Pedestrian and Transit-Oriented Ground-Up Development Project; the First of its Kind
- Total Retail Project Will Include 165,000 SF of Retail
- Phase One is Comprised of 17,000SF of Ground Floor Retail and Ready to Deliver Space Now
- Available In-Line and End-Cap Units Ranging from 1,300-5,000 SF
- Ideal for Restaurant, Retail, Soft Goods, Medical and Service Oriented Users
- Building Fascia Signage Available
- Ample Parking
- Limited Retail Services in the Immediate Area Creating a Very Captive Audience



LOCATION HIGHLIGHTS

- 800 Single Family Homes, Apartments and Town Homes Currently Under Construction by JPI and KB Homes
- Metrolink and Bus Station Directly Adjacent to Site
- 10 Miles of Walking, Biking, and Equestrian Trails Surrounded by 75 Acres of Open Space
- Within the City of Santa Clarita Consistently ranked in the Top 10 Fastest Growing and Safest Cities in LA County

VISTA CANYON

Bert Abel
Executive Vice President
661.705.3554
babel@naicapital.com
Cal DRE Lic. #01206388

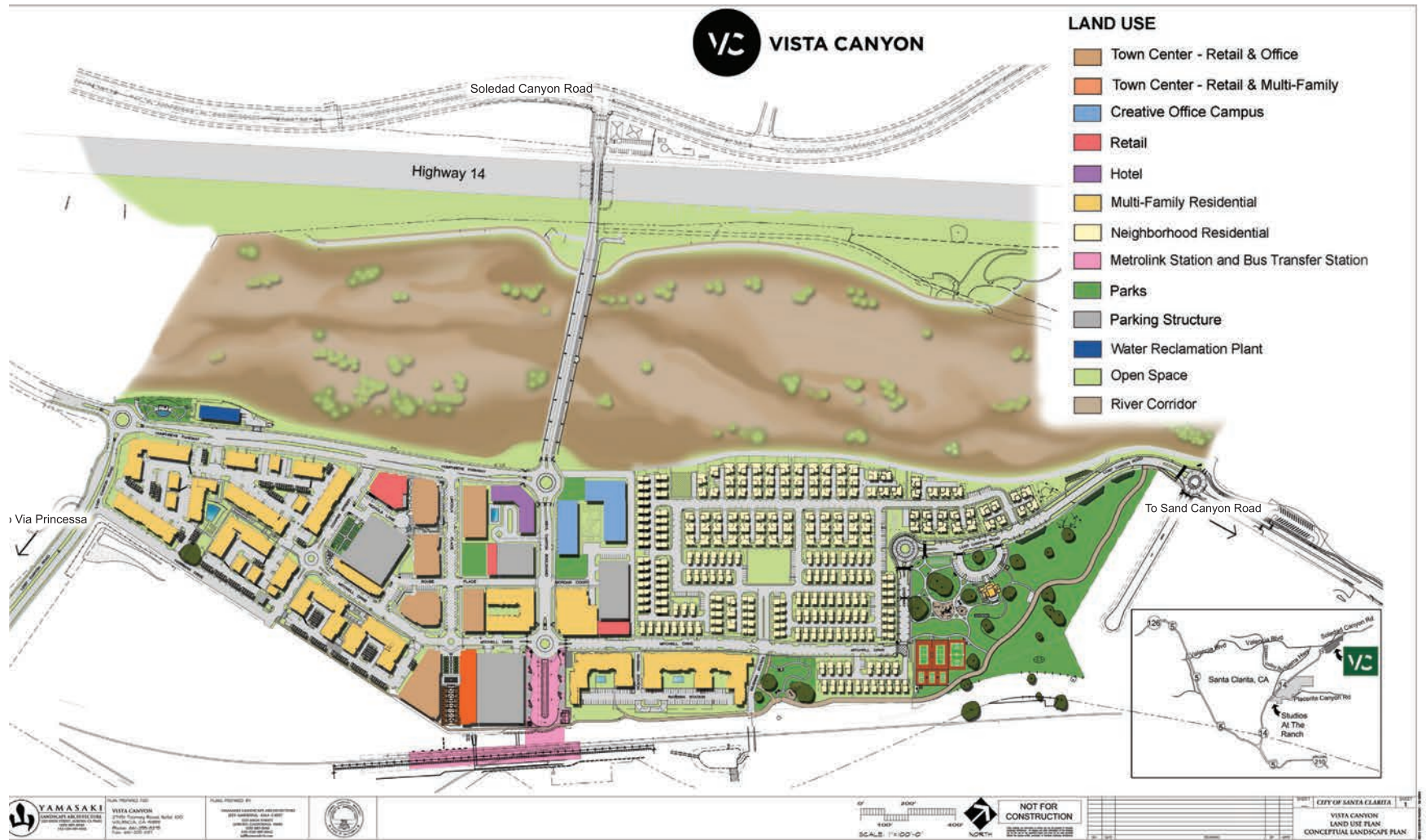
John Cserkuti
Executive Vice President
661.705.3551
jcserkuti@naicapital.com
Cal DRE Lic. #01267987

Developer:

JSB
DEVELOPMENT

NAICapital
COMMERCIAL REAL ESTATE SERVICES. WORLDWIDE

SITE PLAN



VISTA CANYON

Bert Abel
Executive Vice President
661.705.3554
babel@naicapital.com
Cal DRE Lic. #01206388

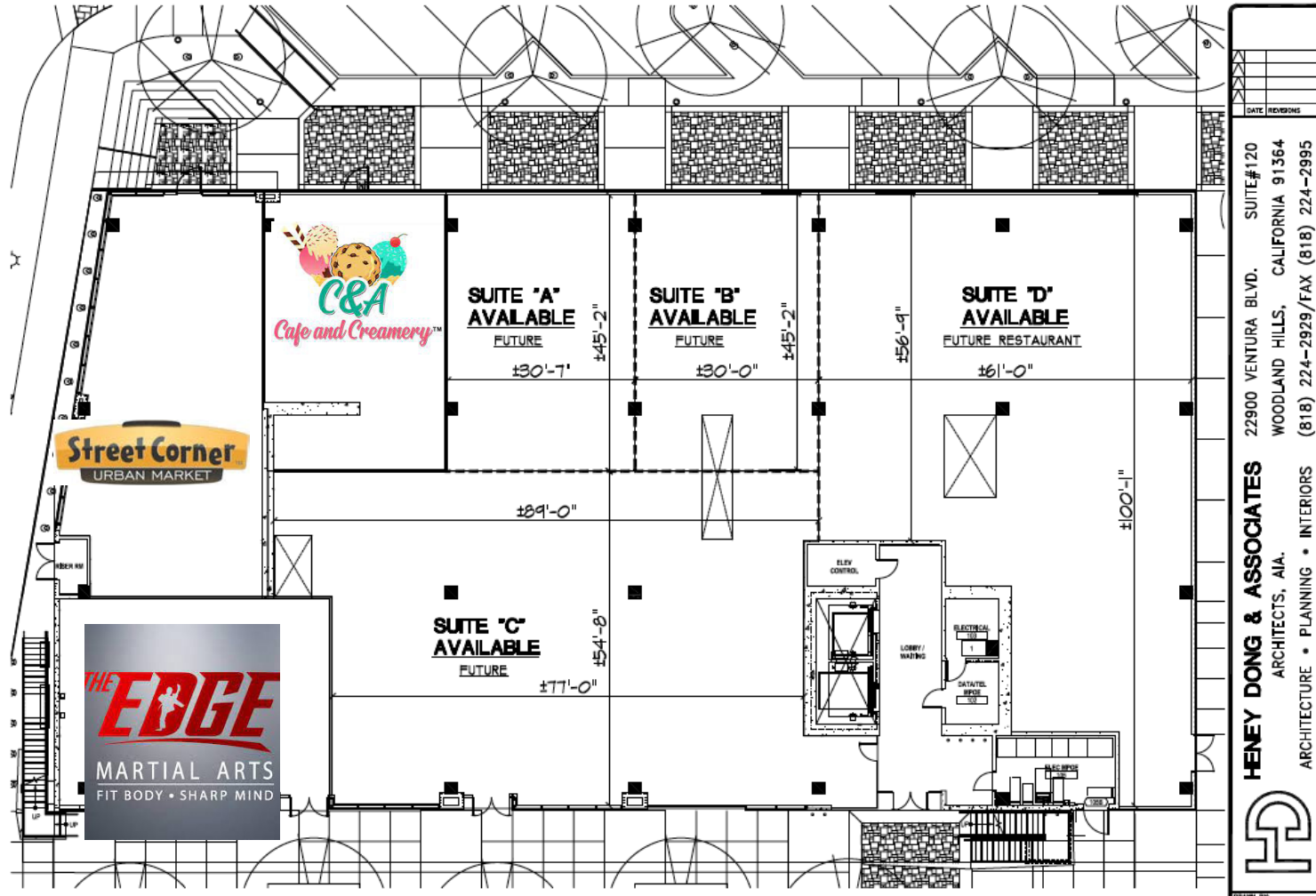
John Cserkuti
Executive Vice President
661.705.3551
jcserkuti@naicapital.com
Cal DRE Lic. #01267987

Developer:

JSB
DEVELOPMENT

NAICapital
COMMERCIAL REAL ESTATE SERVICES. WORLDWIDE

FLOOR PLAN



VISTA CANYON

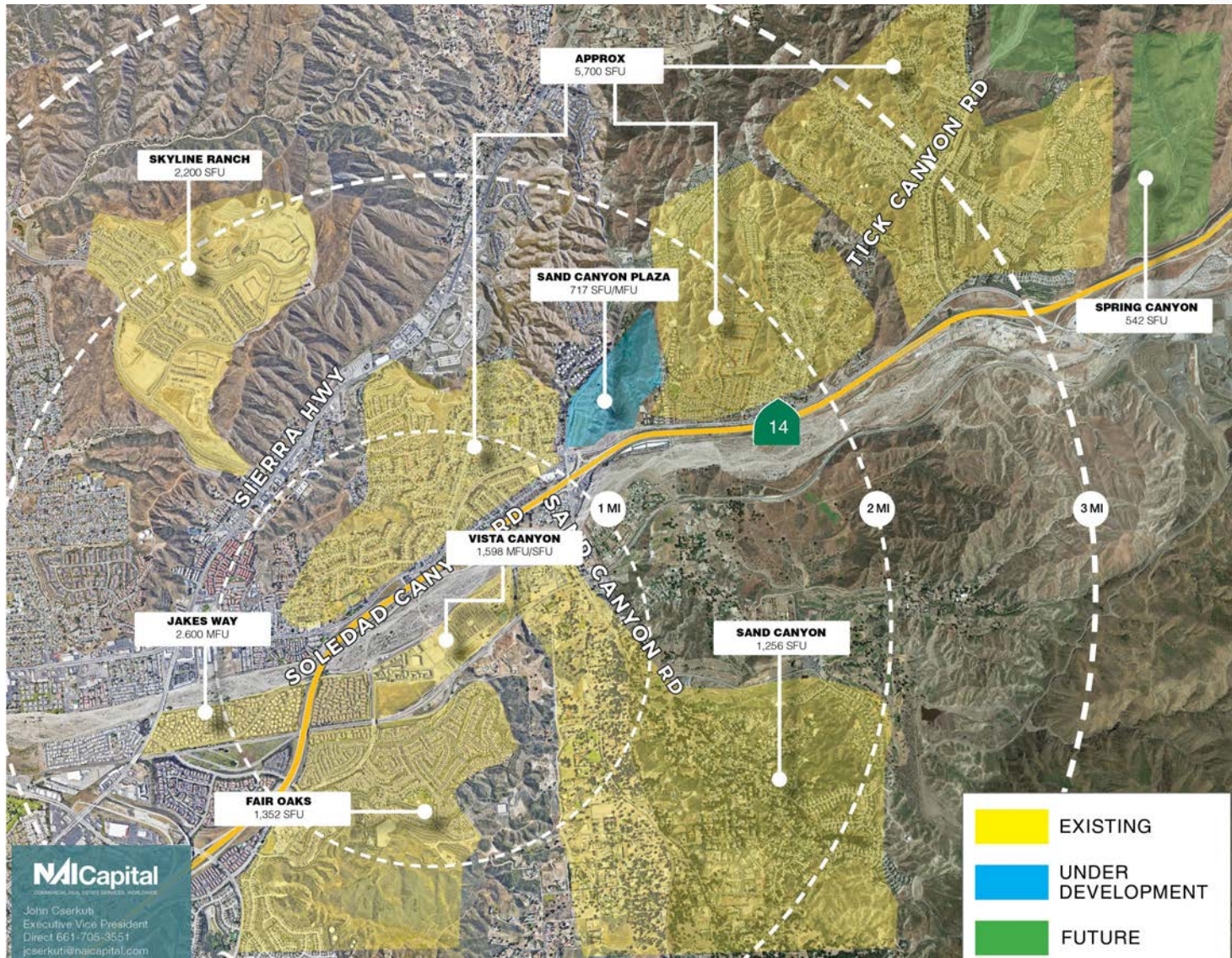
Bert Abel
 Executive Vice President
 661.705.3554
 babel@naicapital.com
 Cal DRE Lic. #01206388

John Cserkuti
 Executive Vice President
 661.705.3551
 jcserkuti@naicapital.com
 Cal DRE Lic. #01267987

Developer:



RESIDENTIAL MAP



VISTA CANYON

NAI Capital

John Cserkuti
Executive Vice President
Direct 661-705-3551
jcserkuti@naicapital.com

Bert Abel
Executive Vice President
661.705.3554
babel@naicapital.com
Cal DRE Lic. #01206388

John Cserkuti
Executive Vice President
661.705.3551
jcserkuti@naicapital.com
Cal DRE Lic. #01267987

Developer:

JSB
DEVELOPMENT

NAI Capital
COMMERCIAL REAL ESTATE SERVICES. WORLDWIDE

SCV OVERVIEW



VISTA CANYON

Bert Abel
 Executive Vice President
 661.705.3554
 babel@naicapital.com
 Cal DRE Lic. #01206388

John Cserkuti
 Executive Vice President
 661.705.3551
 jcserkuti@naicapital.com
 Cal DRE Lic. #01267987

Developer:

JSB
 DEVELOPMENT

NAI Capital
 COMMERCIAL REAL ESTATE SERVICES. WORLDWIDE



VISTA CANYON

27651 LINCOLN PLACE
SANTA CLARITA, CA 91387

No warranty, express or implied, is made as to the accuracy of the information contained herein. This information is submitted subject to errors, omissions, change of price, rental or other conditions, withdrawal without notice, and is subject to any special listing conditions imposed by our principals. Cooperating brokers, buyers, tenants and other parties who receive this document should not rely on it, but should use it as a starting point of analysis, and should independently confirm the accuracy of the information contained herein through a due diligence review of the books, records, files and documents that constitute reliable sources of the information described herein. Logos are for identification purposes only and may be trademarks of their respective companies. NAI Capital, Inc. Cal DRE Lic. #02130474.

Bert Abel
Executive Vice President
661.705.3554
babel@naicapital.com
Cal DRE Lic. #01206388

John Cserkuti
Executive Vice President
661.705.3551
jcserkuti@naicapital.com
Cal DRE Lic. #01267987

NAI Capital
25060 Avenue Stanford, Suite 165
Valencia, California 91355
661.705.3550
www.naicapital.com

NAI Capital
COMMERCIAL REAL ESTATE SERVICES, WORLDWIDE