



## 4 Walter E Foran Blvd

Flemington, New Jersey

### Property Features

- ±1,080 SF Second Floor Office Space
- Open Floor Plan
- Medical Use Permitted
- Ideal for Architects, Engineers, Accountants, IT, Attorneys, Advertising
- Great location off of Route 31 and close proximity to Route 202

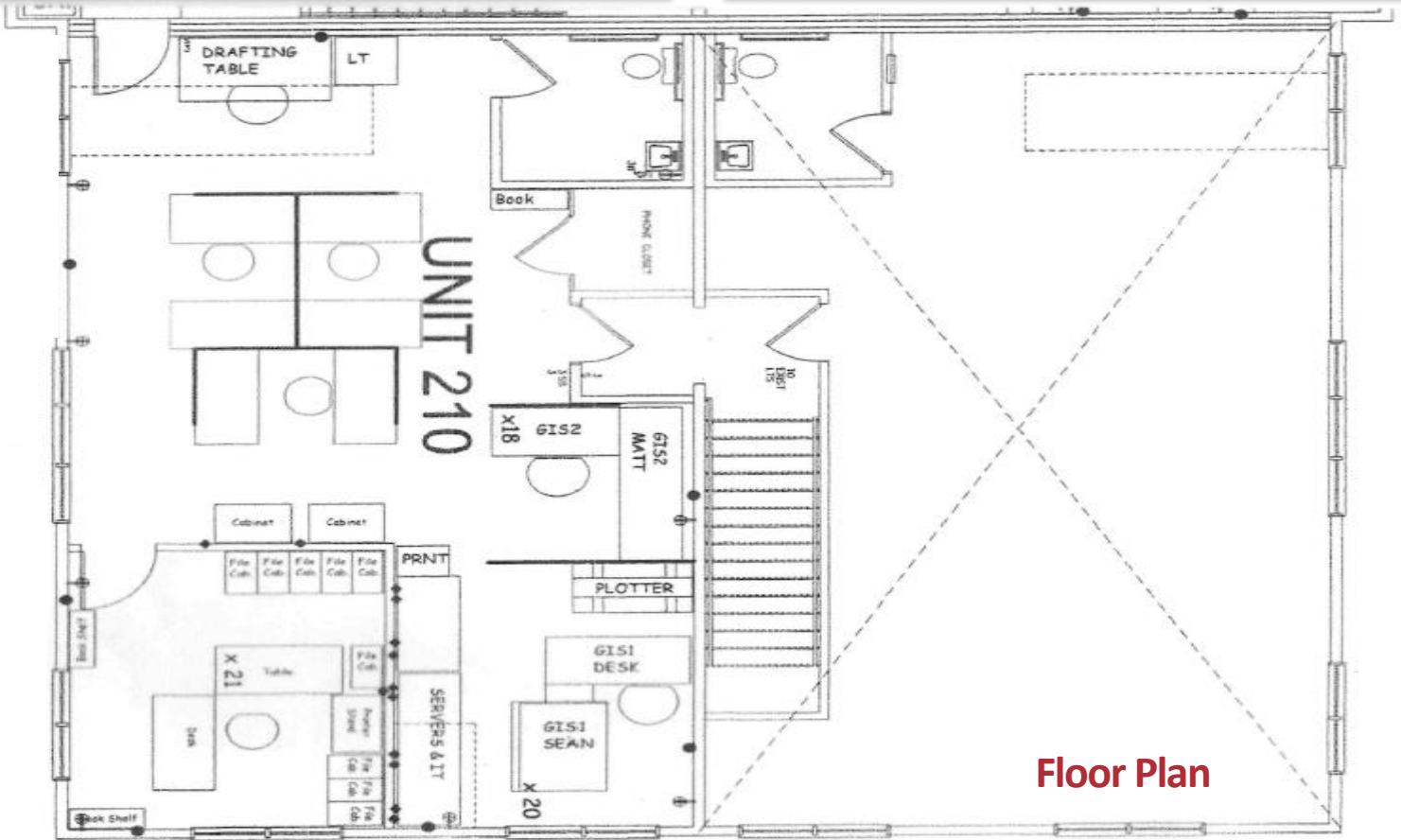


For further information  
please contact Exclusive Broker:

**Marc Shein**  
Senior Vice President  
732 985 3000 ext. 212  
mshein@naidb.com

For Sale or Lease  
±1,080 SF

### Interior Photos



Floor Plan

**NAI DiLeo-Bram & Co.**

Commercial Real Estate Services, Worldwide.

90 Woodbridge Center Drive, Suite 160  
Woodbridge, NJ 07095  
732 985 3000 | [naidb.com](http://naidb.com)

For further information  
please contact Exclusive Broker:

**Marc Shein**  
Senior Vice President  
732 985 3000 ext. 212  
[mshein@naidb.com](mailto:mshein@naidb.com)