

Industrial Space for Lease

CBRE



**6593 Powers Avenue, Building 3
Jacksonville, FL 32217**

Please Contact:

Kyle Fisher
Kyle Murphy
Alliah Hardee
+1 845 416 3890
kyle.murphy@cbre.com

Suite 24: Key Features

Premises Size3,500 SF

Warehouse Space2,000

Office1,500 SF

Warehouse LightingLED Lighting

Loading1 Dock High Door

Clear Height18'


Parking Ratio2.3/1,000 SF

Truck Court75'

ZoningIL (Light Industrial)







TOTAL SF

3,500 SF




LOADING

1 DOCK-HIGH DOOR



2.3/1,000 SF

PARKING RATIO



OFFICE SF

1,500 SF



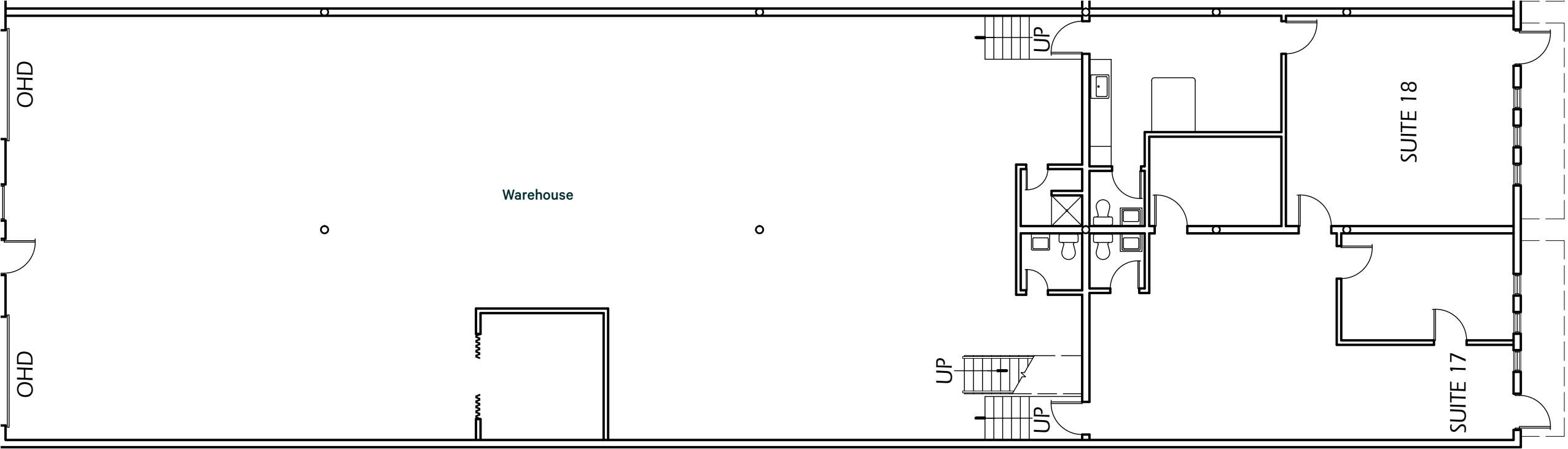
18.0'


CLEAR HEIGHT



LED

WAREHOUSE LIGHTING






TOTAL SF
5,600 SF



LOADING
2 DOCK-HIGH DOORS



2.3/1,000 SF
PARKING RATIO



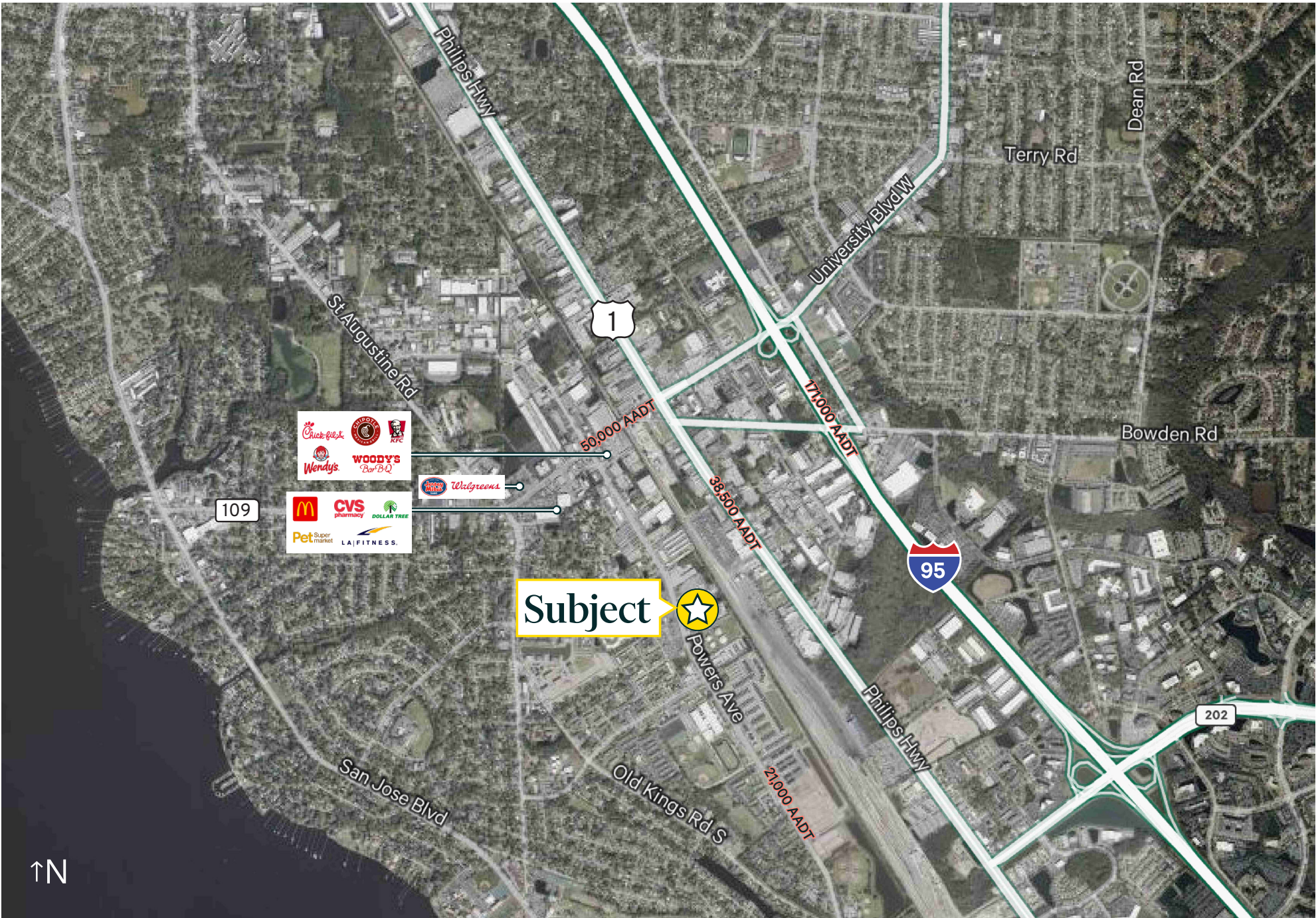
OFFICE SF
2,000 SF

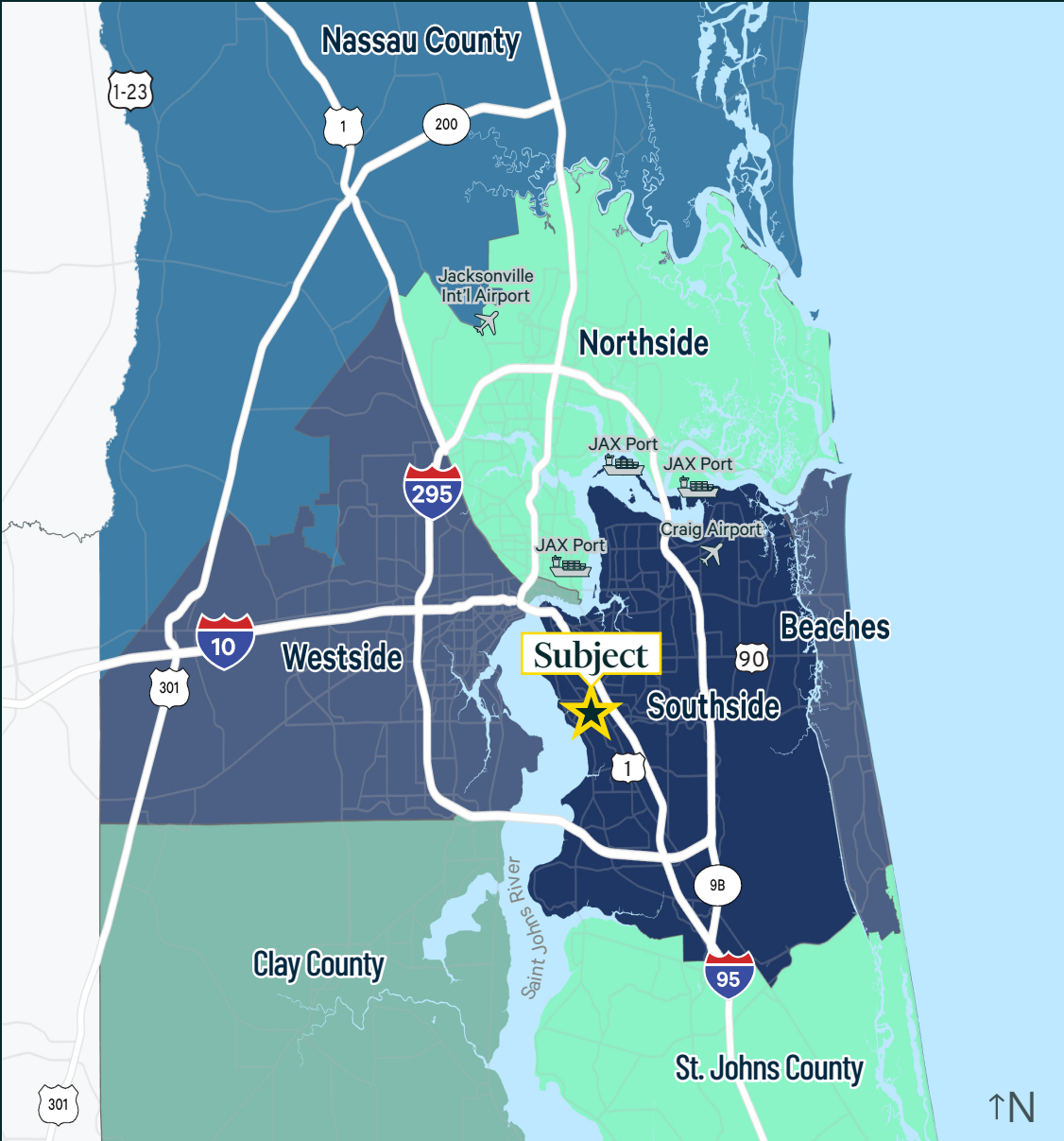


18.0'
CLEAR HEIGHT



LED
WAREHOUSE LIGHTING





Points of Interest	Distance
US-1	1.3 miles
Interstate 95	1.5 miles
FEC Intermodal Facility	1.7 miles
US-10	8 miles
Interstate 295	9 miles
JAXPORT Talleyrand	10.3 miles
Norfolk Southern Intermodal Facility	15 miles
JAXPORT Dames Point	15.8 miles
JAXPORT Blount Island	15.8 miles
CSX Intermodal Facility	18.6 miles
Jacksonville Int'l Airport	21 miles
Port of Savannah	149 miles
Port of Tampa	206 miles
Port of Charleston	246 miles

Please Contact:

Kyle Fisher
Kyle Murphy
Alliah Hardee
+1 845 416 3890
kyle.murphy@cbre.com

© 2026 CBRE, Inc. All rights reserved. This information has been obtained from sources believed reliable, but has not been verified for accuracy or completeness. You should conduct a careful, independent investigation of the property and verify all information. Any reliance on this information is solely at your own risk. CBRE and the CBRE logo are service marks of CBRE, Inc. All other marks displayed on this document are the property of their respective owners, and the use of such logos does not imply any affiliation with or endorsement of CBRE. Photos herein are the property of their respective owners. Use of these images without the express written consent of the owner is prohibited.