

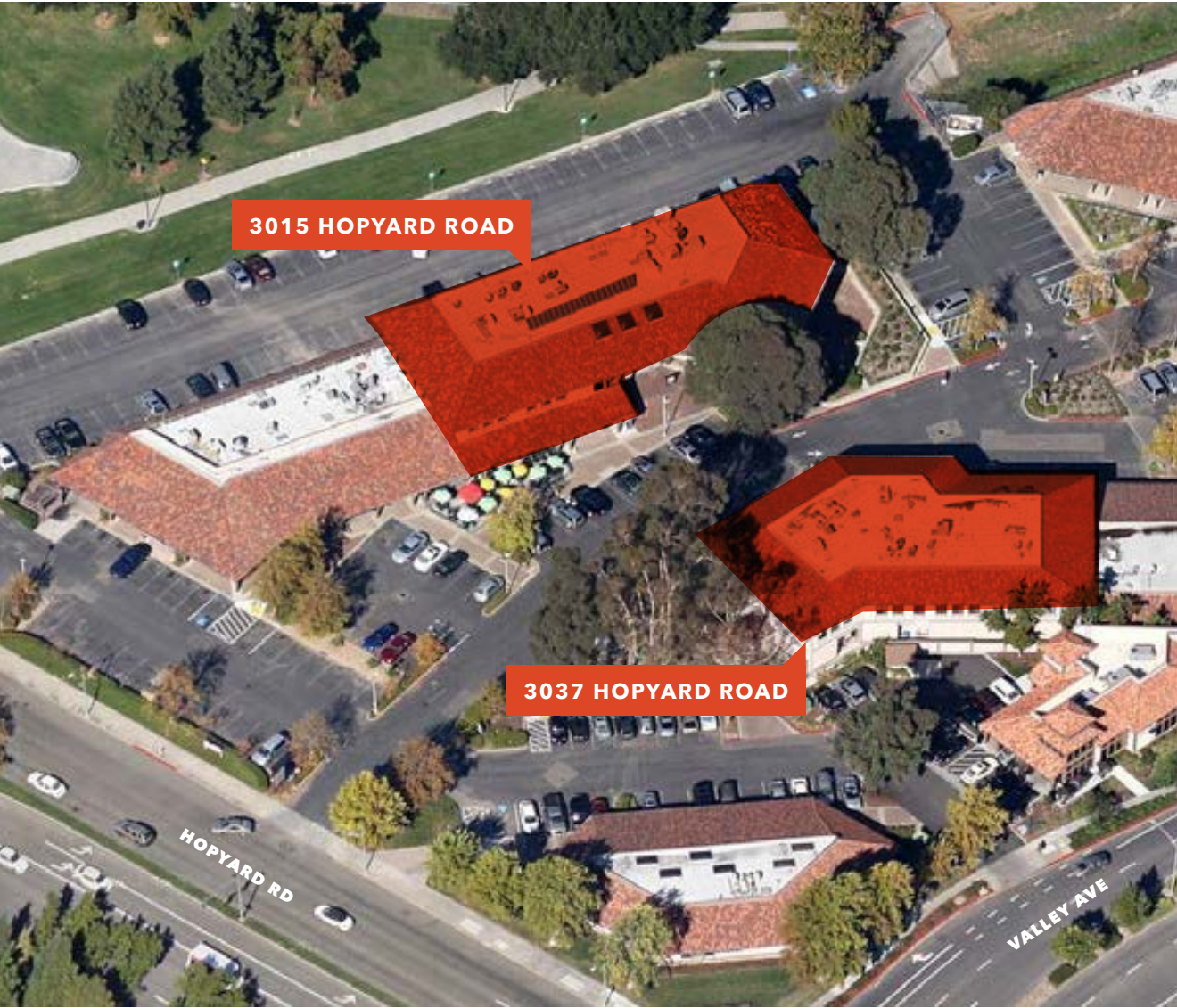


HOPYARD VILLAGE OFFICE SUITES

FOR LEASE

Hopyard Village Office Suites

3015 HOPYARD ROAD, PLEASANTON, CA



Property Highlights

LOCATED at busy intersection of Hopyard Road and Valley Ave

STEPS to Peet's Coffee and many restaurant options

AMPLE Parking

ASKING \$2.00 PSF, Full Service

AVAILABLE SUITES

	Square Footage
3015 Hopyard Road, Suite T	±455 SF
3015 Hopyard Road, Suite P	±745 SF
3015 Hopyard Road, Suite N	±815 SF
3015 Hopyard Road, Suite R	±1,262 SF
3015 Hopyard Road, Suite Q	±1,701 SF
3037 Hopyard Road, Suite S	±690 SF

JASON CHANDLER
925.905.1103
jason.chandler@kidder.com
LIC N° 01394441

SIMON VOGT, SIOR
925.905.1112
simon.vogt@kidder.com
LIC N° 01879314

KIDDER.COM

This information supplied herein is from sources we deem reliable. It is provided without any representation, warranty, or guarantee, expressed or implied as to its accuracy. Prospective Buyer or Tenant should conduct an independent investigation and verification of all matters deemed to be material, including, but not limited to, statements of income and expenses. Consult your attorney, accountant, or other professional advisor.



FOR LEASE

Hopyard Village Office Suites

3015 HOPYARD ROAD, PLEASANTON, CA



KIDDER.COM

This information supplied herein is from sources we deem reliable. It is provided without any representation, warranty, or guarantee, expressed or implied as to its accuracy. Prospective Buyer or Tenant should conduct an independent investigation and verification of all matters deemed to be material, including, but not limited to, statements of income and expenses. Consult your attorney, accountant, or other professional advisor.

km Kidder Mathews