

23701-23711 JOHN R. ROAD
HAZEL PARK, MICHIGAN

INDUSTRIAL FOR LEASE
5,250 Square Feet Available



**SIGNATURE
ASSOCIATES**
KNOW SIGNATURE | KNOW RESULTS

EXCELLENT ACCESS TO I-75 & I-696



PROPERTY FEATURES

- 5,250 square feet available
- 4,750 square feet of office
- 10' clear height
- (1) 10' x 10' grade level door
- Open engineering space with two private offices and two conference rooms
- Main road exposure with excellent access to I-75 & I-696 interchange
- Bathroom with shower
- Parking includes side street, alley, and road parking in front of the building
- Awning on the side of the building and a 200 amp plug which the former tenant used to power a mobile vehicle
- Lease Rate: \$11.00/sq. ft. NNN



For more information, please contact:

KRIS PAWLOWSKI
(248) 359 3801
kpawlowski@signatureassociates.com

SIGNATURE ASSOCIATES
One Towne Square, Suite 1200
Southfield, MI 48076
www.signatureassociates.com

23701 - 23711 John R. Road – Hazel Park, Michigan

Industrial For Lease

5,250
Square Feet
AVAILABLE

Interior Photos



For more information, please contact:

KRIS PAWLOWSKI
(248) 359 3801
kpawlowski@signatureassociates.com

SIGNATURE ASSOCIATES
One Towne Square, Suite 1200
Southfield, MI 48076
www.signatureassociates.com

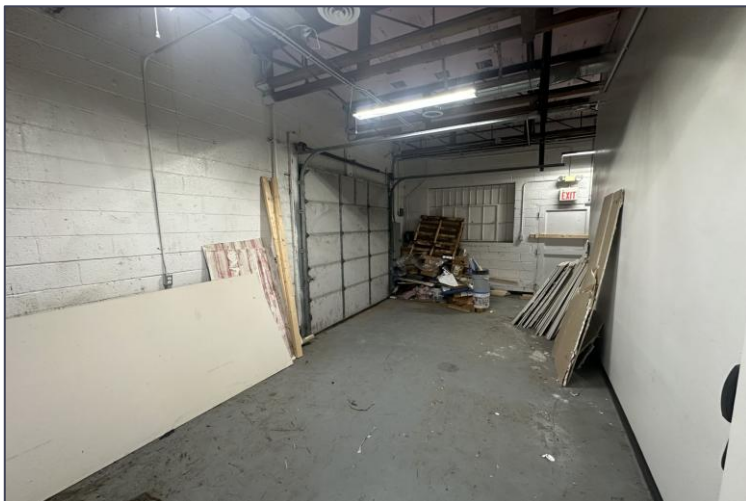
Information is subject to verification and no liability for errors or omissions is assumed. Price is subject to change and listing withdrawal.

23701 - 23711 John R. Road – Hazel Park, Michigan

Industrial For Lease

5,250
Square Feet
AVAILABLE

Interior Photos



For more information, please contact:

KRIS PAWLOWSKI
(248) 359 3801
kpawlowski@signatureassociates.com

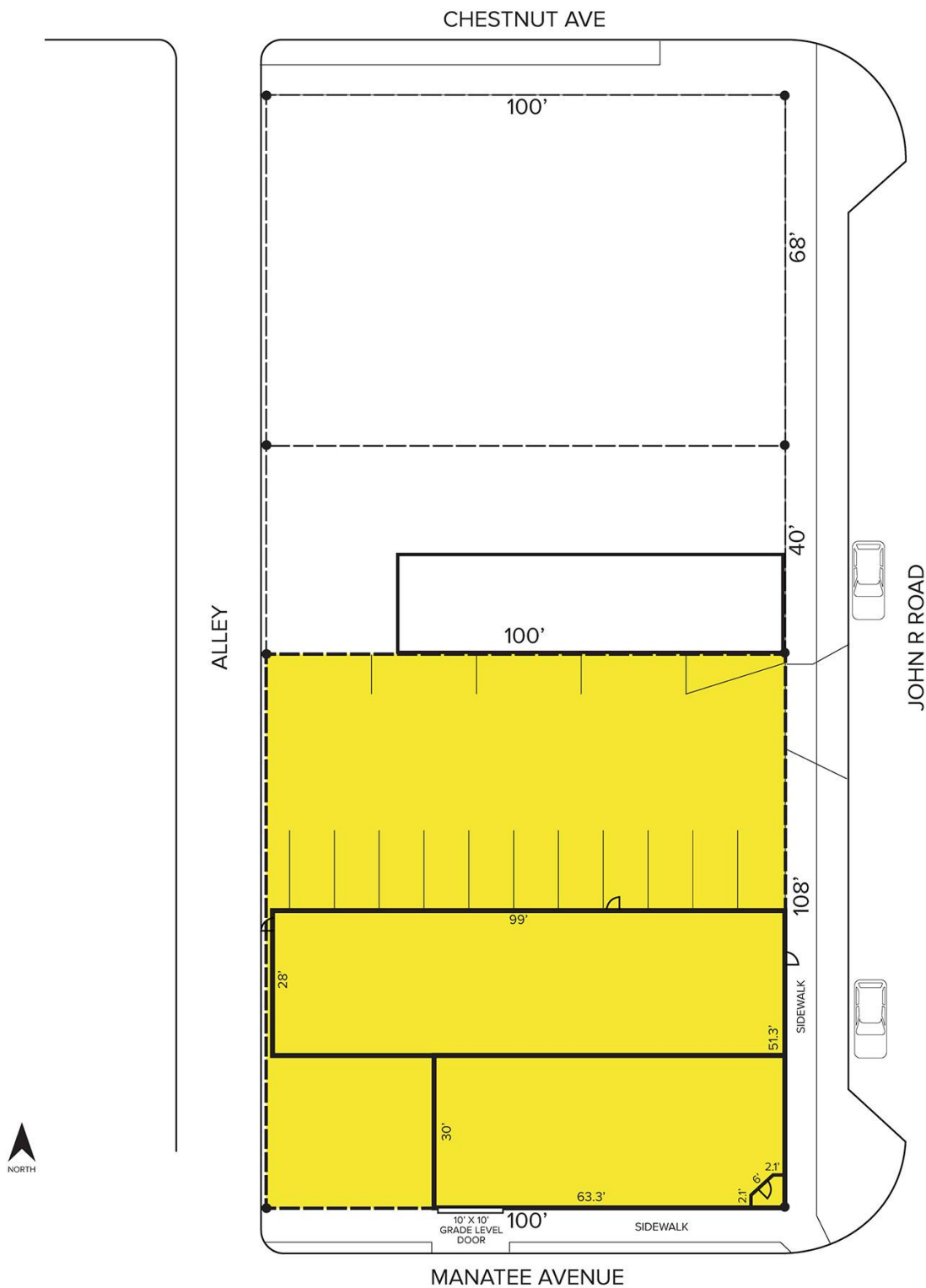
SIGNATURE ASSOCIATES
One Towne Square, Suite 1200
Southfield, MI 48076
www.signatureassociates.com

Information is subject to verification and no liability for errors or omissions is assumed. Price is subject to change and listing withdrawal.

23701 - 23711 John R. Road – Hazel Park, Michigan
Industrial For Lease

5,250
Square Feet
AVAILABLE

Site Plan



For more information, please contact:
KRIS PAWLOWSKI
(248) 359 3801
kpawlowski@signatureassociates.com

SIGNATURE ASSOCIATES
One Towne Square, Suite 1200
Southfield, MI 48076
www.signatureassociates.com

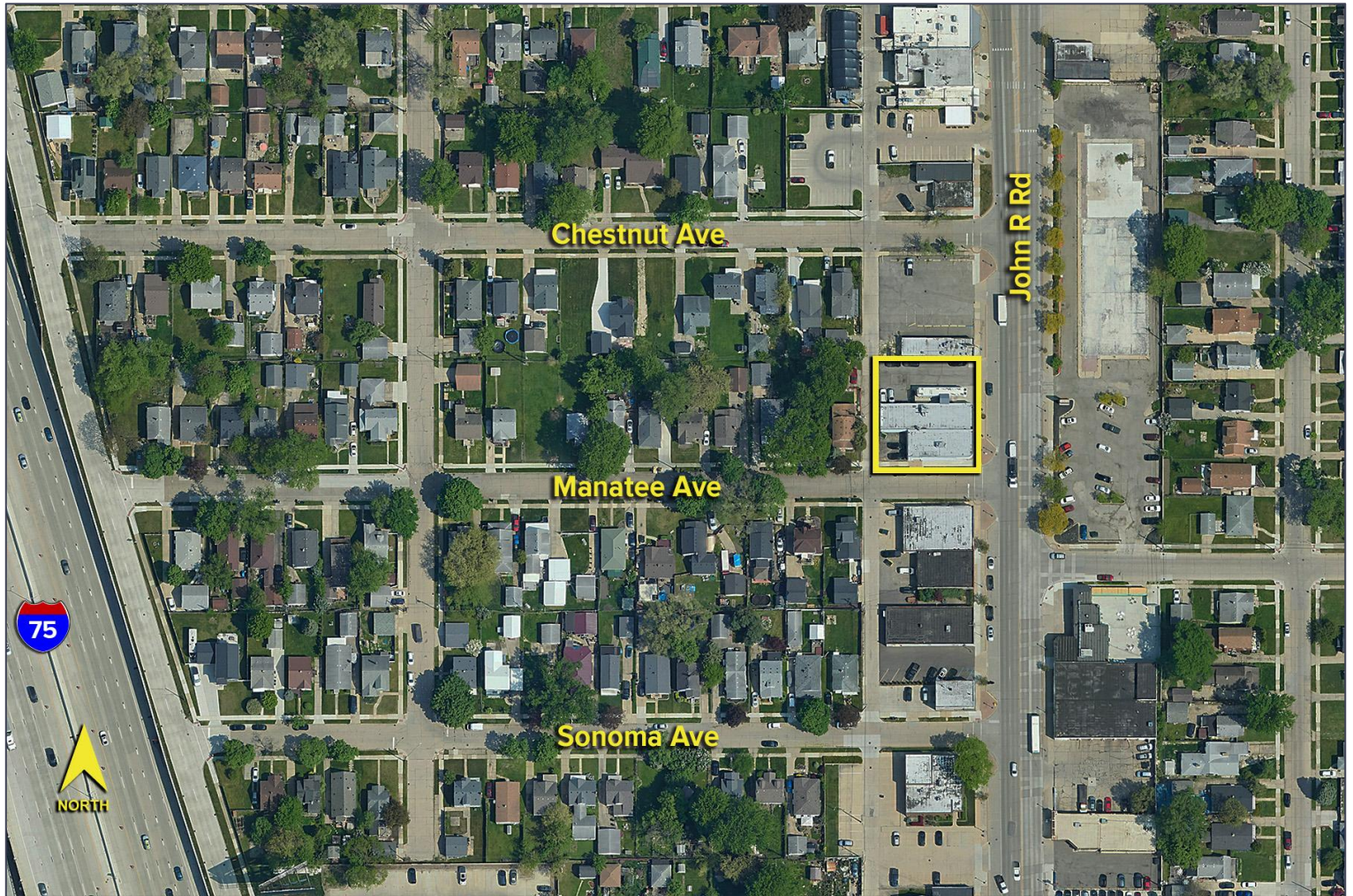
Information is subject to verification and no liability for errors or omissions is assumed. Price is subject to change and listing withdrawal.

23701 - 23711 John R. Road – Hazel Park, Michigan

Industrial For Lease

5,250
Square Feet
AVAILABLE

Aerial



For more information, please contact:

KRIS PAWLOWSKI
(248) 359 3801
kpawlowski@signatureassociates.com

SIGNATURE ASSOCIATES
One Towne Square, Suite 1200
Southfield, MI 48076
www.signatureassociates.com

Information is subject to verification and no liability for errors or omissions is assumed. Price is subject to change and listing withdrawal.