

# For Lease

1,250 SF | \$22.00 SF/yr  
Office Space



## 315 11th Ave N

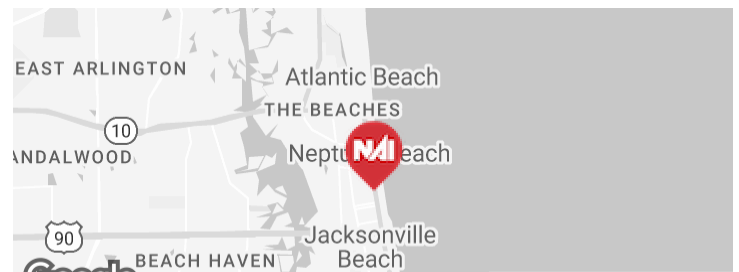
Jacksonville Beach, Florida 32250

### Property Highlights

- Contemporary design
- Flexible floor plan
- High visibility
- Easy access to major roadways

### Property Overview

Discover the vibrant neighborhood surrounding the property at 315 11th Ave N, Jacksonville Beach, FL, 32250. This area offers a dynamic blend of convenience and leisure, with trendy cafes, local boutiques, and a friendly community ambience. Enjoy easy access to the beautiful Jacksonville Beach, just a short walk away, as well as nearby fitness centers, dining options, and entertainment venues. With its desirable proximity to major roadways and the lively atmosphere of the Jacksonville Beach area, this location provides a prime setting for a professional business to thrive amidst the best of Jacksonville's coastal charm and energetic community environment.



Spaces	Lease Rate	Space Size
AVAILABLE	\$22.00 SF/yr	1,250 SF

### For More Information



#### Sydney Miles

Associate  
O: 904 404 5566 | C: 502 939 2900  
sm@naihallmark.com

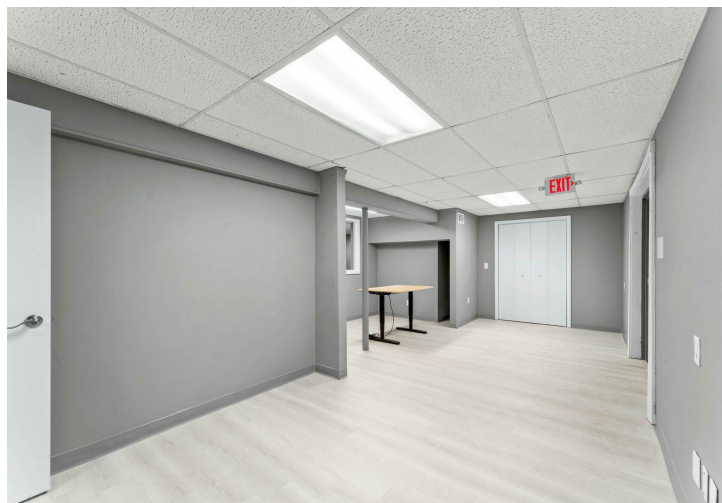
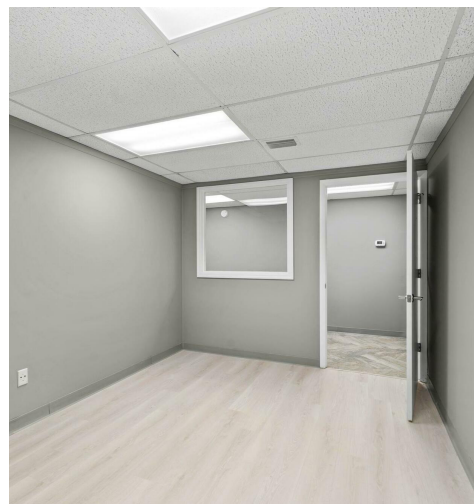
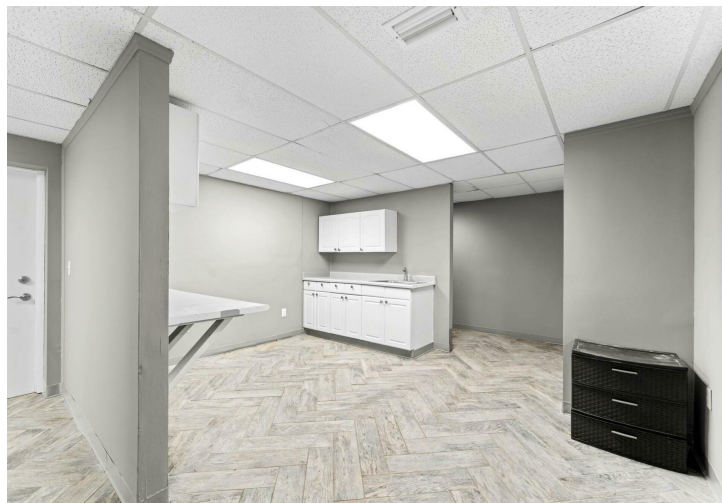


#### Patrick Carney

Vice President, Office Specialist  
O: 904 404 4456 | C: 904 588 2508  
pc@naihallmark.com

For Lease

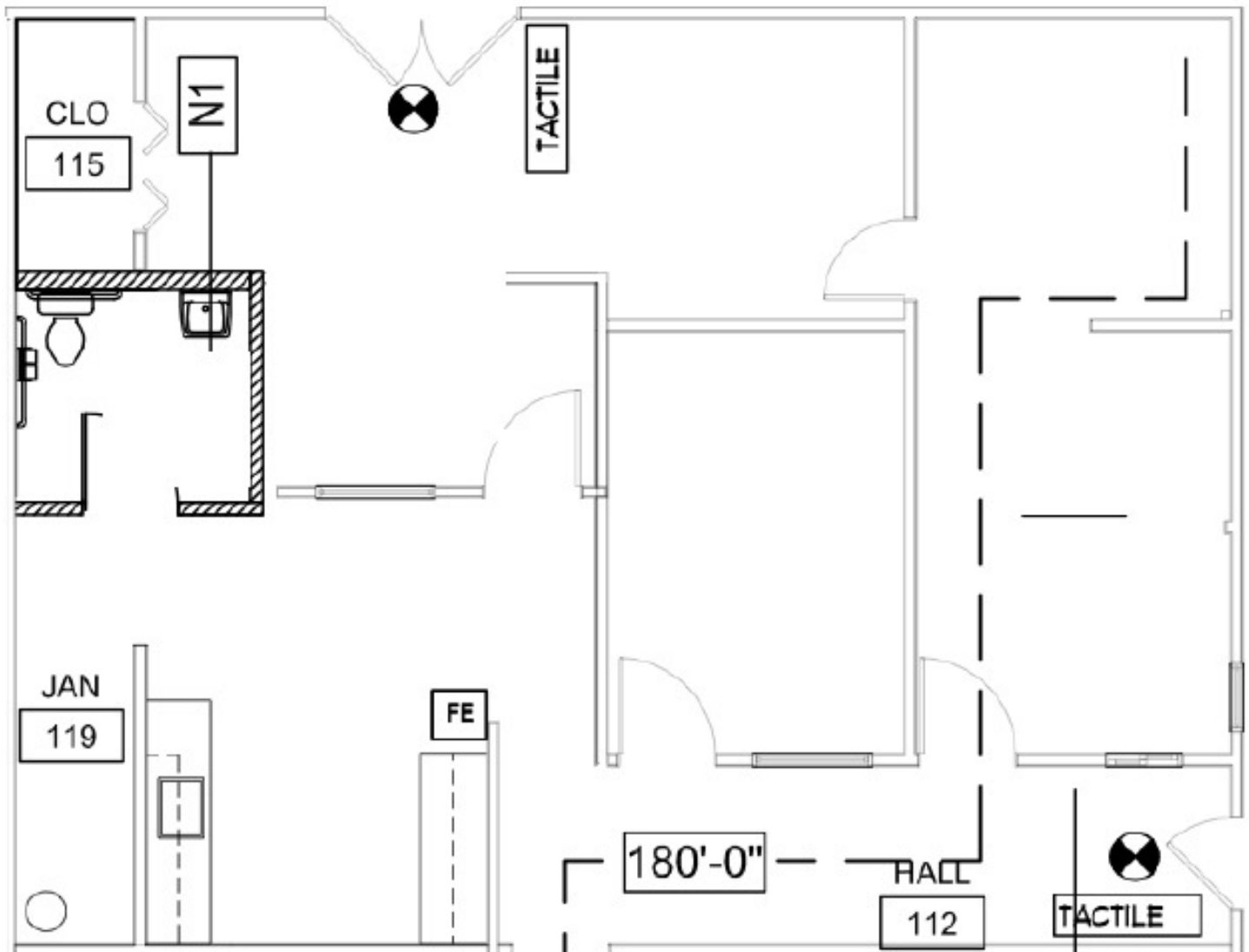
1,250 SF | \$22.00 SF/yr  
Office Space





For Lease

1,250 SF | \$22.00 SF/yr  
Office Space





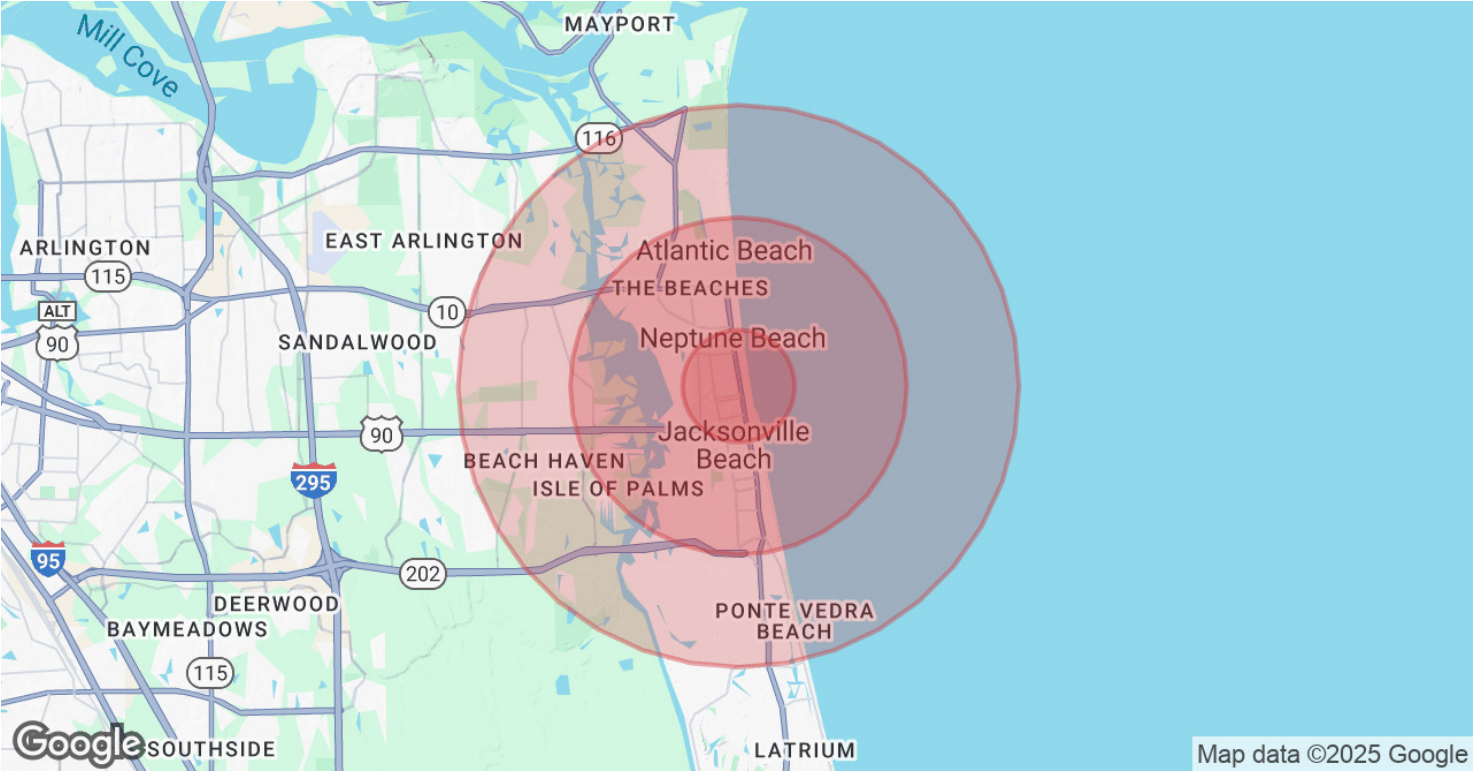
For Lease

1,250 SF | \$22.00 SF/yr

Office Space







Population	1 Mile	3 Miles	5 Miles
Total Population	10,650	46,718	99,575
Average Age	44	44	44
Average Age (Male)	43	43	43
Average Age (Female)	45	45	44

Households & Income	1 Mile	3 Miles	5 Miles
Total Households	5,221	21,296	44,107
# of Persons per HH	2	2.2	2.3
Average HH Income	\$133,797	\$140,563	\$139,467
Average House Value	\$646,107	\$644,247	\$607,439

Demographics data derived from AlphaMap