

# 535 Canton Hwy



Presented By:  
Majors Management

535 Canton Hwy, Cumming, GA 30040



# 535 Canton Hwy

535 Canton Hwy, Cumming, GA 30040

## Property Details

Located at the corner of Sawnee Drive and Canton Hwy

**Price: \$16.00 /SF/YR**

- High traffic area

View the full listing here: <https://www.loopnet.com/Listing/535-Canton-Hwy-Cumming-GA/16627540/>

Rental Rate:	\$16.00 /SF/YR
Property Type:	Retail
Property Subtype:	Storefront
Gross Leasable Area:	7,609 SF
Year Built:	1997
Walk Score ®:	36 (Car-Dependent)
Rental Rate Mo:	\$1.33 /SF/MO

# 535 Canton Hwy

535 Canton Hwy, Cumming, GA 30040

## Listing space

### 1st Floor Ste A

Space Available:	2,000 SF
Rental Rate:	\$16.00 /SF/YR
Date Available:	Now
Service Type:	Triple Net (NNN)
Built Out As:	Standard Retail
Space Type:	Relet
Space Use:	Retail
Lease Term:	Negotiable

Former Pawn Shop

# 535 Canton Hwy

535 Canton Hwy, Cumming, GA 30040

## Location



# 535 Canton Hwy

535 Canton Hwy, Cumming, GA 30040

## Property Photos



Photo of Property



Building Photo

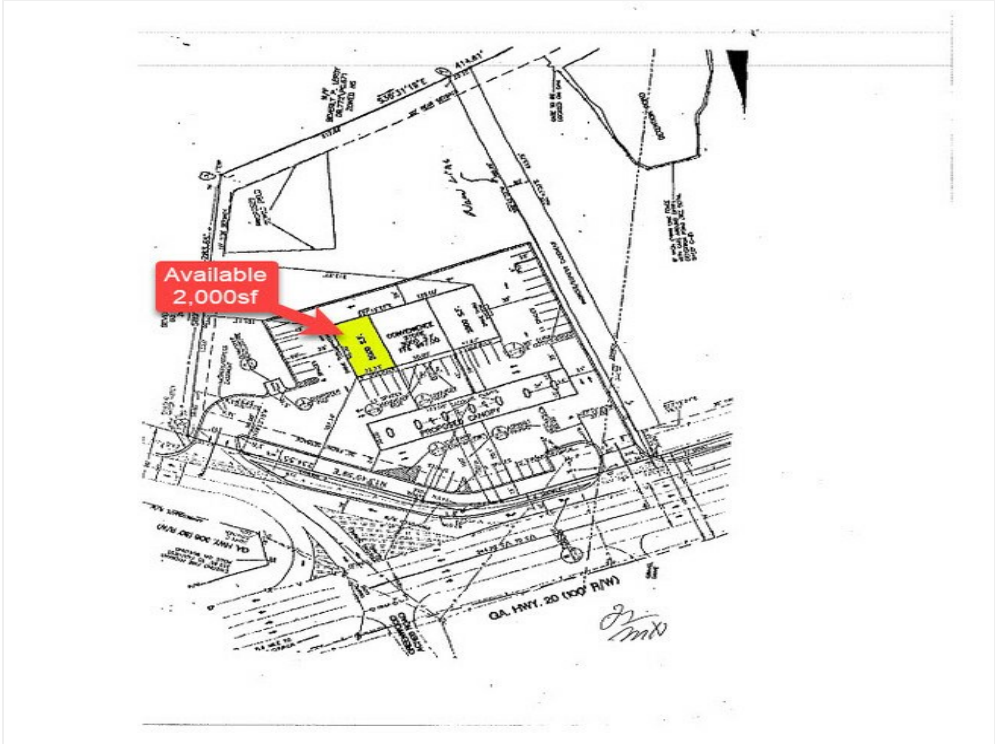
# 535 Canton Hwy

535 Canton Hwy, Cumming, GA 30040

## Property Photos



Photo

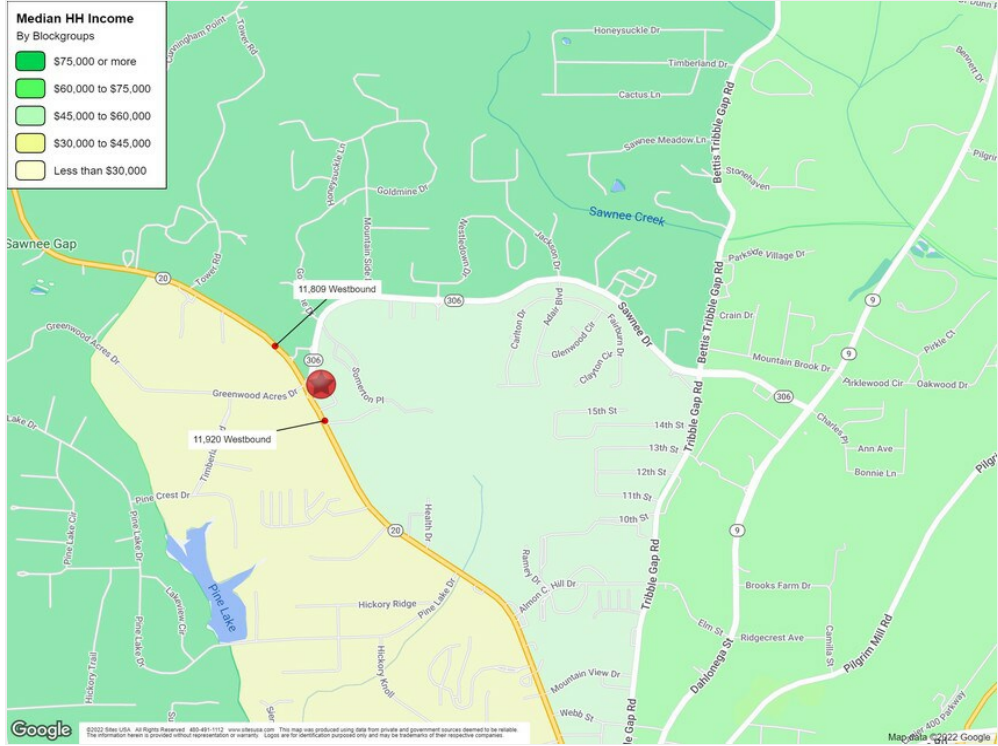


535 Site Plan

# 535 Canton Hwy

535 Canton Hwy, Cumming, GA 30040

## Property Photos



Demographic Map



Aerial

# 535 Canton Hwy

535 Canton Hwy, Cumming, GA 30040

## Property Photos



Primary Photo

# 535 Canton Hwy

535 Canton Hwy, Cumming, GA 30040

**Vickey Bratcher**

[vickeyexcell@aol.com](mailto:vickeyexcell@aol.com)

(770) 338-2620

**Majors Management**

305 Equipment Ct, Suite A

Lawrenceville, GA 30046

