

FOR LEASE: 1672 & 1674 University Avenue, Berkeley, CA
Two Commercial Spaces Nestled in a Tree-shaded Garden



PROPERTY OVERVIEW

Two commercial spaces available for lease in storybook cottages set back from University Avenue. The Fox Commons complex is a green oasis of rustic, brick-sided cottages nestled in a tree-shaded garden with gated access. Situated in Central Berkeley on a major corridor for traffic, businesses, and residents – a gateway from I-80 to UC Berkeley campus. Convenient freeway, AC Transit bus lines, and BART access.

1672 University Avenue (shown bottom left) is visible from the street, with its own yard and gate in front.

1674 University Avenue (shown below right) ground floor of the rear two-story cottage, is accessible through an adjacent gate.



1672 UNIVERSITY AVENUE

Front Building (with basement + attic)

Large front room with vaulted wood ceiling and fireplace. 2 private rooms, cozy nook, and 2 restrooms with showers

± 1,197 RSF Asking Rent: \$2.50 Gross + Utilities



1674 UNIVERSITY AVENUE

Middle Building, ground floor

2 private offices – one with vaulted wood ceiling, the other with open beam ceiling; 1 restroom

± 1,000 RSF Asking Rent: \$2.50 Gross + Utilities



PHOTO TOUR 1672 University Avenue



PHOTO TOUR 1672 University Avenue

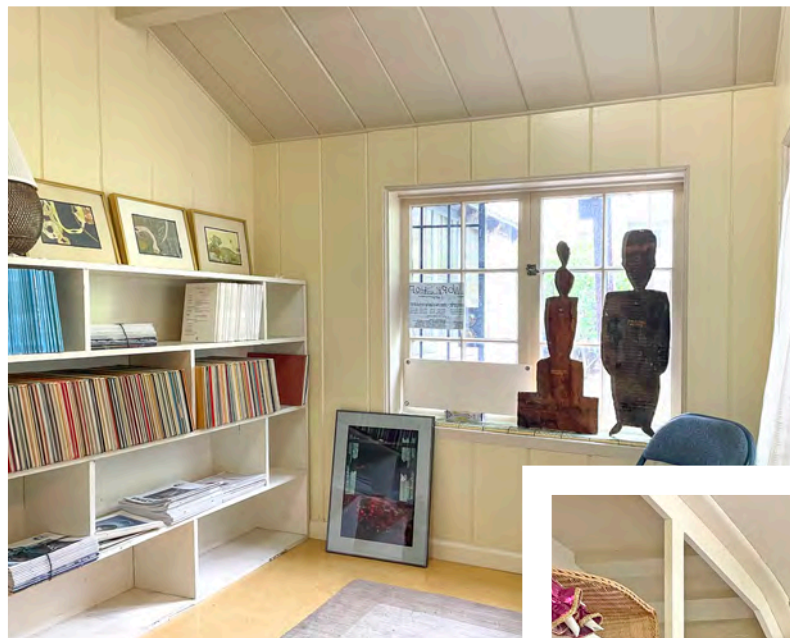
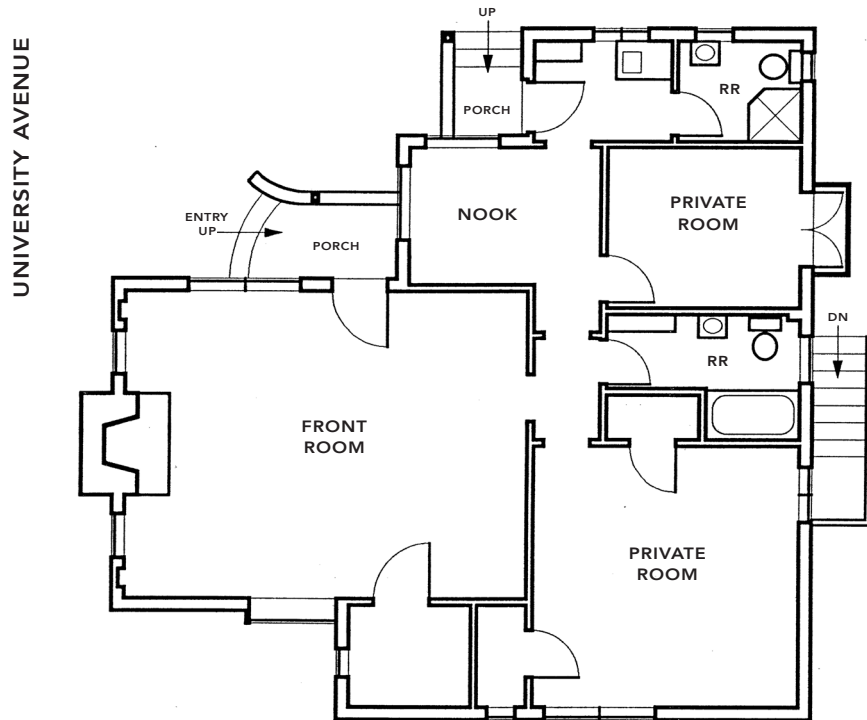


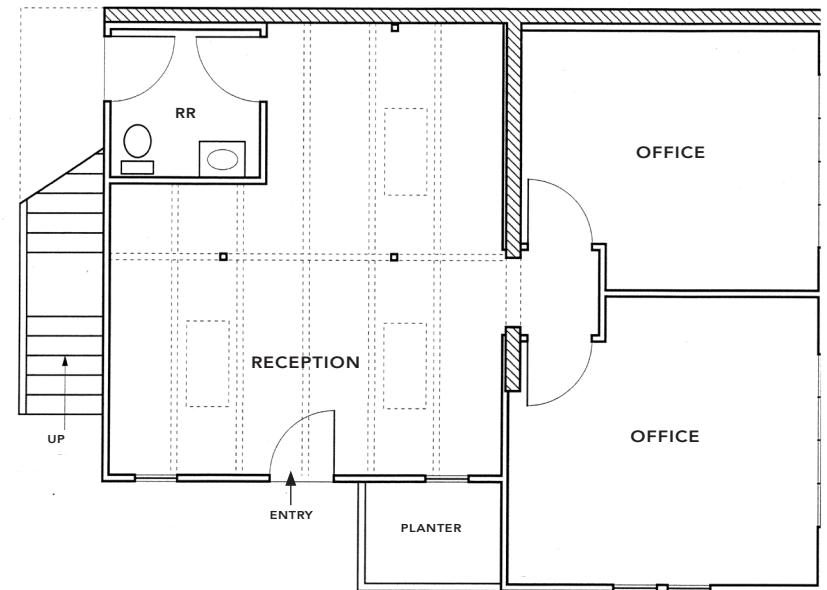
PHOTO TOUR 1674 University Avenue



FLOOR PLANS 1672 & 1674 University Avenue



1672 UNIVERSITY AVENUE

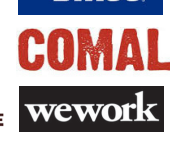


1674- UNIVERSITY AVENUE
1ST FLOOR

LOCATION MAP 1672 & 1674 University Avenue

Central Berkeley is a vibrant community known for its assorted blend of cultural influences, eateries, and locally-owned businesses. Situated in the heart of Berkeley, this neighborhood seamlessly blends residential charm with a bustling, youthful university-town energy. Walk to either North Berkeley BART or Downtown BART stations, or step out front and catch an AC Transit bus. Downtown Berkeley's restaurants, world-class theatre, arts, live music and sports venues are all within walking distance. Nearby fitness options include: CorePower Yoga, Equinox, Funky Door Yoga, and Berkeley YMCA. Close to Gilman District urban wineries, breweries, live music, and shopping, as well as Fourth Street trendy shops and outdoor dining. Near North Shattuck's destination culinary scene, all part of Berkeley's vast dining options with over 350 restaurants citywide.

Destinations within walking distance:



FOURTH STREET



GILMAN DISTRICT



NORTH SHATTUCK





NEIGHBORHOOD

CENTRAL LOCATION

Situated 4 blocks from Downtown Berkeley's restaurants, world-class theatre, arts, live music and sports venues are all within walking distance. This diverse city is densely populated with a highly educated, high-income population.

EXCELLENT ACCESS TO TRANSIT

AC Transit buses operate throughout University Avenue, and two BART Stations are located within 0.6 miles – ±10 minute walk to North Berkeley BART Station, and ±15 minute walk to Downtown Berkeley BART Station and UC Berkeley Campus.

AFFLUENT DEMOGRAPHICS

This property is located in the desirable Central Berkeley Market, with a 3-mile population of 211,983, and an average household income of \$142,014.

EASY WALK TO ALL DOWNTOWN BERKELEY AMENITIES

One of the hottest dining destinations in the Bay Area with over 150 restaurants. Many popular eateries are within 2 blocks of property, on University Avenue.

