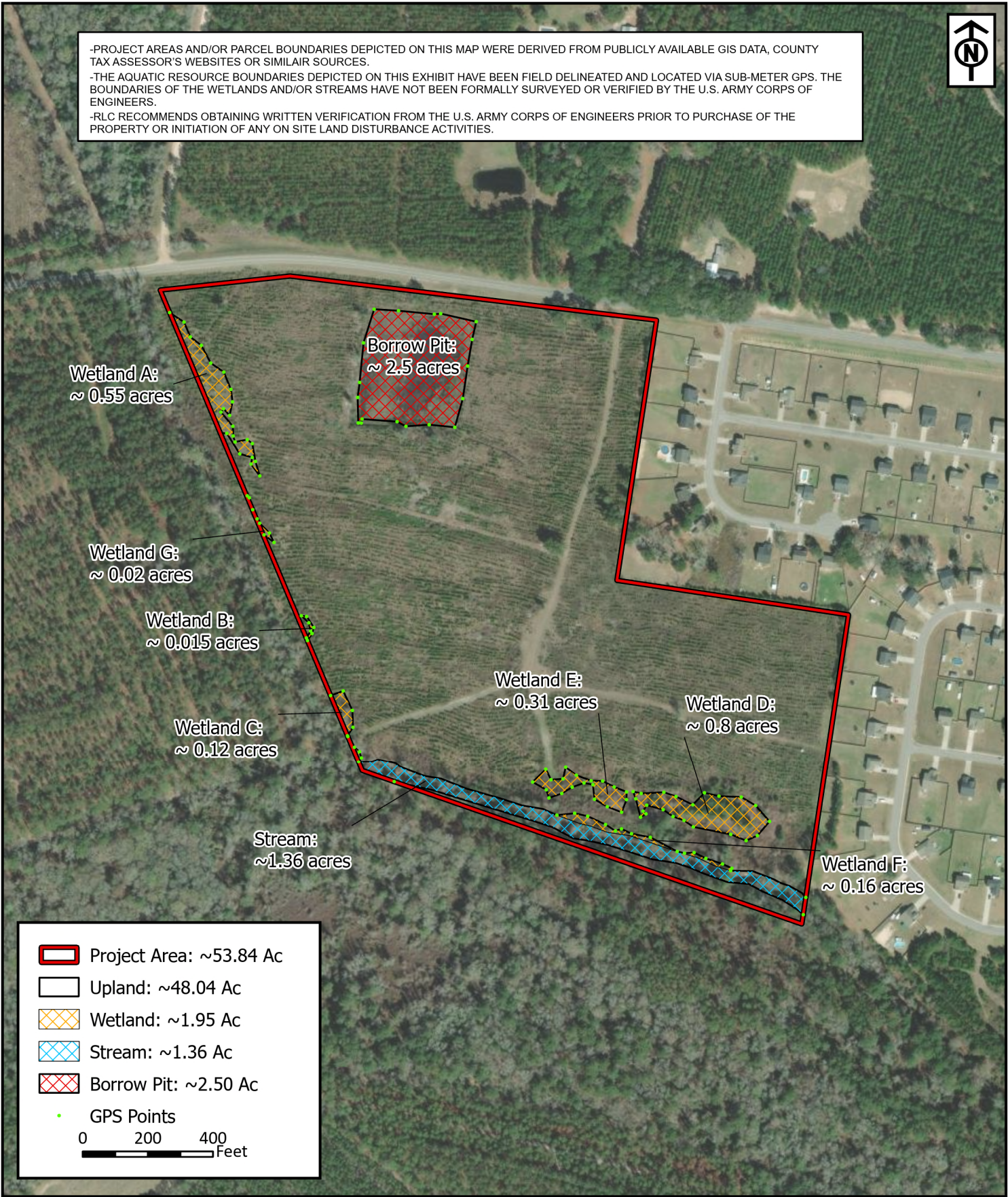




-PROJECT AREAS AND/OR PARCEL BOUNDARIES DEPICTED ON THIS MAP WERE DERIVED FROM PUBLICLY AVAILABLE GIS DATA, COUNTY TAX ASSESSOR'S WEBSITES OR SIMILAIR SOURCES.  
-THE AQUATIC RESOURCE BOUNDARIES DEPICTED ON THIS EXHIBIT HAVE BEEN FIELD DELINEATED AND LOCATED VIA SUB-METER GPS. THE BOUNDARIES OF THE WETLANDS AND/OR STREAMS HAVE NOT BEEN FORMALLY SURVEYED OR VERIFIED BY THE U.S. ARMY CORPS OF ENGINEERS.  
-RLC RECOMMENDS OBTAINING WRITTEN VERIFICATION FROM THE U.S. ARMY CORPS OF ENGINEERS PRIOR TO PURCHASE OF THE PROPERTY OR INITIATION OF ANY ON SITE LAND DISTURBANCE ACTIVITIES.



Wetland A:  
~ 0.55 acres

Borrow Pit:  
~ 2.5 acres

Wetland G:  
~ 0.02 acres

Wetland B:  
~ 0.015 acres

Wetland C:  
~ 0.12 acres

Wetland E:  
~ 0.31 acres

Wetland D:  
~ 0.8 acres

Stream:  
~1.36 acres

Wetland F:  
~ 0.16 acres

	Project Area: ~53.84 Ac
	Upland: ~48.04 Ac
	Wetland: ~1.95 Ac
	Stream: ~1.36 Ac
	Borrow Pit: ~2.50 Ac
	GPS Points

0 200 400 Feet

RLC Project No.:	24-189
Figure No.:	1
Prepared By:	MG
Sketch Date:	10/24/2024
Map Scale :	1 inch = 400 ft

**Wilma Edwards Road Tract**  
Bryan County, Georgia

**Aquatic Resource Delineation GPS Exhibit**  
Prepared For: Laura Thompson

<b>RLC</b>
RESOURCE+LAND CONSULTANTS
41 Park of Commerce Way, Ste. 101 Savannah, Georgia 31405 912.443.5896 www.landc.com