



233 BEDFORD ST

WHITMAN, MA

FOR SALE | ROUTE 18 INDUSTRIAL BUILDING ON 8.55 AC

STEPHEN FLYNN
MATTY DROUILLARD
JAMES STUBBLEBINE

781.917.7026
425.691.7881
617.592.3388

sfflynn@stubblebinecompany.com
matty@stubblebinecompany.com
james@stubblebinecompany.com



THE
STUBBLEBINE
COMPANY

CORFAC INTERNATIONAL

PROPERTY SUMMARY



PROPERTY DESCRIPTION

Route 18 Office/Industrial Building on 8.55 AC for Sale

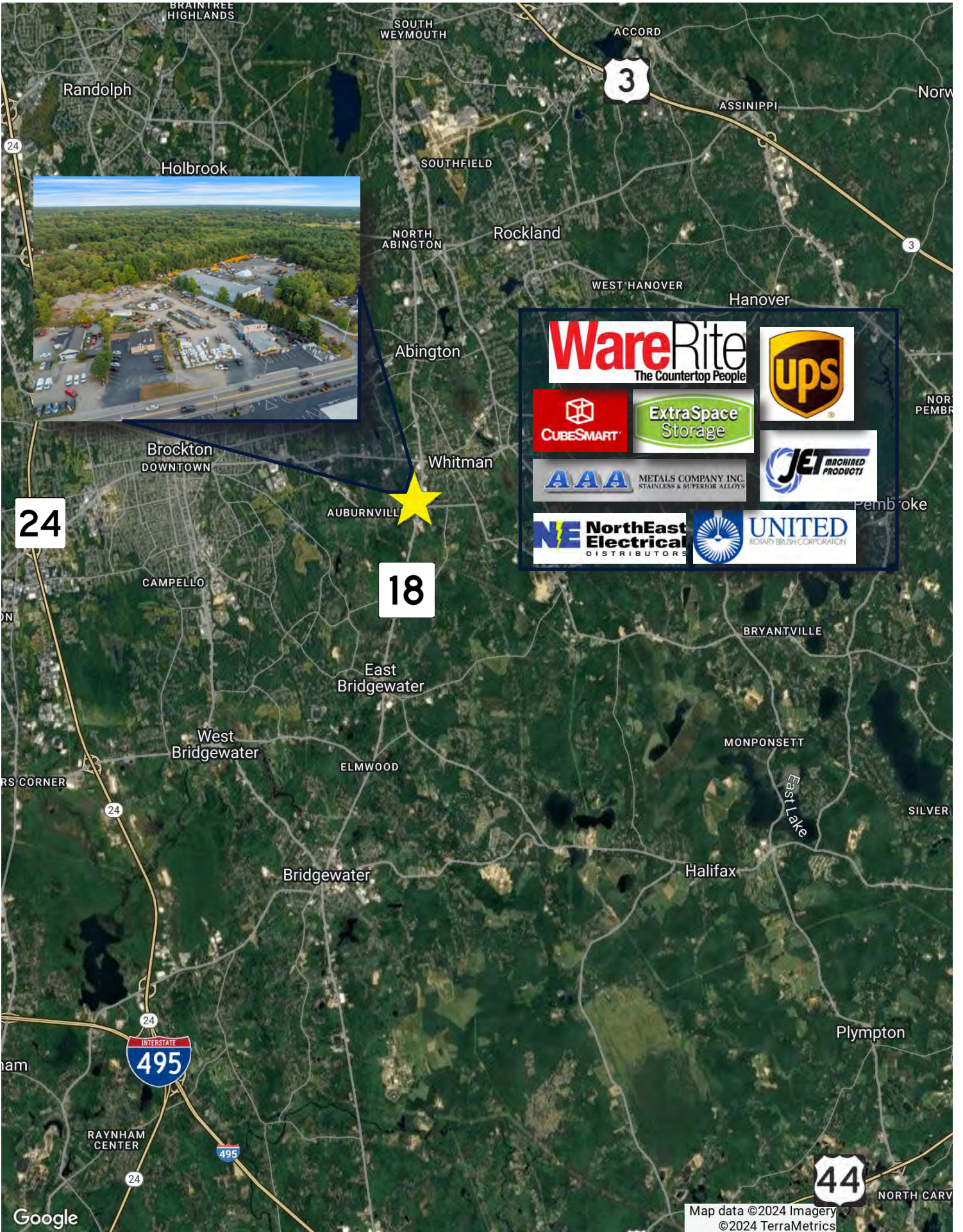
LOCATION HIGHLIGHTS

- 6.7 Miles from Route 24
- 8.6 Miles from Route 183
- 9 Miles from Route 3
- 11 Miles from Route 495

PROPERTY SPECIFICATOINS

Lot Size:	8.55 AC
Usable Acres:	3 +/- AC
Sale Price:	Market

DEMOGRAPHICS	3 MILES	5 MILES	10 MILES
Total Households	15,700	55,225	165,700
Total Population	44,482	158,201	456,579
Average HH Income	\$127,188	\$121,832	\$140,365



24

18

44

Map data ©2024 Imagery ©2024 TerraMetrics

233 BEDFORD ST WHITMAN, MA

FOR SALE | ROUTE 18 INDUSTRIAL BUILDING ON 8.55 AC

STEPHEN FLYNN

781.917.7026

sflynn@stubblebinecompany.com

MATTY DROUILLARD

425.691.7881

matty@stubblebinecompany.com

JAMES STUBBLEBINE

617.592.3388

james@stubblebinecompany.com

We obtained the information above from sources we believe to be reliable. However, we have not verified its accuracy and make no guarantee, warranty or representation about it. It is submitted subject to the possibility of errors, omissions, change of price, rental or other conditions, prior sale, lease or financing, or withdrawal without notice. We include projections, opinions, assumptions or estimates for example only, and they may not represent current or future performance of the property. You and your tax and legal advisors should conduct your own investigation of the property and transaction.



THE
STUBBLEBINE
COMPANY

CORFAC INTERNATIONAL