



## Ground floor office with lobby exposure

- 2,392 RSF available
- \$28.50/sf full service
- 4.5/1,000 parking ratio
- Proximity to I-75 interchange
- Great northeast Tampa location in Highwoods Preserve - join corporate neighbors like Depository Trust & Clearing Corporation and MetLife
- Numerous retail, restaurant and convenience options in close proximity: Glory Days, TGI Friday's, Chili's, Subway, Chick Fil A, Panera Bread, Circle K, 7-11, CVS, Walgreens and more

## Get more information

**Anne-Marie Ayers**

Principal

+1 813 444 0620

[annemarie.ayers@avisonyoung.com](mailto:annemarie.ayers@avisonyoung.com)

**Laurie Hynes**

Sr. Client Services Coordinator

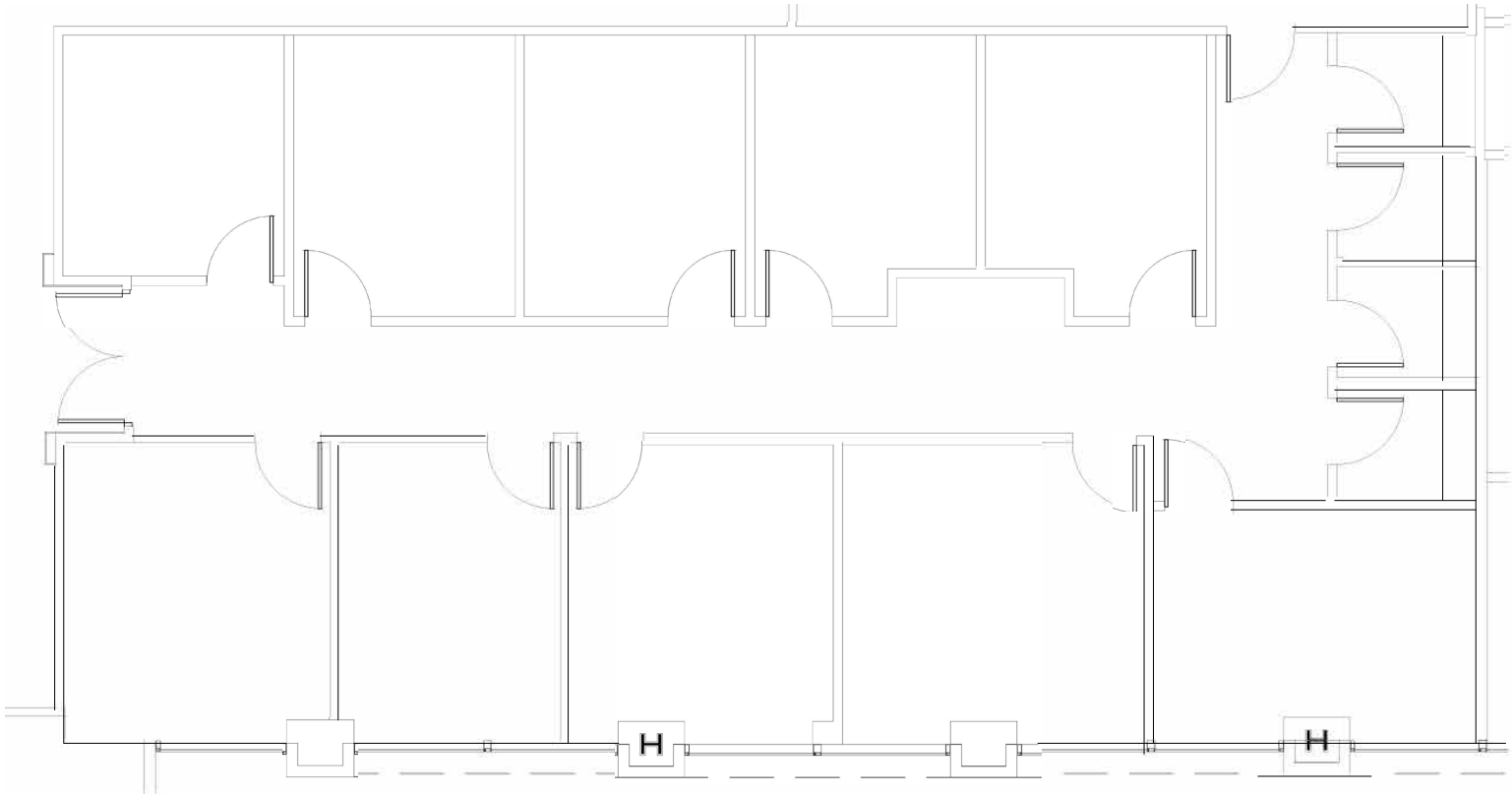
+1 813 444 0621

[laurie.hynes@avisonyoung.com](mailto:laurie.hynes@avisonyoung.com)

Burns & Wilcox Center  
18302 Highwoods Preserve Parkway  
Tampa, FL 33647

# First Floor

Suite 115  
2,392 rsf



**Get more  
information**

**Anne-Marie Ayers**  
Principal  
+1 813 444 0620

**Laurie Hynes**  
Sr. Client Services Coordinator  
+1 813 444 0621

