



Office For Sublease

**Lease Rate:**

**\$18.00/SF Full Service**

**Contact:**

**James Bullington**

Executive Vice President

+1 801 836 2400

james.bullington@colliers.com

**Colliers**

2100 Pleasant Grove Blvd., Suite 200

Pleasant Grove, UT 84062

Main: +1 801 947 8300

colliers.com

## Novell Tower Office Sublease

**1800 Novell Place, Ste 400  
Provo, Utah**

### Building Amenities

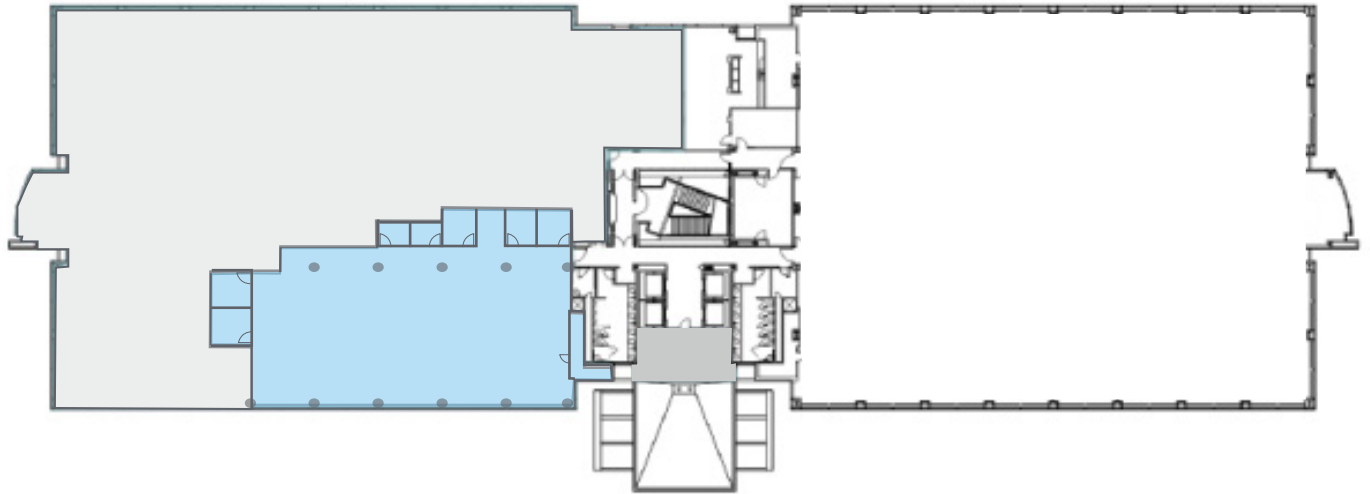
- Class "A" building
- Master lease expires: April 30, 2030
- Furniture available
- On-site building security
- Secured key-card building access
- Easy access to Provo FrontRunner
- Close to revitalized downtown Provo
- Immediate access to I-15

**Available: 7,500 SF ±**

**Lease Rate: \$18.00 PSF | Full Service**

# Floor Plans

Total SF: 7,500 SF ±





# Pictures







### Colliers

2100 Pleasant Grove Blvd., Suite 200  
Pleasant Grove, UT 84062  
Main: +1 801 947 8300  
colliers.com

### James Bullington

Executive Vice President

+1 801 836 2400

james.bullington@colliers.com

This document has been prepared by Colliers International for advertising and general information only. Colliers International makes no guarantees, representations or warranties of any kind, expressed or implied, regarding the information including, but not limited to, warranties of content, accuracy and reliability. Any interested party should undertake their own inquiries as to the accuracy of the information. Colliers International excludes unequivocally all inferred or implied terms, conditions and warranties arising out of this document and excludes all liability for loss and damages arising there from. This publication is the copyrighted property of Colliers International and/or its licensor(s). ©2025. All rights reserved.