

OFFICE SPACE AVAILABLE IMMEDIATELY



## AVAILABILITY

*11,668 SF located on the 2nd level*

- \$15.00 PSF full-service, net of cleaning
- 1st floor lobby entrance
- Mix of office and open area

## PROPERTY FEATURES

- Abundant parking
- Convenient to Route 28, Route 50, I-66 and the Dulles Toll Road
- Numerous Restaurants, Hotels, and Retail Amenities within 1/2 mile

**RYAN MOODY**

rmoody@klnb.com | 703-268-2739

**KEENAN WOOFER**

kwoofer@klnb.com | 703-268-2744

**DALLON L. CHENEY**

dcheney@klnb.com | 703-268-2703

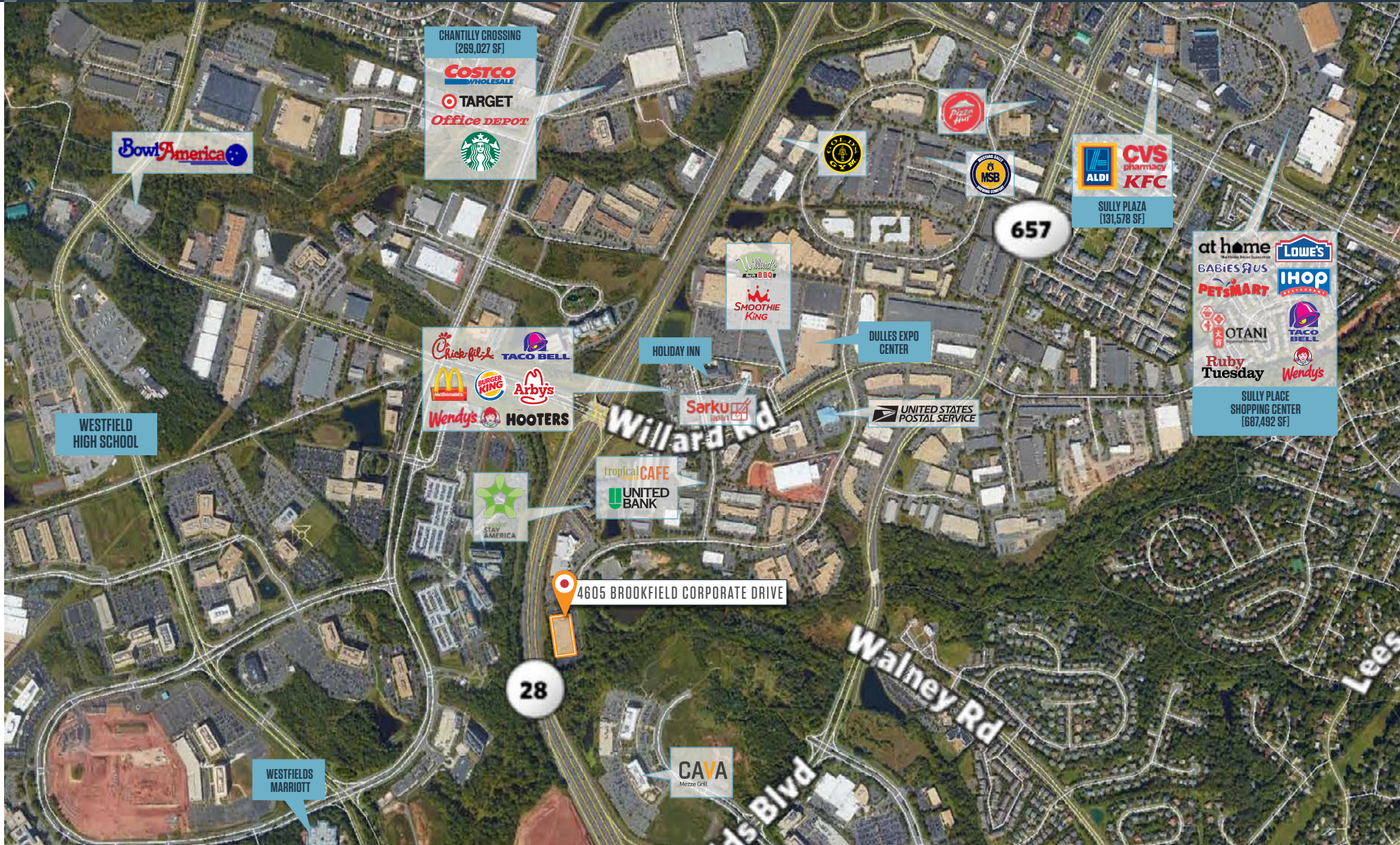
**klnb.com**



# AERIAL

## 4605 BROOKFIELD CORPORATE DRIVE

4605 BROOKFIELD CORPORATE DRIVE, CHANTILLY, VA 20151, FAIRFAX COUNTY



**RYAN MOODY**

rmood@klnb.com | 703-268-2739

**KEENAN WOOFER**

kwoofer@klnb.com | 703-268-2744

**DALLON L. CHENEY**

dcheney@klnb.com | 703-268-2703

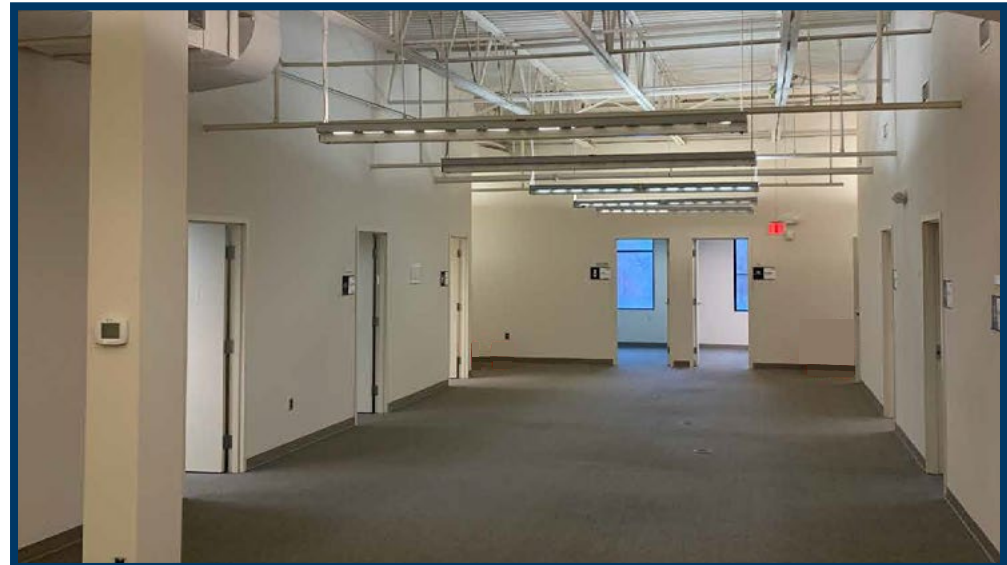
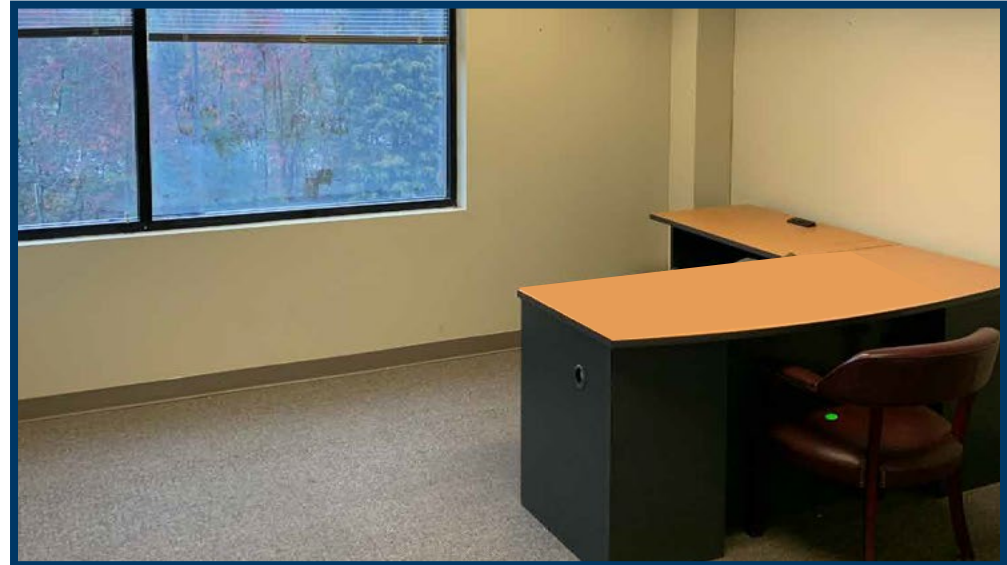
**klnb.com**



# PHOTOS

## 4605 BROOKFIELD CORPORATE DRIVE

4605 BROOKFIELD CORPORATE DRIVE, CHANTILLY, VA 20151, FAIRFAX COUNTY



**RYAN MOODY**

rmoody@klnb.com | 703-268-2739

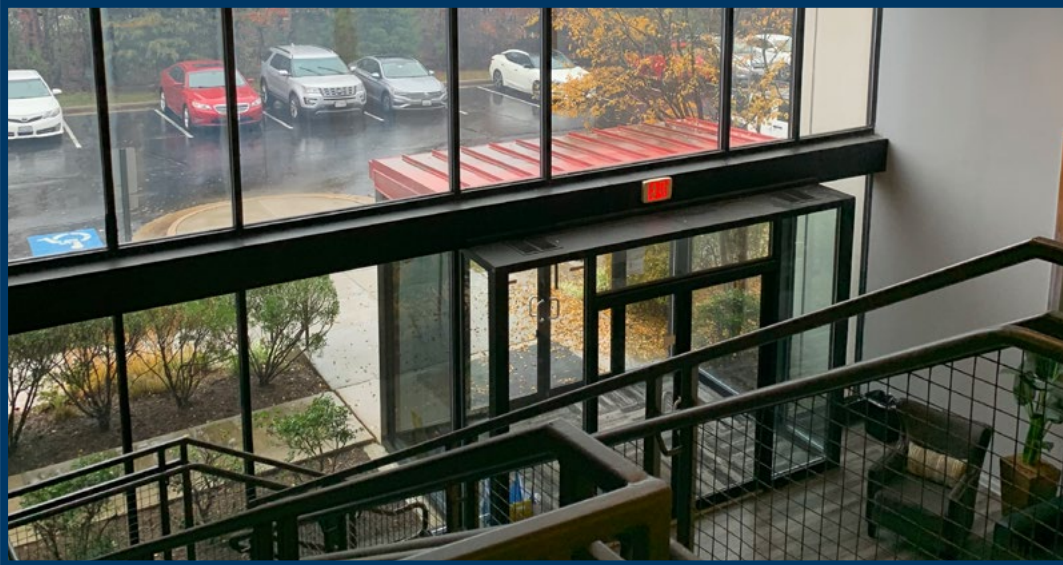
**KEENAN WOOFER**

kwoofer@klnb.com | 703-268-2744

**DALLON L. CHENEY**

dcheney@klnb.com | 703-268-2703

**klnb**



**RYAN MOODY**

rmood@klnb.com | 703-268-2739

**KEENAN WOOFER**

kwoof@klnb.com | 703-268-2744

**DALLON L. CHENEY**

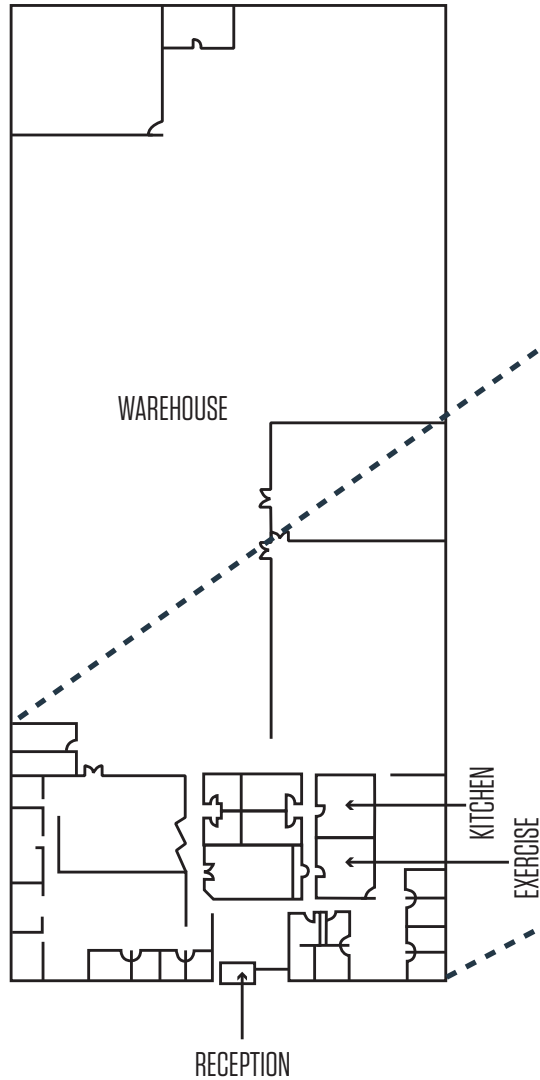
dcheney@klnb.com | 703-268-2703

# FLOOR PLAN

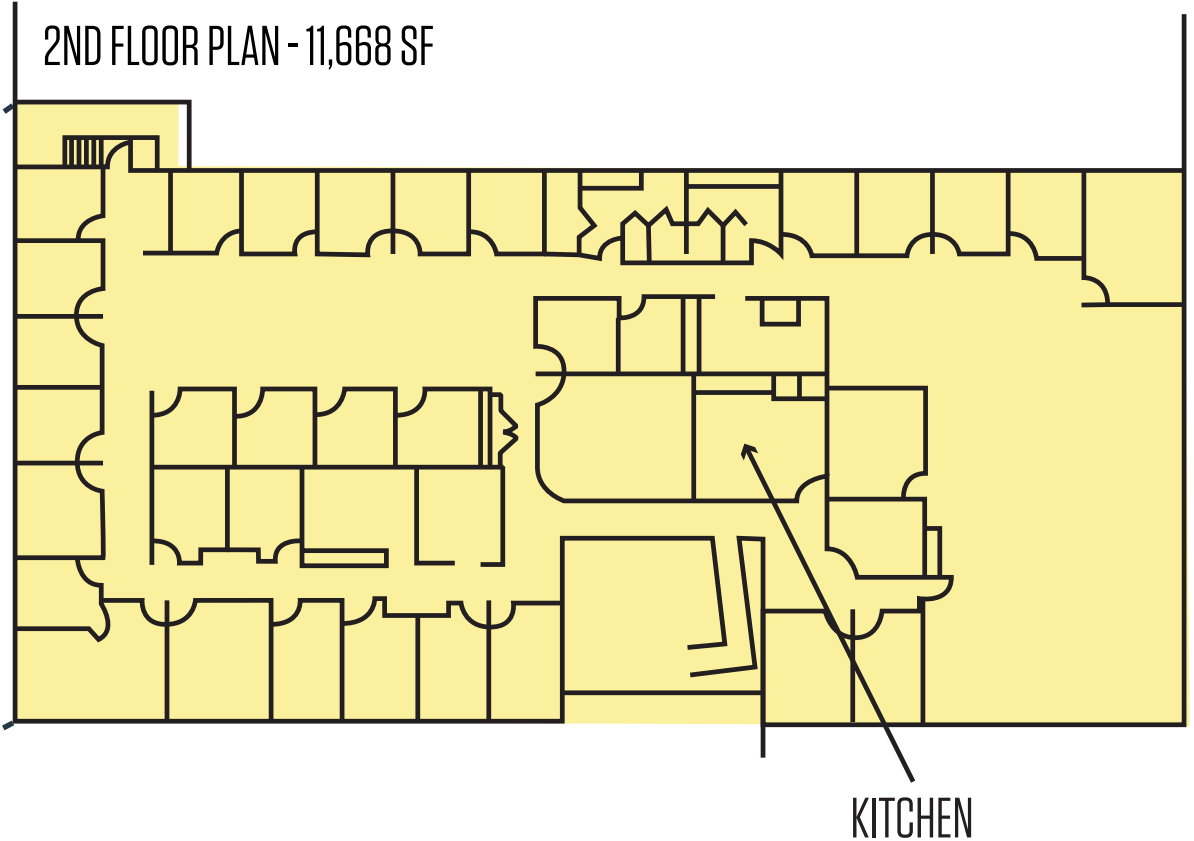
## 4605 BROOKFIELD CORPORATE DRIVE

4605 BROOKFIELD CORPORATE DRIVE, CHANTILLY, VA 20151, FAIRFAX COUNTY

1ST FLOOR PLAN - 57,573 SF



2ND FLOOR PLAN - 11,668 SF



[CLICK TO VIEW PROPERTY WEBSITE](#)



**NAI**klb

8065 Leesburg Pike, Suite 700  
Vienna, VA 22182

While we have no reason to doubt the accuracy of any of the information supplied, we cannot, and do not, guarantee its accuracy. All information should be independently verified prior to a purchase or lease of the property. We are not responsible for errors, omissions, misuse, or misinterpretation of information contained herein and make no warranty of any kind, express or implied, with respect to the property or any other matters.