



Lyons Road Land

NEC Lyons Road & Lantana Road
Lake Worth, FL 33467

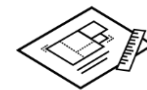
Property Features

- 2.14 acres of commercial land, ideal for a variety of commercial uses with approvals in place for 19,000 SF retail/office building
- Lyons Rd. expansion will ease North and South travel
- Located on the North-East corner of Lyons Rd. and Lantana Rd., with multiple access points
- Ideally located just East of SR 7 and West of Jog Rd.
- Neighboring tenants include Dollar Tree, TD Bank, CVS, LA Fitness and more
- Over 26,000 cars per day

Key Highlights



Multi-use parcel



Approvals in place for retail/office building

Demographics

	3 Mile	5 Mile
Household Units	29,708	79,518
Population	70,555	194,710
Avg. Income	\$128,003	\$114,062

Bruce Corn

Managing Director
bcorn@mhcreal.com

Lyons Road Land

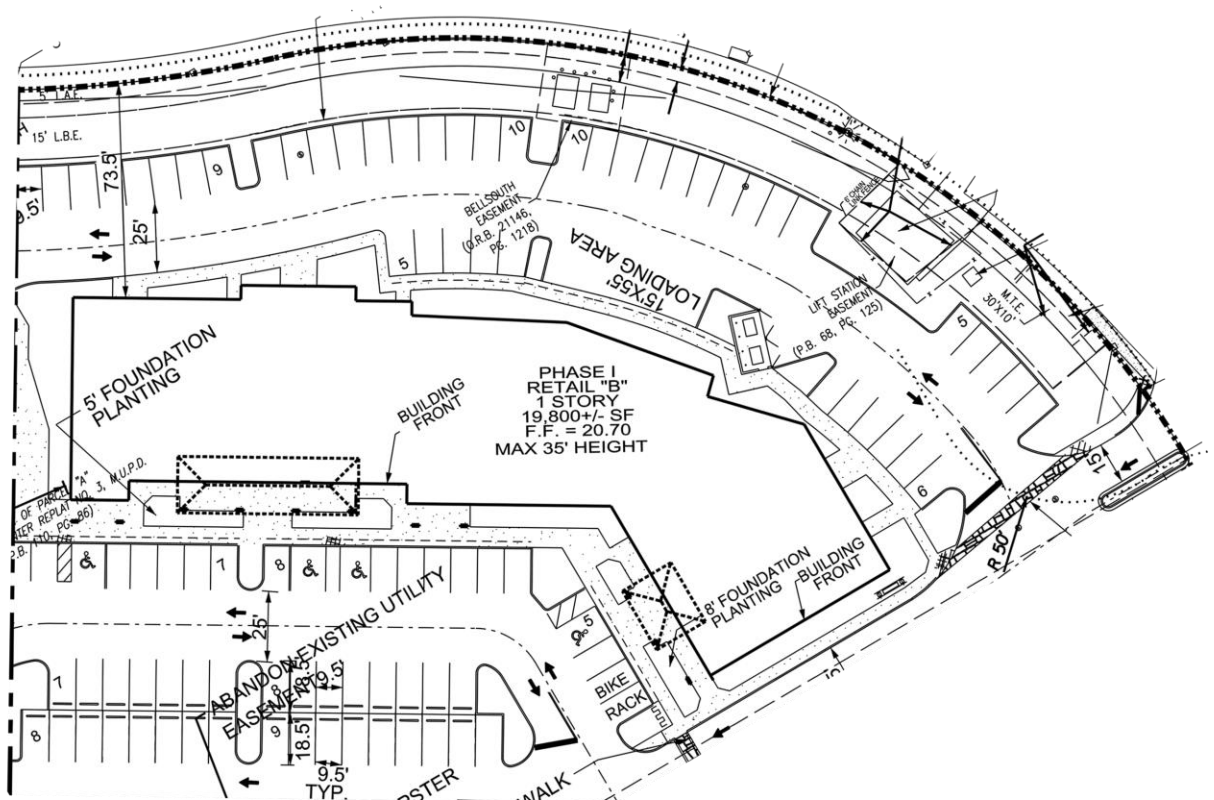
NEC Lyons Road & Lantana Road
Lake Worth, FL 33467

For Sale
±2.14 Acres
Commercial Land

Fantastic Western Palm Beach County Development Opportunity

This multi-use parcel is conveniently located near the West Lake Worth/Wellington submarket, close to the Florida Turnpike and an easy drive to I-95.

Plans for a ±19,800 SF single-story retail/office building have been approved!



Bruce Corn

Managing Director
bcorn@mhcreal.com

NO WARRANTY OR REPRESENTATION, EXPRESS OR IMPLIED, IS MADE AS TO THE ACCURACY OF THE INFORMATION CONTAINED HEREIN, AND THE SAME IS SUBMITTED SUBJECT TO ERRORS, OMISSIONS, CHANGE OF PRICE, RENTAL OR OTHER CONDITIONS, PRIOR SALE, LEASE OR FINANCING, OR WITHDRAWAL WITHOUT NOTICE, AND OF ANY SPECIAL LISTING CONDITIONS IMPOSED BY OUR PRINCIPALS NO WARRANTIES OR REPRESENTATIONS ARE MADE AS TO THE CONDITION OF THE PROPERTY OR ANY HAZARDS CONTAINED THEREIN ARE ANY TO BE IMPLIED.

1601 Forum Place Suite 200
West Palm Beach, FL 33401
561 471 8000
mhcreal.com