

FOSTER | SQUARE



AVAILABLE FOR LEASE

1,140 SF

PAD OPPORTUNITY

2,325 SF

2ND GENERATION RESTAURANT SPACE



FOSTER | SQUARE

THE PROJECT

Foster Square is a vibrant mixed-use development including roughly 416 residential units comprising of for-sale, rentable and assisted living units and roughly 30,000 square feet of retail space with dedicated retail parking. Co-Tenants include Starbucks, India Cash and Carry, Curry Pizza House, Happy Lemon, United States Postal Service and more.

THE AREA

Local Gilead Sciences, Visa, Inc., and ZOOX are amongst Foster City's top employers with a combined +10,000 employees. Foster Square is centrally located in the heart of Foster City and is easily accessible from Highway 92 and 101. Household incomes in excess of \$220,000 in a 1 mile radius with a heavy daytime population of 150,000 people in a 5 mile radius.

WHY IT'S A GOOD OPPORTUNITY

Rare second generation space available for lease. Opportunity for an array of food users in a diverse center with proven operators.

PROJECT HIGHLIGHTS



Restaurant space for lease



High identity, mixed-use project located in the heart of Foster City



Easily accessible from Highway 92



Ample retail parking available

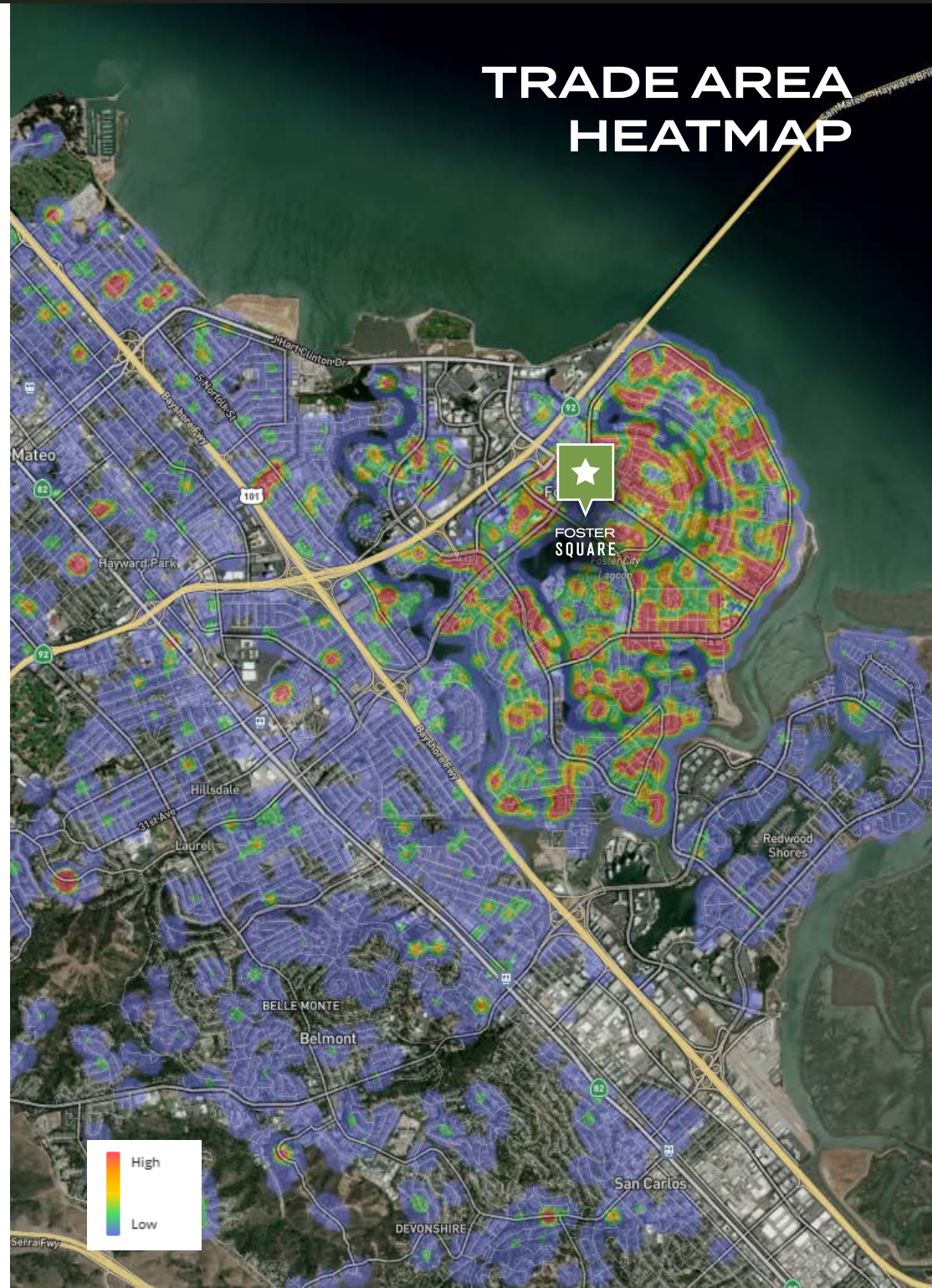
DEMOGRAPHICS

	1 MILE	3 MILES	5 MILES
Population	21,560	108,845	207,849
Average Household Income	\$223,083	\$209,377	\$224,89
Daytime Population	27,653	91,183	151,602

TRAFFIC COUNTS

Foster City Blvd	19,994 ADT
Metro Center Blvd	11,927 ADT

Source: 2022 Esri.



TRADE AREA HEATMAP

FOSTER CITY NEIGHBORHOODS

BAY VISTA

967 Homes



FOSTER SQUARE

TREASURE ISLE

762 Homes

THE ISLANDS

534 Homes

ISLE COVE

658 Homes

DOLPHIN BAY

730 Homes

CARMEL VILLAGE

775 Homes

MARINA POINT

364 Homes

HARBOR SIDE

736 Homes

SEA COLONY

887 Homes

RETAILER	SUITE
United States Postal Service	100
Netra Arts Canvas & Cafe	110
India Cash & Carry	115
Sizzling Lunch	120
Chuan Chim Thai	125
2ND GEN. RESTAURANT SPACE	130
Mumu Hot Pot	135
Leased	145
Curry Pizza House	150
Starbucks	155
Happy Lemon	170
PAD OPPORTUNITY SPACE	1,140 SF

NOTE: Please do not disturb tenants.

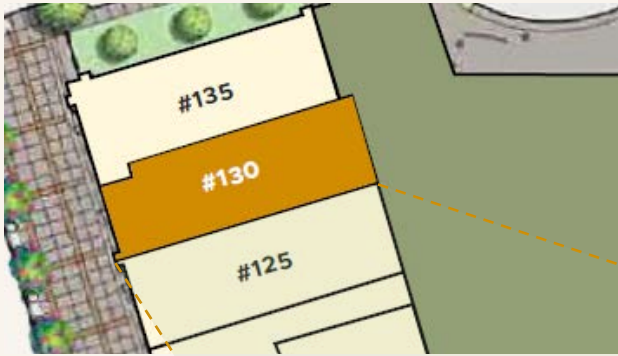


■ AVAILABLE

FOSTER CITY BLVD



SUITE 130 2ND GENERATION RESTAURANT SPACE



±2,325 SF

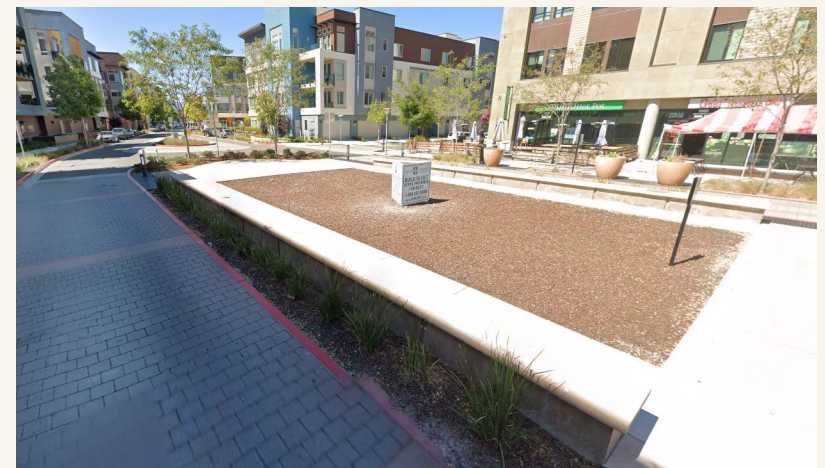


NOTE: PLEASE DO NOT DISTURB TENANTS.

PAD OPPORTUNITY SPACE



±1,140 SF



NOTE: PLEASE DO NOT DISTURB TENANTS.





FOSTER | SQUARE

JAMES CHUNG | jchung@theeoniccompany.com | (408) 400-7017 | LIC. 01408190

SHELBY SWANSON | sswanson@theeoniccompany.com | (408) 400-3879 | LIC. 02075363