



FOR LEASE

# First & Main

100 SW MAIN ST, PORTLAND, OR 97204

## Former Quick-Casual Food Service Space

**CX ZONING** Central Commercial

**GROUND FLOOR** retail unit in Class A office building on bus line. 2,200 sf of inviting FOH with open seating area and tons of natural light, includes separate space for catering events. BOH includes walk-in cooler, 3 sinks and hand sink, floor drains and other infrastructure.

**LOCATION** First & Main is a 16-story, LEED Platinum office tower located in downtown Portland within walking distance of the city's most popular restaurants, hotels, business services, and shopping destinations, as well as light rail and major bus stops. The property offers spectacular views and numerous on-site amenities. Three levels of below-grade parking with up to 300 stalls. 24 hour on site security.

95

WALK SCORE

85

BIKE SCORE

93

TRANSIT SCORE

**CARYL BROWN**

503.221.2268

[caryl.brown@kidder.com](mailto:caryl.brown@kidder.com)

**COLLEEN COLLEARY**

503.221.2265

[colleen.colleary@kidder.com](mailto:colleen.colleary@kidder.com)

**Kidder Mathews**



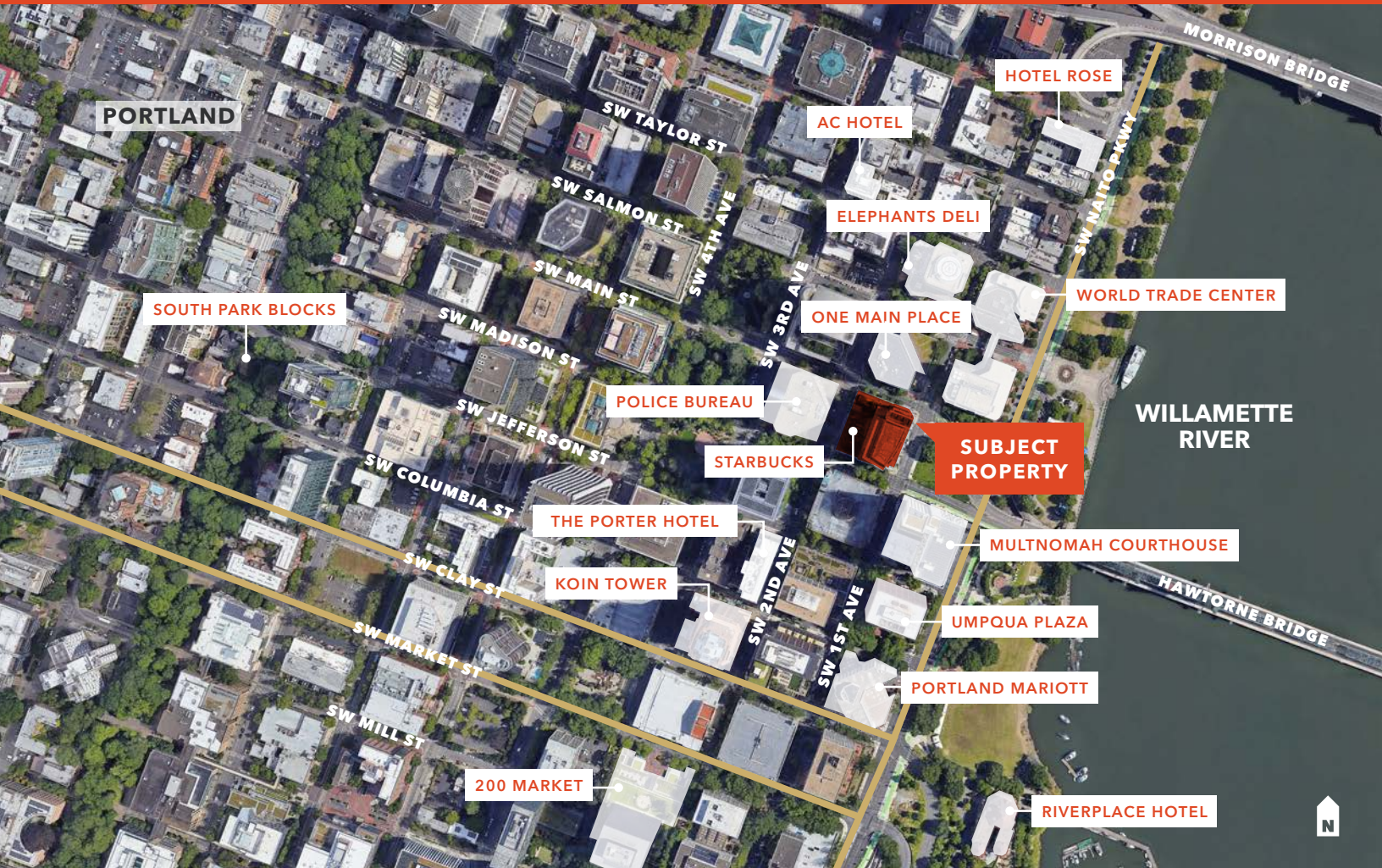
This information supplied herein is from sources we deem reliable. It is provided without any representation, warranty, or guarantee, expressed or implied as to its accuracy. Prospective Buyer or Tenant should conduct an independent investigation and verification of all matters deemed to be material, including, but not limited to, statements of income and expenses. Consult your attorney, accountant, or other professional advisor.



FOR LEASE

# First & Main

100 SW MAIN ST, PORTLAND, OR 97204



## DEMOGRAPHICS

2022	1 Mile	3 Miles	5 Miles
Population	29,589	191,780	443,069
Households	18,852	101,224	207,975
Median HH Income	\$58,109	\$86,998	\$108,940
Daytime Employment	103,333	245,026	347,991

**CARYL BROWN**  
503.221.2268  
[caryl.brown@kidder.com](mailto:caryl.brown@kidder.com)

**COLLEEN COLLEARY**  
503.221.2265  
[colleen.colleary@kidder.com](mailto:colleen.colleary@kidder.com)

[KIDDER.COM](http://KIDDER.COM)

AMERICAN  
ASSETS  
TRUST

**km** Kidder  
Mathews

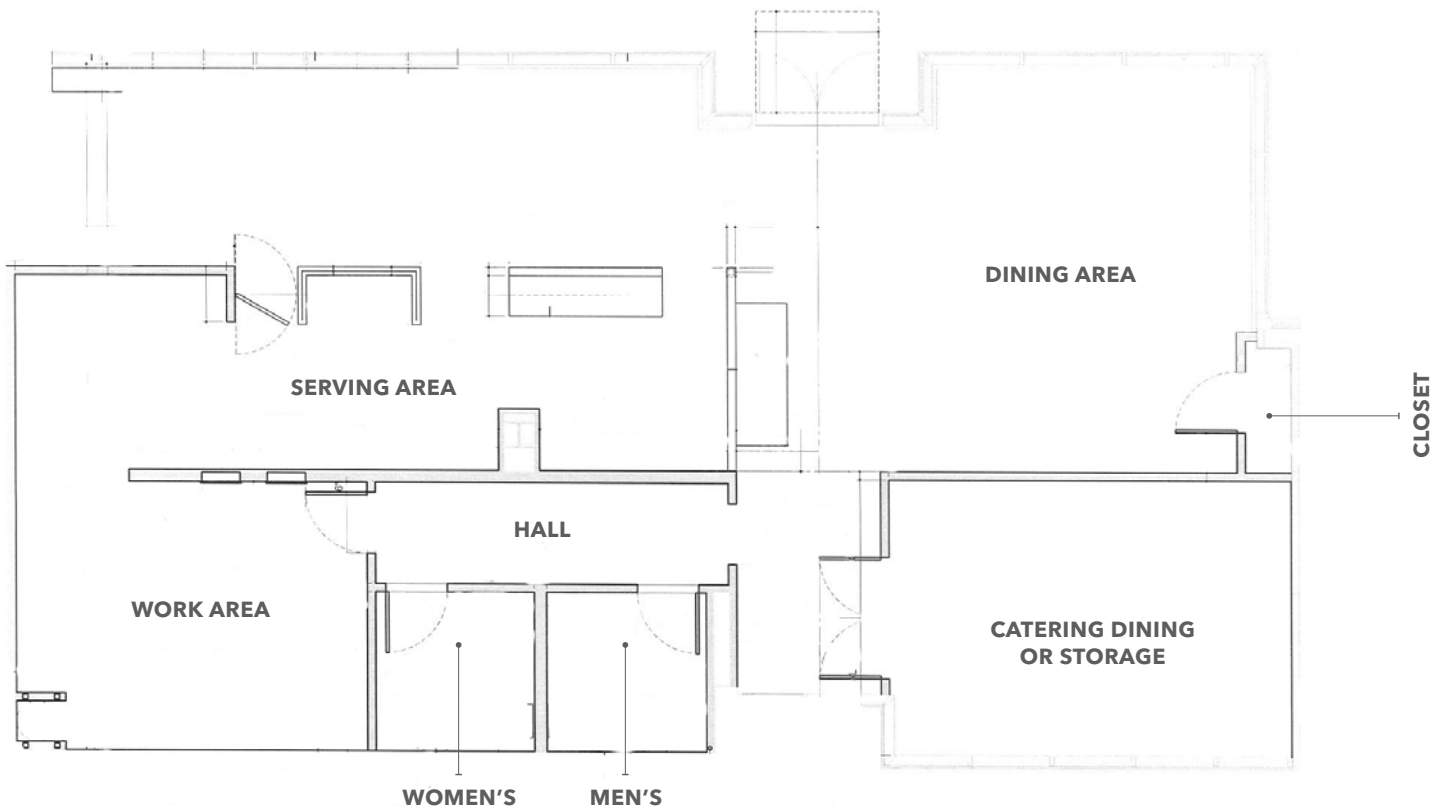
This information supplied herein is from sources we deem reliable. It is provided without any representation, warranty, or guarantee, expressed or implied as to its accuracy. Prospective Buyer or Tenant should conduct an independent investigation and verification of all matters deemed to be material, including, but not limited to, statements of income and expenses. Consult your attorney, accountant, or other professional advisor.

**FOR LEASE**

# First & Main

100 SW MAIN ST, PORTLAND, OR 97204

## Floor Plan



**CARYL BROWN**  
503.221.2268  
[caryl.brown@kidder.com](mailto:caryl.brown@kidder.com)

**COLLEEN COLLEARY**  
503.221.2265  
[colleen.colleary@kidder.com](mailto:colleen.colleary@kidder.com)

[KIDDER.COM](http://KIDDER.COM)

AMERICAN  
ASSETS  
TRUST

**km** Kidder  
Mathews

This information supplied herein is from sources we deem reliable. It is provided without any representation, warranty, or guarantee, expressed or implied as to its accuracy. Prospective Buyer or Tenant should conduct an independent investigation and verification of all matters deemed to be material, including, but not limited to, statements of income and expenses. Consult your attorney, accountant, or other professional advisor.

FOR LEASE

# First & Main

100 SW MAIN ST, PORTLAND, OR 97204



**CARYL BROWN**  
503.221.2268  
[caryl.brown@kidder.com](mailto:caryl.brown@kidder.com)

**COLLEEN COLLEARY**  
503.221.2265  
[colleen.colleary@kidder.com](mailto:colleen.colleary@kidder.com)

[KIDDER.COM](http://KIDDER.COM)

AMERICAN  
ASSETS  
TRUST

**km** Kidder  
Mathews

This information supplied herein is from sources we deem reliable. It is provided without any representation, warranty, or guarantee, expressed or implied as to its accuracy. Prospective Buyer or Tenant should conduct an independent investigation and verification of all matters deemed to be material, including, but not limited to, statements of income and expenses. Consult your attorney, accountant, or other professional advisor.