

The
STRAND

WHERE THE
WORKDAY MEETS
the Waterfront



120-180 5TH STREET
HUNTINGTON BEACH, CA 92648

 CUSHMAN &
WAKEFIELD



Ride the Wave

TO A BETTER WORKDAY

Imagine stepping out of a morning meeting and into a sea breeze. Lunch on the patio of a waterfront restaurant. An afternoon brainstorm with the sound of waves in the background. At The Strand, Huntington Beach's premier mixed-use destination, this isn't a retreat — it's just a Tuesday. Nestled steps from the Huntington Beach Pier and Main Street shops, this is a rare coastal workplace where the energy of the beach isn't a distraction — it's your greatest asset. For teams who believe where you work shapes how you work, there is simply nowhere else like this in Southern California.

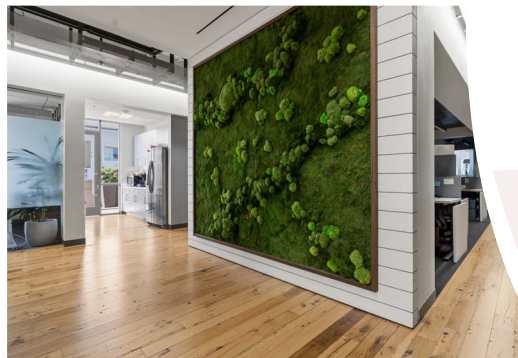
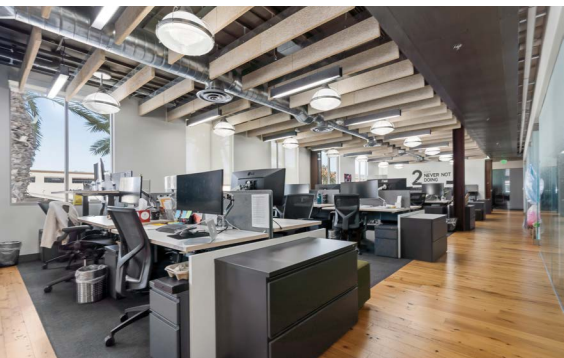
IDEAL LANDMARK HQ
OFFICE LOCATION
WITH BEACH VIEWS

MULTIPLE
CONFIGURATIONS
AVAILABLE

DIRECT ACCESS TO
SUBTERRANEAN
GARAGE

A CURATED COLLECTION
OF DESIRABLE DINING
AND SHOPPING



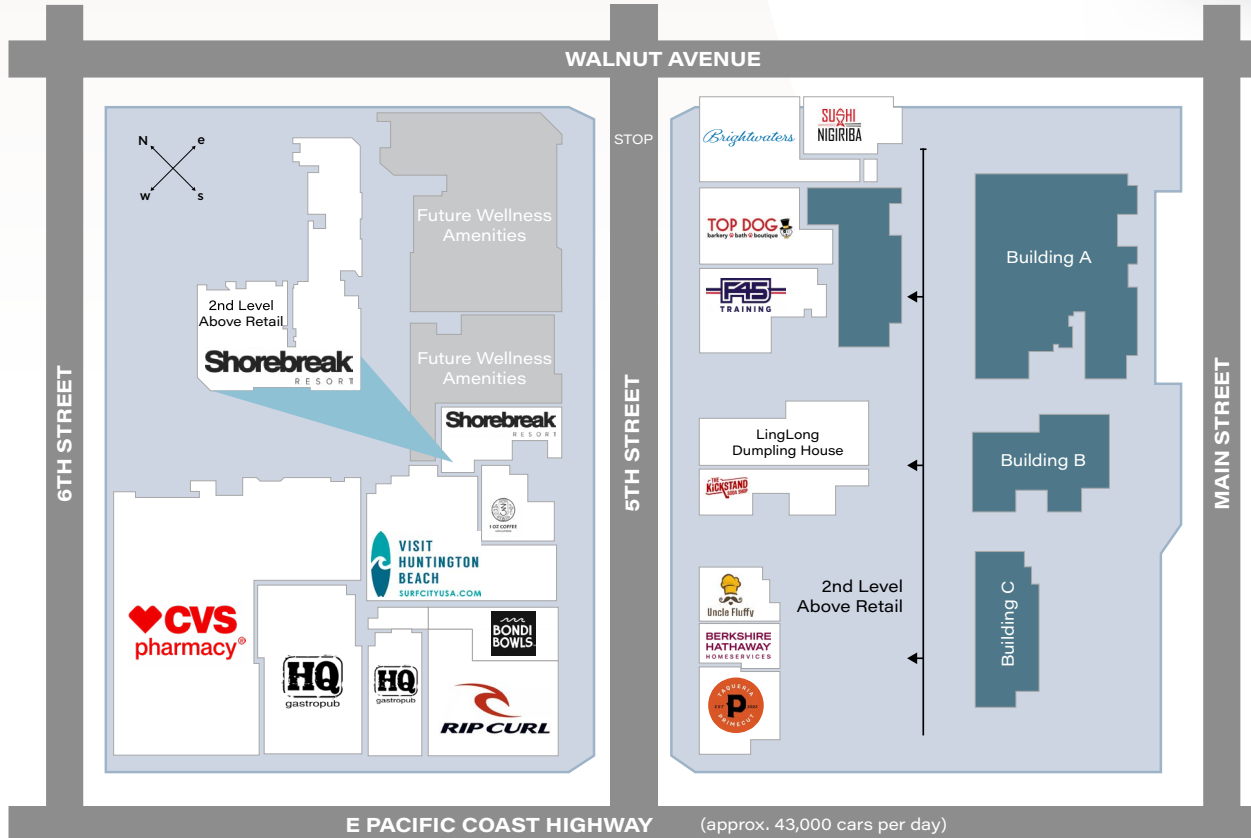


a Bold Vision
FOR YOUR NEW OFFICE



Your Best Work

STARTS HERE



BUILDING A

SUITE	TOTAL SF	DIVISIBLE TO
A-140	±2,619 SF	N/A
A-200	±12,159 SF	±2,000 SF
A-300	±10,753 SF	±2,000 SF

BUILDING B

SUITE	TOTAL SF	DIVISIBLE TO
B-200	±4,961 SF	N/A

BUILDING C

SUITE	TOTAL SF	DIVISIBLE TO
C-200	±3,836 SF	N/A

TOTAL AVAILABLE: ±34,328 SF

Building Connectivity



BUILDING A

BUILDING B

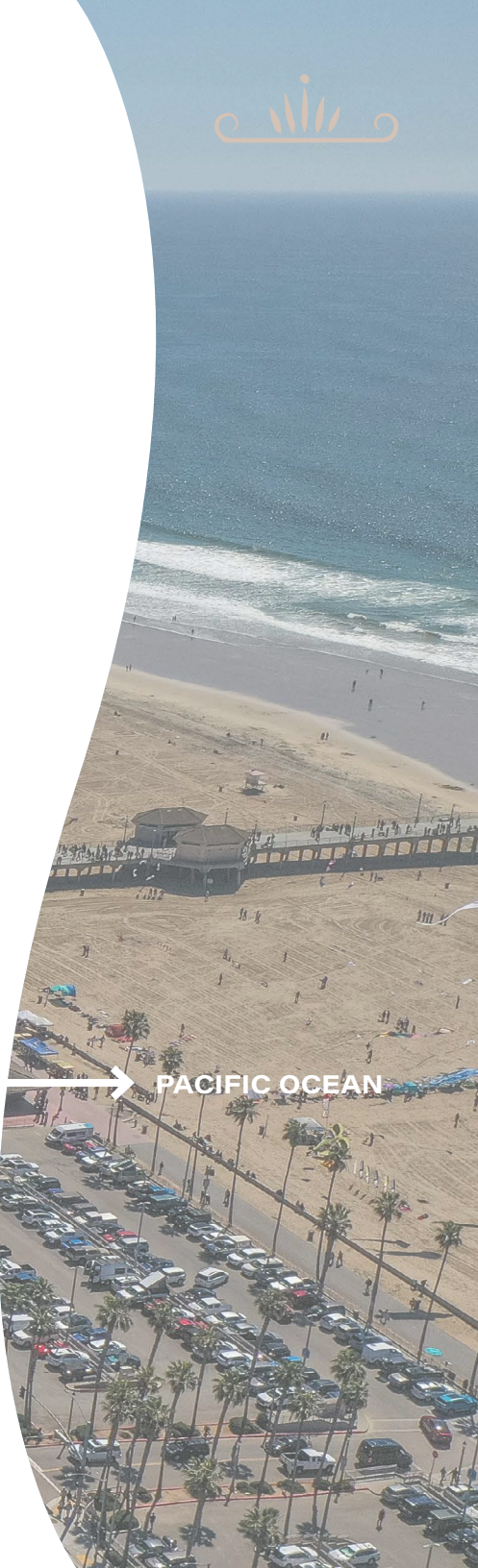
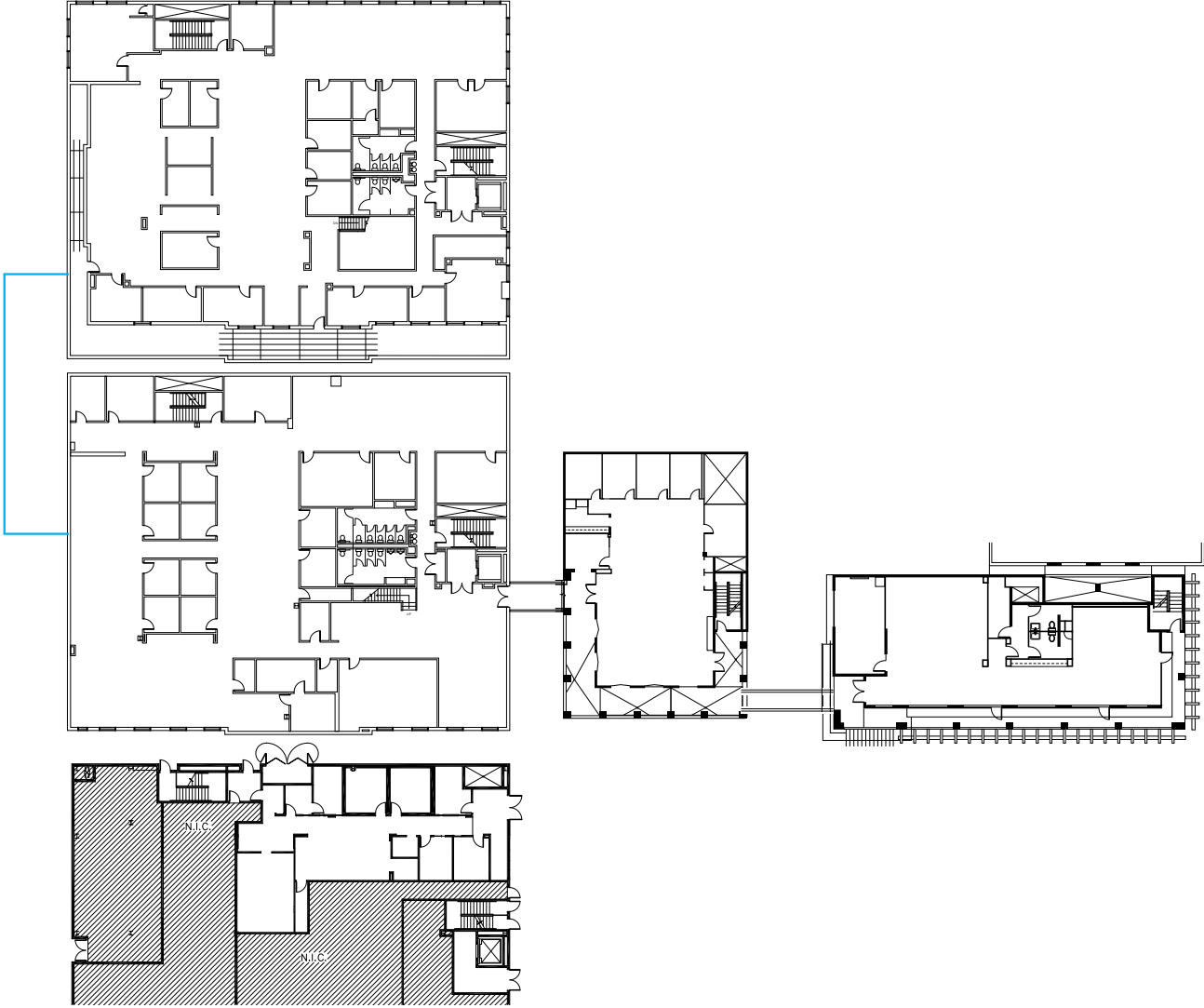
BUILDING C

THIRD FLOOR

Private elevator & internal stairwell connection

SECOND FLOOR

FIRST FLOOR



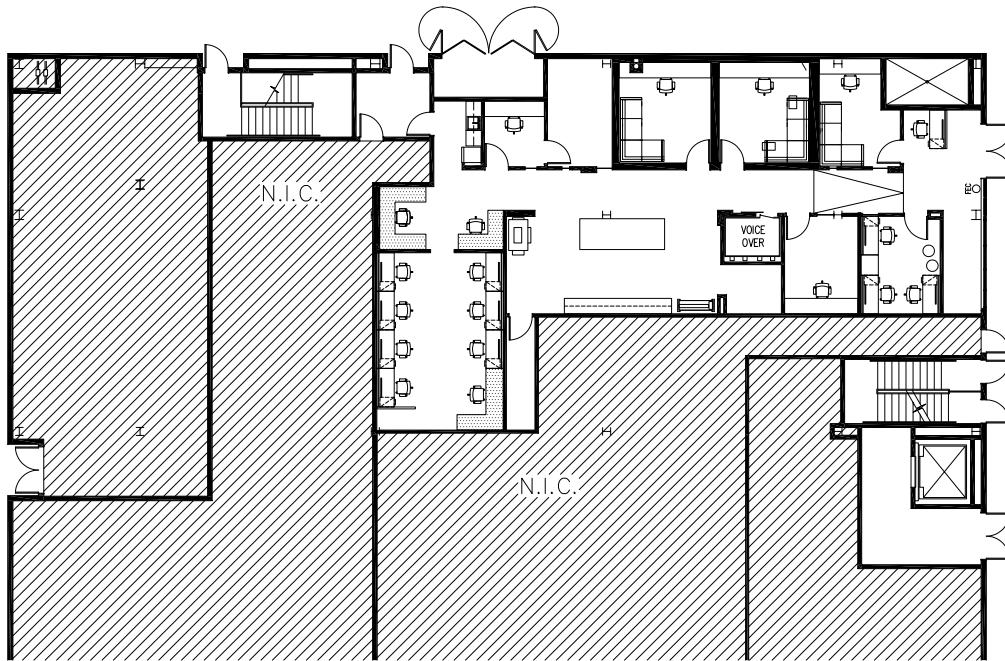
PACIFIC OCEAN

Floor Plans



Building A - First Floor (Suite 140)

±2,619 SF

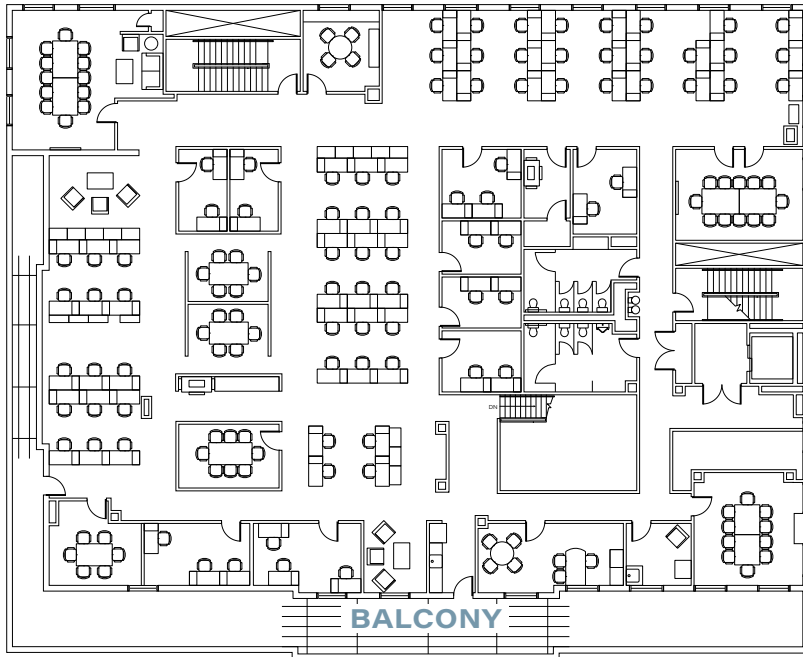


Floor Plans



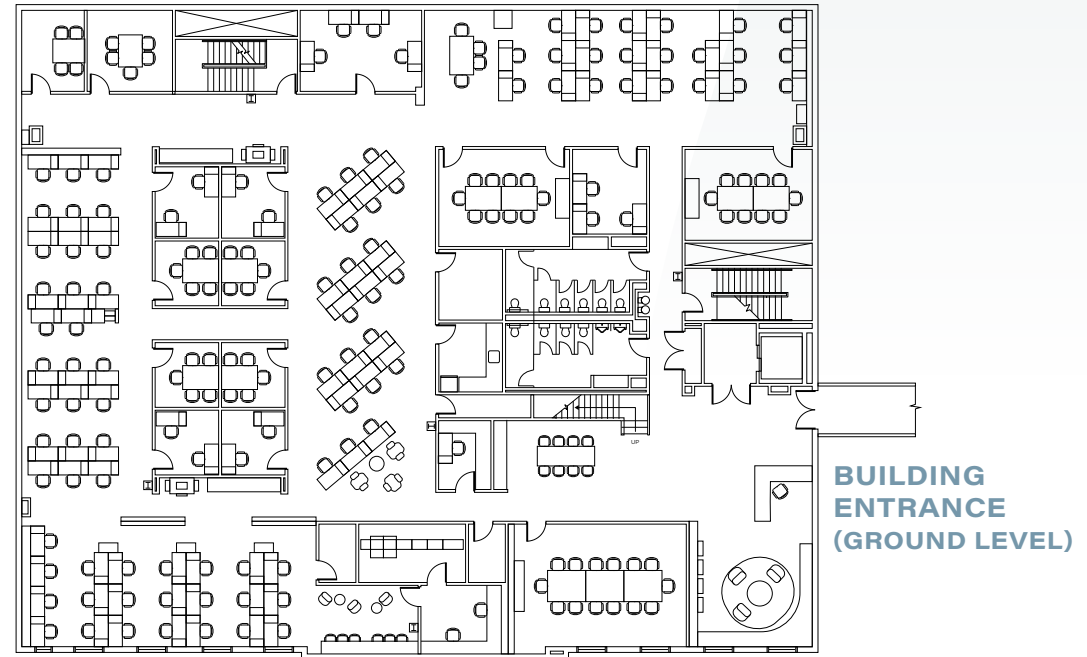
Building A - Third Floor

±2,000 - ±10,753 SF



Building A - Second Floor

±2,000 - ±12,159 SF

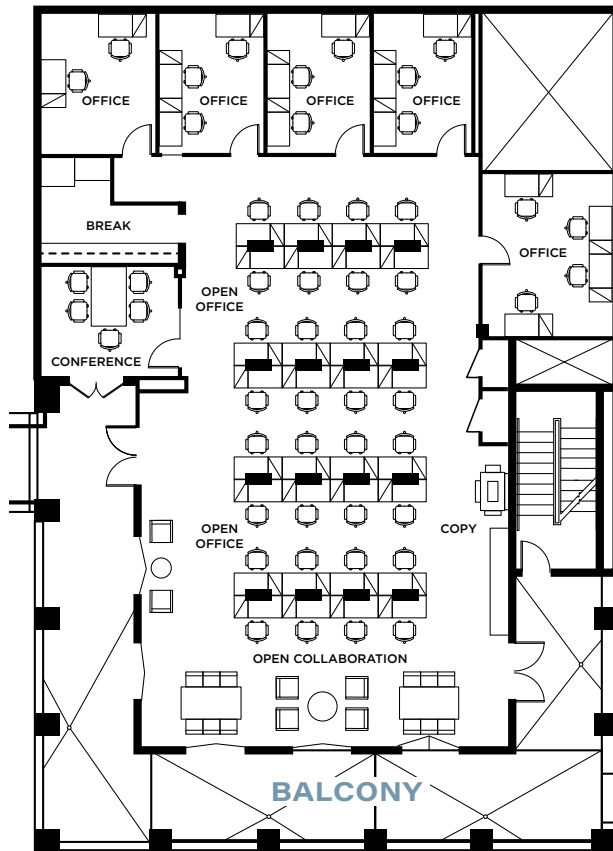


Floor Plans



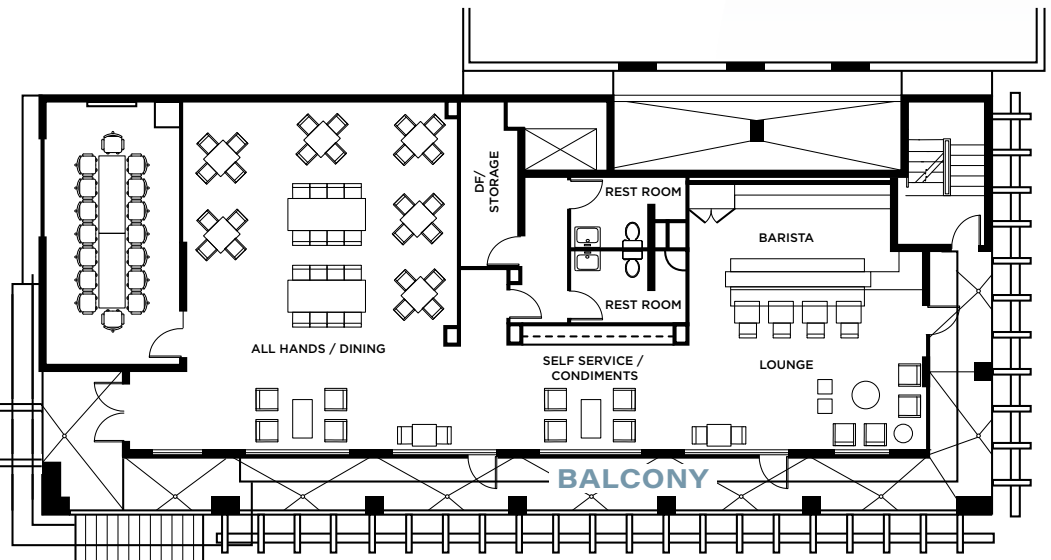
Building B - Second Floor

±4,961 SF



Building C - Second Floor

±3,836 SF



PACIFIC OCEAN

SIP, SHOP, STAY, *Surf*



The best part of your day doesn't have to wait til after hours. Whether you're picking up craft coffee before the all-hands, entertaining visiting clients over a waterfront lunch, or simply stepping away to feel the ocean breeze, all you need is your shades and a short walk to enjoy all the amenities at The Strand.



ON-SITE AMENITIES:



EVERYTHING YOU NEED

Right Here



PASÉA
HOTEL & SPA
HERITAGE COLLECTION
The Waterfront Beach Resort
at Hilton Hotel

SEPHORA
Bluegold
PANDORA
Pacific CITY
The Bungalow
Simmyz's
OLA
Ω

ROCKY MOUNTAIN CHOCOLATE FACTORY
American GOLF
BJ'S RESTAURANT BREWHOUSE

FRED'S MEXICAN CAFE
Wahoo's
Hurley
HANDL'S
HOMENADE ICE CREAM SINCE 1945

DUKE'S HUNTINGTON BEACH
SANDY'S Beach Shack

SANDBAR
KILLARNEY'S IRISH PUB
LONGBOARD

SUSHI NIGIRIBA
TOP DOG bakery * bath * boutique
Brightwaters
FAS TRAINING
TEQUERIA PRIMECUT
Uncle Fluffy

Shorebreak RESORT
1 OZ COFFEE
HQ gastropub
RIP CURL
CVS pharmacy

HUNTINGTON PIER

PCH 43,000 VPD

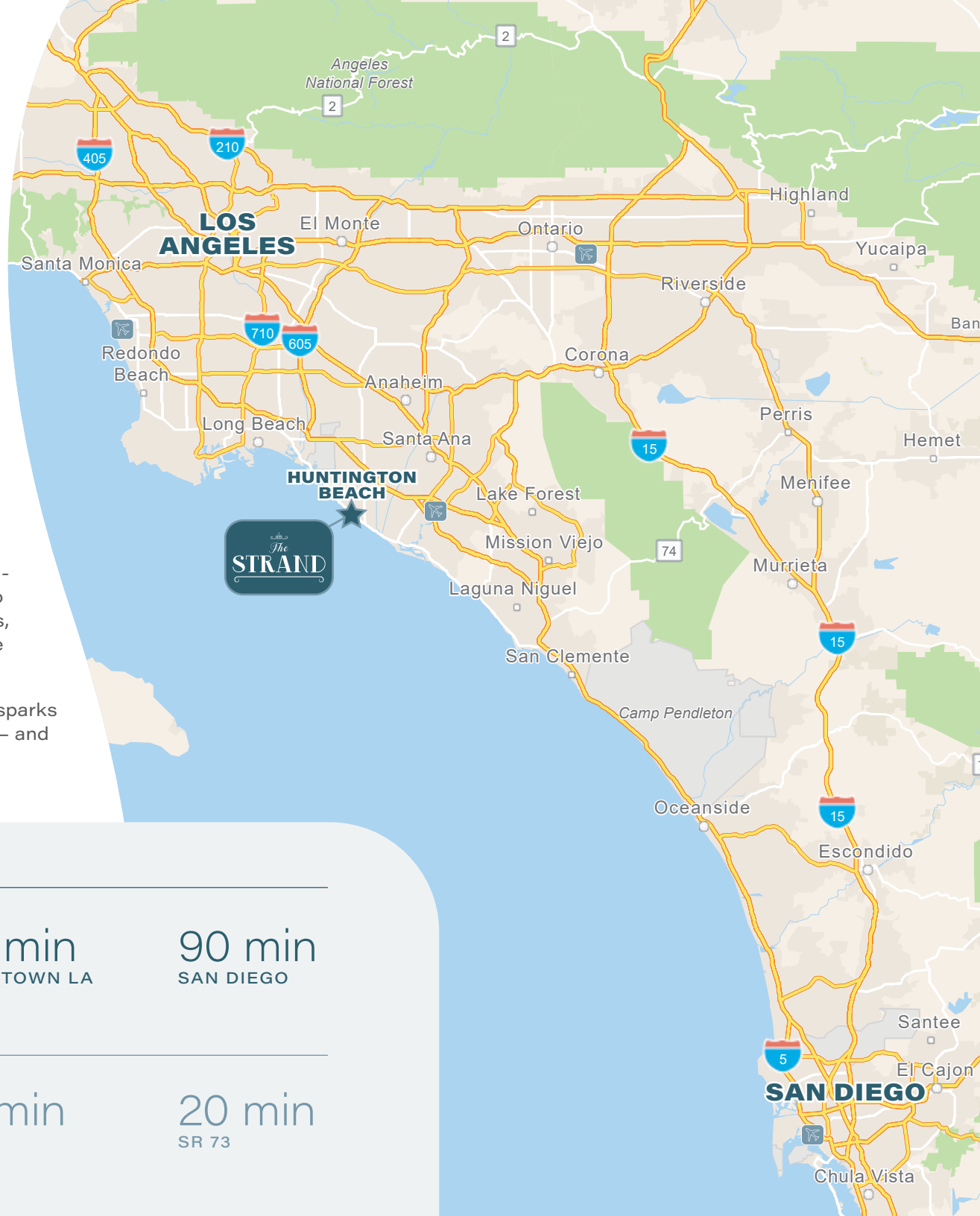


a Coastal Address

WITH REGIONAL REACH

Perfectly positioned in the heart of Surf City, USA, The Strand offers a coastal workplace with genuine lifestyle appeal and regional connectivity. Just one hour from Los Angeles and under two hours from San Diego, this beach-adjacent office keeps your team seamlessly connected to Southern California's major business centers and airports, without sacrificing the energy and character of one of the region's most sought-after coastal communities.

The Strand delivers a flagship address that turns heads, sparks conversation, and gives your team a reason to show up — and stay. The Strand is more than a location. It's a statement.



POINTS OF INTEREST

19 min
JOHN WAYNE AIRPORT

44 min
LAX

45 min
DOWNTOWN LA

90 min
SAN DIEGO

CONNECTIVITY

1 min
HIGHWAY 1

3 min
SR 39/BEACH BLVD

14 min
I-405

20 min
SR 73

JOHN HARTY

Executive Managing Director

949.372.4910

john.harty@cushwake.com

Lic.: 01121203

JASON WARD

Executive Managing Director

949.955.7640

jason.ward@cushwake.com

Lic.: 01802243

The
STRAND

©2026 Cushman & Wakefield. All rights reserved. The information contained in this communication is strictly confidential. This information has been obtained from sources believed to be reliable but has not been verified. NO WARRANTY OR REPRESENTATION, EXPRESS OR IMPLIED, IS MADE AS TO THE CONDITION OF THE PROPERTY (OR PROPERTIES) REFERENCED HEREIN OR AS TO THE ACCURACY OR COMPLETENESS OF THE INFORMATION CONTAINED HEREIN, AND SAME IS SUBMITTED SUBJECT TO ERRORS, OMISSIONS, CHANGE OF PRICE, RENTAL OR OTHER CONDITIONS, WITHDRAWAL WITHOUT NOTICE, AND TO ANY SPECIAL LISTING CONDITIONS IMPOSED BY THE PROPERTY OWNER(S). ANY PROJECTIONS, OPINIONS OR ESTIMATES ARE SUBJECT TO UNCERTAINTY AND DO NOT SIGNIFY CURRENT OR FUTURE PROPERTY PERFORMANCE. COE-PM-West-03.25.2026

**CUSHMAN &
WAKEFIELD**