



OFFERING SUMMARY

Available Space:	Suite A
Size Available:	954 Square Feet
Lease Rate:	\$1,300/month + utilities
Parking:	Free on-site
Building Size:	5,309 SF

PROPERTY HIGHLIGHTS

- Quiet, professional office park environment
- On-site landlord and property management
- Excellent access from Lake Avenue and I-25
- Plentiful on-site parking
- Ground-level accessibility
- Renovated restrooms



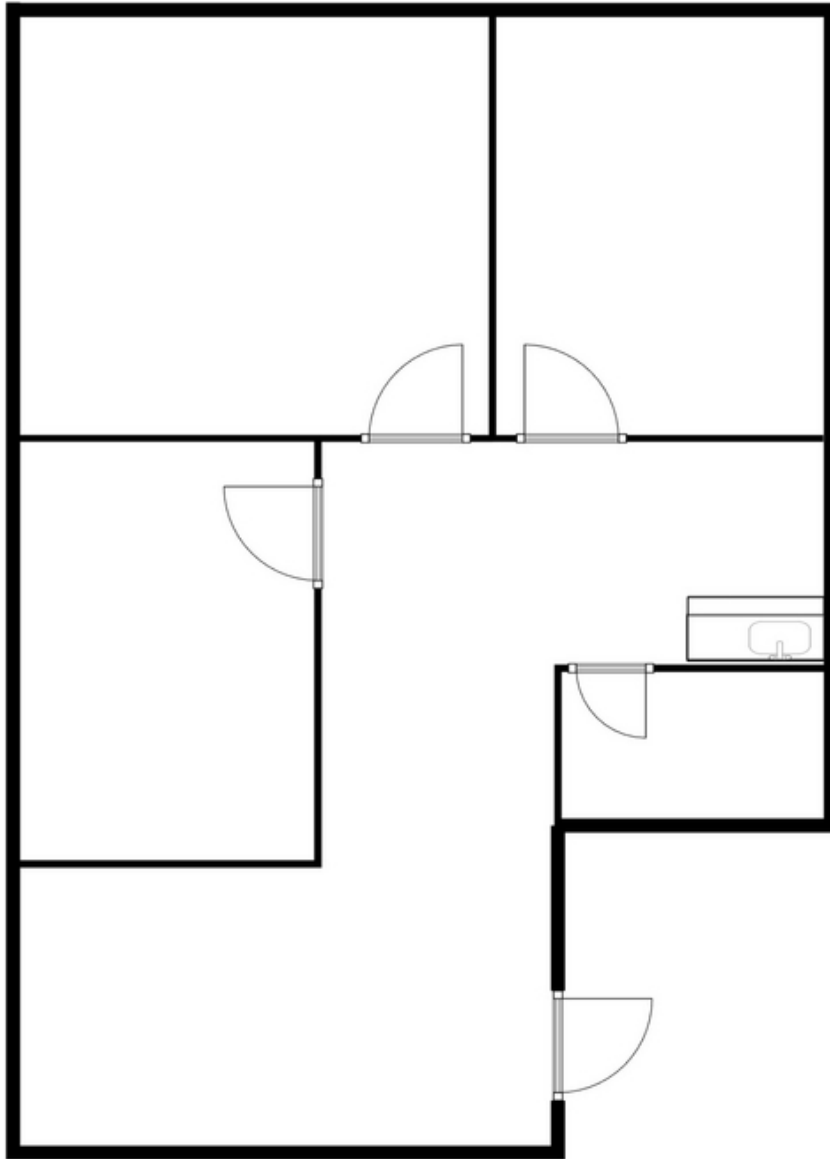
TIM AGEE
Tim@MiramontCRE.com
719.200.2735



COPPER TREE OFFICE PARK

Office Building For Lease

1229 Lake Plaza Dr Colorado Springs, CO 80906



TIM AGEE
Tim@MiramontCRE.com
719.200.2735



TIM AGEE
Tim@MiramontCRE.com
719.200.2735