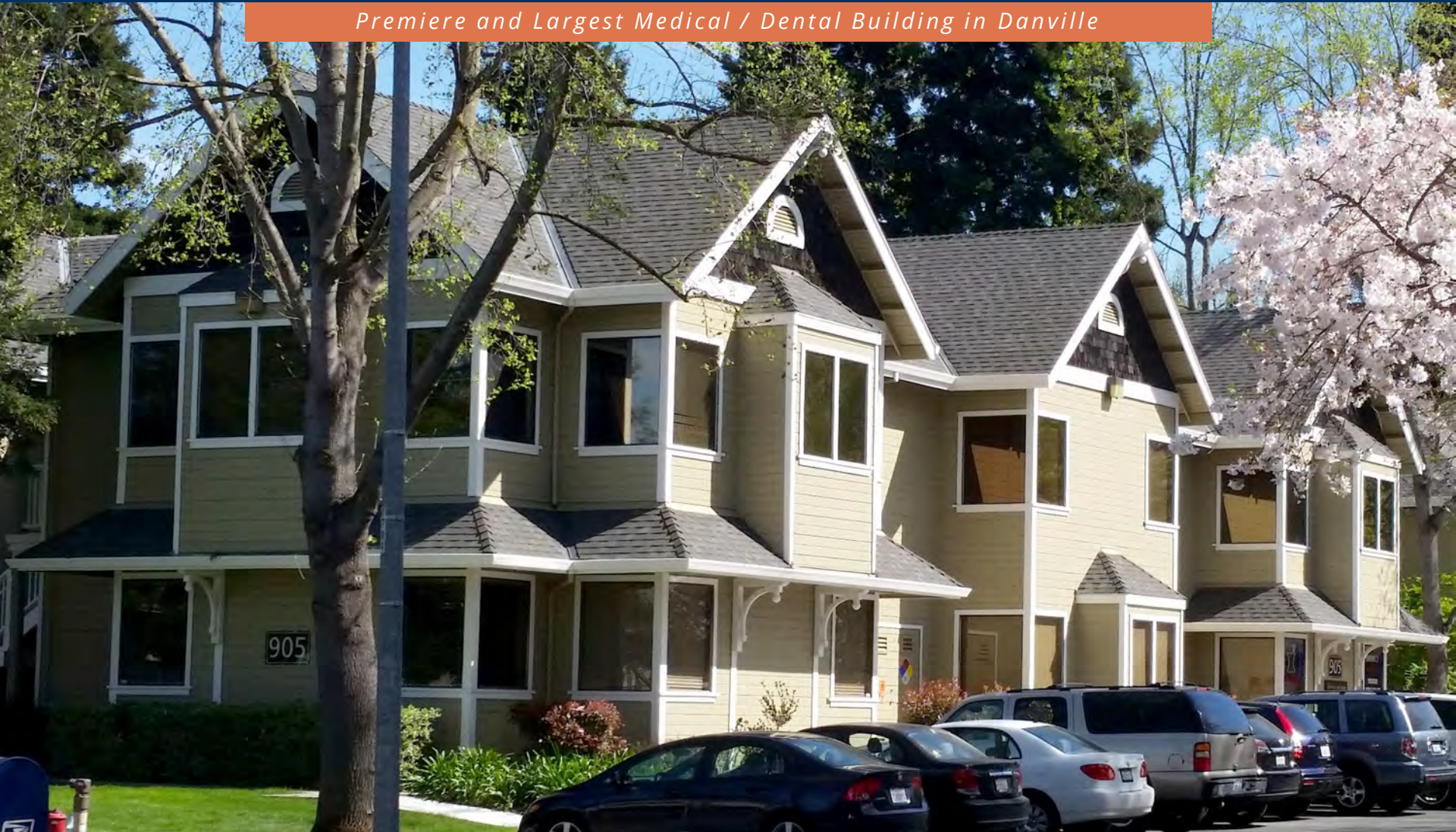


BAYSIDE REALTY PARTNERS PRESENTS

# The Victorian Medical Center

901-919 San Ramon Valley Boulevard, Danville

*Premiere and Largest Medical / Dental Building in Danville*



TRASK LEONARD  
President and CEO  
650.533.2591  
[tleonard@baysiderp.com](mailto:tleonard@baysiderp.com)  
DRE#01152101



CAROLINE DOYLE  
Senior Vice President  
650.722.1495  
[cdoyle@baysiderp.com](mailto:cdoyle@baysiderp.com)  
DRE#01906397



# The Victorian Medical Center

901-919 San Ramon Valley Boulevard, Danville

## LOCATION

- Medical/dental property with spaces ranging from 1,000 sf – 3,000 sf
- Health system tenants including PAMF and John Muir Health
- Professional office use allowed
- High-income area
- Easy access to I-680 / Sycamore Valley Road Exit

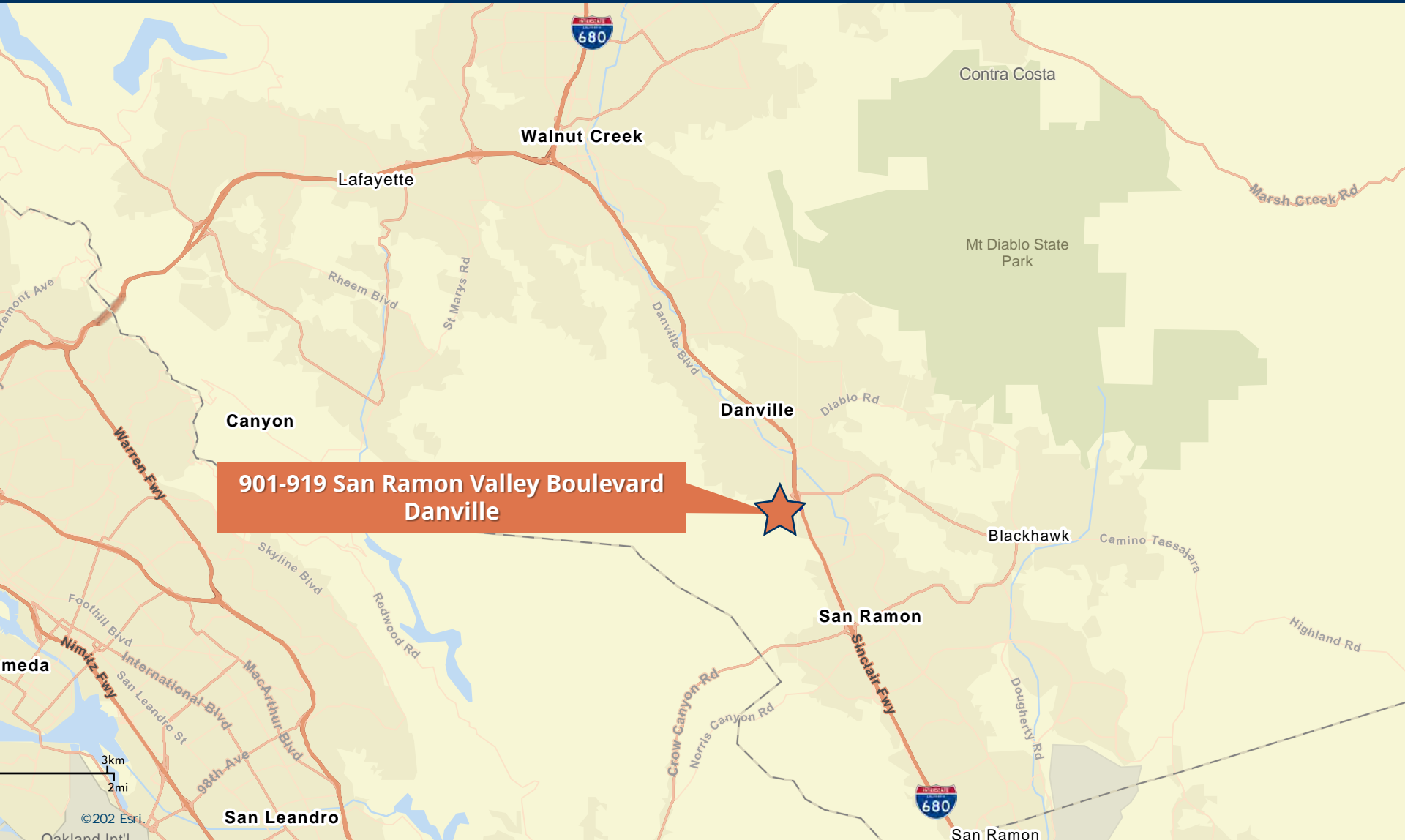


## BUILDING

- Attractive 2-story elevator-served medical office buildings
- On-site pharmacy and labs
- Major renovations completed, including landscaping, signage/building identity, paint and ADA access
- Local ownership and hands-on management

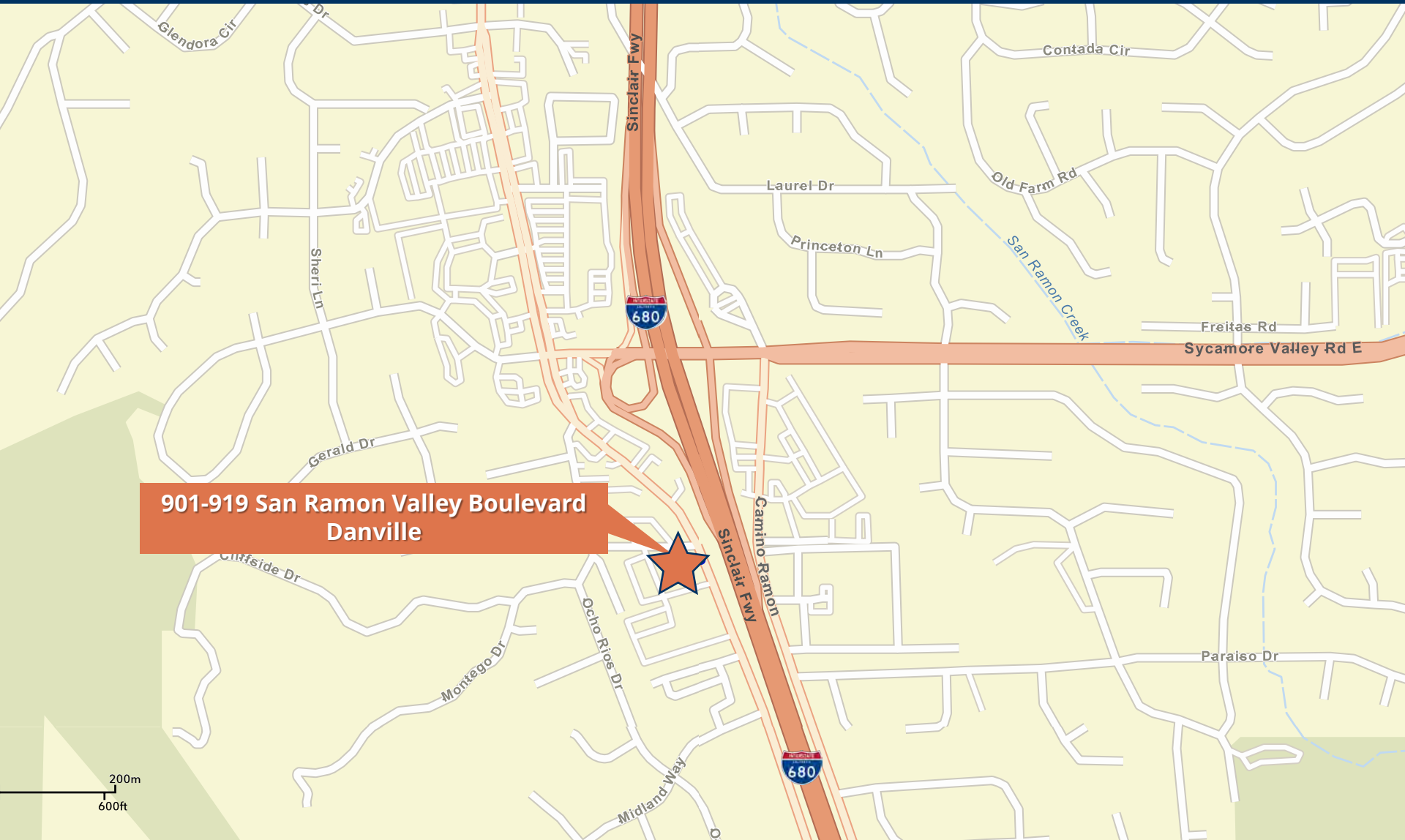
# The Victorian Medical Center

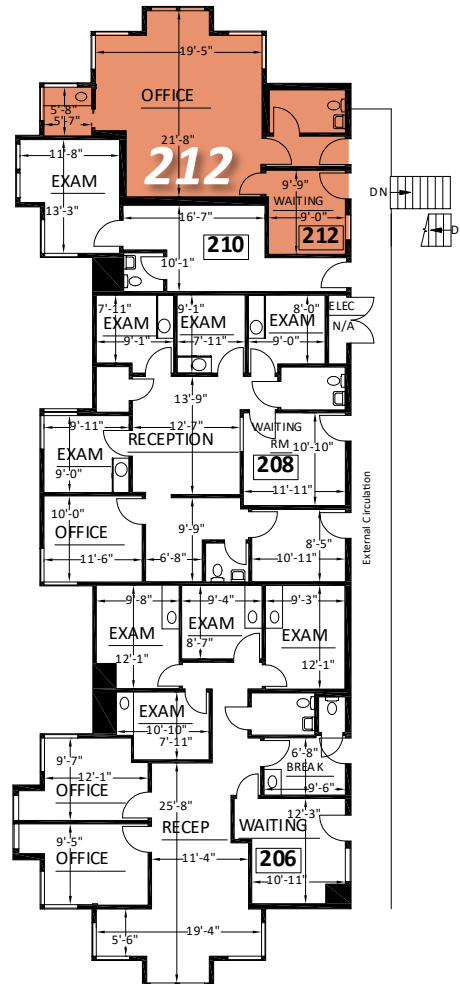
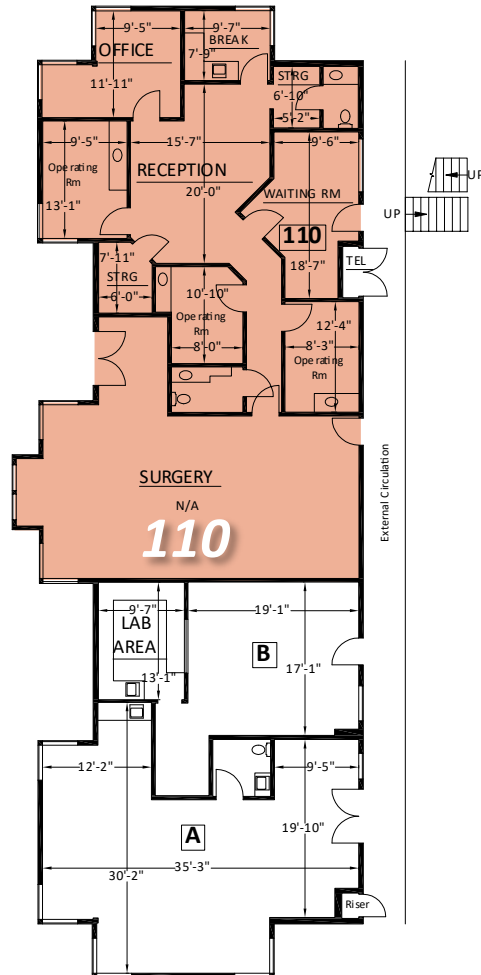
901-919 San Ramon Valley Boulevard, Danville



# The Victorian Medical Center

901-919 San Ramon Valley Boulevard, Danville





**Suite 905-110 2,313 RSF**

**Surgical center.** Waiting room, reception room, 3 restrooms, operating rooms, lab area, storage, breakroom, private office.

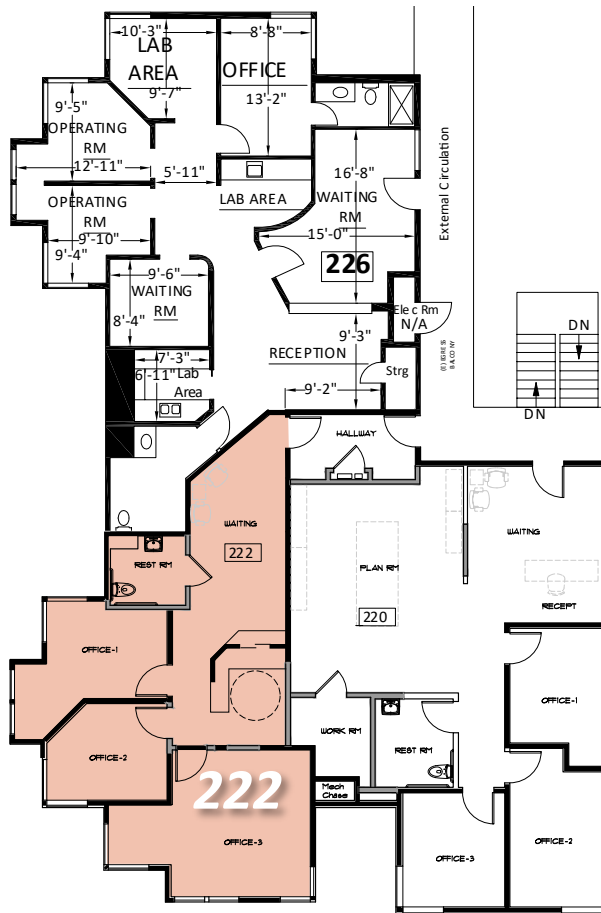
**Suite 905-212    682 RSF**

Private therapy suite/professional office. Waiting area, large open office, restroom, 2 entrances and small break area.

# The Victorian Medical Center

901-919 San Ramon Valley Boulevard, Danville

## Building 903 SECOND FLOOR



## Building 903

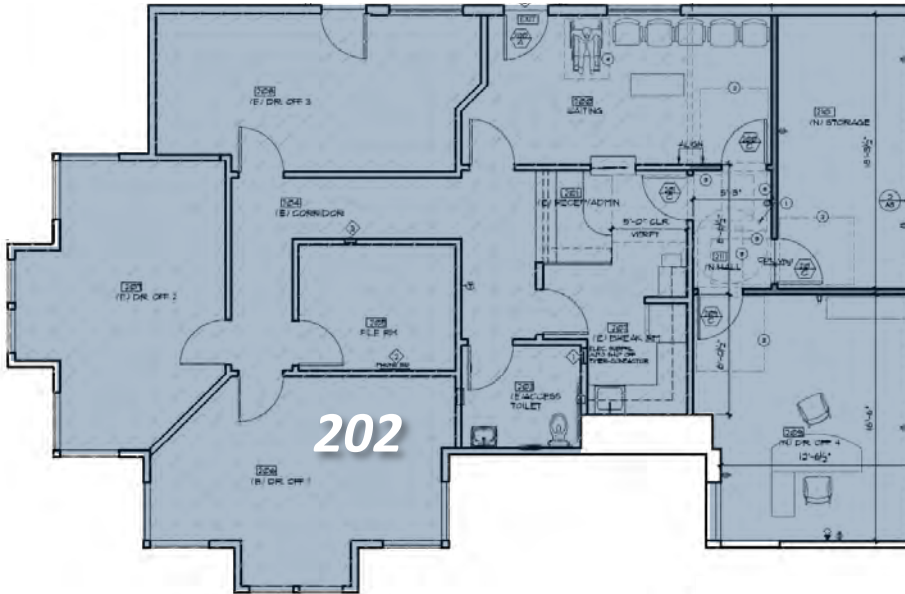
Suite 903-222 1,054 RSF

Waiting room/reception, 3 private offices,  
internal restroom

# The Victorian Medical Center

901-919 San Ramon Valley Boulevard, Danville

## Building 907 SECOND FLOOR



## Building 907

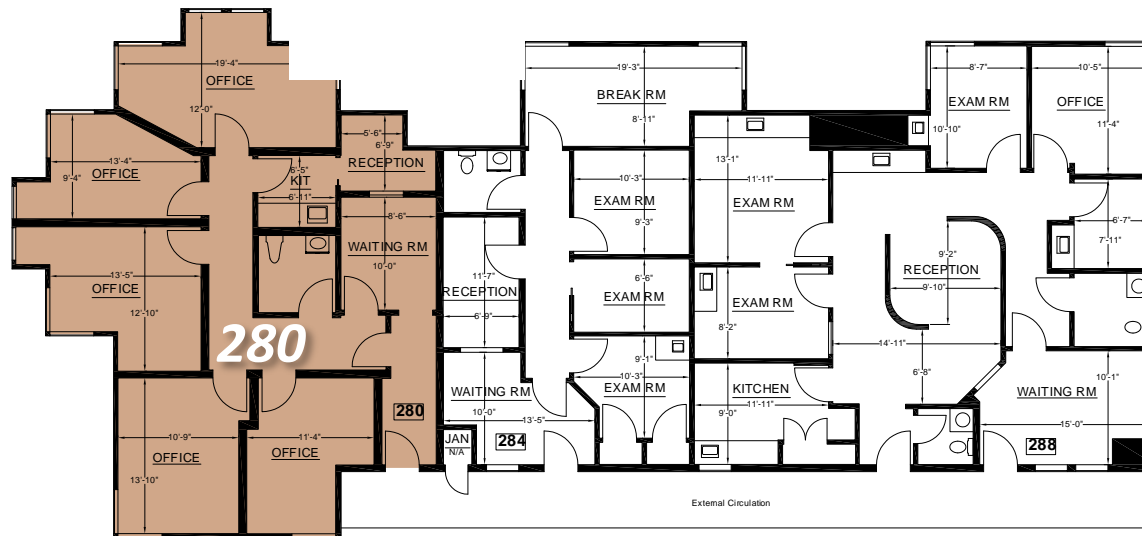
### Suite 907-202 2,004 RSF

Waiting room/reception, 5 private large offices, storage, internal restroom.  
Former use as private/professional office.  
Private/secondary exit.

# The Victorian Medical Center

901-919 San Ramon Valley Boulevard, Danville

## Building 913 SECOND FLOOR



## Building 913

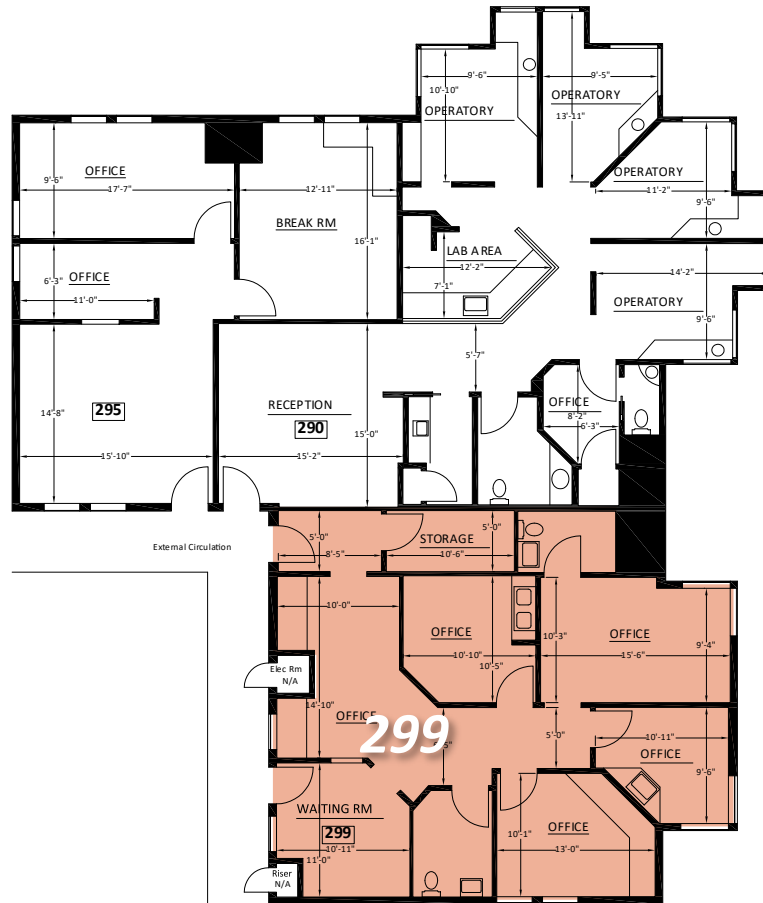
Suite 913-280 1,392 RSF

Waiting room/reception, 5 offices, kitchen,  
internal restroom

# The Victorian Medical Center

901-919 San Ramon Valley Boulevard, Danville

## Building 917 SECOND FLOOR



## Building 917

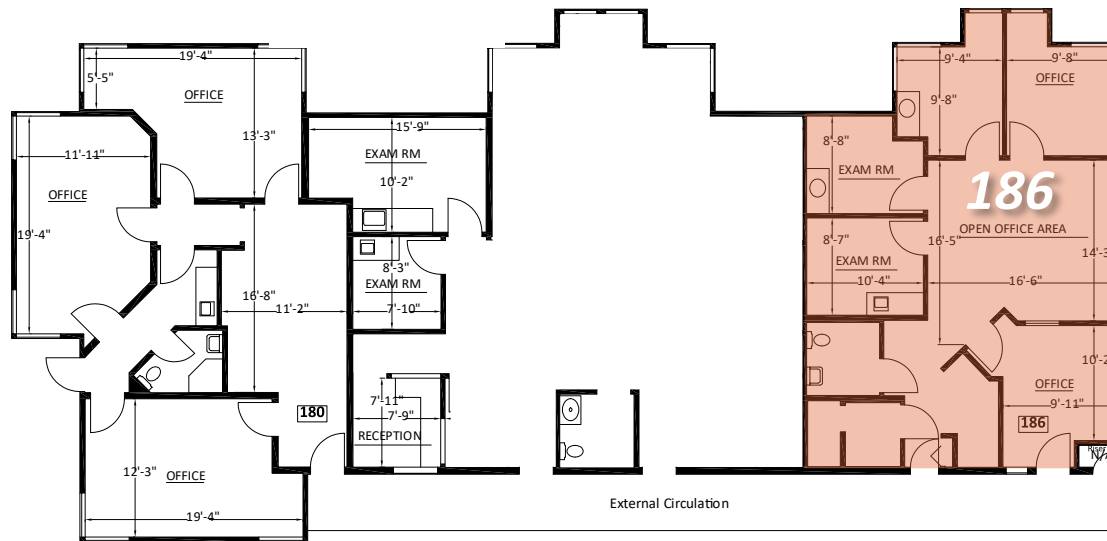
Suite 917-299 1,161 RSF

Waiting room/reception, 4 private offices, large open space, storage, 2 internal restrooms. Private/secondary exit.

# The Victorian Medical Center

901-919 San Ramon Valley Boulevard, Danville

## Building 913 FIRST FLOOR



## Building 913

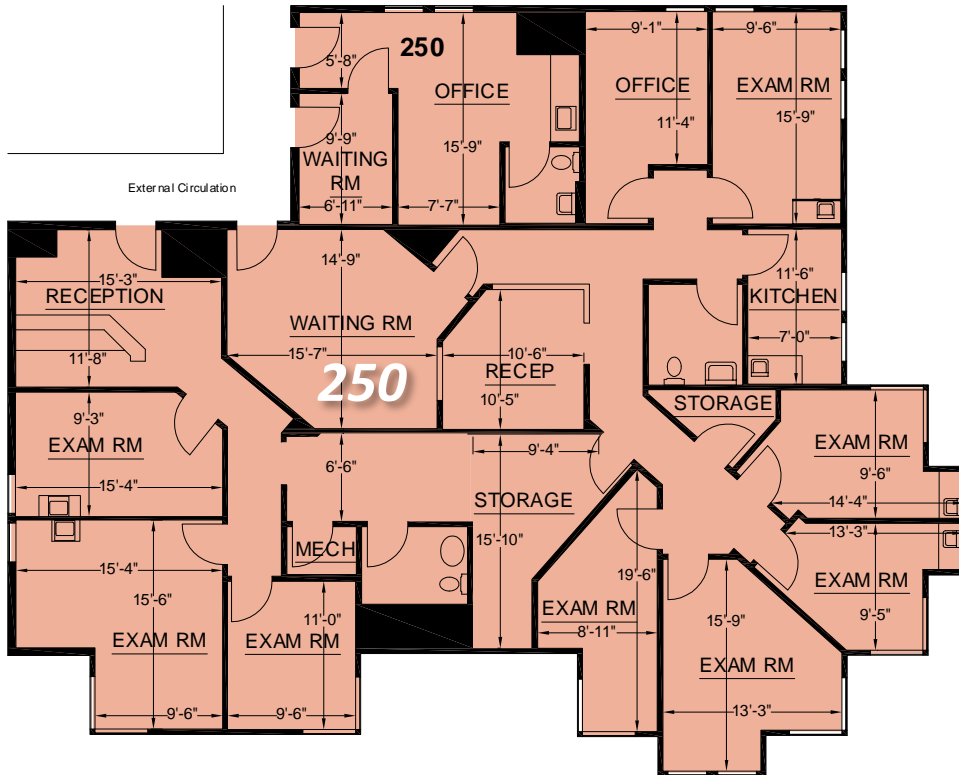
Suite 913-186 1,075 RSF

Waiting room/reception, 3 exam rooms, 1 office, internal restroom. Private/secondary exit.

# The Victorian Medical Center

901-919 San Ramon Valley Boulevard, Danville

## Building 919 SECOND FLOOR



## Building 919

Suite 250 3,149 RSF

Reception, waiting room, 2 offices, 8 exam rooms, 3 restrooms, storage, breakroom, 4 entrance/exits

# Meet Your Expert Team



TRASK LEONARD

President and CEO

650.533.2591

[tleonard@baysiderp.com](mailto:tleonard@baysiderp.com)

DRE#01152101



CAROLINE DOYLE

Senior Vice President

650.722.1495

[cdoyle@baysiderp.com](mailto:cdoyle@baysiderp.com)

DRE#01906397

# BAYSIDE REALTY PARTNERS

*The preeminent provider of management, leasing, construction management and accounting services for healthcare properties.*



## MARKET LEADER

- Leasing & Property Management
- Investment Sales
- Tenant Representation
- Construction Management
- Property Repositioning



## INFLUENTIAL NETWORK

- Institutional Investors
- Healthcare Systems and Healthcare Districts
- Physicians & Districts
- Private Investors



## DOMINANT FOOTPRINT

- 2 million SF leased & managed
  - 50+ MOB portfolio
  - 10,000-240,000 SF
  - 500,000 SF portfolio
- San Francisco's largest MOBs
- 950+ leases executed
- 500+ medical and dental tenants

**DOMINANT. EXPERT. INFLUENTIAL.**