

**CBRE**



# 1850 GATEWAY



For more information, please visit: [www.peninsulaland.com](http://www.peninsulaland.com)

1850 GATEWAY DRIVE | SAN MATEO, CA 94404

# TRANSIT

1850 Gateway sits right between San Francisco, San Jose and Silicon Valley in the 92/101 Corridor. The Mariner's Island Caltrain Shuttle stops just one block from the property and runs directly to Hillsdale Station.

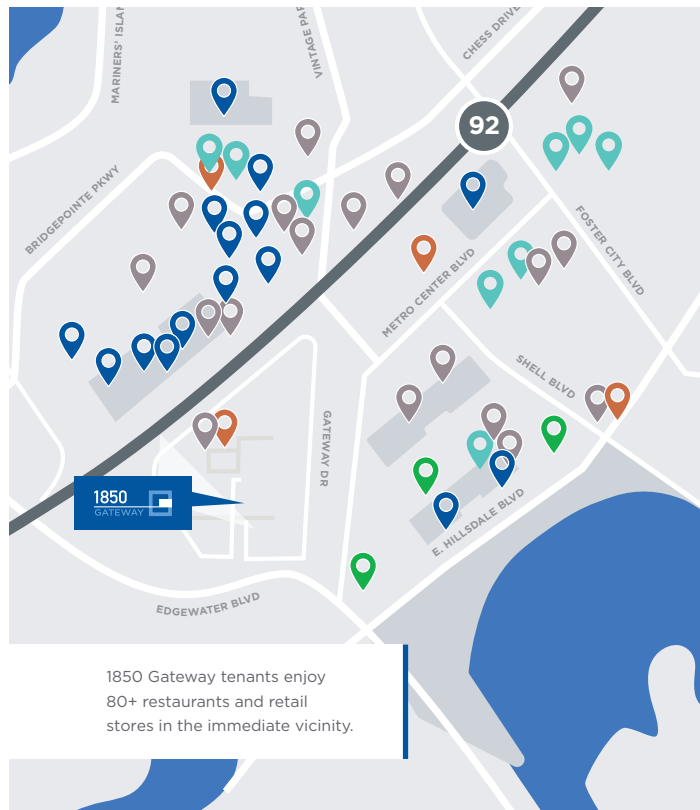
**MAJOR THOROUGHFARES**  
1 minute to Highways 92/101

**PUBLIC TRANSIT**  
6 minutes to Hayward Park Station  
8 minutes to Hillsdale Station  
10 minutes to Downtown San Mateo Station

**NEARBY REGIONS**  
20 minutes to Palo Alto  
30 minutes to San Francisco  
40 minutes to San Jose

**AIRPORTS**  
13 minutes to SFO Airport  
30 minutes to Oakland International Airport  
30 minutes to San Jose International Airport

# LOCAL AMENITIES



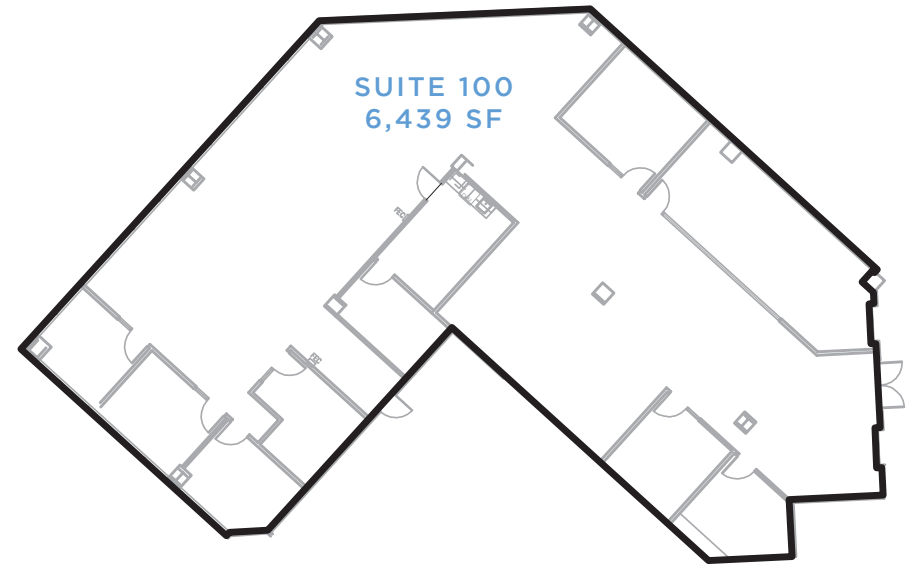
1850 Gateway tenants enjoy 80+ restaurants and retail stores in the immediate vicinity.

# SUITE 100 | ±6,439 RSF



## SUITE 100

- 3 Conference Rooms
- 5 Private Offices
- 1 Kitchen
- 1 Server Room
- 1 Open Work Space
- 1 Double Door Entry



**JOHN HELD**  
+1 650 577 2964  
john.held@cbre.com  
Lic. 01202476

**ALEX WILSON**  
+1 650 577 2923  
alex.wilson@cbre.com  
Lic. 01771333

**EVAN CHANG**  
+1 650 577 2962  
evan.chang@cbre.com  
Lic. 02010044

**ROGER FIELDS**  
+1 650 207 1610  
rfields@peninsulaland.com

**CBRE**



© 2020 CBRE, Inc. All rights reserved. This information has been obtained from sources believed reliable, but has not been verified for accuracy or completeness. You should conduct a careful, independent investigation of the property and verify all information. Any reliance on this information is solely at your own risk. CBRE and the CBRE logo are service marks of CBRE, Inc. All other marks displayed on this document are the property of their respective owners, and the use of such logos does not imply any affiliation with or endorsement of CBRE. Photos herein are the property of their respective owners. Use of these images without the express written consent of the owner is prohibited. PMSstudio \_ March2020