

AVAILABLE FOR LEASE

MEDICAL OFFICE SPACE
3,000± SF | \$2.60 SF/Month

1245 W Huntington Drive
Arcadia, CA 91007

For More Information

Robert G. Stover | Executive Vice President

Office: 626 204 1528
rstover@naicapital.com
CalDRE Lic #00688318

NAICapital
COMMERCIAL REAL ESTATE SERVICES, WORLDWIDE

1245 W Huntington Drive

Arcadia, California, 91007

Ground Floor Medical Office Space with Exam Rooms, Reception, Business Office, and Private Offices.

PROPERTY HIGHLIGHTS

- Suite 109: 3,000 ± RSF
- Patient Reception Room, Exam Rooms, and Private Offices
- Ground Floor Access
- Parking: 4 Reserved Spaces
- Surface Parking: Free

OFFERING SUMMARY

Lease Rate:	\$2.60 SF/month (MG)
Building Size:	18,118 SF
Available SF:	3,000 ± SF
Lot Size:	35,105 SF

DEMOGRAPHICS 1 Mi 3 Mi 5 Mi

Total Households	10,016	58,989	166,658
Total Population	27,800	168,880	494,113
Average HH Income	\$82,322	\$99,354	\$89,615

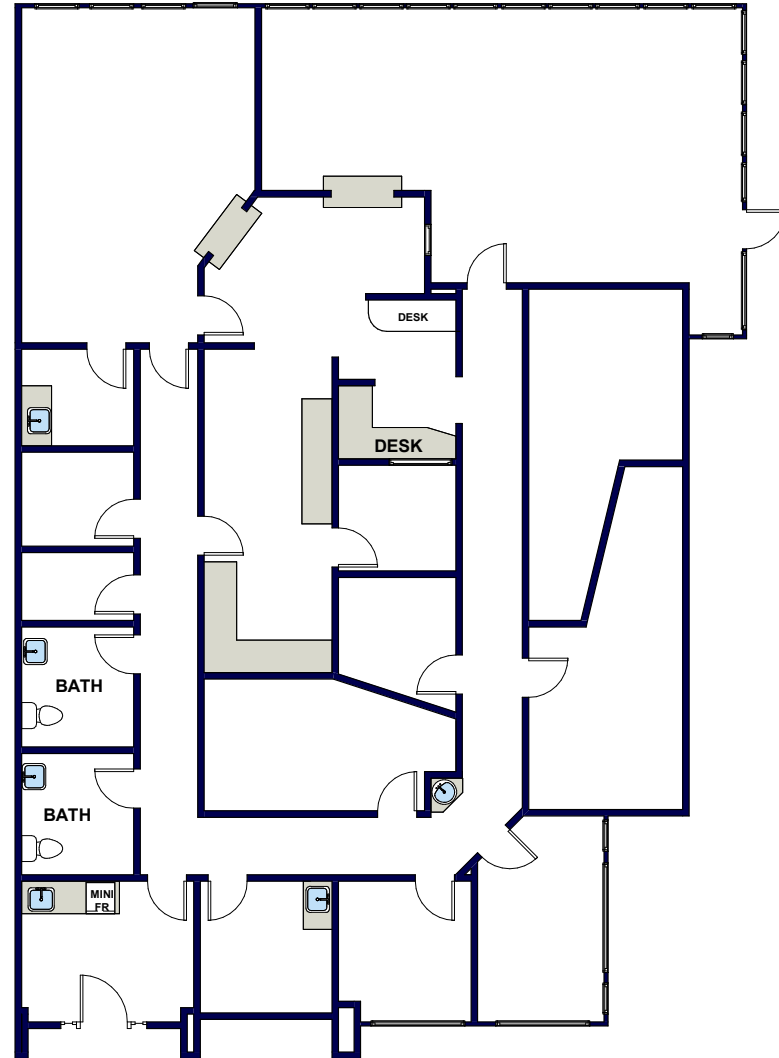
For More Information

Robert G. Stover | Executive Vice President

Office: 626 204 1528

rstover@naicapital.com

CalDRE Lic #00688318



FLOOR PLAN CREATED BY REST, INFORMATION DEEMED RELIABLE, BUT NOT GUARANTEED.
(626) 840-1717

NO WARRANTY, EXPRESS OR IMPLIED, IS MADE AS TO THE ACCURACY OF THE INFORMATION CONTAINED HEREIN. THIS INFORMATION IS SUBMITTED SUBJECT TO ERRORS, OMISSIONS, CHANGE OF PRICE, RENTAL OR OTHER CONDITIONS WITHDRAWAL WITHOUT NOTICE, AND IS SUBJECT TO ANY SPECIAL LISTING CONDITIONS IMPOSED BY OUR PRINCIPALS. COOPERATING BROKERS, BUYERS, TENANTS AND OTHER PARTIES WHO RECEIVE THIS DOCUMENT SHOULD NOT RELY ON IT, BUT SHOULD USE IT AS A STARTING POINT OF ANALYSIS, AND SHOULD INDEPENDENTLY CONFIRM THE ACCURACY OF THE INFORMATION CONTAINED HEREIN THROUGH A DUE DILIGENCE REVIEW OF THE BOOKS, RECORDS, FILES AND DOCUMENTS THAT CONSTITUTE RELIABLE SOURCES OF THE INFORMATION DESCRIBED HEREIN. LOGOS ARE FOR IDENTIFICATION PURPOSES ONLY AND MAY BE TRADEMARKS OF THEIR RESPECTIVE COMPANIES. NAI CAPITAL, INC. CAL DRE LIC. #02130474