

# FOR LEASE

## 2900 Whipple Avenue Redwood City, California



### BUILDING

- Two-story multi-tenant medical office building
- Rare opportunity located adjacent to Sequoia Hospital
- Excellent co-tenancies
- Recently upgraded common areas
- Located in residential neighborhood

### OPPORTUNITY

- Two spaces available
- Suite 130 — 3,399 rsf
- Suite 200 — 1,419 rsf

### PARKING

- Plenty of on-grade parking



**For More  
Information  
Contact  
Bayside  
Realty  
Partners**

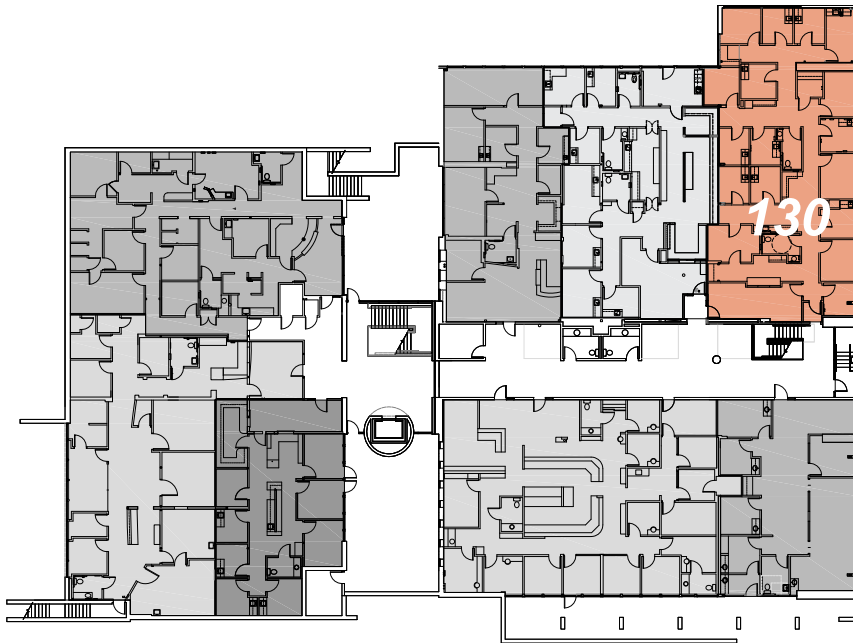
**Bayside Realty Partners**  
1761 Laurel Street  
San Carlos, CA 94070  
[www.baysiderp.com](http://www.baysiderp.com)  
CA Broker# 00868528

**Trask Leonard**  
(650) 949-0700  
[tleonard@baysiderp.com](mailto:tleonard@baysiderp.com)  
DRE# 01152101

**Ian Calvello**  
(650) 282-4621  
[icalvello@baysiderp.com](mailto:icalvello@baysiderp.com)  
DRE# 01713240

# FOR LEASE

2900 Whipple Avenue  
Redwood City, California



## FLOORPLAN FIRST FLOOR

Suite 130 — 3,399 rsf

2 large procedure rooms, 5 exam rooms, 5 offices, 2 restrooms, lab, break area, storage, waiting room with capacity for at least 16 people



## FLOORPLAN SECOND FLOOR

Suite 200 — 1,419 rsf

1 large procedure/exam room, 1 additional exam room, lab area with sink, 1 large private office, 1 consultation room, large admin area/waiting room and a private restroom

**For More  
Information  
Contact  
Bayside  
Realty  
Partners**

**Bayside Realty Partners**  
1761 Laurel Street  
San Carlos, CA 94070  
[www.baysiderp.com](http://www.baysiderp.com)  
CA Broker# 00868528

**Trask Leonard**  
(650) 949-0700  
[tleonard@baysiderp.com](mailto:tleonard@baysiderp.com)  
DRE# 01152101

**Ian Calvello**  
(650) 282-4621  
[icalvello@baysiderp.com](mailto:icalvello@baysiderp.com)  
DRE# 01713240