

885 BRYANT

SAN FRANCISCO | CA



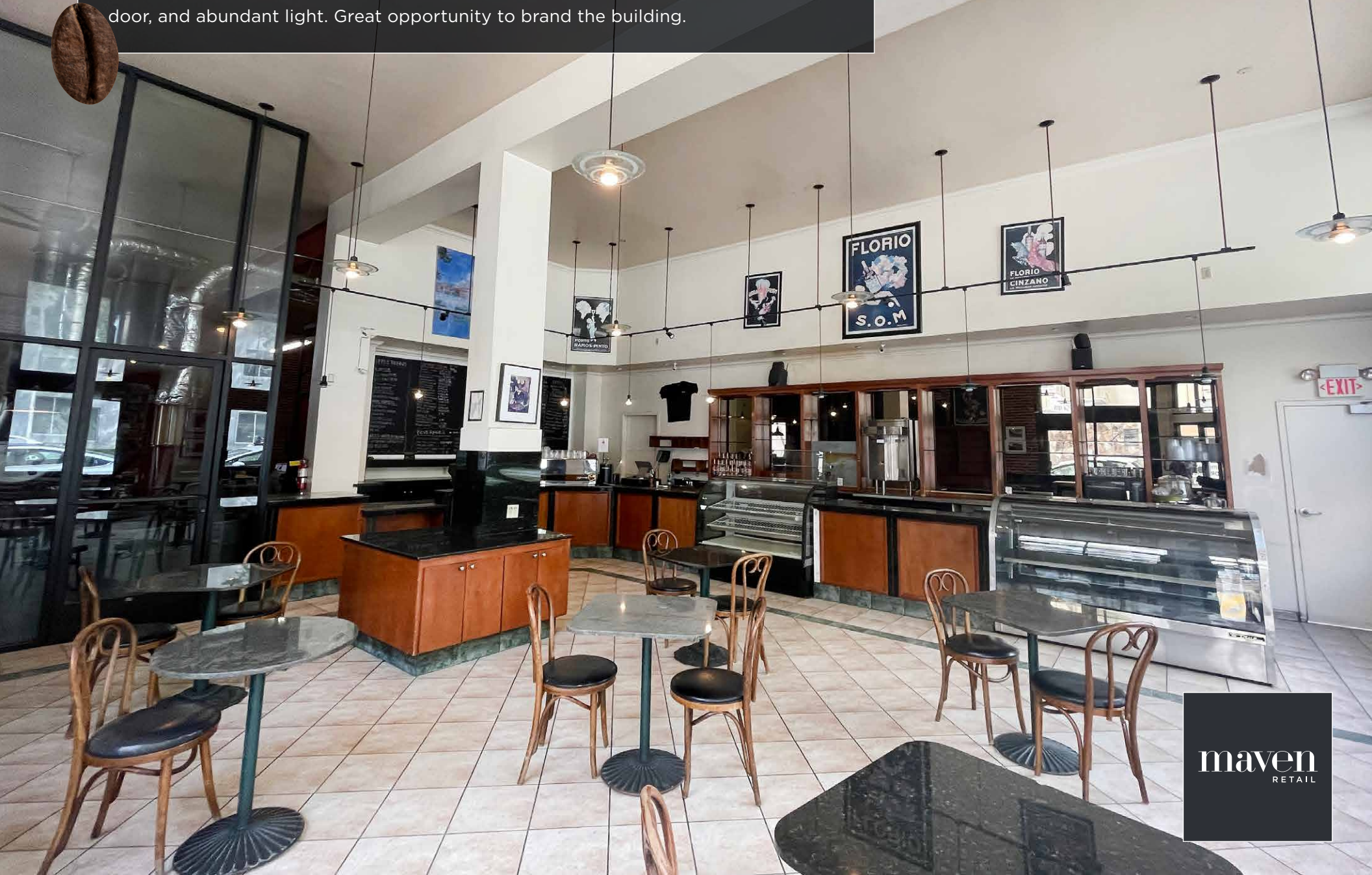
FEATURES

HIGHLIGHTS

- +/- 4,400 SF
- Brick & Timber Building in the heart of SOMA
- Wholesale/Production Area +
- Great location across from 850 Bryant / SFPD
- Furniture, fixtures & equipment in place
- Roll-up loading door / easy access from alley
- Corner entrance
- Ability to brand building
- Sliding glass doors & windows
- Full kitchen with Type II Hood
- High ceilings with abundant natural light
- 400 AMP / 3-Phase Power
- Bonus mezzanine space
- Additional second floor office space may be available later
- Easy on/off freeway access
- Close to BART/MUNI
- Monthly Parking nearby

Wholesale/Production Area + Retail

Rare opportunity to lease a fully fixtured roastery and café in San Francisco. Equipped with a 75-Kilo Probat Roaster, this space offers a coffee company the opportunity to roast in back and serve from the highly visible retail front. This beautiful brick-and-timber space features vast ceilings, plumbing and electrical infrastructure, a roll-up door, and abundant light. Great opportunity to brand the building.



885 BRYANT





885 BRYANT

Furniture, Fixtures & Equipment (For Tenant's Use During Tenancy)

Kitchen

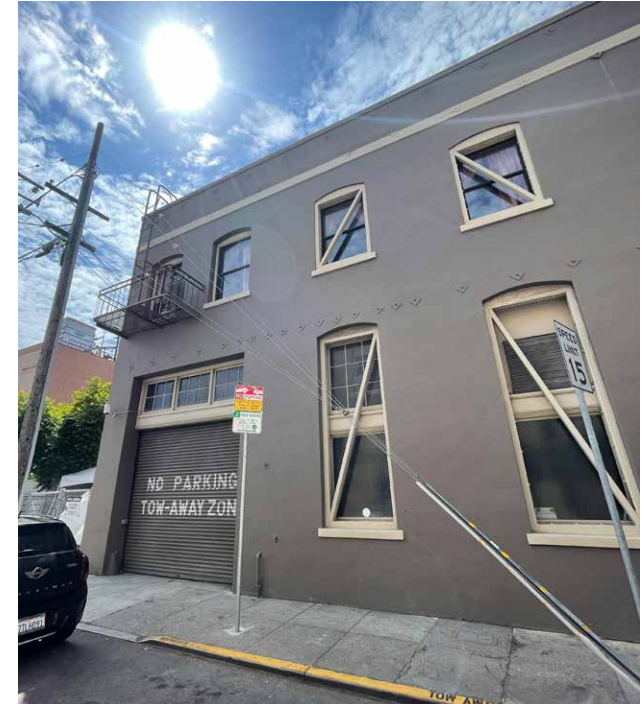
- 3- prep tables
- Ice machine
- 1- safe
- Southbend oven 6 burner
- Meat slicer
- Vitamix blender grill
- 3-door Traulsen refrigerator
- 2-door Traulsen refrigerator
- 4-level chefs rack
- Hand washing sink
- 3 compartment sink
- Soup warmer

Front of House

- Granite tables / Chairs
- 2- deli cases/pastry
- 3-compartment sink
- Microwave
- 3-compartment undercounter refrigerator
- 4-compartment undercounter refrigerator
- Clover cash register
- Bar trough
- Coffee Brewer
- La Spaziale espresso machine
- Hand sink
- Large chalkboard menu
- Two Simonelli Grinders
- Under counter storage
- Granite bar and seating
- Pastry display case

Wholesale/Production Area

- Working tables
- Compressor
- Sealer bag
- 2 Ditting grinders
- Loft & Mezzanine Storage
- Spotlights
- Probat 75 Kilo roaster



885 BRYANT



CHASE CENTER

ORACLE PARK
HOME OF THE SAN FRANCISCO GIANTS

MISSION BAY

KAISER PERMANENTE MISSION BAY



CHINA BASIN



3RD STREET

4TH STREET

5TH STREET

BRANNAN STREET

6TH STREET

SOMA

ADOBE

NIKU STEAKHOUSE

FLOWER MARKET

MARS BAR & RESTAURANT

ZYNGA



885 BRYANT

PIZZA SQUARED

REI

AIRBNB HQ

HALL OF JUSTICE

BRYANT STREET

BELLOTA

EQ3

VICTORIA MANALO DRAVES PARK

TRADER JOE'S

FITNESS SF



NIKU STEAKHOUSE



THE GREAT NORTHERN



EQ3

SOMA NEIGHBORHOOD



FITNESS SF



REI



ROOM & BOARD



FLOWER MART



HALL OF JUSTICE



BELLOTA

885 BRYANT

SAN FRANCISCO | CALIFORNIA

maven
RETAIL

JOAN RUYLE

415.404.7313

joan@mavenproperties.com

DRE #02006025

SANTINO DEROSE

415.404.7337

sd@mavenproperties.com

DRE #01338326

NOTICE: This information has been secured from sources we believe to be reliable but we make no representations, warranties, express or implied, as to the accuracy of the information. Listing broker has been given enough information to provide only a preliminary interest in the property. The materials are not to be considered fact. The information contained herein is not a substitute for thorough due diligence investigation. References to square footage, zoning, use, or age are approximate. Please contact the San Francisco Planning Department to verify zoning at (415) 558-6378, as neither broker or landlord represent that this space is suitable for your use. Tenant or Buyer must verify

466 Green Street Suite #203 | San Francisco, CA 94133 | 415.781.7700