

A photograph of the Warner Office Plaza building. The building features a red upper section and a white lower section with large, curved architectural elements. A tall palm tree stands in front of the building. In the foreground, there are green bushes and a small purple flower. The address "8840" is mounted on the red wall.

8840

**WARNER  
OFFICE PLAZA**

8840 WARNER AVE, FOUNTAIN VALLEY, CA

**CBRE**





# Building Highlights



Great freeway access



Free and easy covered parking



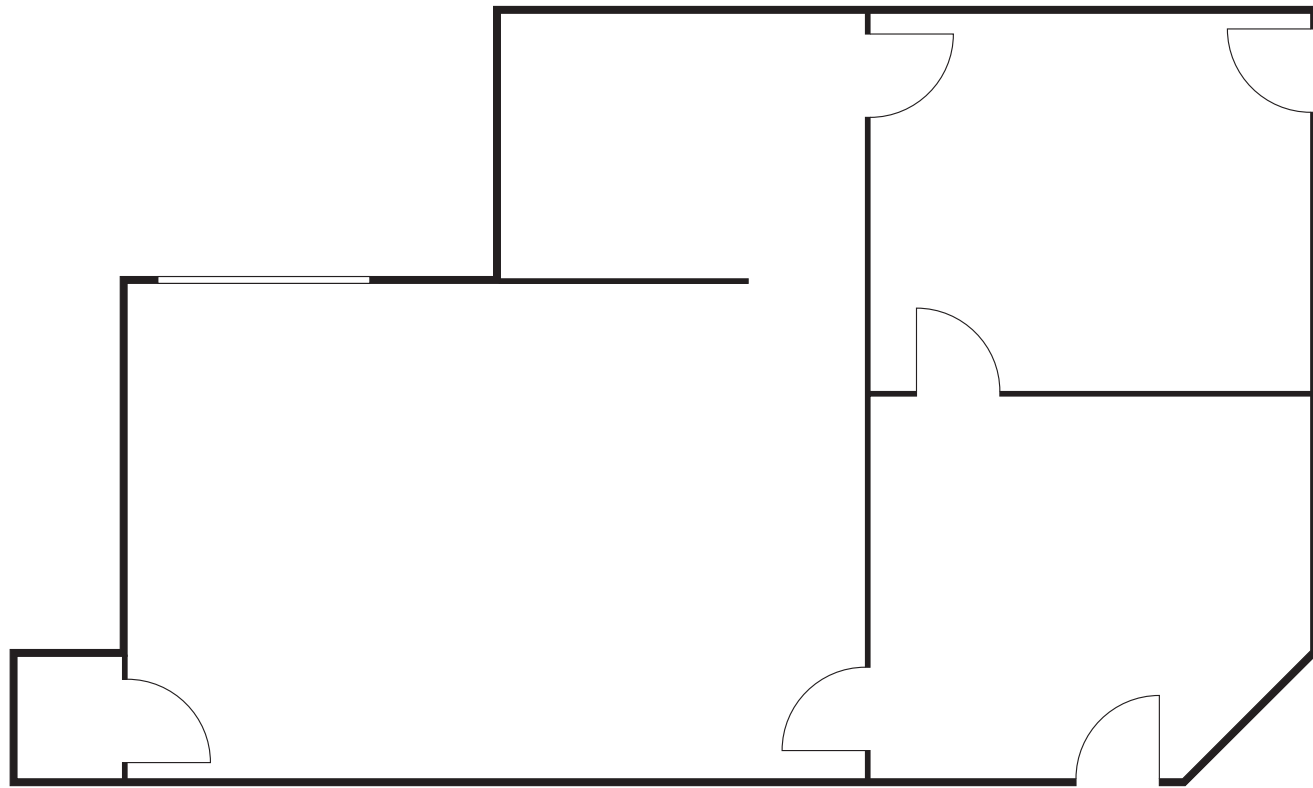
Great walk to food options



Elevator served

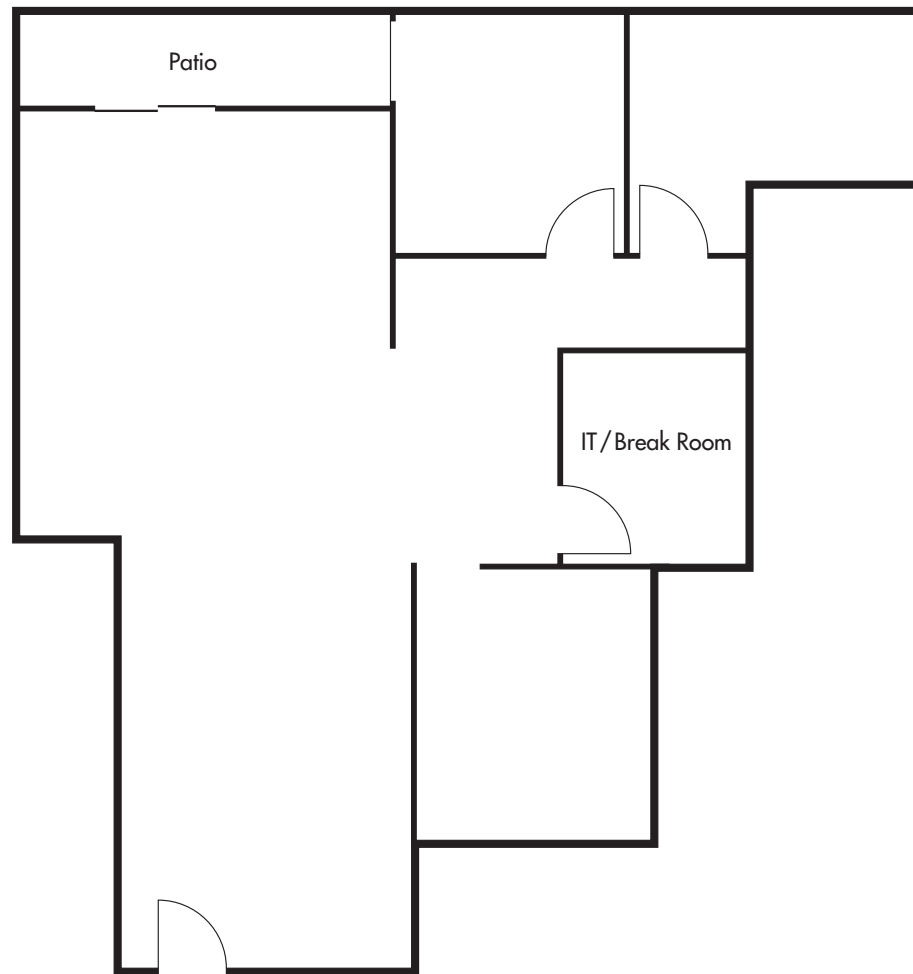
# Suite 101

799 RSF



# Suite 207

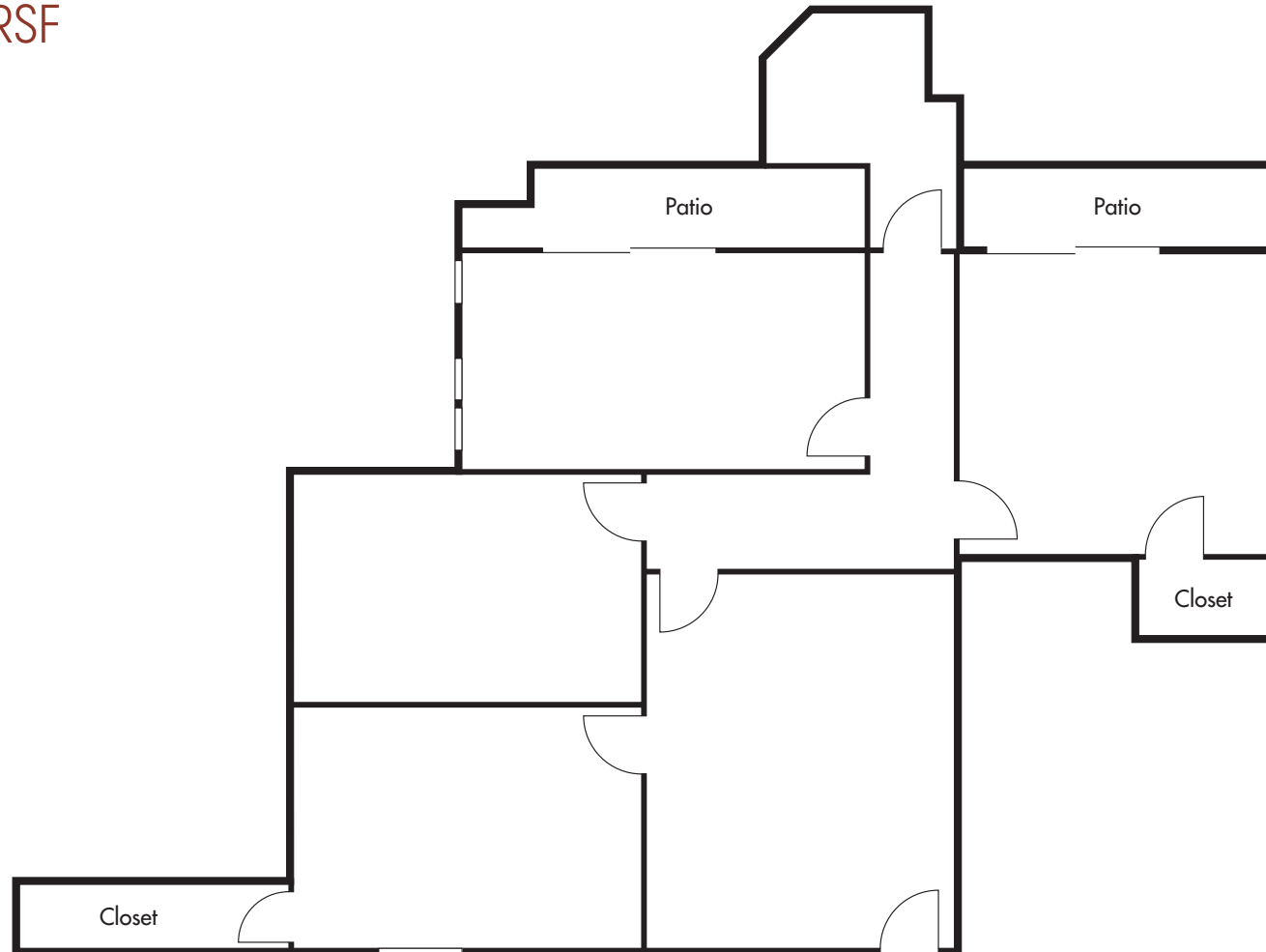
1,557 RSF





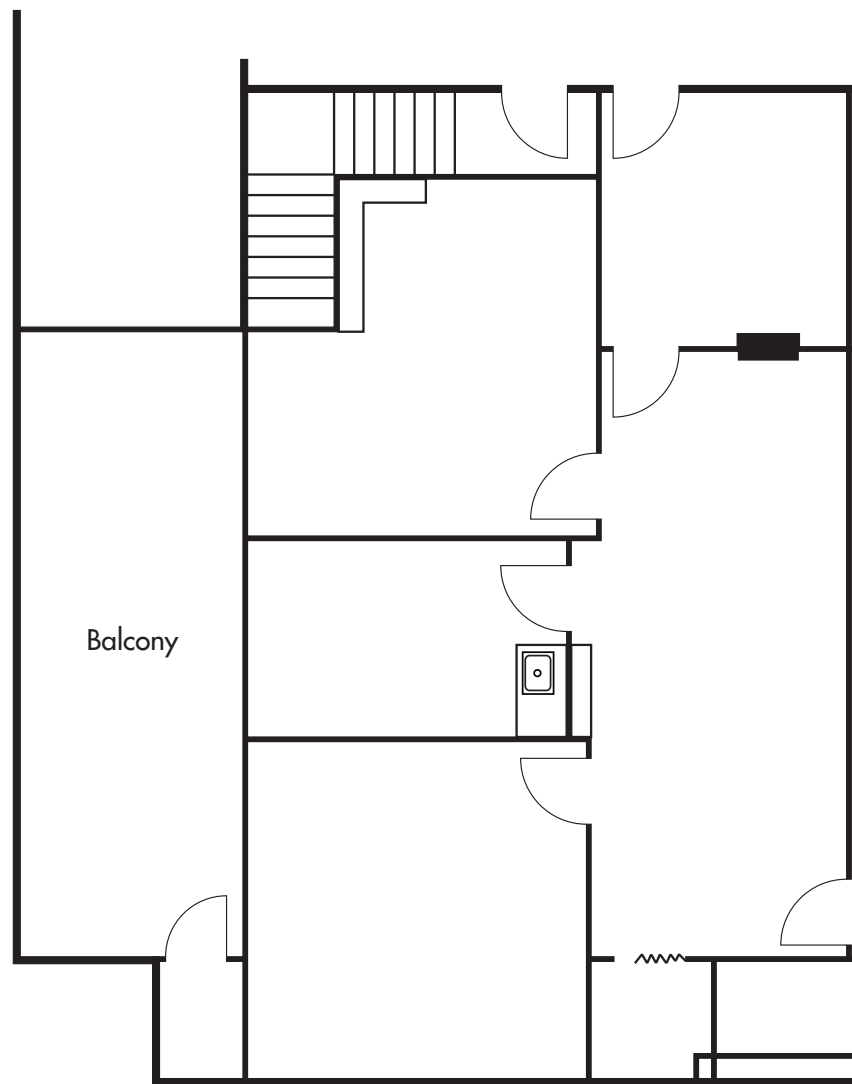
# Suite 301

1,665 RSF





# Suite 303



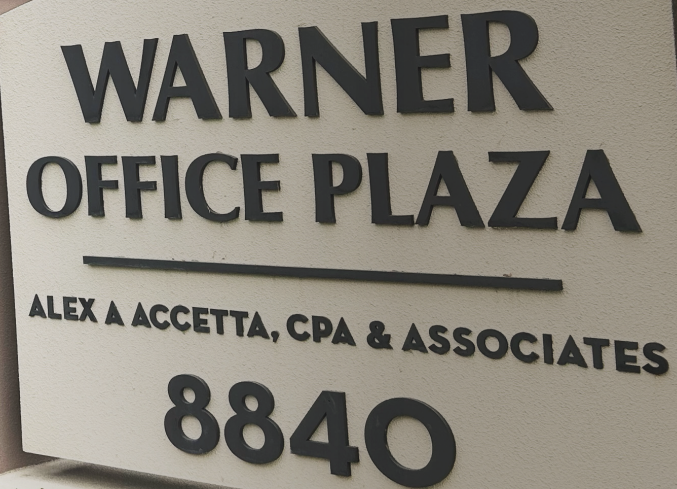


**REID WEAVER**

Lic# 01995422  
+1 949 725 8688  
[reid.weaver@cbre.com](mailto:reid.weaver@cbre.com)

**TAYLOR FRIEND**

Lic# 01885394  
+1 714 566 5998  
[taylor.friend@cbre.com](mailto:taylor.friend@cbre.com)

A large, light-colored stone or concrete sign for Warner Office Plaza. The sign is mounted on a low wall and features the name "WARNER OFFICE PLAZA" in large, bold, black capital letters. Below this, in smaller black capital letters, is "ALEX A ACCETTA, CPA & ASSOCIATES". At the bottom of the sign, the address "8840" is displayed in large, bold, black numbers. The sign is surrounded by green landscaping, including bushes and tall grasses.

**WARNER  
OFFICE PLAZA**

---

**ALEX A ACCETTA, CPA & ASSOCIATES**

**8840**