

FOR LEASE

PARC PLACE

5860 S. Pecos Road, Las Vegas, NV 89120



Pete Janemark, CCIM

Senior Vice President

D: 702.527.7923 | C: 702.885.7383

pete.janemark@svn.com

NV #S.76731



All SVN® offices are independently owned and operated.

PROPERTY SUMMARY



OFFERING SUMMARY

BUILDING SIZE:	8,800 SF
AVAILABLE SF:	1,848 - 2,816 SF
LOT SIZE:	0.6 Acres
YEAR BUILT:	2004
ZONING:	Clark County Office & Professional (C-P)
MARKET:	Las Vegas
APN:	161-31-114-010

PETE JANEMARK, CCIM
O: 702.527.7923 | C: 702.885.7383
pete.janemark@svn.com
NV #S.76731

PROPERTY OVERVIEW

This office building is part of a campus like atmosphere of smaller professional single story office buildings, with ample walkways, break areas, and plenty of parking. The building features wide hallways, plenty of shared space, and a shared kitchen with a sink and refrigerator.

PROPERTY HIGHLIGHTS

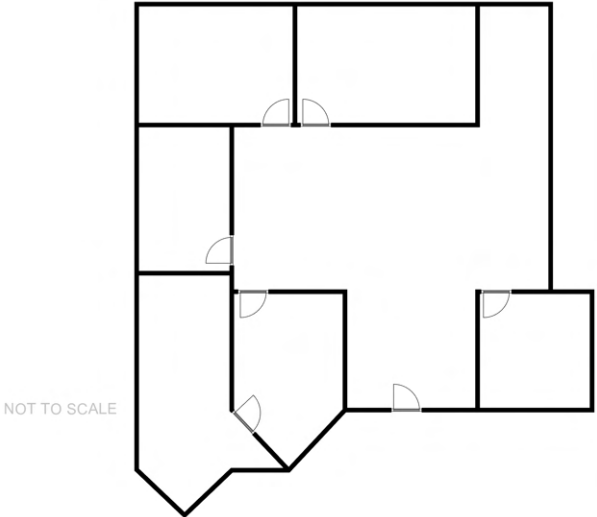
- Modern - Low Maintenance
- Ample Parking
- Shared Kitchen with Refrigerator
- Secure and Alarmed Building
- Three Building Entrances

ADDITIONAL PHOTOS



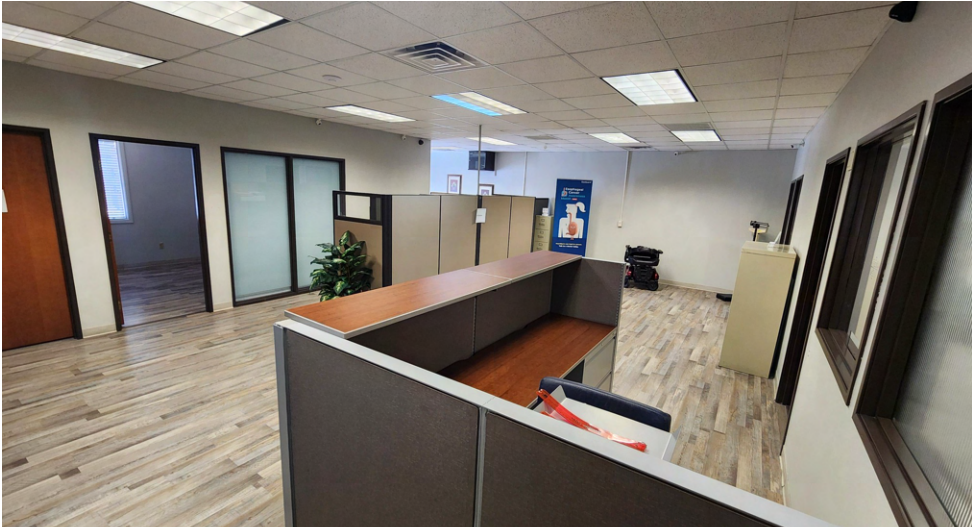
PETE JANEMARK, CCIM
O: 702.527.7923 | C: 702.885.7383
pete.janemark@svn.com
NV #S.76731

5860 S PECOS ROAD - SUITE 200 - ±2,816 SF



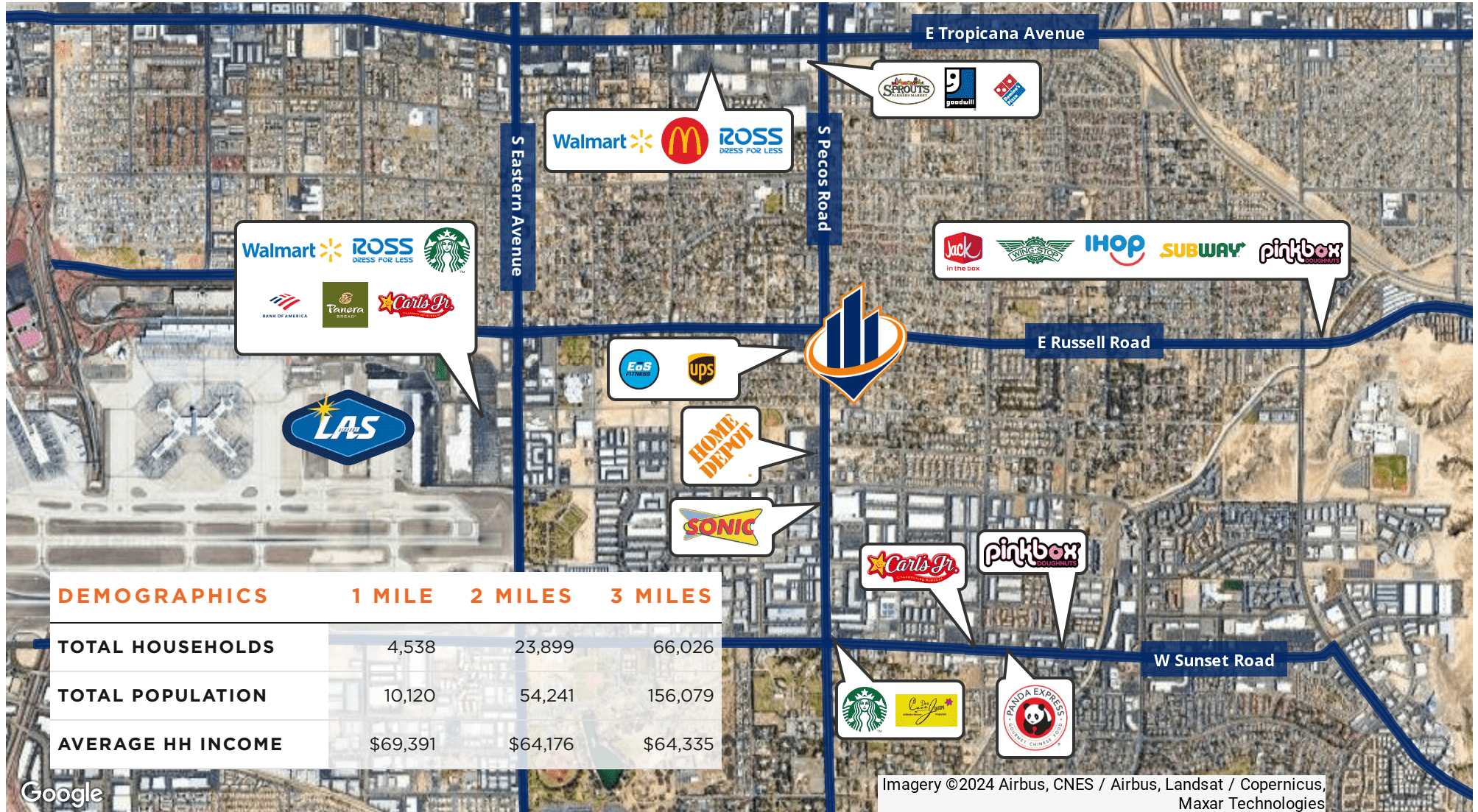
SUITE DESCRIPTION

This ready to occupy ground floor office suite features a large open work area, and six large offices.



PETE JANEMARK, CCIM
O: 702.527.7923 | C: 702.885.7383
pete.janemark@svn.com
NV #S.76731

RETAILER MAP



PETE JANEMARK, CCIM
 O: 702.527.7923 | C: 702.885.7383
 pete.janemark@svn.com
 NV #S.76731

PARC PLACE, BUILDING G | 5860 S Pecos Road Las Vegas, NV 89120