

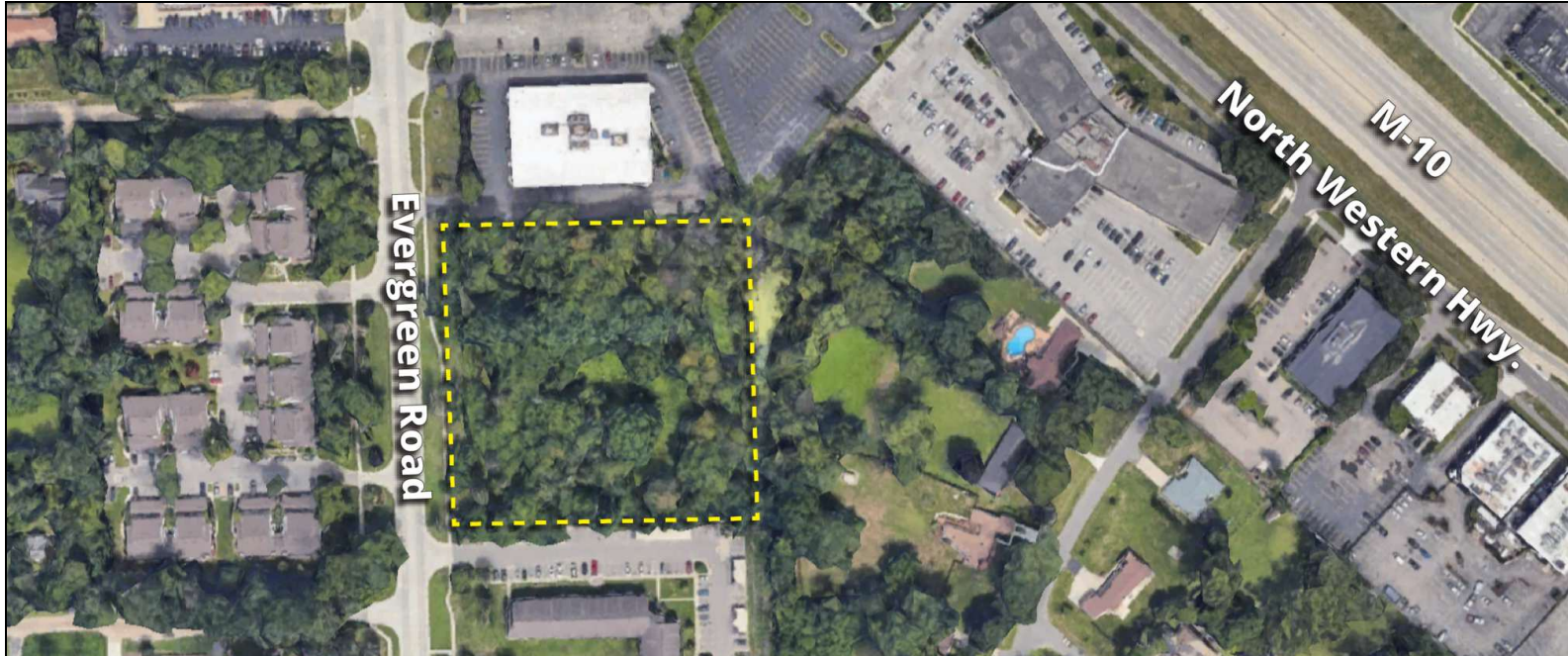
PROPERTY FOR SALE

24202-24346 Evergreen Road
Southfield, MI 48075



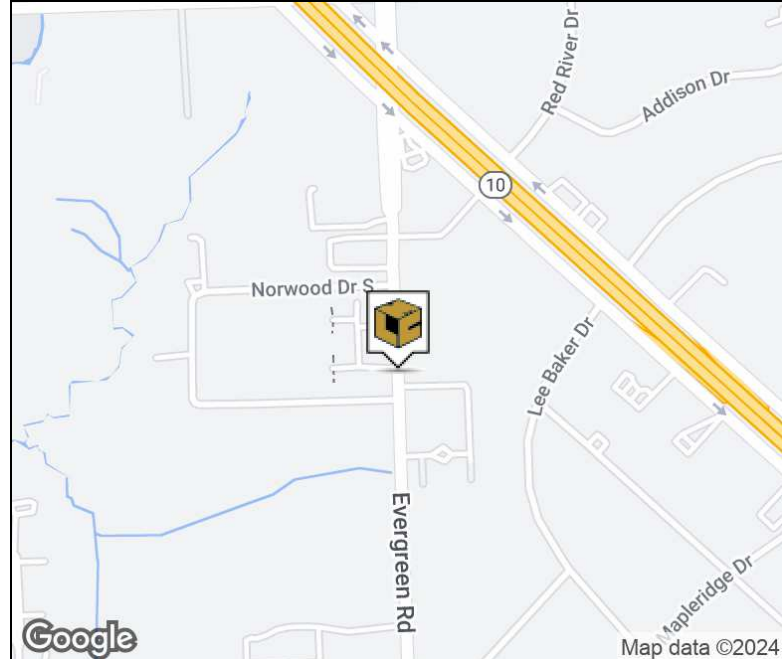
L. MASON CAPITANI
CORFAC INTERNATIONAL

PROPERTY SUMMARY



Property Highlights

- 3.59 Acres For Sale
- Ideal Development Opportunity
- Located just South of M-10 on Evergreen Road
- Close Proximity to I-696
- Possible Land Contract Available



FOR MORE INFORMATION:

Aaron Smith

Vice President
248.637.3515
asmith@lmcap.com

Michael Elle

Sales Associate
248.637.3526
melle@LMCap.com



CONNECT WITH US

248.637.9700 | www.LMCap.com

Information contained herein was obtained from sources deemed to be reliable but is not guaranteed. Subjects to prior sales, changes of price or withdrawal.

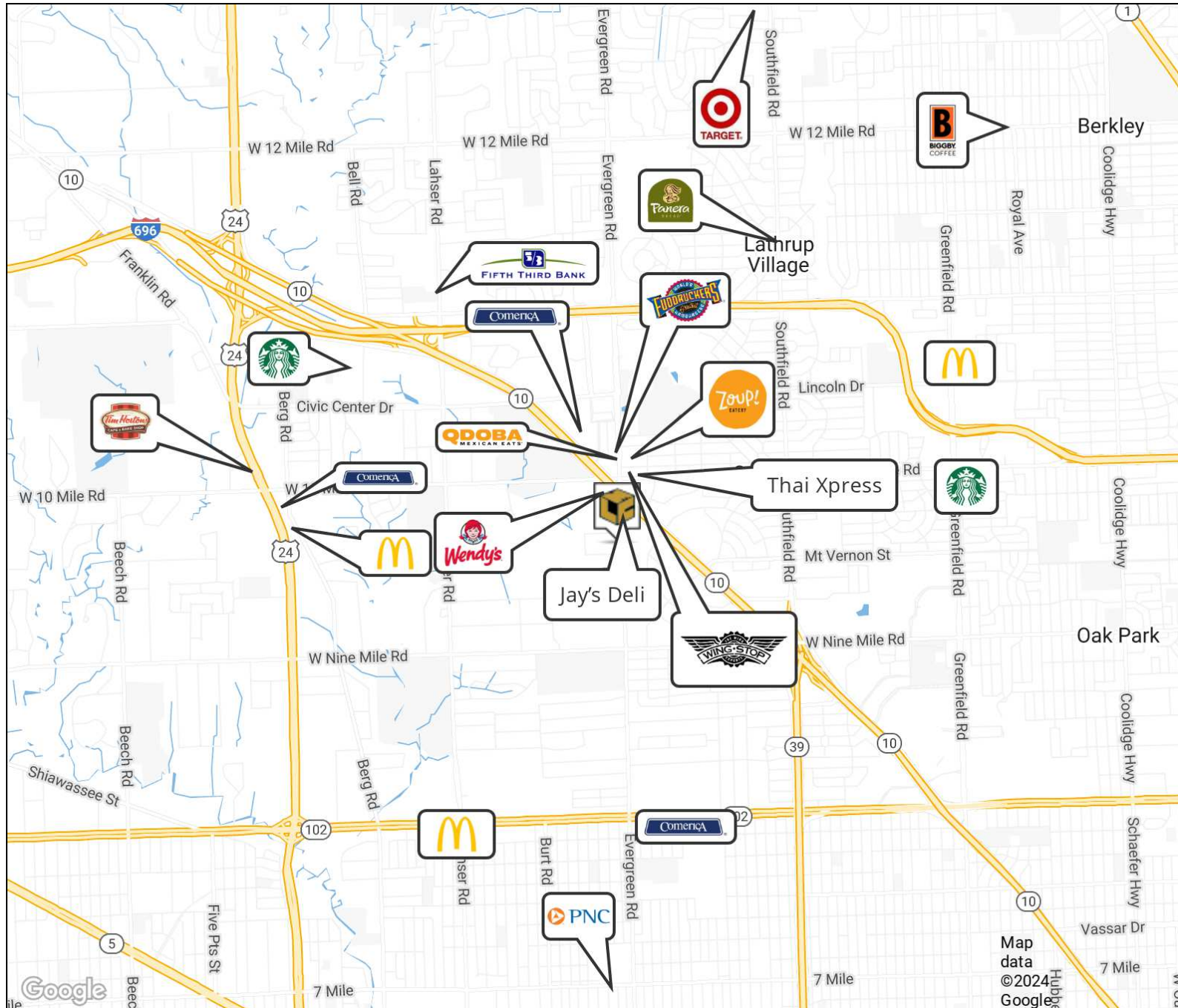
PROPERTY FOR SALE

24202-24346 Evergreen Road
Southfield, MI 48075



L. MASON CAPITANI
CORFAC INTERNATIONAL

RETAILER MAP



FOR MORE INFORMATION:

Aaron Smith

Vice President
248.637.3515
asmith@lmcap.com

Michael Elle

Sales Associate
248.637.3526
melle@LMCap.com



CONNECT WITH US

248.637.9700 | www.LMCap.com

Information contained herein was obtained from sources deemed to be reliable but is not guaranteed. Subjects to prior sales, changes of price or withdrawal.

PROPERTY FOR SALE

24202-24346 Evergreen Road
Southfield, MI 48075



L. MASON CAPITANI
CORFAC INTERNATIONAL

LAND PROPERTY DETAILS

Property Information

Property Type	Land
Zoning	OS
Property Subtype	Other
Lot Size	3.59 Acres
Lot Frontage	393 ft
Lot Depth	390 ft
Site Description	-
APN #	76-24-26-150-006, 007
Additional Information	Ideal Development Opportunity

Sale Price	\$500,000
Price Per Acre	\$139,276
Price Per SF	\$3.20

Location Information

Street Address	24202-24346 Evergreen Road
City, State, Zip	Southfield, MI 48075
County	Oakland
Location Description	S of Northwestern Highway on E side of Evergreen Road
Cross-Streets	-
Side of the Street	East
Nearest Highway	M-10

Utilities

Water	No
Sewer	No
Gas	No
Electric	No

FOR MORE INFORMATION:

Aaron Smith

Vice President
248.637.3515
asmith@lmcap.com

Michael Elle

Sales Associate
248.637.3526
melle@LMCap.com



CONNECT WITH US

248.637.9700 | www.LMCap.com

Information contained herein was obtained from sources deemed to be reliable but is not guaranteed. Subjects to prior sales, changes of price or withdrawal.