



169 HUDSON

TRIBECA RETAIL FOR SALE

TRIBECA | MANHATTAN
BETWEEN VESTRY AND LAIGHT STREET


CURRENT

169 HUDSON

SIZE

Ground Floor: 4,000 SF

Lower Level: 2,500 SF

Total: 6,500 SF

ASKING PRICE

\$5,000,000

TAXES & COMMON CHARGES

\$9,004/month

\$2,300/month

CEILING HEIGHTS

Ground Floor: 12'

Lower Level: 9'

HIGHLIGHTS

- Highly motivated seller!
- Unique ground floor opportunity in the most prestigious and sought-after zip code in the city
- Space features 20' exposed brick arches, blackened steel columns and rugged wood beams throughout the ceiling
- Skylights and glass floors along the rear of space allow for ample light to reach lower level
- 600 Amps Electrical
- HVAC: 10 tons unit in lower level
- Own hot water heater



169 HUDSON



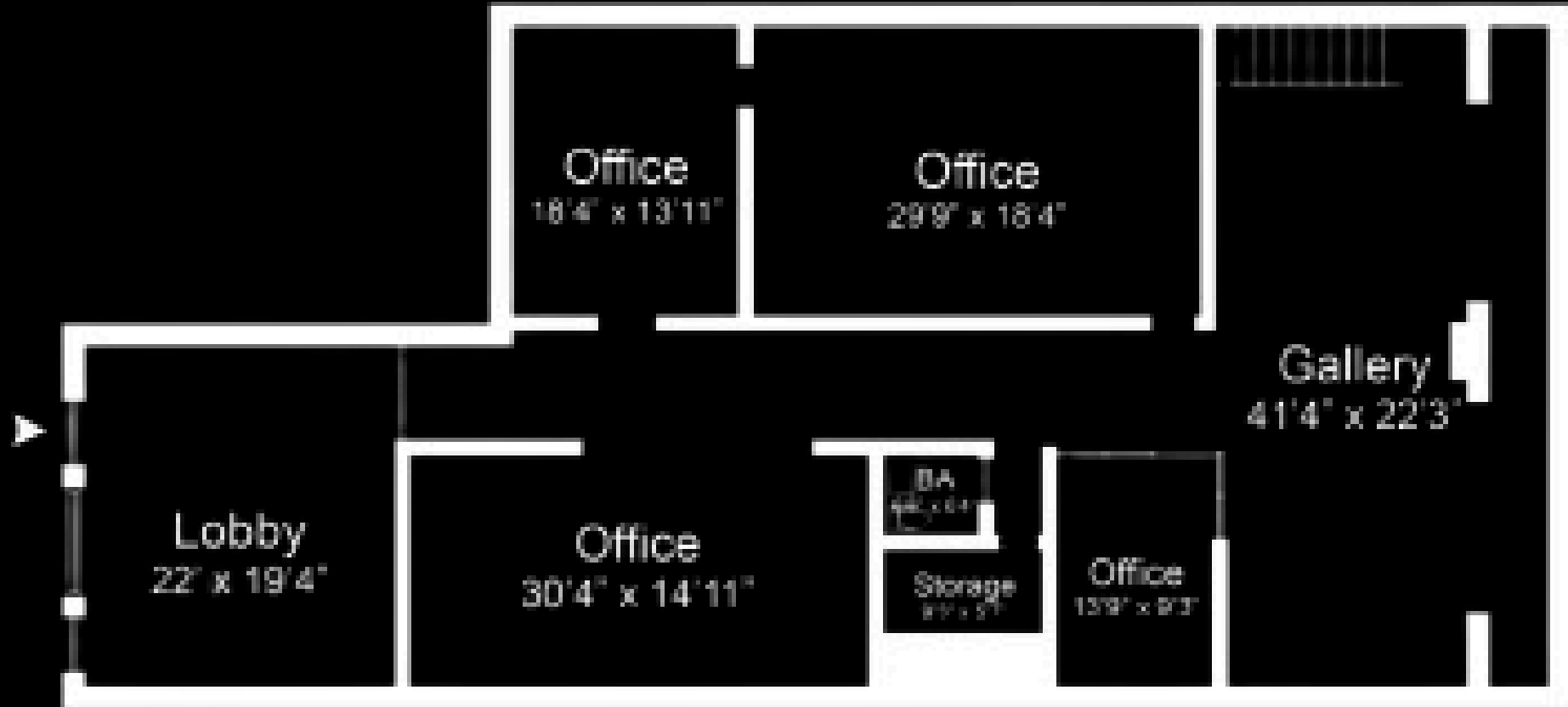


169 HUDSON



169HUDSON
FLOOR PLANS

GROUND FLOOR



[VIRTUAL TOUR](#)

LOWER LEVEL



[VIRTUAL TOUR](#)



CONTACT

MICHAEL SEGERMAN
msegerman@currentreadvisors.com
516.297.3337

CURRENT
Real Estate Advisors