



MID-ATLANTIC ACQUISITIONS LLC

3320 NOBLE POND WAY | WOODBRIDGE, VA

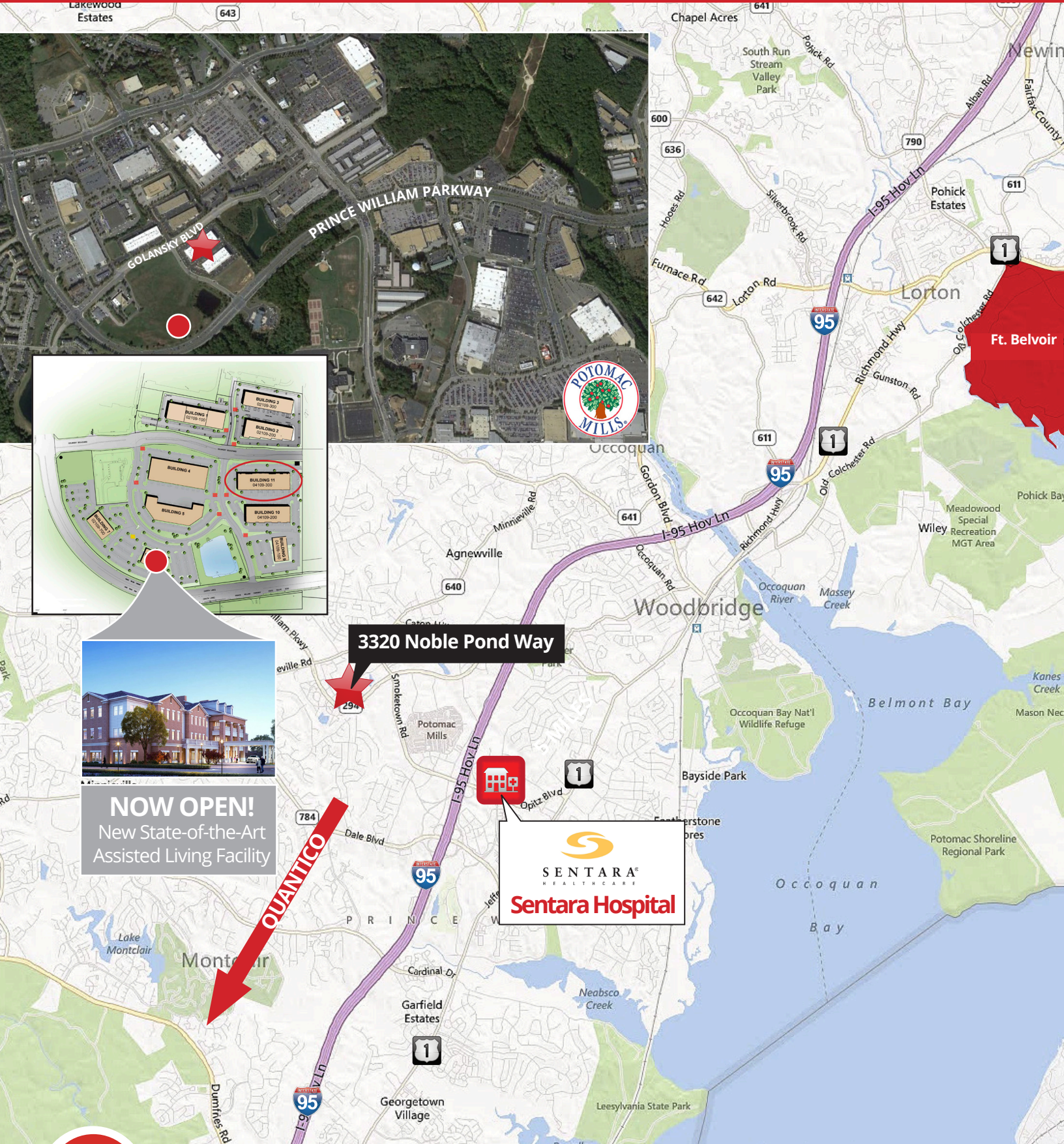
PRINCE WILLIAM COMMONS BUILDING 11



Property Features

- Office/Flex/Retail/R&D
- Ceiling Height: 24' R&D / 9'-10' Office
- Column Spacing: 40'w x 40'd
- Drive-up Docks: 48" h
- Parking: 3.00 Ratio
- Amenities Close By
- Premier Signage
- MPSI 2010 Traffic Volume Estimate at Prince William Parkway and Golansky Blvd = 51,922
- Close to I-95 (1.4 Miles), Prince William Parkway, Ft. Belvoir, MCB Quantico and Potomac Hospital (2 Miles)
- **NOW OPEN! New State-of-the-Art Assisted Living Facility within Prince William Commons**

Traci Morris Cole | 703.328.7884 | tmcole@midacq.com



NOW OPEN!
New State-of-the-Art
Assisted Living Facility

3320 Noble Pond Way

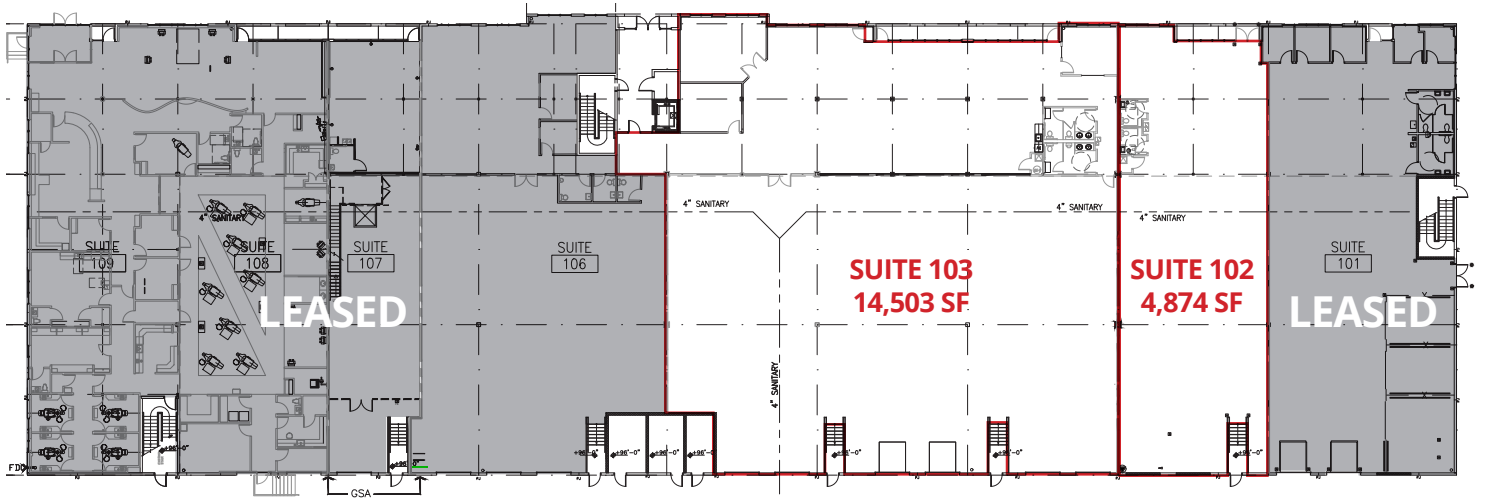



SENTARA
HEALTHCARE
Sentara Hospital



Traci Morris Cole | 703.328.7884 | tmcole@midacq.com

First Floor



Second Floor

