



101 Isanti Parkway Suite A & B Isanti, MN

- 2 Condo Units Available 2250 - 4500 SF
 - 1250 SF Office
 - 1150 SF Clean Room
 - 2100 SF Warehouse
 - 1250 SF Mezzanine
- 2 - 14 ft Overhead Doors
- 208 3 Phase Power
- 18 ft Clear Height
- In-Floor Heat
- New High Efficiency Boiler
- With 2 bathrooms space can easily be divided
- CAM - \$1.20psf
- Tax - \$1.10psf

Lease Rate \$10-\$14psf NNN



Contact:

Nik Anderson
COMMERCIAL AGENT

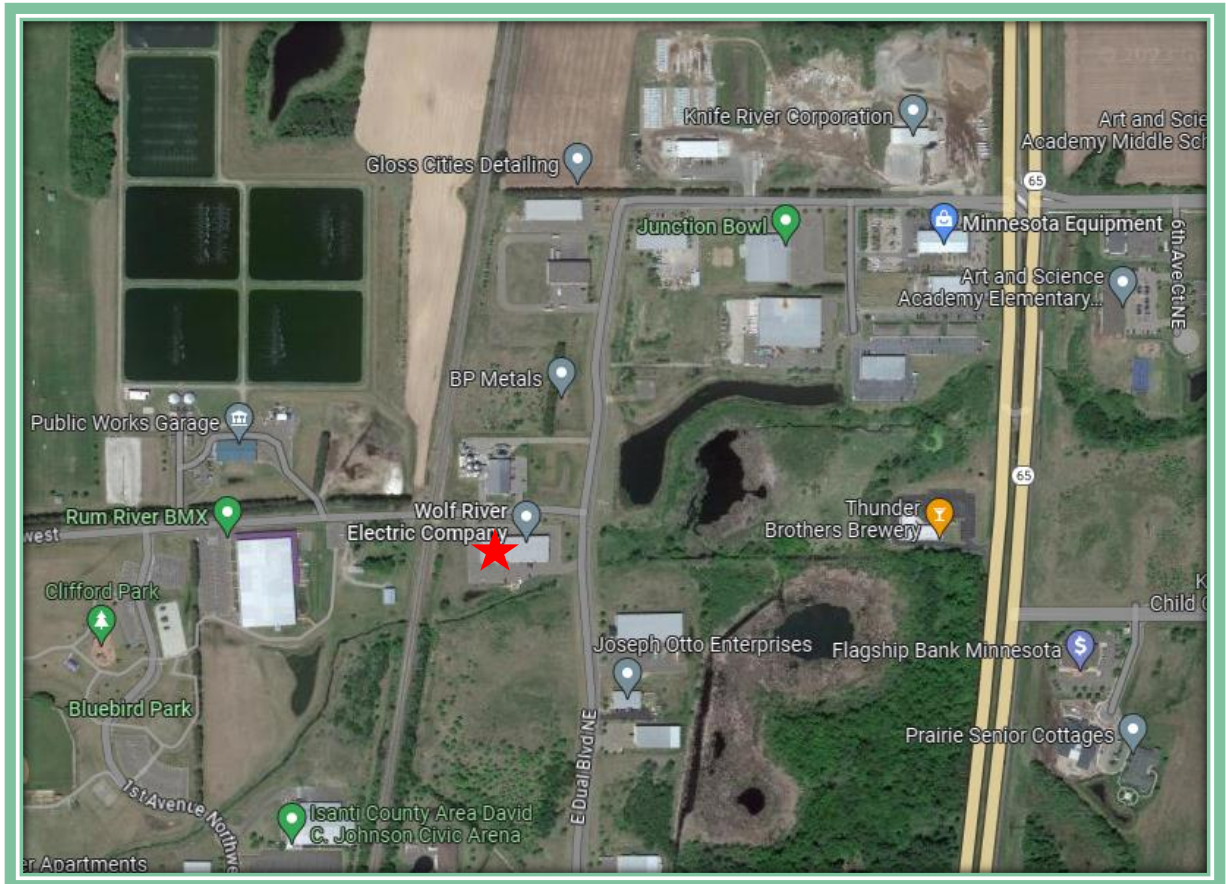
651.497.7222 direct 763.689.0349 office 763.552.5754 fax
Nik@ricproperty.com

Contact:

Matt Anderson
COMMERCIAL BROKER

612.327.2977 direct 763.689.0349 office 763.552.5754 fax
Matt@ricproperty.com

Local Retail



Contact:

Nik Anderson
COMMERCIAL AGENT

651.497.7222 direct 763.689.0349 office 763.552.5754 fax

Nik@ricproperty.com

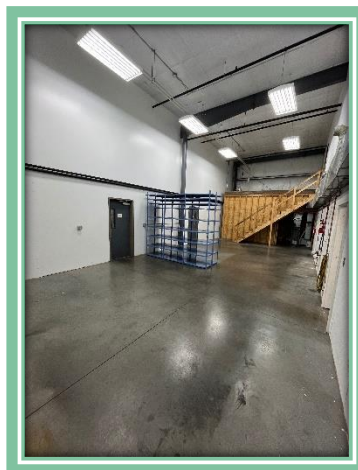
Contact:

Matt Anderson
COMMERCIAL BROKER

612.327.2977 direct 763.689.0349 office 763.552.5754 fax

Matt@ricproperty.com

Interior Photos



Contact:

Nik Anderson
COMMERCIAL AGENT

651.497.7222 direct 763.689.0349 office 763.552.5754 fax

Nik@ricproperty.com

Contact:

Matt Anderson
COMMERCIAL BROKER

612.327.2977 direct 763.689.0349 office 763.552.5754 fax

Matt@ricproperty.com



DEMOGRAPHICS

	3 MILES	5 MILES	10 MILES
POPULATION	9,006	17,866	50,201
MEDIAN HH INCOME	\$73,693	\$73,272	\$76,534

TRAFFIC COUNTS

HWY 65 AT COUNTY RD 5	18,900 CARS PER DAY
COUNTY RD 5 AT DUAL BLVD	1050-1550 CARS PER DAY
HWY 65 AT CAJIMA	18,900 CARS PER DAY

Contact:

Nik Anderson

COMMERCIAL AGENT

651.497.7222 direct 763.689.0349 office 763.552.5754 fax

Nik@ricproperty.com

Contact:

Matt Anderson

COMMERCIAL BROKER

612.327.2977 direct 763.689.0349 office 763.552.5754 fax

Matt@ricproperty.com