



THOMAS PARK
COMMERCIAL



**1320 REISTERSTOWN RD
PIKESVILLE, MD 21208**

2,175 SF of Retail/Office Available for Lease



JONATHAN BARON

jonathan.baron@thomas-park.com

www.thomas-park.com

410-280-0220

Available For Lease

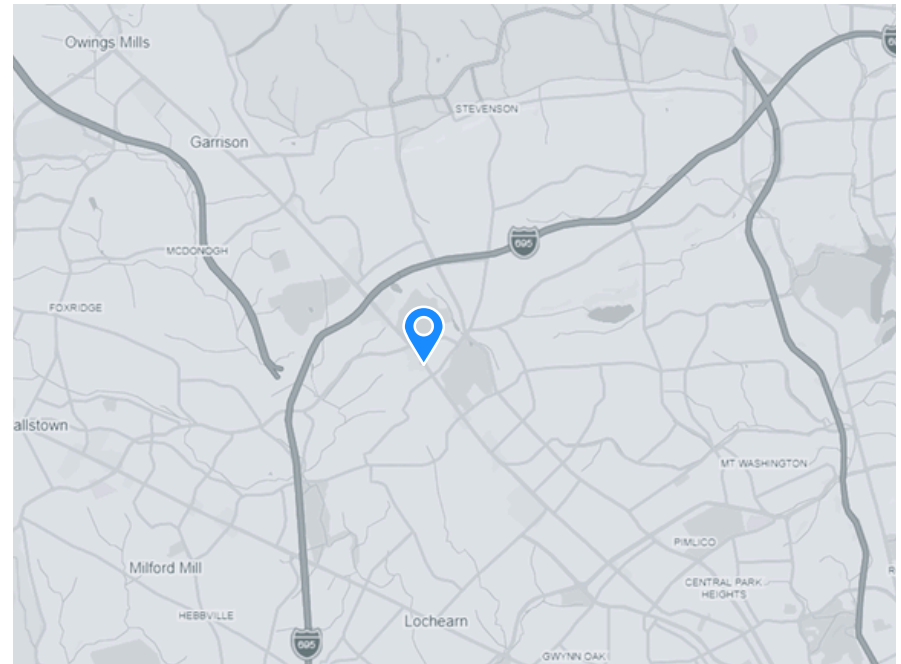
**1320 REISTERSTOWN RD
PIKESVILLE , MD 21208**

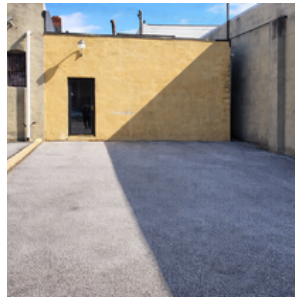
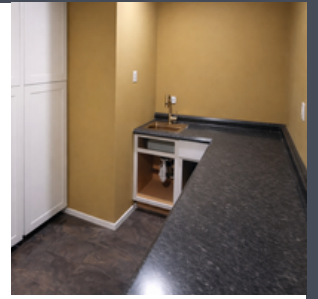
Property Facts

Building Type	Retail/Office
Building Height	1 Story
Building Size	2,175 SF
Rental Rate	\$25 psf NNN
Term	Negotiable
Available	Immediately

Property Overview

Prime retail space available in the heart of Pikesville with excellent signage opportunities along Reisterstown Road. Pikesville is home to the region's well-known Uptown Jewelry District, and this vibrant corridor features a mix of fashionable boutiques, specialty retailers, and popular dining destinations. The nearby Pikesville Armory is currently undergoing a visionary redevelopment that will transform the historic property into a community hub for arts and entertainment. This location offers an exceptional opportunity for retailers to establish and grow their brand in one of the area's most active commercial districts.

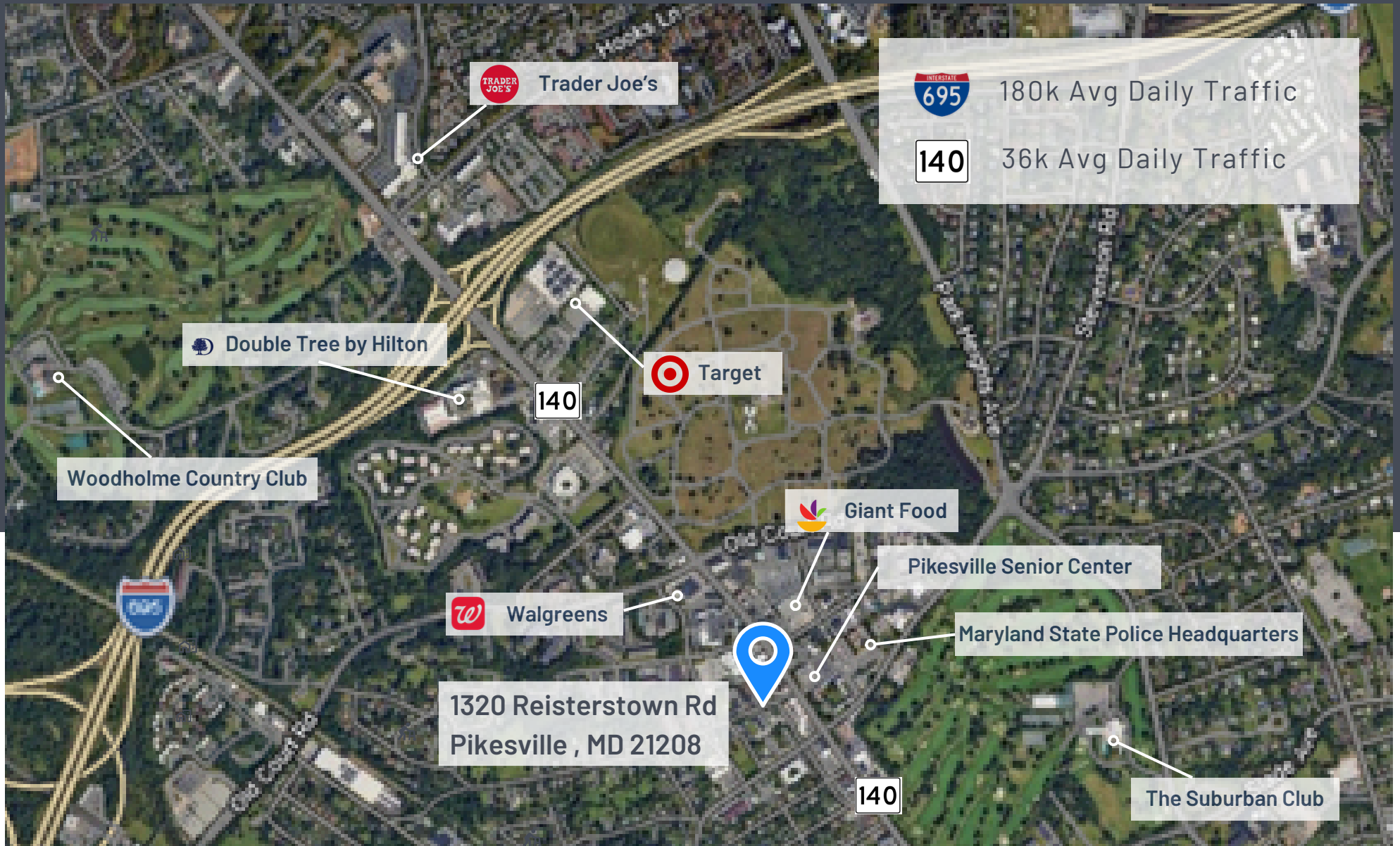




**1320 REISTERSTOWN RD
PIKESVILLE, MD 21208**
2,175 SF of Retail/Office Available for Lease



JONATHAN BARON
jonathan.baron@thomas-park.com
www.thomas-park.com
410-280-0220



**1320 REISTERSTOWN RD
PIKESVILLE, MD 21208**

2,175 SF of Retail/Office Available for Lease

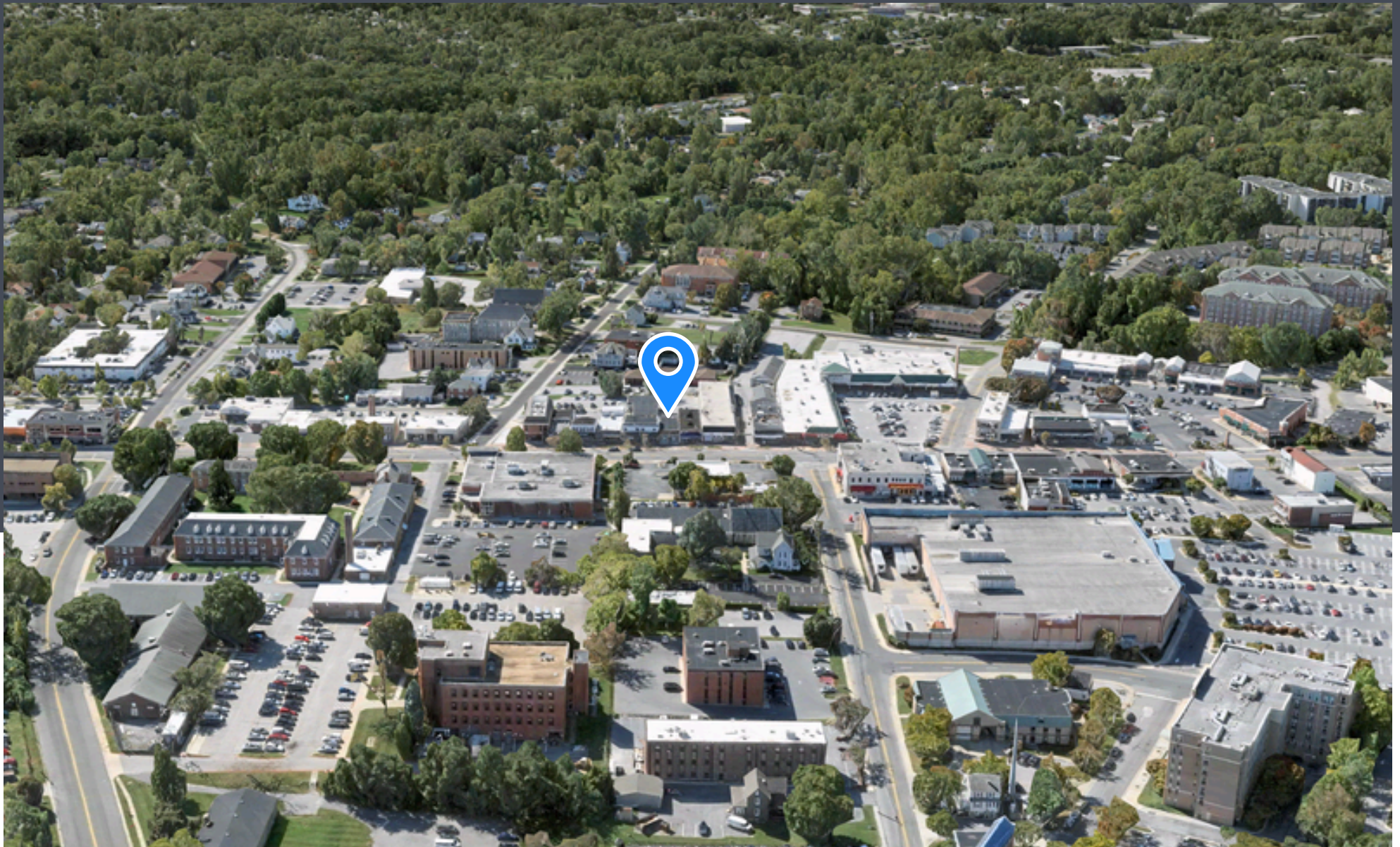


JONATHAN BARON

jonathan.baron@thomas-park.com

www.thomas-park.com

410-280-0220



1320 REISTERSTOWN RD
PIKESVILLE, MD 21208
2,175 SF of Retail/Office Available for Lease



JONATHAN BARON
jonathan.baron@thomas-park.com
www.thomas-park.com
410-280-0220