

CHURCH PROPERTY FOR SALE  
**2.99± ACRES | 2,064± TOTAL SF**

**FOUNDRY**  
COMMERCIAL



10213 SW 170TH STREET | ARCHER, FL 32618

**ASKING PRICE \$149,500**

## DESCRIPTION

The property is 2.99± acres with a church building that is 2,064± square feet.

The building contains a sanctuary, small kitchen, two offices, men's restroom and a women's restroom. The sanctuary has pews that can seat approximately 100± people.

There is ample grass parking for the building.

## BUILDING FEATURES

PARCEL ID	04642-000-000
ACREAGE	2.99 ± AC
TOTAL BUILDING SF	2,064 ± SF
ZONING	Agriculture (A)
USE	Religious
SEATING CAPACITY	100±
PARKING	Grass

FOR MORE INFORMATION, PLEASE CONTACT:

**MATT MESSIER, SIOR, CCIM | 407.540.7718**  
Principal, Managing Director  
Matt.Messier@foundrycommercial.com  
Licensed Real Estate Broker

**CALEB MESSIER | 407.405.4797**  
Associate  
Caleb.Messier@foundrycommercial.com  
Licensed Real Estate Broker

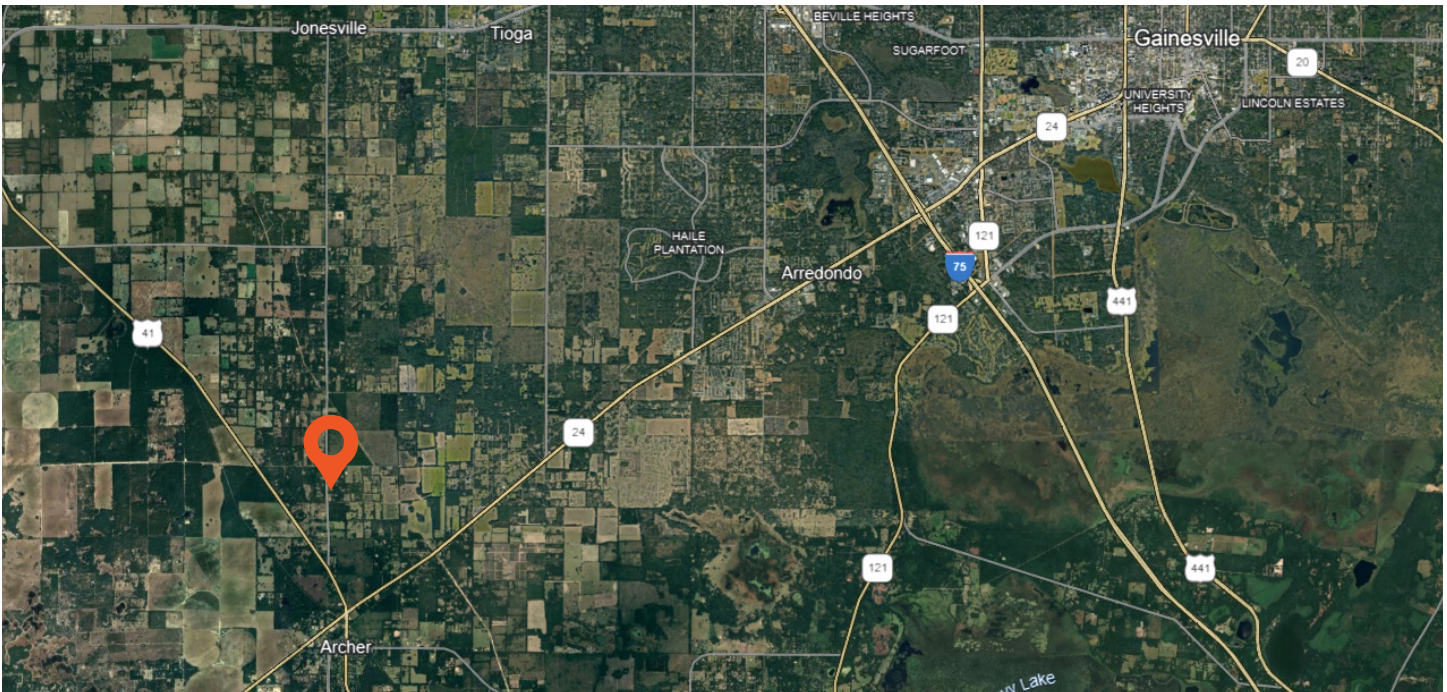
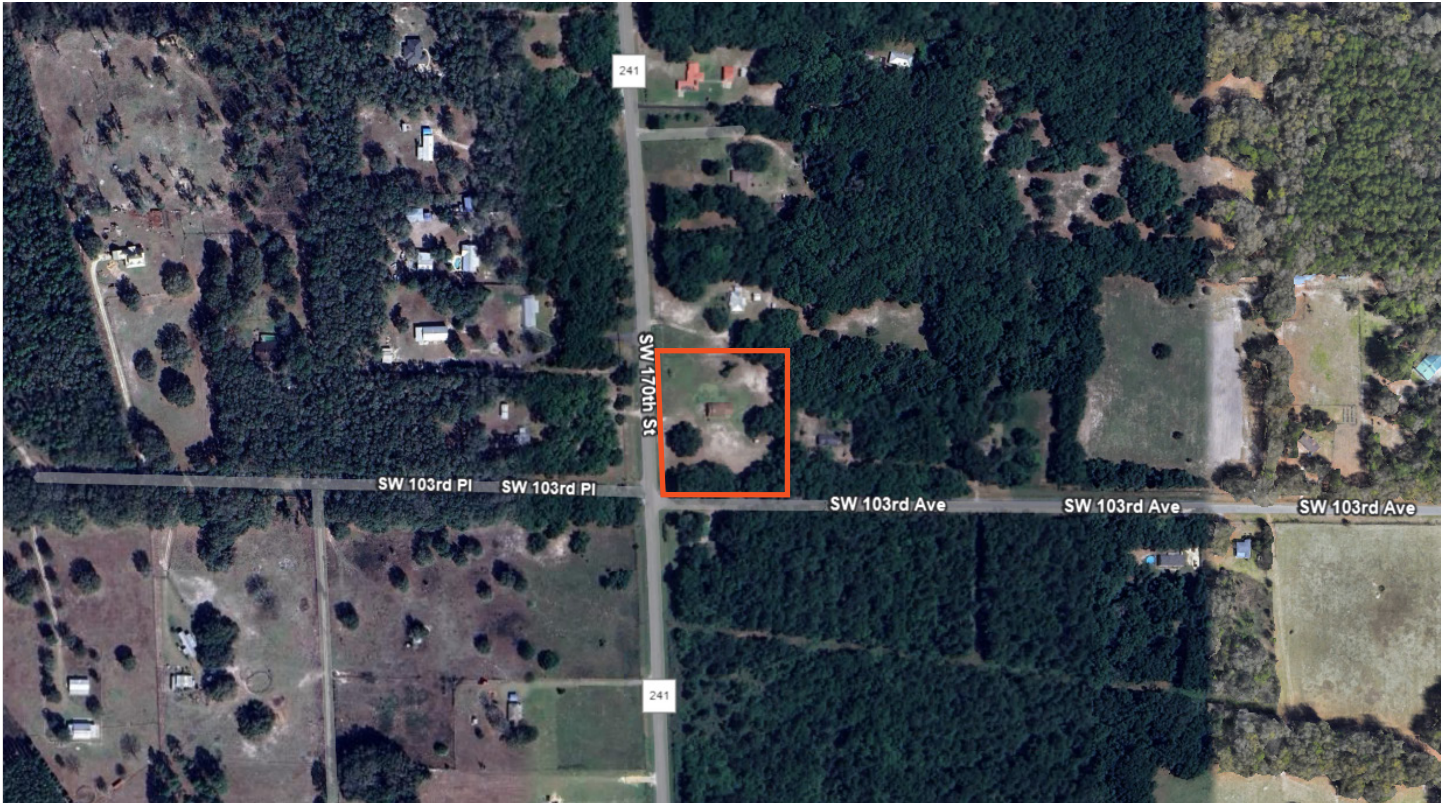
**FOUNDRY**  
COMMERCIAL

MISSION  
PROPERTY  
GROUP

Although all information furnished regarding for sale, rental or financing is from sources we deem reliable, such information has not been verified and no express representation is made nor is any to be implied as to the accuracy thereof, and it is submitted subject to errors, omissions, changes of price, rental or other conditions, prior sale, lease or financing, or withdrawal without notice. All sizes are approximate and subject to survey.

[foundrycommercial.com](http://foundrycommercial.com)

## AERIAL & PROPERTY OUTLINE



FOR MORE INFORMATION, PLEASE CONTACT:

**MATT MESSIER, SIOR, CCIM | 407.540.7718**  
Principal, Managing Director  
Matt.Messier@foundrycommercial.com  
Licensed Real Estate Broker

**CALEB MESSIER | 407.405.4797**  
Associate  
Caleb.Messier@foundrycommercial.com  
Licensed Real Estate Broker

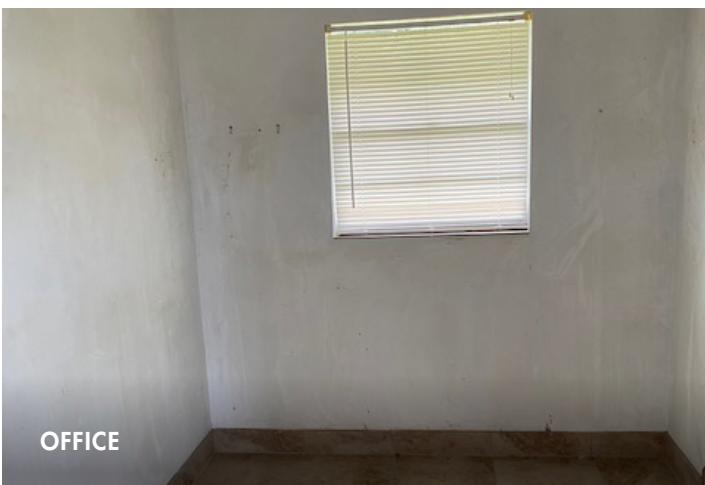
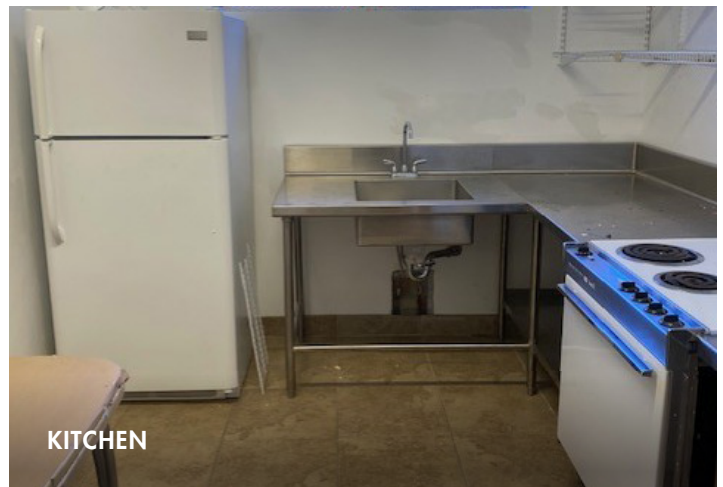
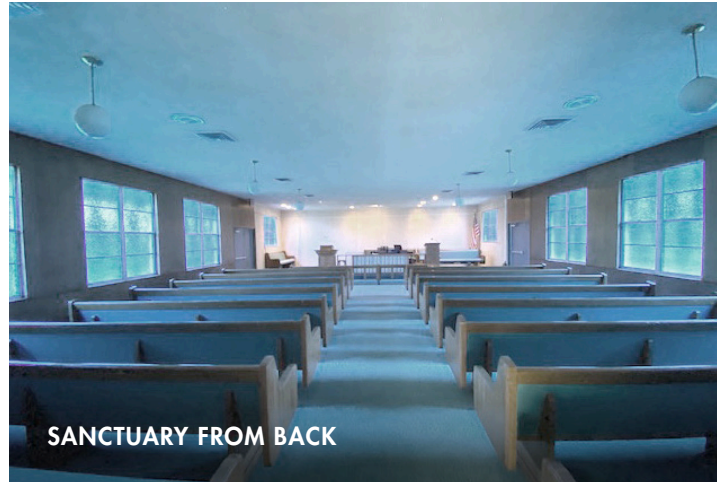
**FOUNDRY**  
COMMERCIAL

MISSION  
PROPERTY  
GROUP

Although all information furnished regarding for sale, rental or financing is from sources we deem reliable, such information has not been verified and no express representation is made nor is any to be implied as to the accuracy thereof, and it is submitted subject to errors, omissions, changes of price, rental or other conditions, prior sale, lease or financing, or withdrawal without notice. All sizes are approximate and subject to survey.

[foundrycommercial.com](http://foundrycommercial.com)

## CHURCH PHOTOS



FOR MORE INFORMATION, PLEASE CONTACT:

**MATT MESSIER, SIOR, CCIM | 407.540.7718**  
Principal, Managing Director  
Matt.Messier@foundrycommercial.com  
Licensed Real Estate Broker

**CALEB MESSIER | 407.405.4797**  
Associate  
Caleb.Messier@foundrycommercial.com  
Licensed Real Estate Broker

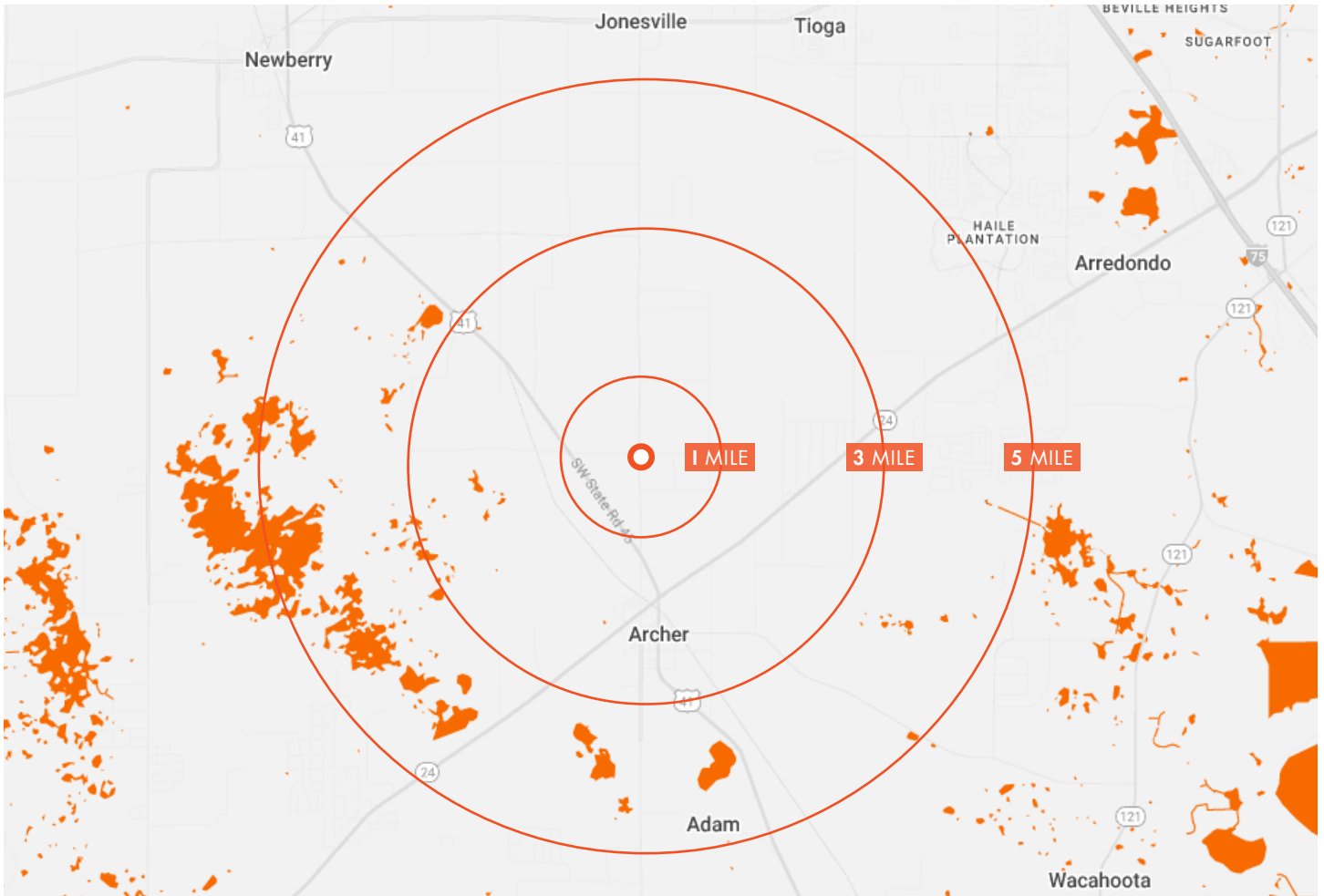
**FOUNDRY**  
COMMERCIAL

MISSION  
PROPERTY  
GROUP

Although all information furnished regarding for sale, rental or financing is from sources we deem reliable, such information has not been verified and no express representation is made nor is any to be implied as to the accuracy thereof, and it is submitted subject to errors, omissions, changes of price, rental or other conditions, prior sale, lease or financing, or withdrawal without notice. All sizes are approximate and subject to survey.

[foundrycommercial.com](http://foundrycommercial.com)

## DEMOGRAPHICS



### 1 MILE RADIUS

	<b>470</b> ESTIMATED POPULATION 2024
	<b>44.7</b> MEDIAN AGE
	<b>\$220,521</b> MEDIAN HOME VALUE 2024
	<b>34</b> TOTAL EMPLOYEES
	<b>\$133,027</b> AVG HOUSEHOLD INCOME

### 3 MILE RADIUS

	<b>3,364</b> ESTIMATED POPULATION 2024
	<b>41.7</b> MEDIAN AGE
	<b>\$265,103</b> MEDIAN HOME VALUE 2024
	<b>477</b> TOTAL EMPLOYEES
	<b>\$121,163</b> AVG HOUSEHOLD INCOME

### 5 MILE RADIUS

	<b>6,002</b> ESTIMATED POPULATION 2024
	<b>41.4</b> MEDIAN AGE
	<b>\$271,594</b> MEDIAN HOME VALUE 2024
	<b>1,257</b> TOTAL EMPLOYEES
	<b>\$123,449</b> AVG HOUSEHOLD INCOME

FOR MORE INFORMATION, PLEASE CONTACT:

**MATT MESSIER, SIOR, CCIM | 407.540.7718**  
Principal, Managing Director  
Matt.Messier@foundrycommercial.com  
Licensed Real Estate Broker

**CALEB MESSIER | 407.405.4797**  
Associate  
Caleb.Messier@foundrycommercial.com  
Licensed Real Estate Broker

**FOUNDRY**  
COMMERCIAL

MISSION  
PROPERTY  
GROUP

Although all information furnished regarding for sale, rental or financing is from sources we deem reliable, such information has not been verified and no express representation is made nor is any to be implied as to the accuracy thereof, and it is submitted subject to errors, omissions, changes of price, rental or other conditions, prior sale, lease or financing, or withdrawal without notice. All sizes are approximate and subject to survey.

[foundrycommercial.com](http://foundrycommercial.com)