

# 2508 FAIRWAY PARK DRIVE

2500-2530 FAIRWAY PARK DRIVE, HOUSTON, TX 77092

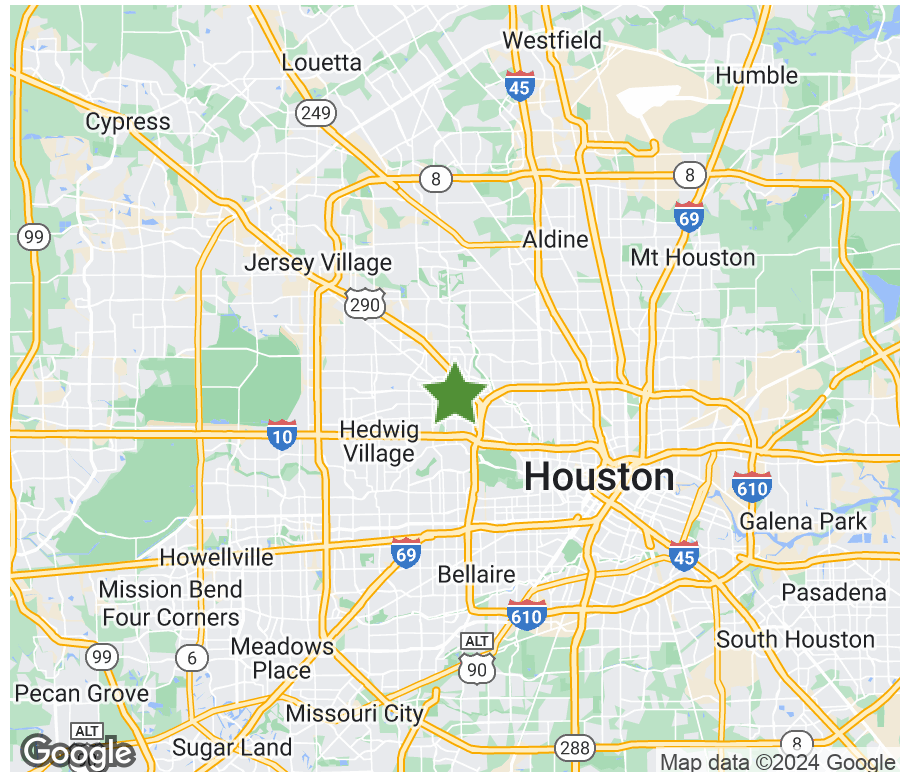


**13,401 SF | FOR LEASE**

The property 2500 - 2530 Fairway Park Drive is a well-located warehouse facility within close proximity to Loop 610. This facility is situated between 290 and Hempstead Highway and is ideal for distribution in Houston's northwest corridor.

## PROPERTY SPECIFICATIONS

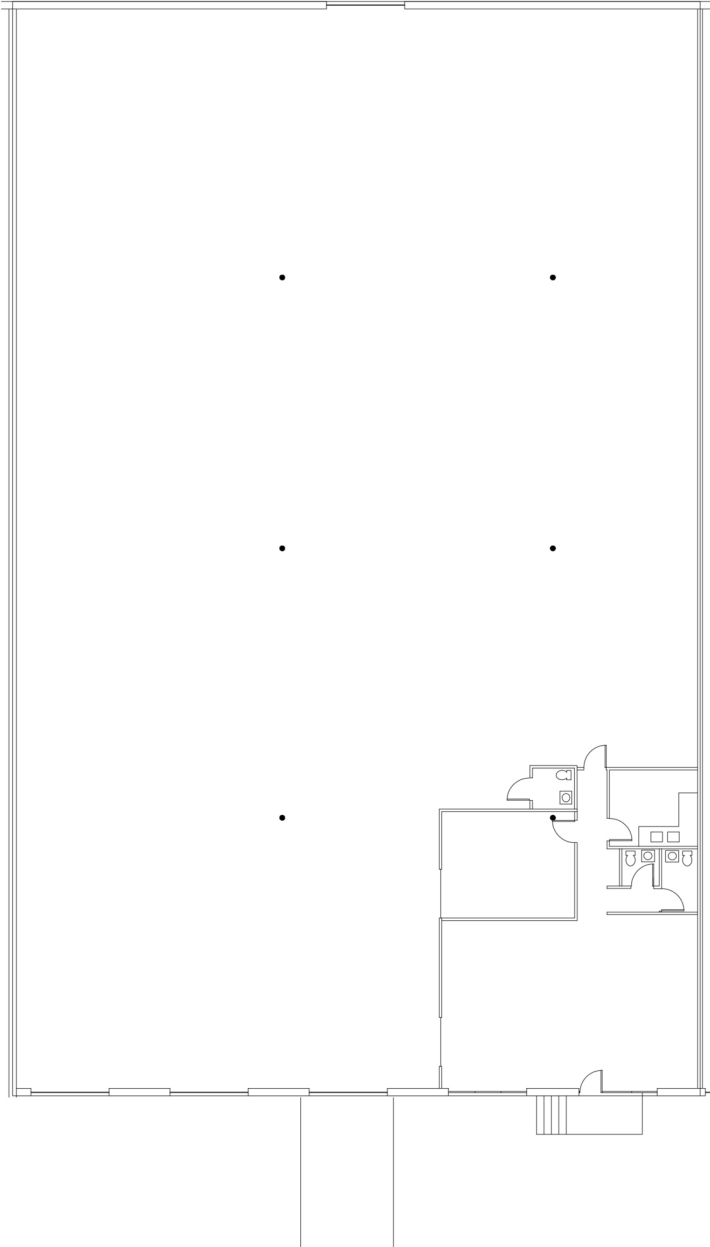
Available Space:	13,401 SF
Office Space:	1,924 SF
Submarket:	Northwest Houston
Ceiling Height:	22
Dock High Doors:	2
Drive In Doors:	1
Sprinkler:	NonESFR
Zoning:	N/A



# 2508 FAIRWAY PARK DRIVE

13,401 SF | FOR LEASE

## FLOOR PLAN



### BROKER CONTACT

#### David Munson, SIOR

Cushman & Wakefield

713.913.5473

david.munson@cushwake.com

#### Garrett Thomas

Cushman & Wakefield

713.260.0244

garrett.thomas@cushwake.com



---

### OWNER CONTACT

#### Brad Kluever

Senior Regional Director

312.344.4347

bkluever@firstindustrial.com

