

# FOR LEASE

## Refrigerated & Food Processing Facility



### Property Highlights

- ±19,500 SF building; ±1,500 SF office
- 5 dock-high doors with 6 loading positions
- Freezers, coolers, and food-processing area with plumbing and floor drains
- ±3,000 SF freezer
- ±2,800 SF cooler
- ±12,000 SF production
- Refrigerated loading dock
- Sumner, Washington — 35 minutes to Seattle; 15 minutes to Tacoma
- Easy access to I-5 and SR-167 via major arterials
- Ideal for will-call or full-service food distribution

### Lease & Contact

Lease Rate: Contact for rates

Contact: Jim Brooke

Phone: 415-613-4572

Email: [jim@portofinofoods.com](mailto:jim@portofinofoods.com)

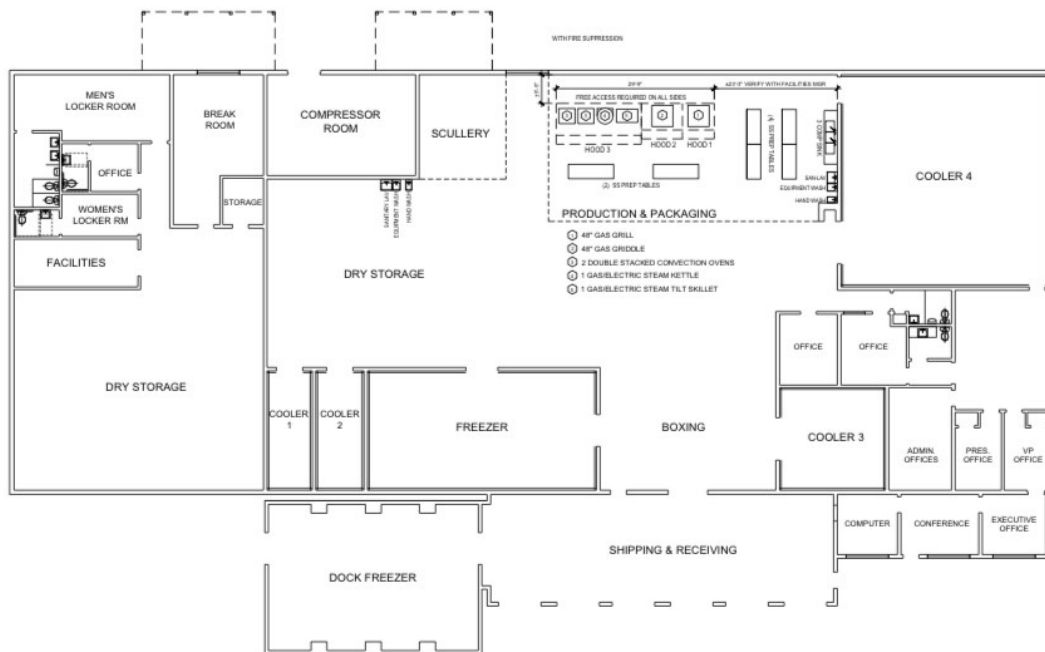
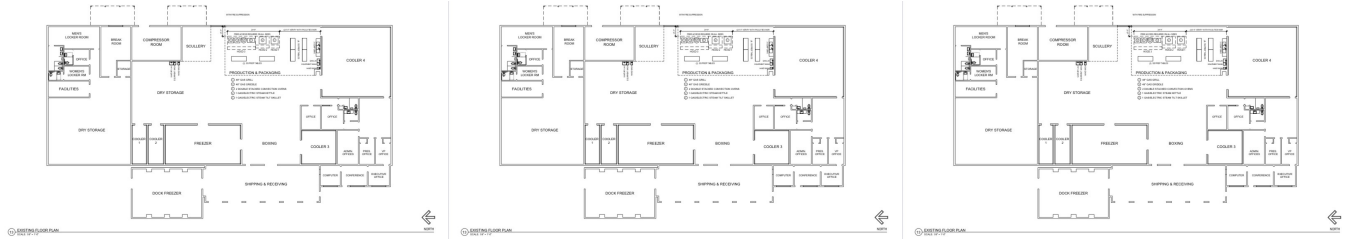
### Address

15509 E Main Street

Sumner, WA 98390

# Facility Photos

## Interiors & Plan



13 EXISTING FLOOR PLAN  
SCALE: 1/8" = 1'-0"

