

4201 W. ALAMEDA AVE

Burbank, CA 91505

(Where Riverside Drive & Alameda Ave Meet)



**Rare Restaurant Space in Toluca Lake/Burbank
Media District For Lease With No Key Money**



**COMMERCIAL
ASSET GROUP**

DAVID ASCHKENASY
EXECUTIVE VICE PRESIDENT
P. 310.272.7381
E. DAVIDA@CAGRE.COM
LIC. 01714442

DAVID ICKOVICS
PRINCIPAL
P. 310.272.7380
E. DJI@CAGRE.COM
LIC. 01315424

COMMERCIAL ASSET GROUP
1801 CENTURY PARK EAST, STE 1550
LOS ANGELES, CA 90067
P. 310.275.8222 F. 310.275.8223
WWW.CAGRE.COM LIC. 01876070

FEATURES

 [CLICK HERE FOR VIDEO](#)

2nd Gen Restaurant Space | Interior: $\pm 1,994$ SQFT
Can be combined with adjacent nail salon space to create a $\pm 3,355$ SQFT Space

- Rent: Inquire with Broker
- Corner Space in Burbank Media Districts restaurant row
- Perfect sized space for small café or QSR
- Area Co-Tenants include Alfred Coffee, Sweetfin, Fresh Brothers, and Tacos 1986, Yakumi by Sushi Roku, Ramen Jinya, Chipotle, Subway, Hanks Bagels, Mendicino Farms, Tocaya Organica, and the Original Bob's Big Boy
- Surrounded by over 3.5 million square feet of entertainment based office including Warner Brothers Studios, the Disney Channel, Disney Studios, PBS, ABC, Burbank Studios, Atlantic Records and many others

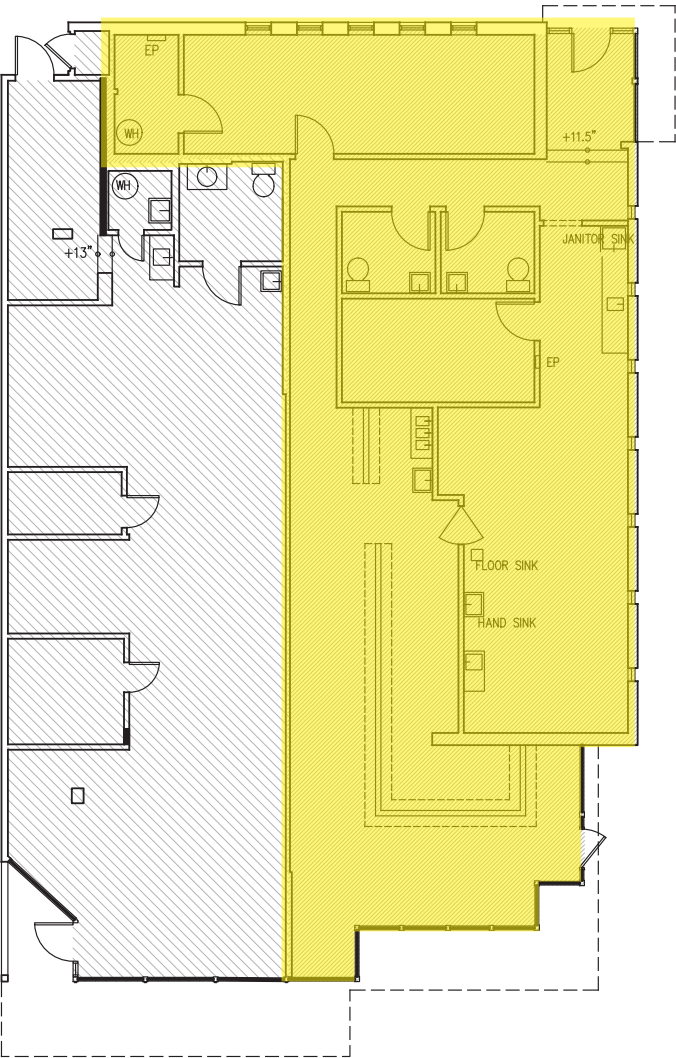


BURBANK MEDIA DISTRICT/TOLUCA LAKE

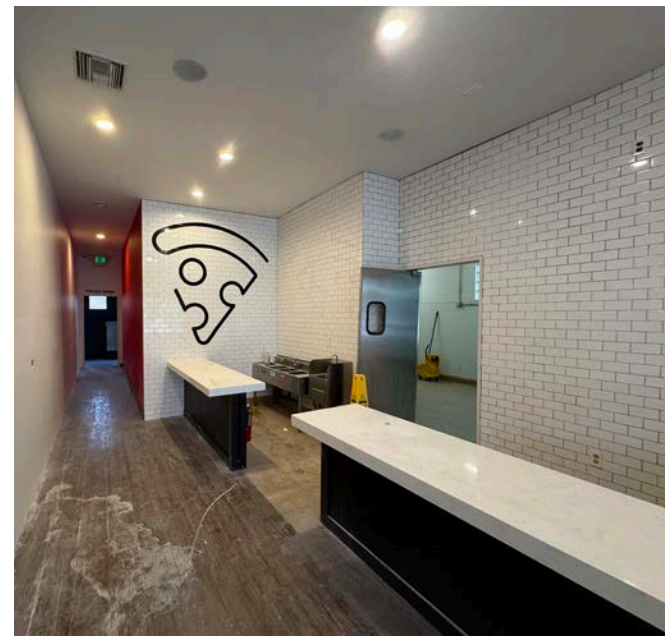
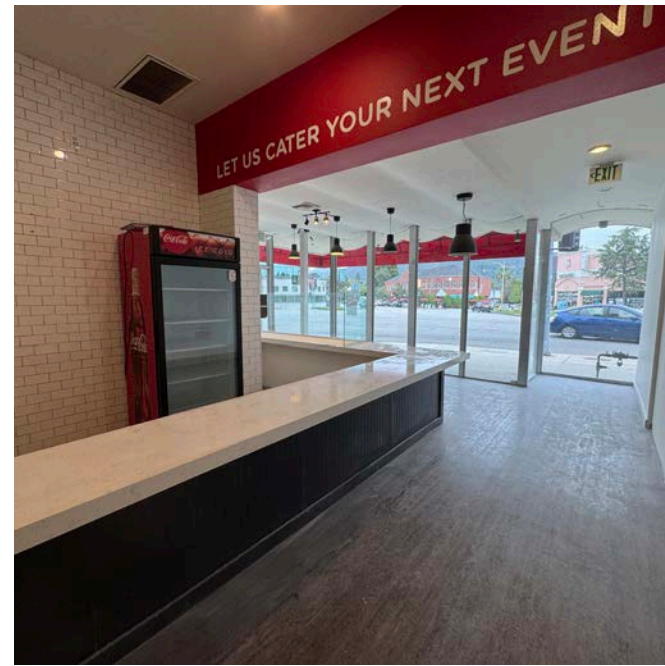
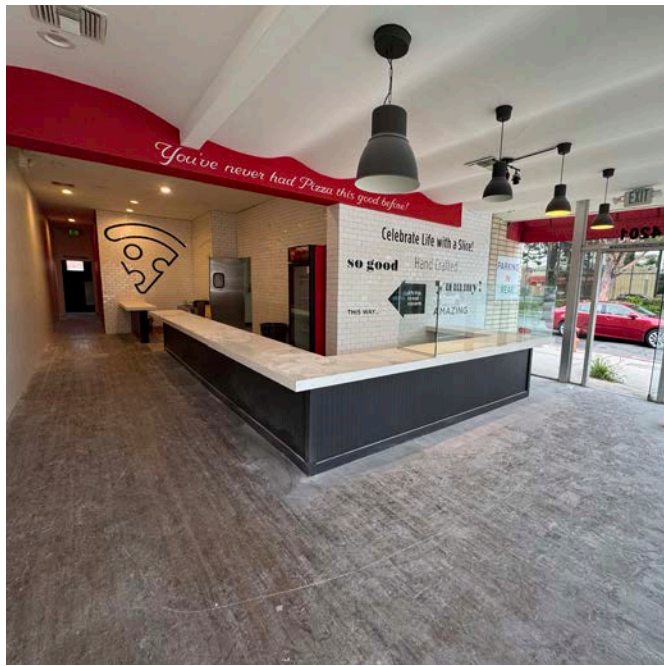
With one of the highest concentrations of entertainment companies in the world, Burbank's famed Media District combines world class production studios with exciting dining options. The area includes The Walt Disney Company world headquarters, ABC Television, Warner Bros. Studios, iHeart Media, New Line Cinema, PBS SoCal, Legendary Entertainment, DC Comics, Hollywood Records and so much more. Current New developments within close proximity include WB Second Century project (800,000 SQ FT of entertainment office) 3700 Riverside Drive (a 49 luxury condo project), and SB 35 at 3201 W Olive (a 144 units apartment project) Toluca Lake: Toluca Lake is a neighborhood in Los Angeles, California with a population of 9,576. Toluca Lake is one of the best places to live in California with an average single family home price of \$1,334,137. Living in Toluca Lake offers residents an urban feel in a somewhat suburban neighborhood. In Toluca Lake there are a lot of bars, restaurants, coffee shops, and parks. Toluca lake is surrounded by Burbank, Studio City, and North Hollywood. A large portion of the residents works in the entertainment industry.



SITE PLAN



PHOTOS



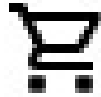
NEIGHBORING TENANTS



DEMOGRAPHICS (3-MILE RADIUS)



Population
176,902



Consumer Spending
\$2.6B



Avg Income/Household
\$111,630



Daytime Employees
120K



Walk Score
84



Median Home Value
\$868,601



Avg Household Size
2.2



Spending Food/Alcohol
\$716,842,553



Median Age
39



DAVID ASCHKENASY

EXECUTIVE VICE PRESIDENT

P 310.272.7381

E DAVIDA@CAGRE.COM

LIC. 01714442

DAVID ICKOVICS

PRINCIPAL

P 310.272.7380

E DJI@CAGRE.COM

LIC. 01315424

COMMERCIAL ASSET GROUP

1801 CENTURY PARK EAST, STE 1550

LOS ANGELES, CA 90067

P 310.275.8222 F 310.275.8223

WWW.CAGRE.COM LIC. 01876070



**COMMERCIAL
ASSET GROUP**