

1820 AGUILA AZTECA

FOR LEASE | 36,248 SF | AVAILABLE IMMEDIATELY

1820 AGUILA AZTECA, LAREDO, TX 78043



**PAD SITE
20,000 SF**

**TRAILER PARKING
FOR LEASE**

**FOR MORE PROPERTY
INFORMATION AND SITE
TOURS, PLEASE CONTACT:**

EDWARD VILLAREAL, SIOR
Managing Partner | Real Estate Broker
evillareal@stxcre.com
956.712.8022

SOUTH TEXAS COMMERCIAL
216 W Village Blvd, Ste 102
Laredo, TX 78401
stxcre.com



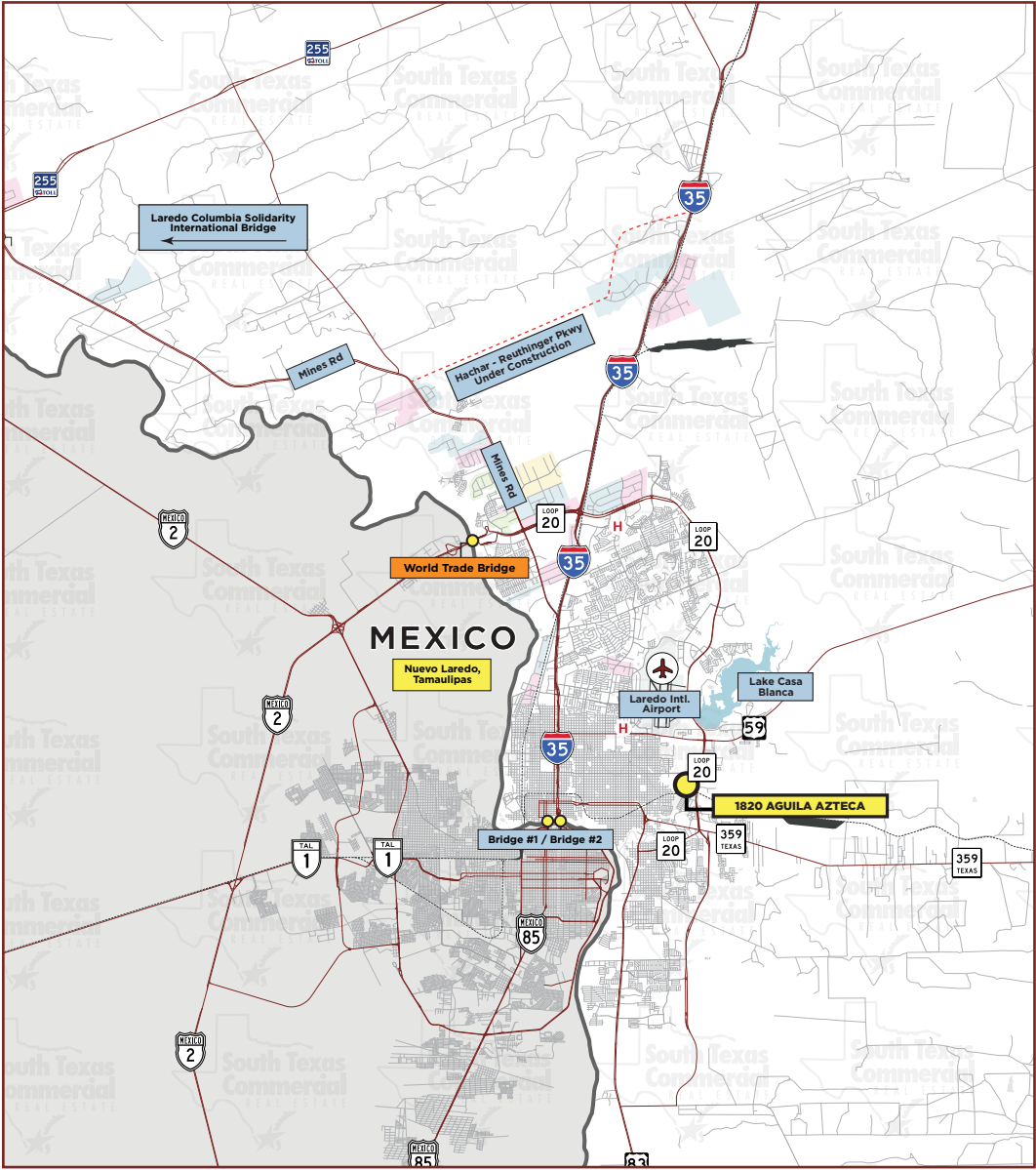


TABLE OF CONTENTS

EXISTING BUILDING PAGE 3

TRAILER PARKING PAGE 8

BUILT TO SUIT PAD PAGE 9

DEMOGRAPHICS PAGE 10

**Click on the tabs to advance a section of brochure*

OVERVIEW

1820 Aguilazteca is a 108,500 SF warehouse with 36,248 SF of space for lease. Located in the heart of south-central Laredo, Texas, inside Ponderosa Industrial Park. Strategically located near a skilled labor pool. This property provides central access to local distribution with direct access to Loop 20, connecting IH 35 with easy routes to State Highway 59 and State Highway 359. The property boasts 6 dock-high doors and an operational rail spur with 5 additional dock-high doors serviced by Canadian Pacific-Kansas City Southern. An expansion pad is also available for future growth, depending on parking configuration.

**BUILDING SPECIFICATIONS**

| | |
|---------------------|-------------------------------|
| Building Size : | ± 108,500SF |
| Available : | ± 36,248 SF |
| Office Space : | ± 2,500 SF |
| Clear Height : | 24' |
| Dock Doors : | 6 Dock High Doors |
| Grade Level Doors : | 1 Door for Grade Level Access |
| Rail Doors: | 5 Doors for Rail Access |

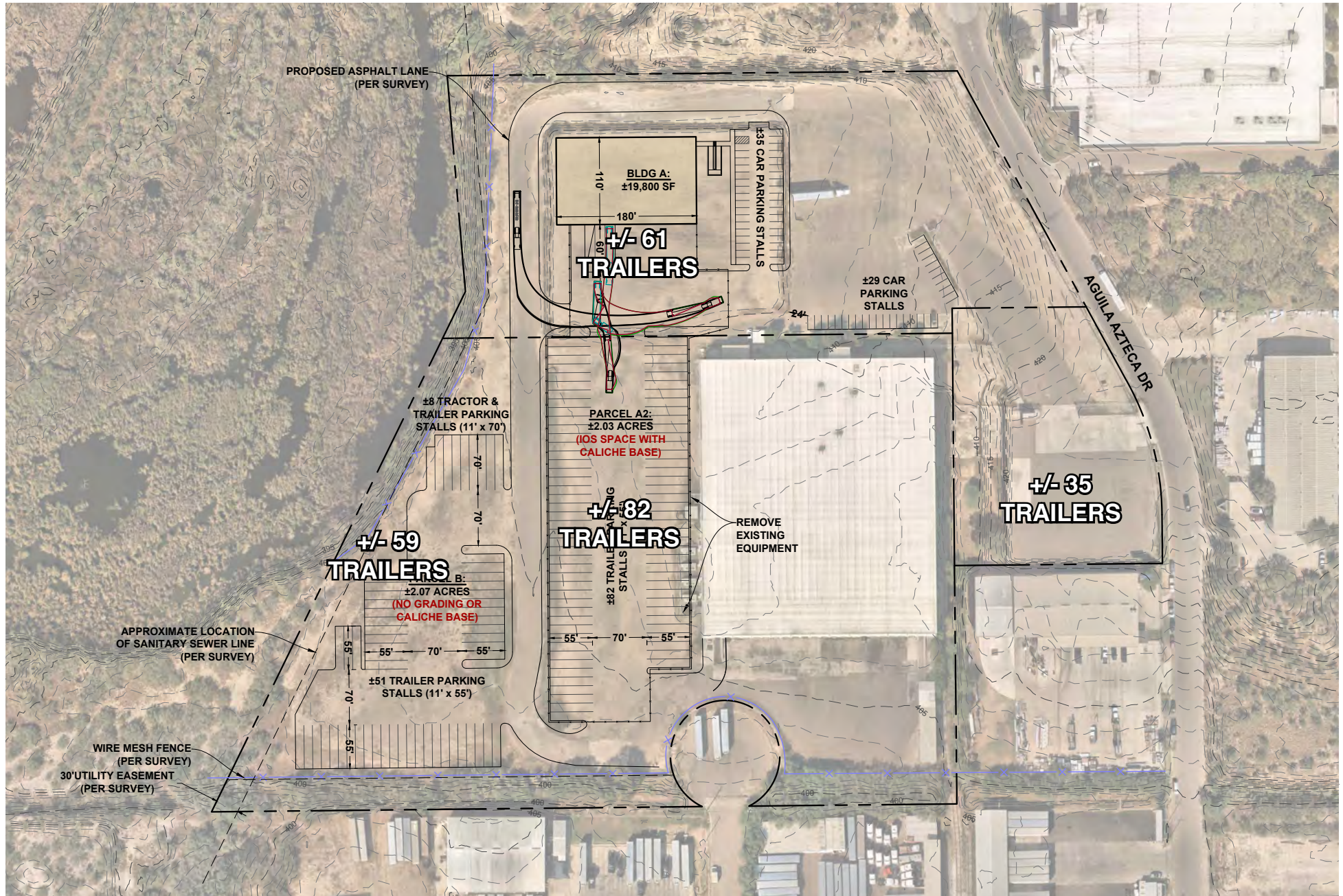
| | |
|------------------------|---------------------------|
| Trailer Parking : | ± 237 Trailer Parking |
| Year Built/Renovated : | 1999/2025 |
| Sprinklered : | Yes |
| Opportunity Zone : | Yes |
| Property Subtype: | Manufacturing |
| Industrial Park : | Ponderosa Industrial Park |
| Lot Size: | ±17.80 AC |











SPECIFICATIONS

Proposed Warehouse: ±20,000 SF / BTS



DEMOGRAPHICS

| DISTANCE | 1 MILE | 3 MILE | 5 MILE |
|------------------|----------|----------|----------|
| Total Households | 4,102 | 29,955 | 55,523 |
| Total Population | 13,129 | 97,319 | 181,472 |
| Average Income | \$67,044 | \$70,154 | \$74,194 |

WITH IN A 5 MILES RAIDUS....

 35
AVERAGE AGE

 60
RESTRAUANTS

 180
SHOPS

DRIVING TIMES

| LOCATION | DISTANCE (MILES) | DISTANCE (MINUTES) |
|-----------------------|------------------|--------------------|
| Laredo Intl. Airport | 2.7 miles | 5 minutes |
| Laredo Medical Center | 3.0 miles | 9 minutes |
| IH 35 | 4.0 miles | 9 minutes |
| Laredo Intl. Bridge | 4.5 miles | 10 minutes |
| World Trade Bridge | 10.9 miles | 18 minutes |





NEARBY TENANT AMENITIES:

- Starbucks
 - CVS
 - Subway
- And more



**FOR INFORMATION
AND SITE TOURS CONTACT:**

EDWARD VILLAREAL, SIOR

Managing Partner | Real Estate Broker

evillareal@stxcre.com

956.712.8022

SOUTH TEXAS COMMERCIAL

216 W Village Blvd, Ste 102

Laredo, TX 78401

stxcre.com

The information contained herein has been obtained from sources we believe to be reliable; however, South Texas Commercial has not verified, and will not verify, any of the information contained herein, nor has the aforementioned Broker conducted any investigation regarding these matters and makes no warranty or representation whatsoever regarding the accuracy or completeness of the information.



Information About Brokerage Services

Texas law requires all real estate license holders to give the following information about brokerage services to prospective buyers, tenants, sellers and landlords.

2-10-2025



TYPES OF REAL ESTATE LICENSE HOLDERS:

- **A BROKER** is responsible for all brokerage activities, including acts performed by sales agents sponsored by the broker.
- **A SALES AGENT** must be sponsored by a broker and works with clients on behalf of the broker.

A BROKER'S MINIMUM DUTIES REQUIRED BY LAW (A client is the person or party that the broker represents):

- Put the interests of the client above all others, including the broker's own interests;
- Inform the client of any material information about the property or transaction received by the broker;
- Answer the client's questions and present any offer to or counter-offer from the client; and
- Treat all parties to a real estate transaction honestly and fairly.

A LICENSE HOLDER CAN REPRESENT A PARTY IN A REAL ESTATE TRANSACTION:

AS AGENT FOR OWNER (SELLER/LANDLORD): The broker becomes the property owner's agent through an agreement with the owner, usually in a written listing to sell or property management agreement. An owner's agent must perform the broker's minimum duties above and must inform the owner of any material information about the property or transaction known by the agent, including information disclosed to the agent or subagent by the buyer or buyer's agent. **An owner's agent fees are not set by law and are fully negotiable.**

AS AGENT FOR BUYER/TENANT: The broker becomes the buyer/tenant's agent by agreeing to represent the buyer, usually through a written representation agreement. A buyer's agent must perform the broker's minimum duties above and must inform the buyer of any material information about the property or transaction known by the agent, including information disclosed to the agent by the seller or seller's agent. **A buyer/tenant's agent fees are not set by law and are fully negotiable.**

AS AGENT FOR BOTH - INTERMEDIARY: To act as an intermediary between the parties the broker must first obtain the written agreement of *each party* to the transaction. The written agreement must state who will pay the broker and, in conspicuous bold or underlined print, set forth the broker's obligations as an intermediary. A broker who acts as an intermediary:

- Must treat all parties to the transaction impartially and fairly;
- May, with the parties' written consent, appoint a different license holder associated with the broker to each party (owner and buyer) to communicate with, provide opinions and advice to, and carry out the instructions of each party to the transaction.
- Must not, unless specifically authorized in writing to do so by the party, disclose:
 - that the owner will accept a price less than the written asking price;
 - that the buyer/tenant will pay a price greater than the price submitted in a written offer; and
 - any confidential information or any other information that a party specifically instructs the broker in writing not to disclose, unless required to do so by law.

AS SUBAGENT: A license holder acts as a subagent when aiding a buyer in a transaction without an agreement to represent the buyer. A subagent can assist the buyer but does not represent the buyer and must place the interests of the owner first.

TO AVOID DISPUTES, ALL AGREEMENTS BETWEEN YOU AND A BROKER SHOULD BE IN WRITING AND CLEARLY ESTABLISH:

- The broker's duties and responsibilities to you, and your obligations under the representation agreement.
- Who will pay the broker for services provided to you, when payment will be made and how the payment will be calculated.

LICENSE HOLDER CONTACT INFORMATION: This notice is being provided for information purposes. It does not create an obligation for you to use the broker's services. Please acknowledge receipt of this notice below and retain a copy for your records.

| | | | |
|-----------------------------------------------------------------------|-------------|-----------------------|--------------|
| South Texas Commercial Real Estate | 9003917 | evillareal@stxcre.com | 956-682-4242 |
| Licensed Broker /Broker Firm Name or Primary Assumed Business Name | License No. | Email | Phone |
| Edward J. Villareal | 467182 | evillareal@stxcre.com | 956-682-4242 |
| Designated Broker of Firm | License No. | Email | Phone |
| Licensed Supervisor of Sales Agent/ Associate | License No. | Email | Phone |
| Sales Agent/Associate's Name | License No. | Email | Phone |

Buyer/Tenant/Seller/Landlord Initials

Date